

# Southern Chinook Conservation Units

## CU: East Vancouver Island-Cowichan & Koksilah

Version 6.0, May 2013

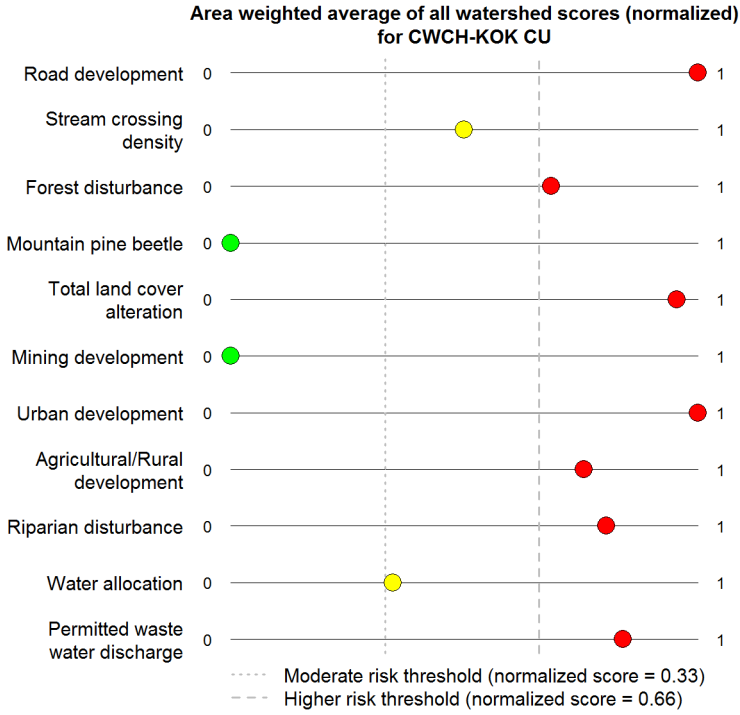


Fisheries and Oceans Canada

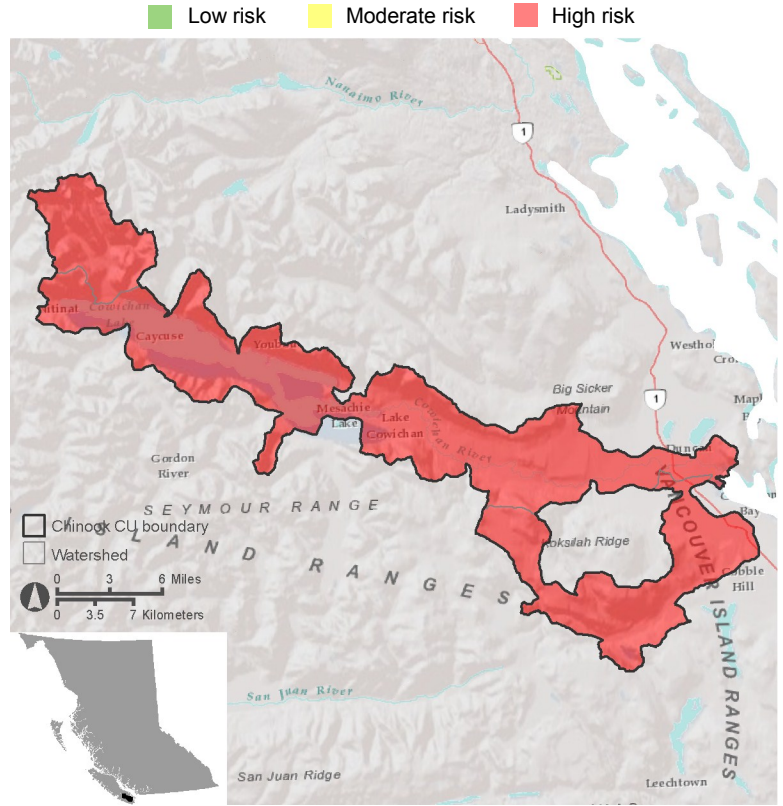
Pêches et Océans Canada



### CU Overview



### Cumulative Watershed Risk Score (roll up of 5 selected indicators)

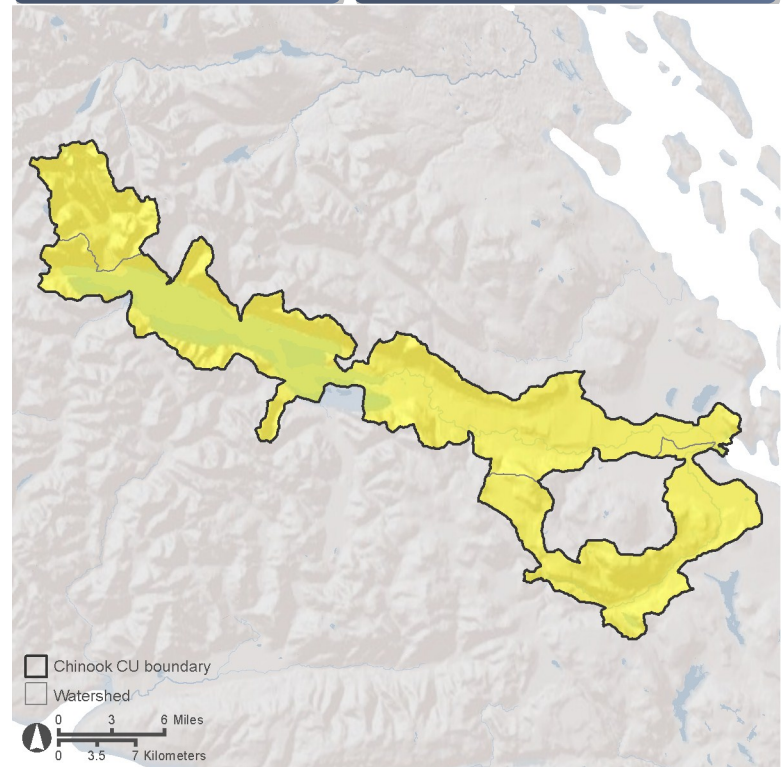
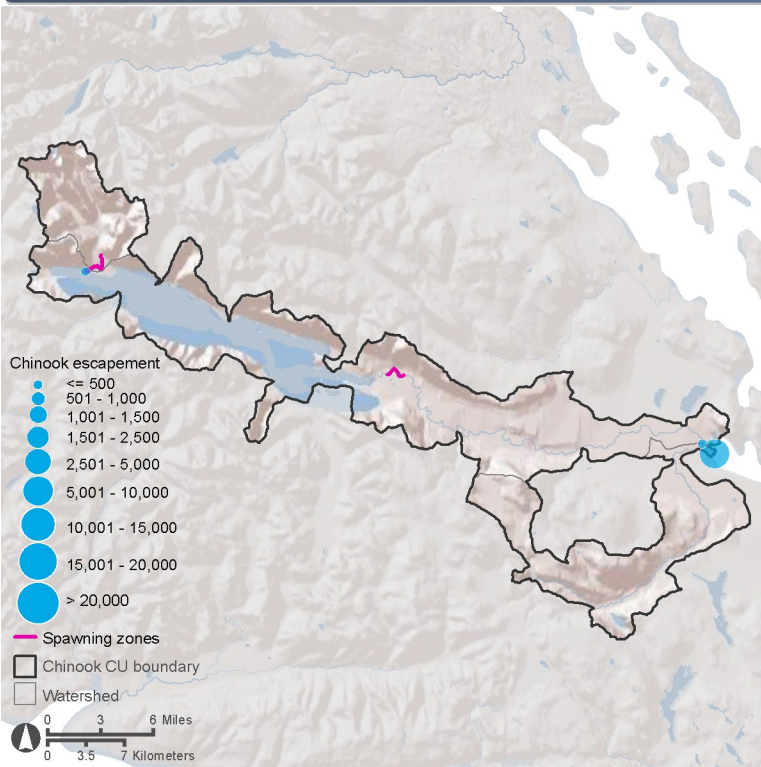


### Habitat Quantity

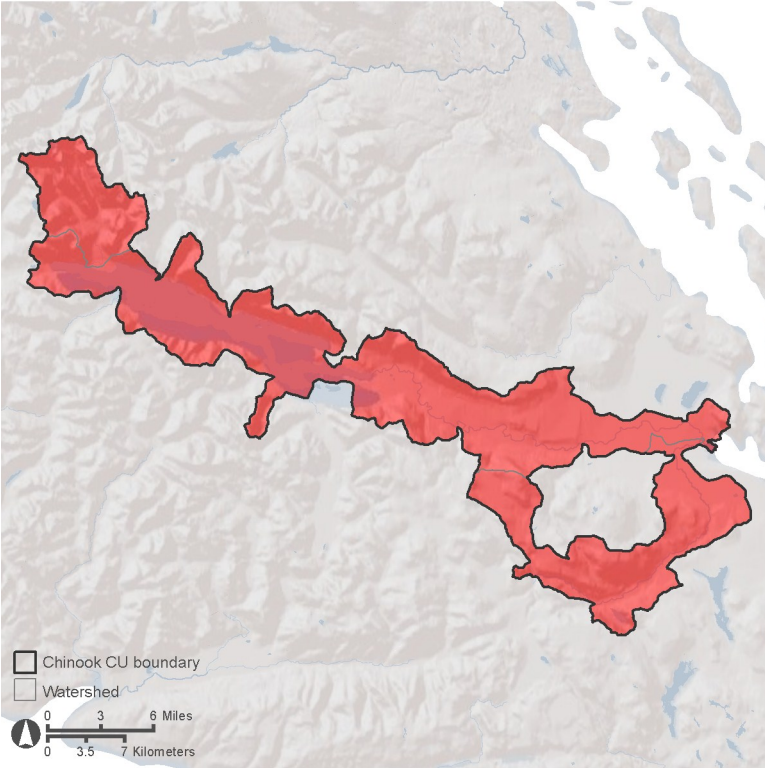
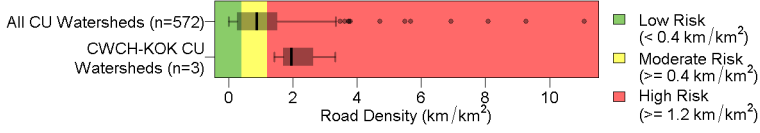
CU spawning length	6 km	(0.2% of total for all CUs)
CU accessible stream length	766 km	
Estuary area	393 ha	(13.8% under threat)

### Vulnerability

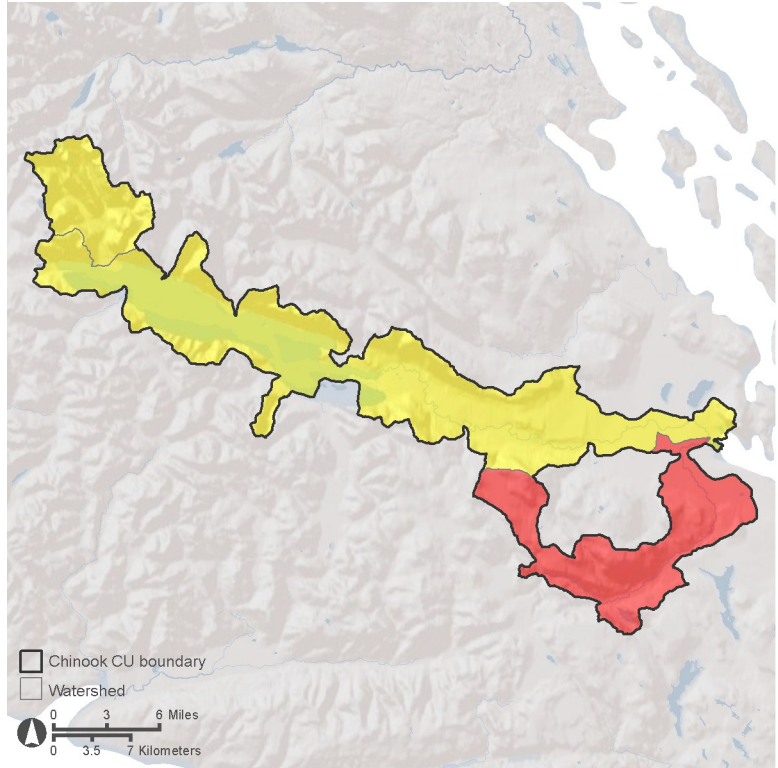
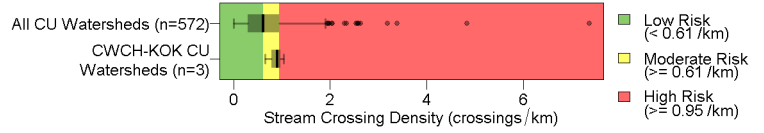
Life history type	Ocean	Flow sensitivity	Summer & winter (high risk)
Large lake influence?	Yes	Summer / Winter (moderate risk)	No sensitivity (low risk)



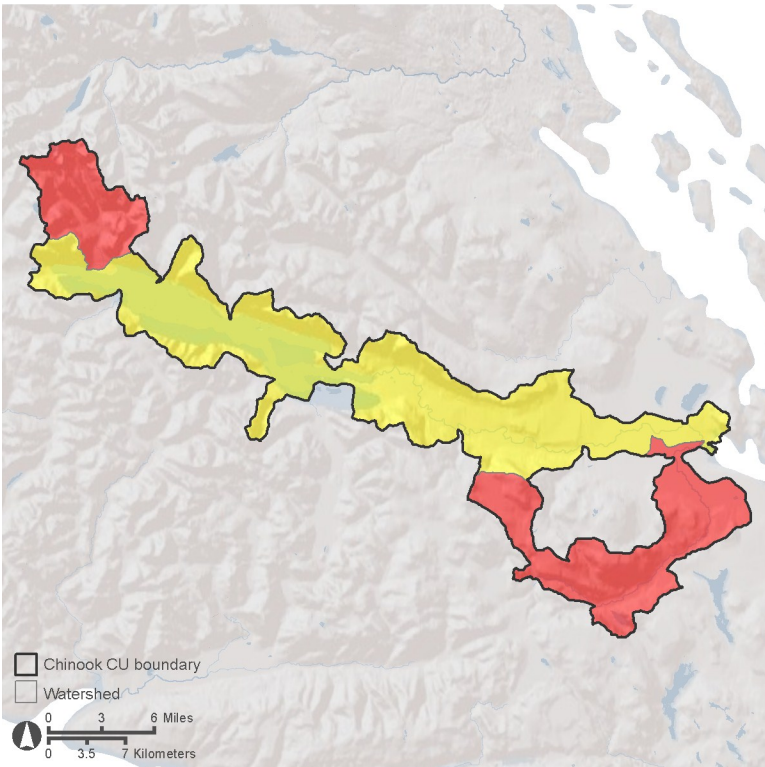
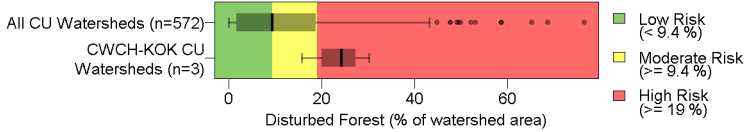
**Pressure Road Development**



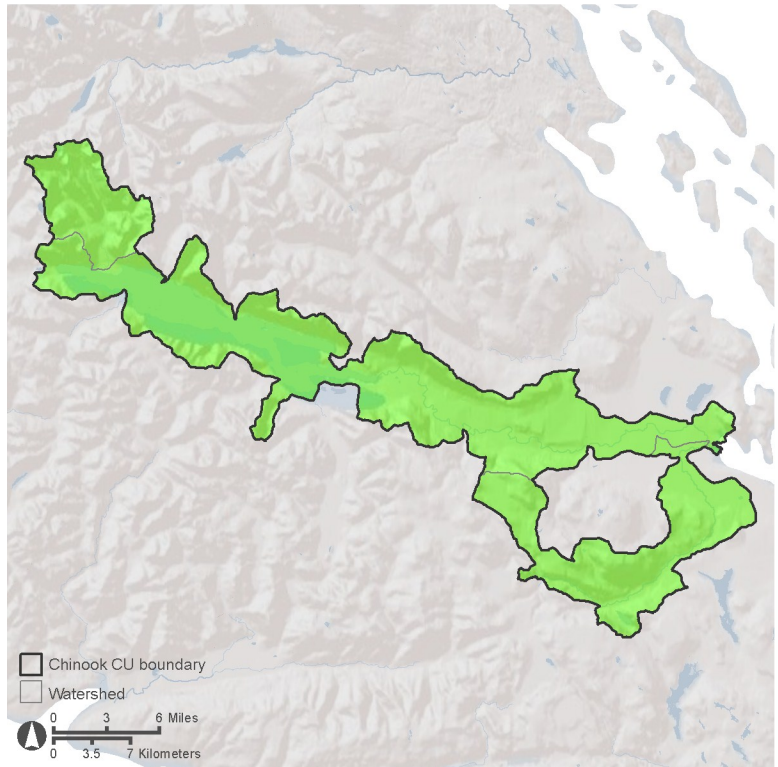
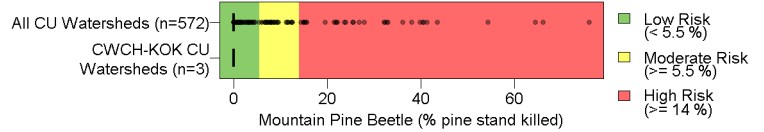
**Pressure Stream Crossing Density**



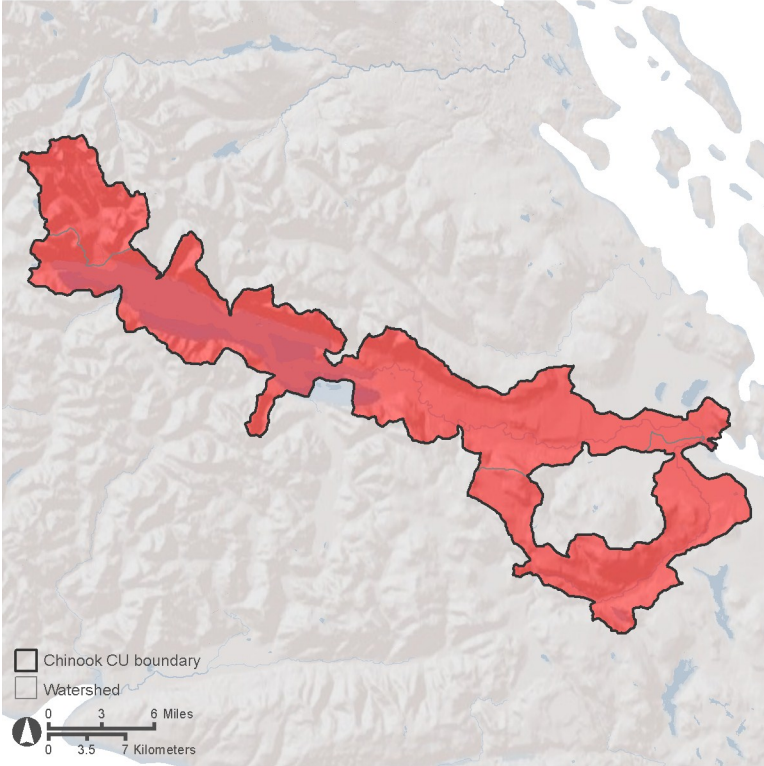
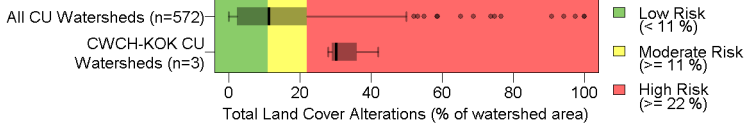
**Pressure Forest Disturbance**



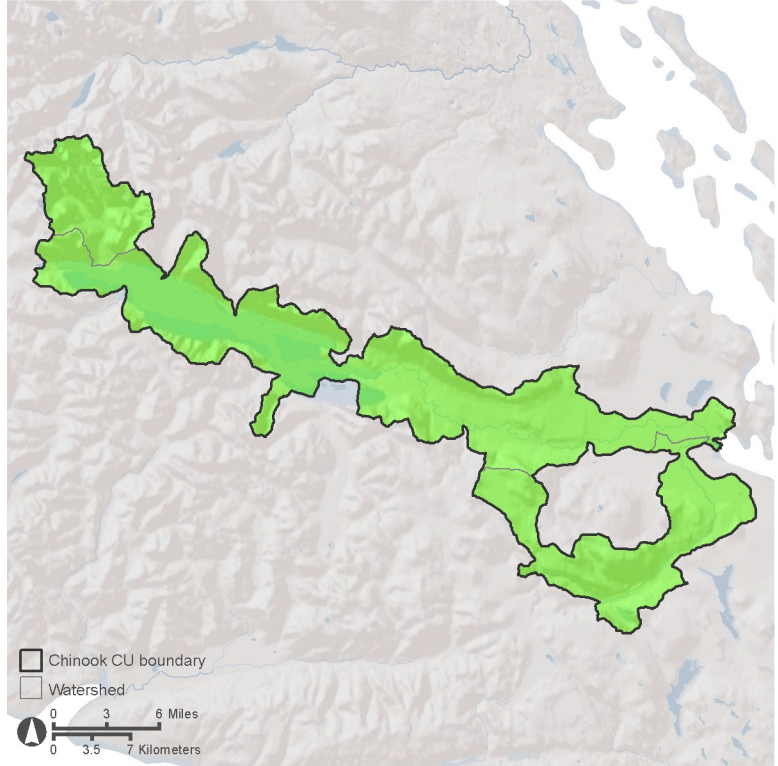
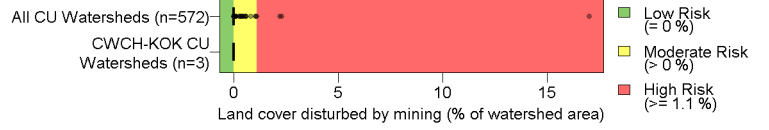
**Pressure Mountain Pine Beetle**



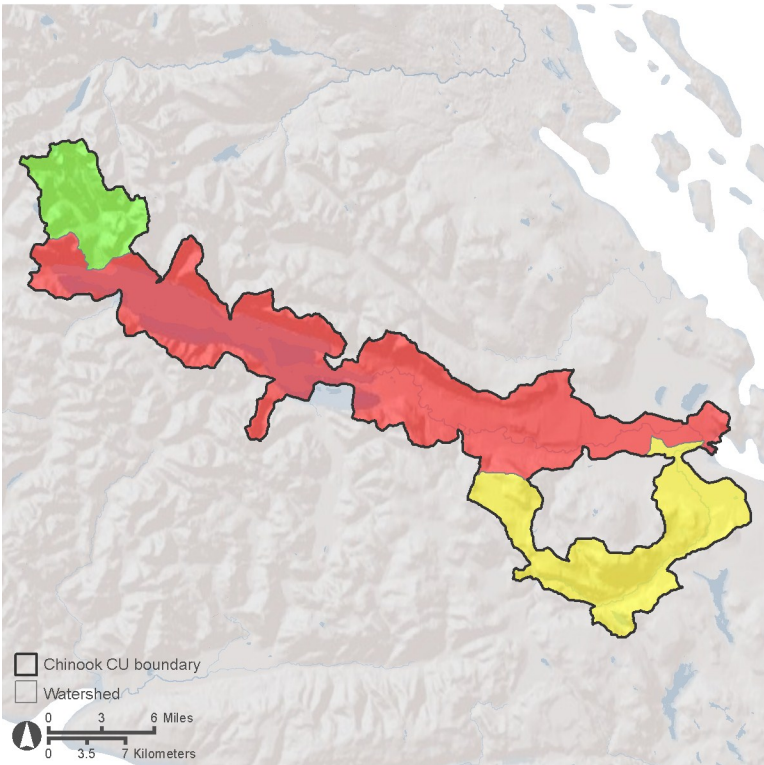
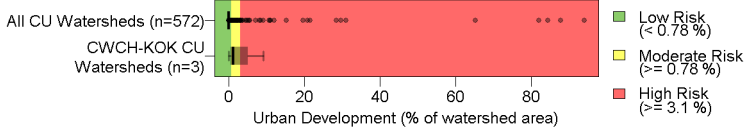
**Pressure Total Land Cover Alteration**



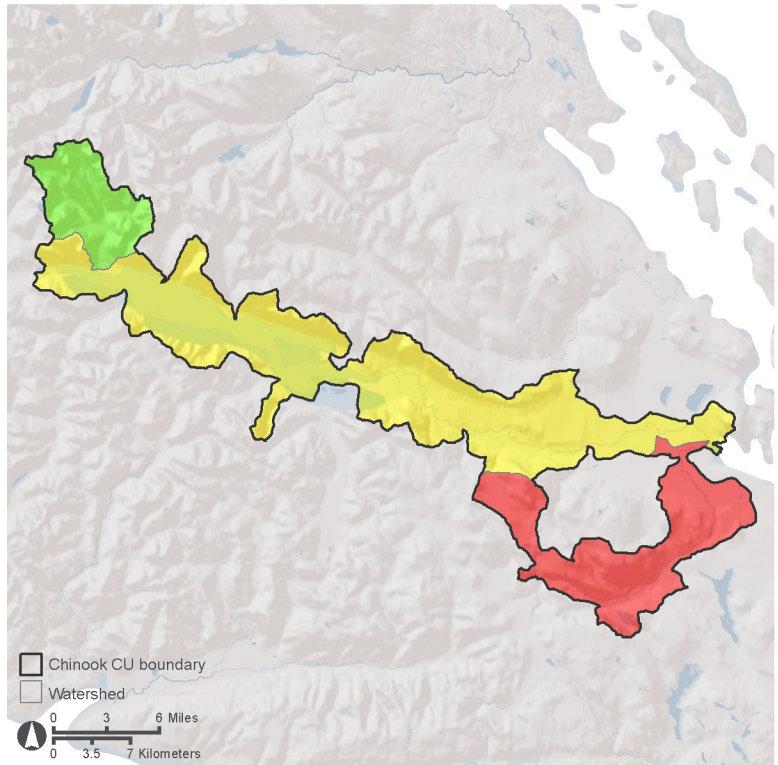
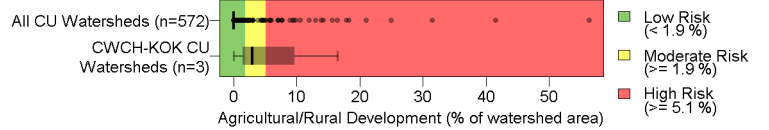
**Pressure Mining Development**



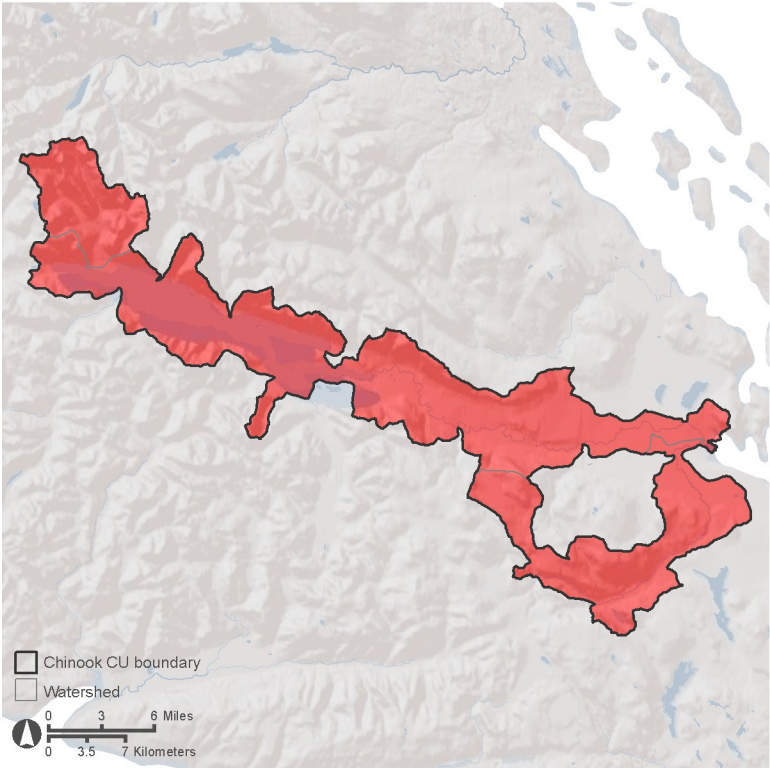
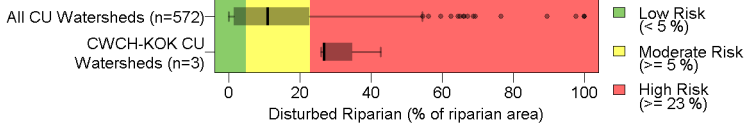
**Pressure Urban Development**



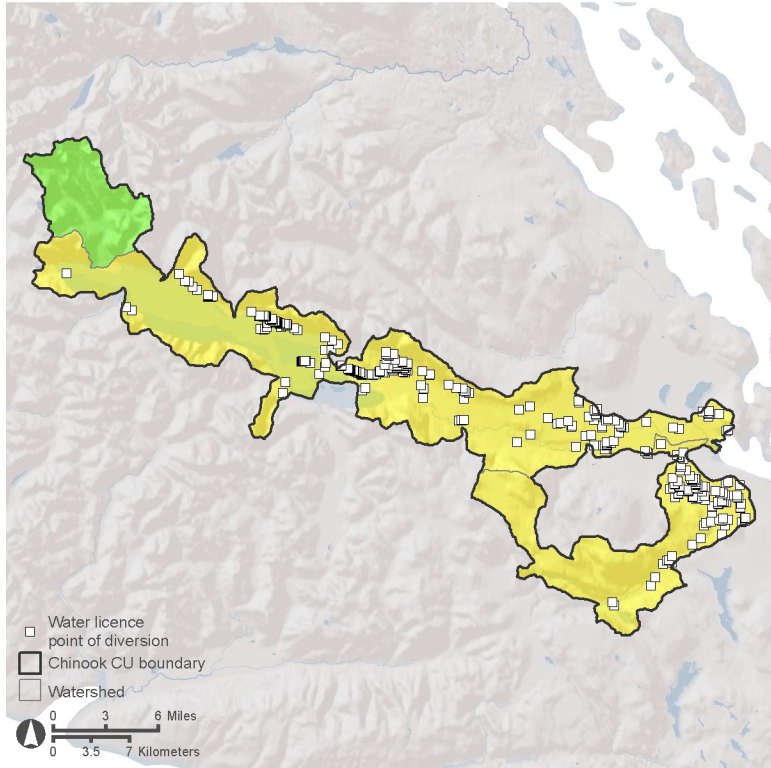
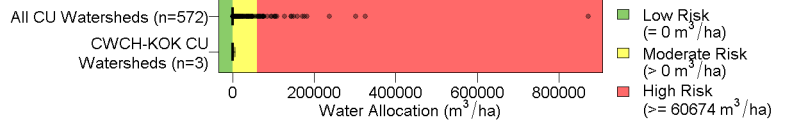
**Pressure Agricultural / Rural Development**



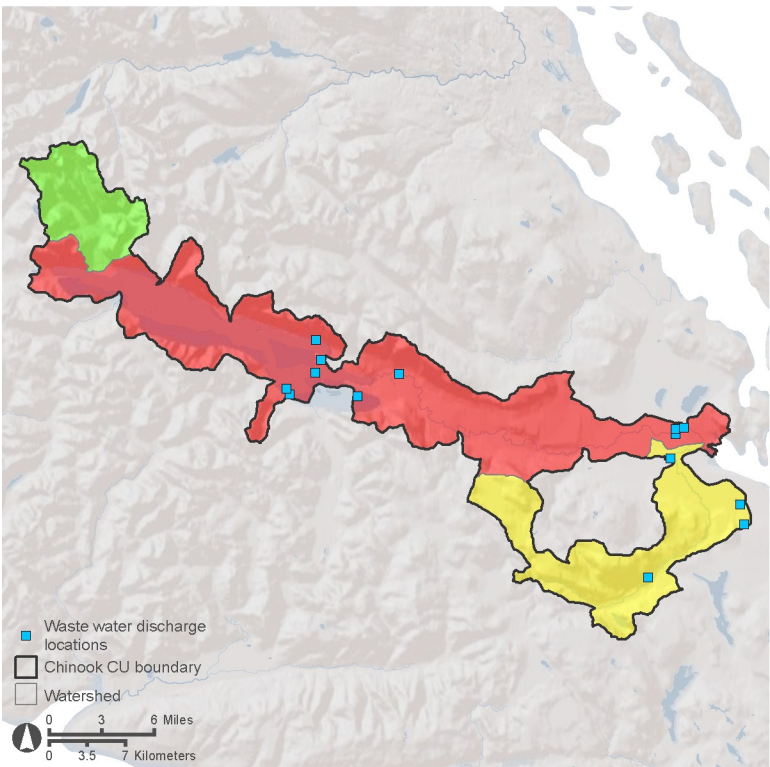
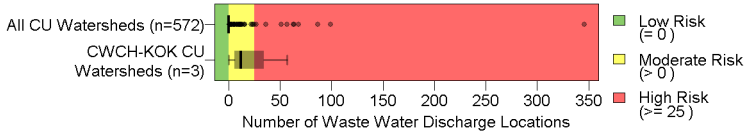
**Pressure Riparian Disturbance**



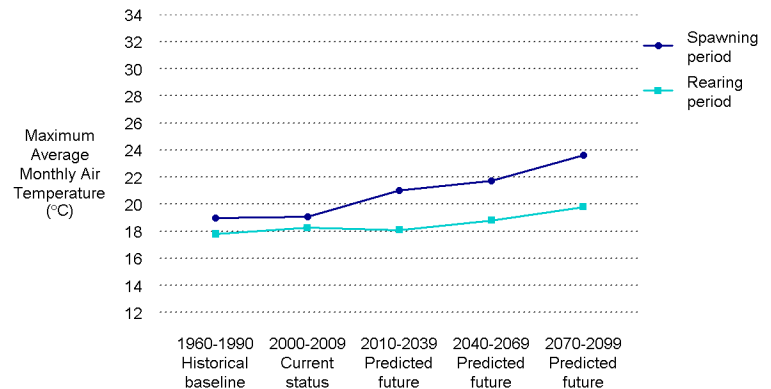
**Pressure Water Allocation**



**Pressure Permitted Waste Water Discharges**



**Climate Air Temperature (ClimateBC)**



% change in air temperature over historical baseline

	Current	2010-2039	2040-2069	2070-2099
Spawning period	0%	11%	14%	24%
Rearing period	3%	2%	6%	11%