

Numbers of Interviews conducted contributing to the area by day and access site

		Cattle Point	Flemming	Pedder Bay
		Mid Day	Mid Day	Mid Day
29 January, 2014	Midweek			
30 January, 2014	Midweek			
31 January, 2014	Midweek			
01 February, 2014	Weekend			2
02 February, 2014	Weekend		23	
03 February, 2014	Midweek	1		
04 February, 2014	Midweek			
05 February, 2014	Midweek			
06 February, 2014	Midweek			
07 February, 2014	Midweek			
08 February, 2014	Weekend	4		
09 February, 2014	Weekend		8	1
10 February, 2014	Midweek			
11 February, 2014	Midweek		3	2
12 February, 2014	Midweek			
13 February, 2014	Midweek			
14 February, 2014	Midweek			
15 February, 2014	Weekend			
16 February, 2014	Weekend			1
17 February, 2014	Midweek		2	
18 February, 2014	Midweek			
19 February, 2014	Midweek			
20 February, 2014	Midweek			
21 February, 2014	Midweek			
22 February, 2014	Weekend			4
23 February, 2014	Weekend		4	
24 February, 2014	Midweek			
25 February, 2014	Midweek		1	
26 February, 2014	Midweek			
27 February, 2014	Midweek			
28 February, 2014	Midweek			1
01 March, 2014	Weekend			
02 March, 2014	Weekend		5	1
03 March, 2014	Midweek	2		1

Daily tally of interviews, catch and effort

Date	Day	Day Type	Area	Average Fishing Conditions	Interviews & Log Trips	Chinook	Coho	Sockeye	Halibut	Observed Fishing	Flight Time	Expanded Fishing
29 January, 2014	Wednesday	Midweek	Area 19 (JDF)		0							
30 January, 2014	Thursday	Midweek	Area 19 (JDF)		0							
31 January, 2014	Friday	Midweek	Area 19 (JDF)		0							
01 February, 2014	Saturday	Weekend	Area 19 (JDF)	calm/rippled	2	7						
02 February, 2014	Sunday	Weekend	Area 19 (JDF)	calm/rippled	23	28						
03 February, 2014	Monday	Midweek	Area 19 (JDF)	choppy	1							
04 February, 2014	Tuesday	Midweek	Area 19 (JDF)		0					1	1105	1
05 February, 2014	Wednesday	Midweek	Area 19 (JDF)		0							
06 February, 2014	Thursday	Midweek	Area 19 (JDF)		0							
07 February, 2014	Friday	Midweek	Area 19 (JDF)		0							
08 February, 2014	Saturday	Weekend	Area 19 (JDF)	frequent whitecaps	4	1			2			
09 February, 2014	Sunday	Weekend	Area 19 (JDF)	choppy	9	2				15	1057	20
10 February, 2014	Monday	Midweek	Area 19 (JDF)		0							
11 February, 2014	Tuesday	Midweek	Area 19 (JDF)	choppy	5				2			
12 February, 2014	Wednesday	Midweek	Area 19 (JDF)		0							
13 February, 2014	Thursday	Midweek	Area 19 (JDF)		0							
14 February, 2014	Friday	Midweek	Area 19 (JDF)		0							
15 February, 2014	Saturday	Weekend	Area 19 (JDF)		0					0	0950	0
16 February, 2014	Sunday	Weekend	Area 19 (JDF)	choppy	1							
17 February, 2014	Monday	Midweek	Area 19 (JDF)	frequent whitecaps	2				2			
18 February, 2014	Tuesday	Midweek	Area 19 (JDF)		0							
19 February, 2014	Wednesday	Midweek	Area 19 (JDF)		0							
20 February, 2014	Thursday	Midweek	Area 19 (JDF)		0							
21 February, 2014	Friday	Midweek	Area 19 (JDF)		0					8	1049	10
22 February, 2014	Saturday	Weekend	Area 19 (JDF)	choppy	4	1			5			
23 February, 2014	Sunday	Weekend	Area 19 (JDF)	frequent whitecaps	4	2						
24 February, 2014	Monday	Midweek	Area 19 (JDF)		0							
25 February, 2014	Tuesday	Midweek	Area 19 (JDF)	frequent whitecaps	1					0	1105	0
26 February, 2014	Wednesday	Midweek	Area 19 (JDF)		0							
27 February, 2014	Thursday	Midweek	Area 19 (JDF)		0							
28 February, 2014	Friday	Midweek	Area 19 (JDF)	choppy	1				1			
01 March, 2014	Saturday	Weekend	Area 19 (JDF)		0							
02 March, 2014	Sunday	Weekend	Area 19 (JDF)	calm/rippled	6	3			2			
03 March, 2014	Monday	Midweek	Area 19 (JDF)	choppy	3				2			
	Totals	Midweek	Area 19 (JDF)	choppy	10				5	3*		4*
	Totals	Weekend	Area 19 (JDF)	choppy	47	41			7	8*		10*

* Average number of boats observed and Expanded

Simple area based cpue (catch per boat trip) expansion

				CPUE				Retained			
Day Type	Average Expanded Boats	Number of Days	Total estimated Effort	Chinook	Coho	Sockeye	Halibut	Chinook	Coho	Sockeye	Halibut
Midweek	4	20	80				0.5				40
Weekend	10	8	80	0.8723			0.1489	70			12

Recent years estimates of retained catch and effort

Year	Area	Month	Total Effort	Chinook Kept	Coho Kept	Sockeye Kept	Halibut Kept
2009	Area 19 (JDF)	February	330	144			
2011	Area 19 (JDF)	February	476	191			
2012	Area 19 (JDF)	February	280	236			
2014	Area 19 (JDF)	February	154	87			51
5-Yr Avg	Area 19 (JDF)	February	362	190			

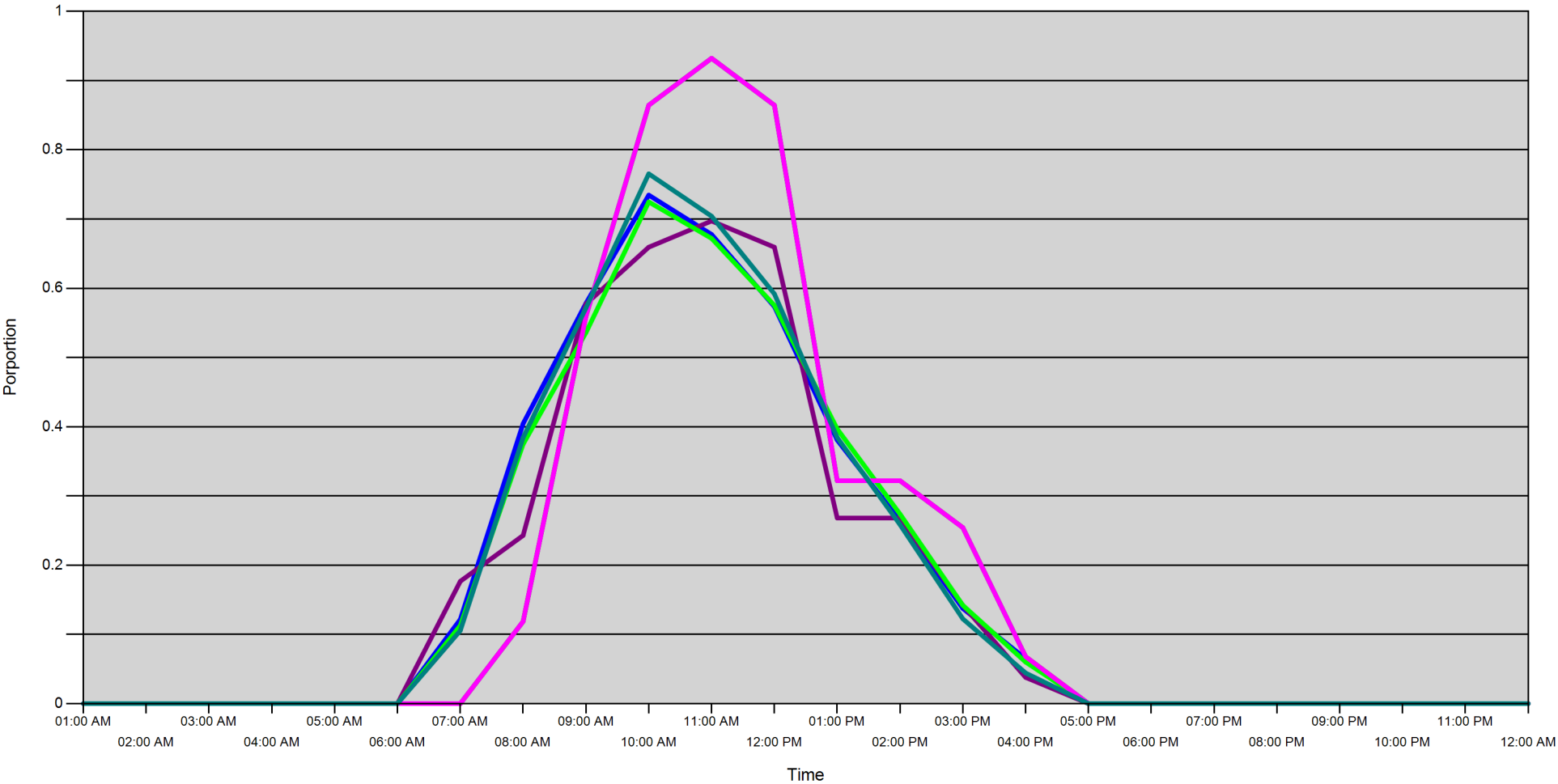
Sport Head Recovery Review

Year	Area	Month	Species	Creel Marked Catch	Creel Mark Rate	Creel Submission Rate	iRec Marked Catch	iRec Mark Rate	iRec Submission Rate	Sport Head recoveries
2014	Area 19 (JDF)	2	Chinook	68	78 %	66 %			1 %	45

Guided Proprtions Review

Data Source	Year	Month	Area	Interviews	Guided Proportion
Creel	2014	02	Area 19 (JDF)	57	5 %

Proportion of each day's fishing by hour



Area		01:00 AM	02:00 AM	03:00 AM	04:00 AM	05:00 AM	06:00 AM	07:00 AM	08:00 AM	09:00 AM	10:00 AM	11:00 AM	12:00 PM	01:00 PM	02:00 PM	03:00 PM	04:00 PM	05:00 PM	06:00 PM	07:00 PM	08:00 PM	09:00 PM	10:00 PM	11:00 PM	12:00 AM
19D	Midweek	0	0	0	0	0	0	0	0.119	0.559	0.864	0.932	0.864	0.322	0.322	0.254	0.068	0	0	0	0	0	0	0	0
	Weekend	0	0	0	0	0	0	0.122	0.404	0.578	0.735	0.678	0.573	0.381	0.264	0.137	0.065	0	0	0	0	0	0	0	0
19C	Midweek	0	0	0	0	0	0	0.177	0.243	0.577	0.659	0.697	0.659	0.268	0.268	0.142	0.038	0	0	0	0	0	0	0	0
	Weekend	0	0	0	0	0	0	0.113	0.375	0.536	0.725	0.672	0.575	0.397	0.274	0.142	0.06	0	0	0	0	0	0	0	0
19E	Midweek	0	0	0	0	0	0	0	0.119	0.559	0.864	0.932	0.864	0.322	0.322	0.254	0.068	0	0	0	0	0	0	0	0
	Weekend	0	0	0	0	0	0	0.105	0.384	0.571	0.765	0.704	0.592	0.384	0.259	0.122	0.044	0	0	0	0	0	0	0	0

Daily Fishing Conditions

		Cattle Point	Flemming	Pedder Bay
29 January, 2014	Midweek			
30 January, 2014	Midweek			
31 January, 2014	Midweek			
01 February, 2014	Weekend			calm/rippled
02 February, 2014	Weekend		calm/rippled	
03 February, 2014	Midweek	choppy		
04 February, 2014	Midweek			
05 February, 2014	Midweek			
06 February, 2014	Midweek			
07 February, 2014	Midweek			
08 February, 2014	Weekend	frequent whitecaps		
09 February, 2014	Weekend		choppy	frequent whitecaps
10 February, 2014	Midweek			
11 February, 2014	Midweek		choppy	choppy
12 February, 2014	Midweek			
13 February, 2014	Midweek			
14 February, 2014	Midweek			
15 February, 2014	Weekend			
16 February, 2014	Weekend			choppy
17 February, 2014	Midweek		frequent whitecaps	
18 February, 2014	Midweek			
19 February, 2014	Midweek			
20 February, 2014	Midweek			
21 February, 2014	Midweek			
22 February, 2014	Weekend			choppy
23 February, 2014	Weekend		frequent whitecaps	
24 February, 2014	Midweek			
25 February, 2014	Midweek		frequent whitecaps	
26 February, 2014	Midweek			
27 February, 2014	Midweek			
28 February, 2014	Midweek			choppy
01 March, 2014	Weekend			
02 March, 2014	Weekend		calm/rippled	choppy
03 March, 2014	Midweek	choppy		choppy