

Numbers of Interviews conducted contributing to the area by day and access site

		Pacific Gateway Marina		Port Renfrew Govt D	Port Renfrew Marina	
		Mid Day	Morning	Mid Day	Evening	Mid Day
29 May, 2014	Midweek					
30 May, 2014	Midweek					
31 May, 2014	Weekend					
01 June, 2014	Weekend	4				
02 June, 2014	Midweek					
03 June, 2014	Midweek					
04 June, 2014	Midweek				1	
05 June, 2014	Midweek					
06 June, 2014	Midweek	2				
07 June, 2014	Weekend					
08 June, 2014	Weekend					5
09 June, 2014	Midweek	2				
10 June, 2014	Midweek					
11 June, 2014	Midweek					
12 June, 2014	Midweek					
13 June, 2014	Midweek			2		
14 June, 2014	Weekend					2
15 June, 2014	Weekend					1
16 June, 2014	Midweek					
17 June, 2014	Midweek					
18 June, 2014	Midweek					
19 June, 2014	Midweek	7				
20 June, 2014	Midweek					
21 June, 2014	Weekend	13				
22 June, 2014	Weekend					5
23 June, 2014	Midweek					
24 June, 2014	Midweek					
25 June, 2014	Midweek	11				
26 June, 2014	Midweek					
27 June, 2014	Midweek		1			
28 June, 2014	Weekend					5
29 June, 2014	Weekend	8				
30 June, 2014	Midweek			5		
01 July, 2014	Weekend					
02 July, 2014	Midweek					
03 July, 2014	Midweek				2	

Daily tally of interviews, catch and effort

Date	Day	Day Type	Area	Average Fishing Conditions	Interviews & Log Trips	Chinook	Coho	Sockeye	Halibut	Observed Fishing	Flight Time	Expanded Fishing
29 May, 2014	Thursday	Midweek	Area 121		0							
30 May, 2014	Friday	Midweek	Area 121		0							
31 May, 2014	Saturday	Weekend	Area 121		0							
01 June, 2014	Sunday	Weekend	Area 121	calm/rippled	4	2			14			
02 June, 2014	Monday	Midweek	Area 121		0							
03 June, 2014	Tuesday	Midweek	Area 121		0							
04 June, 2014	Wednesday	Midweek	Area 121	choppy	1				2			
05 June, 2014	Thursday	Midweek	Area 121		0					4	0815	6
06 June, 2014	Friday	Midweek	Area 121	choppy	2				10			
07 June, 2014	Saturday	Weekend	Area 121		0							
08 June, 2014	Sunday	Weekend	Area 121	choppy	5				6			
09 June, 2014	Monday	Midweek	Area 121	choppy	2	5			2	5	0823	7
10 June, 2014	Tuesday	Midweek	Area 121		0							
11 June, 2014	Wednesday	Midweek	Area 121		0							
12 June, 2014	Thursday	Midweek	Area 121		0							
13 June, 2014	Friday	Midweek	Area 121	large swells	2	17			4			
14 June, 2014	Saturday	Weekend	Area 121	choppy	2	3	1		8	9	0820	12
15 June, 2014	Sunday	Weekend	Area 121	choppy	1							
16 June, 2014	Monday	Midweek	Area 121		0							
17 June, 2014	Tuesday	Midweek	Area 121		0							
18 June, 2014	Wednesday	Midweek	Area 121		0					11	0817	15
19 June, 2014	Thursday	Midweek	Area 121	calm/rippled	7	5			20			
20 June, 2014	Friday	Midweek	Area 121		0							
21 June, 2014	Saturday	Weekend	Area 121	calm/rippled	13	89	8		50	43	0821	59
22 June, 2014	Sunday	Weekend	Area 121	calm/rippled	5	22	4		4			
23 June, 2014	Monday	Midweek	Area 121		0							
24 June, 2014	Tuesday	Midweek	Area 121		0							
25 June, 2014	Wednesday	Midweek	Area 121	choppy	11	48	1		35			
26 June, 2014	Thursday	Midweek	Area 121		0							
27 June, 2014	Friday	Midweek	Area 121	frequent whitecaps	1				2	3	0923	3
28 June, 2014	Saturday	Weekend	Area 121	choppy	5	8			3	26	0939	32
29 June, 2014	Sunday	Weekend	Area 121	large swells	8	15	9		28			
30 June, 2014	Monday	Midweek	Area 121	calm/rippled	5	37	6		21	23	0818	31
01 July, 2014	Tuesday (Canada Day)	Weekend	Area 121		0							
02 July, 2014	Wednesday	Midweek	Area 121		0							
03 July, 2014	Thursday	Midweek	Area 121	calm/rippled	2				2			
	Totals	Midweek	Area 121	choppy	31	112	7		96	9*		12*
	Totals	Weekend	Area 121	choppy	43	139	22		113	26*		34*

* Average number of boats observed and Expanded

Simple area based cpue (catch per boat trip) expansion

				CPUE				Retained			
Day Type	Average Expanded Boats	Number of Days	Total estimated Effort	Chinook	Coho	Sockeye	Halibut	Chinook	Coho	Sockeye	Halibut
Weekend	34	9	306	3.2326	0.5116		2.6279	989	157		804
Midweek	12	21	252	3.6129	0.2258		3.0968	910	57		780

Recent years estimates of retained catch and effort

Year	Area	Month	Total Effort	Chinook Kept	Coho Kept	Sockeye Kept	Halibut Kept
2009	Area 121	June	230	742	593	5	636
2010	Area 121	June	49	118	25		125
2011	Area 121	June	164	875	179		409
2012	Area 121	June	286	1157	830		720
2013	Area 121	June	362	1785	476		849
2014	Area 121	June	472	1529	164		1294
5-Yr Avg	Area 121	June	218	935	421	5	548

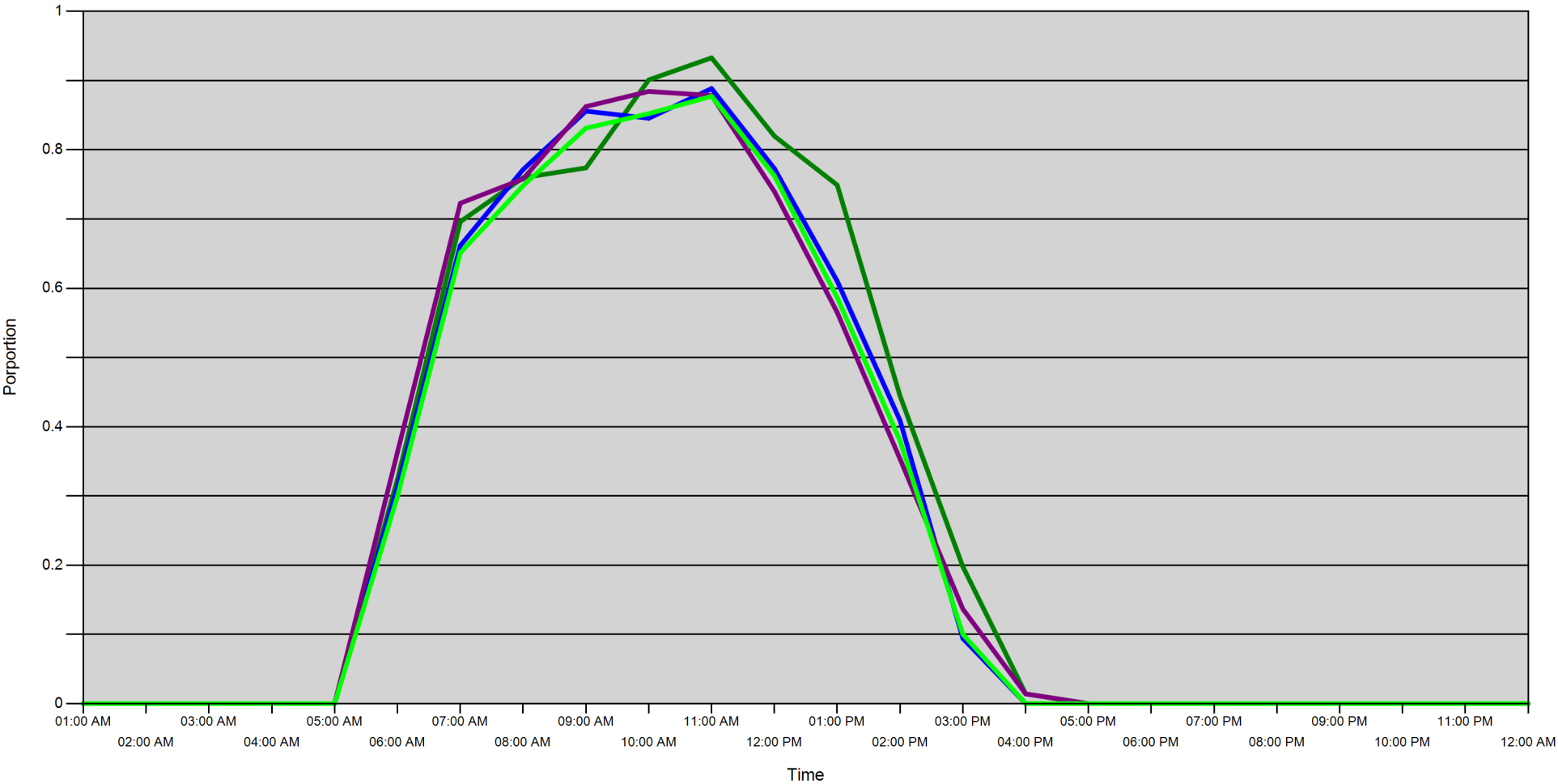
Sport Head Recovery Review

Year	Area	Month	Species	Creel Marked Catch	Creel Mark Rate	Creel Submission Rate	iRec Marked Catch	iRec Mark Rate	iRec Submission Rate	Sport Head recoveries
2014	Area 121	6	Coho	90	55 %	11 %	96	49 %	10 %	10
2014	Area 121	6	Chinook	867	57 %	7 %	725	60 %	8 %	61

Guided Proprtions Review

Data Source	Year	Month	Area	Interviews	Guided Proportion
Creel	2014	06	Area 121	74	62 %

Proportion of each day's fishing by hour



Area		01:00 AM	02:00 AM	03:00 AM	04:00 AM	05:00 AM	06:00 AM	07:00 AM	08:00 AM	09:00 AM	10:00 AM	11:00 AM	12:00 PM	01:00 PM	02:00 PM	03:00 PM	04:00 PM	05:00 PM	06:00 PM	07:00 PM	08:00 PM	09:00 PM	10:00 PM	11:00 PM	12:00 AM
121B	Midweek	0	0	0	0	0	0.324	0.696	0.76	0.774	0.901	0.933	0.82	0.749	0.445	0.198	0.014	0	0	0	0	0	0	0	0
	Weekend	0	0	0	0	0	0.313	0.662	0.771	0.856	0.846	0.888	0.773	0.61	0.409	0.094	0	0	0	0	0	0	0	0	0
121A	Midweek	0	0	0	0	0	0.363	0.723	0.758	0.862	0.884	0.879	0.74	0.565	0.353	0.137	0.014	0	0	0	0	0	0	0	0
	Weekend	0	0	0	0	0	0.299	0.651	0.748	0.831	0.852	0.877	0.763	0.587	0.38	0.1	0	0	0	0	0	0	0	0	0

Daily Fishing Conditions

		Pacific Gateway Marina	Port Renfrew Govt D	Port Renfrew Marina
29 May, 2014	Midweek			
30 May, 2014	Midweek			
31 May, 2014	Weekend			
01 June, 2014	Weekend	calm/rippled		
02 June, 2014	Midweek			
03 June, 2014	Midweek			
04 June, 2014	Midweek			choppy
05 June, 2014	Midweek			
06 June, 2014	Midweek	choppy		
07 June, 2014	Weekend			
08 June, 2014	Weekend			choppy
09 June, 2014	Midweek	choppy		
10 June, 2014	Midweek			
11 June, 2014	Midweek			
12 June, 2014	Midweek			
13 June, 2014	Midweek		large swells	
14 June, 2014	Weekend			choppy
15 June, 2014	Weekend			choppy
16 June, 2014	Midweek			
17 June, 2014	Midweek			
18 June, 2014	Midweek			
19 June, 2014	Midweek	calm/rippled		
20 June, 2014	Midweek			
21 June, 2014	Weekend	calm/rippled		
22 June, 2014	Weekend			calm/rippled
23 June, 2014	Midweek			
24 June, 2014	Midweek			
25 June, 2014	Midweek	choppy		
26 June, 2014	Midweek			
27 June, 2014	Midweek	frequent whitecaps		
28 June, 2014	Weekend			choppy
29 June, 2014	Weekend	large swells		
30 June, 2014	Midweek		calm/rippled	
01 July, 2014	Weekend			
02 July, 2014	Midweek			
03 July, 2014	Midweek			calm/rippled