

Numbers of Interviews conducted contributing to the area by day and access site

		Cattle Point		Sidney	
		Evening	Morning	Evening	Morning
29 May, 2014	Midweek				
30 May, 2014	Midweek				
31 May, 2014	Weekend				
01 June, 2014	Weekend				
02 June, 2014	Midweek				
03 June, 2014	Midweek				
04 June, 2014	Midweek				
05 June, 2014	Midweek				
06 June, 2014	Midweek				
07 June, 2014	Weekend		4		
08 June, 2014	Weekend				17
09 June, 2014	Midweek				
10 June, 2014	Midweek				
11 June, 2014	Midweek				
12 June, 2014	Midweek				
13 June, 2014	Midweek				
14 June, 2014	Weekend			6	
15 June, 2014	Weekend				
16 June, 2014	Midweek				
17 June, 2014	Midweek				
18 June, 2014	Midweek				
19 June, 2014	Midweek				
20 June, 2014	Midweek				
21 June, 2014	Weekend			14	
22 June, 2014	Weekend	1			
23 June, 2014	Midweek				
24 June, 2014	Midweek				
25 June, 2014	Midweek				
26 June, 2014	Midweek			2	
27 June, 2014	Midweek				
28 June, 2014	Weekend				
29 June, 2014	Weekend				
30 June, 2014	Midweek				4
01 July, 2014	Weekend				
02 July, 2014	Midweek				
03 July, 2014	Midweek				

Daily tally of interviews, catch and effort

Date	Day	Day Type	Area	Average Fishing Conditions	Interviews & Log Trips	Chinook	Coho	Sockeye	Halibut	Observed Fishing	Flight Time	Expanded Fishing
29 May, 2014	Thursday	Midweek	Area 19 (GS)		0							
30 May, 2014	Friday	Midweek	Area 19 (GS)		0							
31 May, 2014	Saturday	Weekend	Area 19 (GS)		0							
01 June, 2014	Sunday	Weekend	Area 19 (GS)		0							
02 June, 2014	Monday	Midweek	Area 19 (GS)		1							
03 June, 2014	Tuesday	Midweek	Area 19 (GS)		0					1	1031	1
04 June, 2014	Wednesday	Midweek	Area 19 (GS)		0							
05 June, 2014	Thursday	Midweek	Area 19 (GS)		0							
06 June, 2014	Friday	Midweek	Area 19 (GS)		0							
07 June, 2014	Saturday	Weekend	Area 19 (GS)	calm/rippled	5	2						
08 June, 2014	Sunday	Weekend	Area 19 (GS)	choppy	20	2				28	1045	40
09 June, 2014	Monday	Midweek	Area 19 (GS)		0							
10 June, 2014	Tuesday	Midweek	Area 19 (GS)		0					0	1039	0
11 June, 2014	Wednesday	Midweek	Area 19 (GS)		1							
12 June, 2014	Thursday	Midweek	Area 19 (GS)		0							
13 June, 2014	Friday	Midweek	Area 19 (GS)		1							
14 June, 2014	Saturday	Weekend	Area 19 (GS)	calm/rippled	6				1			
15 June, 2014	Sunday	Weekend	Area 19 (GS)		0							
16 June, 2014	Monday	Midweek	Area 19 (GS)		0							
17 June, 2014	Tuesday	Midweek	Area 19 (GS)		0							
18 June, 2014	Wednesday	Midweek	Area 19 (GS)		1	1						
19 June, 2014	Thursday	Midweek	Area 19 (GS)		1							
20 June, 2014	Friday	Midweek	Area 19 (GS)		1				1			
21 June, 2014	Saturday	Weekend	Area 19 (GS)	calm/rippled	14					16	1022	22
22 June, 2014	Sunday	Weekend	Area 19 (GS)	calm/rippled	1							
23 June, 2014	Monday	Midweek	Area 19 (GS)		1							
24 June, 2014	Tuesday	Midweek	Area 19 (GS)		0							
25 June, 2014	Wednesday	Midweek	Area 19 (GS)		0							
26 June, 2014	Thursday	Midweek	Area 19 (GS)	choppy	2							
27 June, 2014	Friday	Midweek	Area 19 (GS)		0					5	1031	7
28 June, 2014	Saturday	Weekend	Area 19 (GS)		0					0	1039	0
29 June, 2014	Sunday	Weekend	Area 19 (GS)		1					5	1029	7
30 June, 2014	Monday	Midweek	Area 19 (GS)	calm/rippled	6	3				13	1038	18
01 July, 2014	Tuesday (Canada Day)	Weekend	Area 19 (GS)		0							
02 July, 2014	Wednesday	Midweek	Area 19 (GS)		0							
03 July, 2014	Thursday	Midweek	Area 19 (GS)		0					6	0929	13
	Totals	Midweek	Area 19 (GS)	choppy	15	4			1	5*		7*
	Totals	Weekend	Area 19 (GS)	calm/rippled	47	4			1	12*		17*

* Average number of boats observed and Expanded

Simple area based cpue (catch per boat trip) expansion

				CPUE				Retained			
Day Type	Average Expanded Boats	Number of Days	Total estimated Effort	Chinook	Coho	Sockeye	Halibut	Chinook	Coho	Sockeye	Halibut
Weekend	17	9	153	0.0851			0.0213	13			3
Midweek	7	21	147	0.2667			0.0667	39			10

Recent years estimates of retained catch and effort

Year	Area	Month	Total Effort	Chinook Kept	Coho Kept	Sockeye Kept	Halibut Kept
2009	Area 19 (GS)	June	348				
2010	Area 19 (GS)	June	298	23			14
2011	Area 19 (GS)	June	467	136			
2012	Area 19 (GS)	June	203	14			14
2013	Area 19 (GS)	June	612	50			31
2014	Area 19 (GS)	June	490	15			5
5-Yr Avg	Area 19 (GS)	June	386	56			20

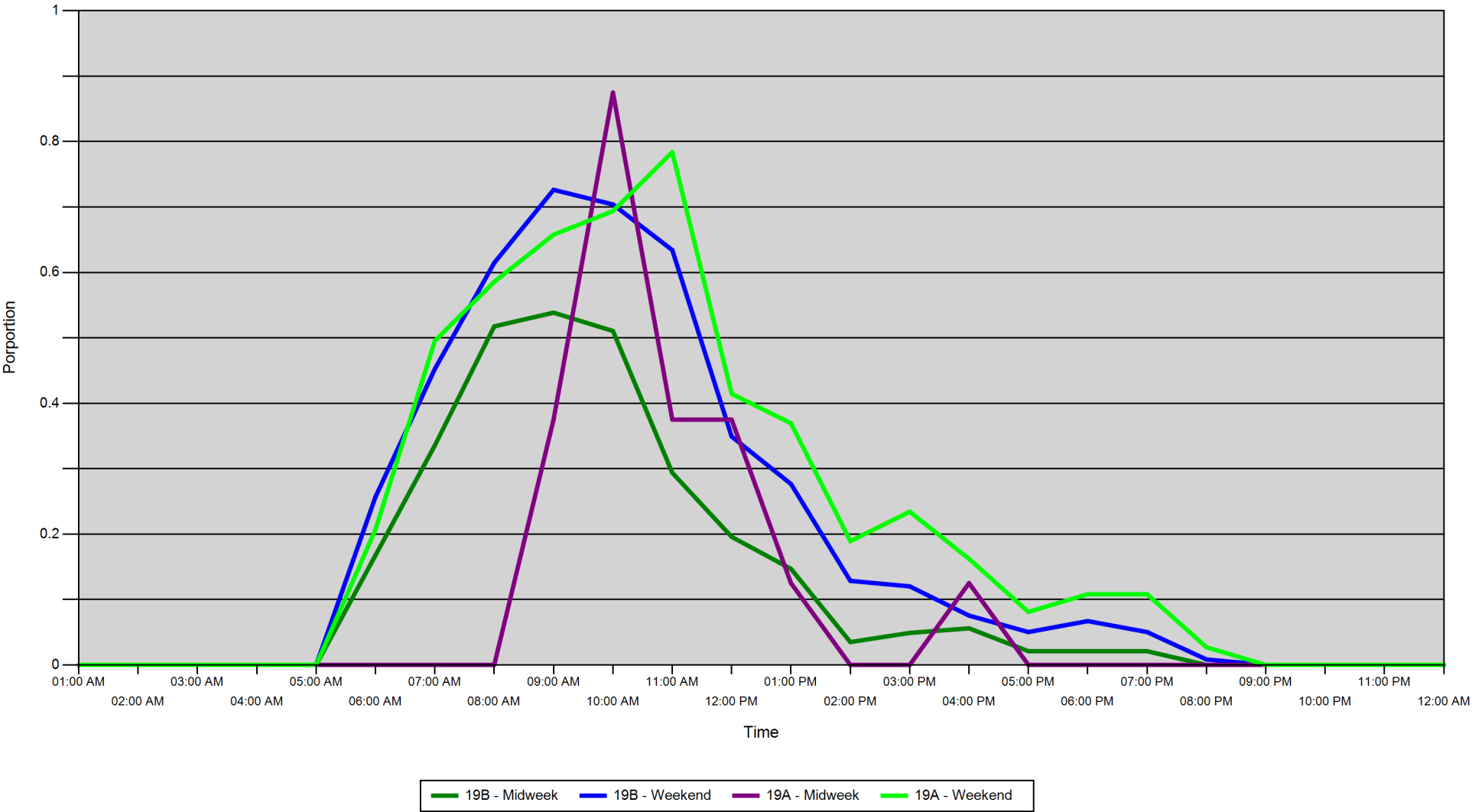
Sport Head Recovery Review

Year	Area	Month	Species	Creel Marked Catch	Creel Mark Rate	Creel Submission Rate	iRec Marked Catch	iRec Mark Rate	iRec Submission Rate	Sport Head recoveries
------	------	-------	---------	--------------------	-----------------	-----------------------	-------------------	----------------	----------------------	-----------------------

Guided Proprtions Review

Data Source	Year	Month	Area	Interviews	Guided Proportion
Creel	2014	06	Area 19 (GS)	48	0 %

Proportion of each day's fishing by hour



Area		01:00 AM	02:00 AM	03:00 AM	04:00 AM	05:00 AM	06:00 AM	07:00 AM	08:00 AM	09:00 AM	10:00 AM	11:00 AM	12:00 PM	01:00 PM	02:00 PM	03:00 PM	04:00 PM	05:00 PM	06:00 PM	07:00 PM	08:00 PM	09:00 PM	10:00 PM	11:00 PM	12:00 AM
19B	Midweek	0	0	0	0	0	0.168	0.336	0.517	0.538	0.51	0.294	0.196	0.147	0.035	0.049	0.056	0.021	0.021	0.021	0	0	0	0	0
	Weekend	0	0	0	0	0	0.257	0.453	0.615	0.726	0.704	0.634	0.349	0.277	0.128	0.12	0.075	0.05	0.067	0.05	0.008	0	0	0	0
19A	Midweek	0	0	0	0	0	0	0	0	0.375	0.875	0.375	0.375	0.125	0	0	0.125	0	0	0	0	0	0	0	0
	Weekend	0	0	0	0	0	0.207	0.496	0.586	0.658	0.694	0.784	0.414	0.369	0.189	0.234	0.162	0.081	0.108	0.108	0.027	0	0	0	0

Daily Fishing Conditions

		Cattle Point	Sidney
29 May, 2014	Midweek		
30 May, 2014	Midweek		
31 May, 2014	Weekend		
01 June, 2014	Weekend		
02 June, 2014	Midweek		
03 June, 2014	Midweek		
04 June, 2014	Midweek		
05 June, 2014	Midweek		
06 June, 2014	Midweek		
07 June, 2014	Weekend	calm/rippled	
08 June, 2014	Weekend		choppy
09 June, 2014	Midweek		
10 June, 2014	Midweek		
11 June, 2014	Midweek		
12 June, 2014	Midweek		
13 June, 2014	Midweek		
14 June, 2014	Weekend		calm/rippled
15 June, 2014	Weekend		
16 June, 2014	Midweek		
17 June, 2014	Midweek		
18 June, 2014	Midweek		
19 June, 2014	Midweek		
20 June, 2014	Midweek		
21 June, 2014	Weekend		calm/rippled
22 June, 2014	Weekend	calm/rippled	
23 June, 2014	Midweek		
24 June, 2014	Midweek		
25 June, 2014	Midweek		
26 June, 2014	Midweek		choppy
27 June, 2014	Midweek		
28 June, 2014	Weekend		
29 June, 2014	Weekend		
30 June, 2014	Midweek		calm/rippled
01 July, 2014	Weekend		
02 July, 2014	Midweek		
03 July, 2014	Midweek		