

Numbers of Interviews conducted contributing to the area by day and access site

		Cattle Point		Flemming		Pedder Bay	
		Evening	Morning	Evening	Morning	Evening	Morning
29 May, 2014	Midweek	3					
30 May, 2014	Midweek						
31 May, 2014	Weekend						
01 June, 2014	Weekend				21		
02 June, 2014	Midweek				10		
03 June, 2014	Midweek						
04 June, 2014	Midweek						6
05 June, 2014	Midweek						
06 June, 2014	Midweek						
07 June, 2014	Weekend		21				7
08 June, 2014	Weekend						
09 June, 2014	Midweek	6					
10 June, 2014	Midweek						
11 June, 2014	Midweek						
12 June, 2014	Midweek						
13 June, 2014	Midweek						
14 June, 2014	Weekend						
15 June, 2014	Weekend			3		2	
16 June, 2014	Midweek						
17 June, 2014	Midweek					1	
18 June, 2014	Midweek						
19 June, 2014	Midweek		10				
20 June, 2014	Midweek			5			
21 June, 2014	Weekend						
22 June, 2014	Weekend	18					
23 June, 2014	Midweek					4	
24 June, 2014	Midweek						
25 June, 2014	Midweek						
26 June, 2014	Midweek						
27 June, 2014	Midweek						
28 June, 2014	Weekend						3
29 June, 2014	Weekend			1			
30 June, 2014	Midweek						
01 July, 2014	Weekend						
02 July, 2014	Midweek						
03 July, 2014	Midweek						

Daily tally of interviews, catch and effort

Date	Day	Day Type	Area	Average Fishing Conditions	Interviews & Log Trips	Chinook	Coho	Sockeye	Halibut	Observed Fishing	Flight Time	Expanded Fishing
29 May, 2014	Thursday	Midweek	Area 19 (JDF)	choppy	3	1						
30 May, 2014	Friday	Midweek	Area 19 (JDF)		0							
31 May, 2014	Saturday	Weekend	Area 19 (JDF)		0							
01 June, 2014	Sunday	Weekend	Area 19 (JDF)	calm/rippled	22	9			7			
02 June, 2014	Monday	Midweek	Area 19 (JDF)	calm/rippled	10	1			4			
03 June, 2014	Tuesday	Midweek	Area 19 (JDF)		0					18	1042	32
04 June, 2014	Wednesday	Midweek	Area 19 (JDF)	choppy	6				13			
05 June, 2014	Thursday	Midweek	Area 19 (JDF)		0							
06 June, 2014	Friday	Midweek	Area 19 (JDF)		0							
07 June, 2014	Saturday	Weekend	Area 19 (JDF)	choppy	28	1			8			
08 June, 2014	Sunday	Weekend	Area 19 (JDF)		0					56	1042	80
09 June, 2014	Monday	Midweek	Area 19 (JDF)	choppy	6							
10 June, 2014	Tuesday	Midweek	Area 19 (JDF)		0					10	1024	18
11 June, 2014	Wednesday	Midweek	Area 19 (JDF)		0							
12 June, 2014	Thursday	Midweek	Area 19 (JDF)		0							
13 June, 2014	Friday	Midweek	Area 19 (JDF)		0							
14 June, 2014	Saturday	Weekend	Area 19 (JDF)		0							
15 June, 2014	Sunday	Weekend	Area 19 (JDF)	frequent whitecaps	5							
16 June, 2014	Monday	Midweek	Area 19 (JDF)		0							
17 June, 2014	Tuesday	Midweek	Area 19 (JDF)	frequent whitecaps	1							
18 June, 2014	Wednesday	Midweek	Area 19 (JDF)		0							
19 June, 2014	Thursday	Midweek	Area 19 (JDF)	calm/rippled	10	2						
20 June, 2014	Friday	Midweek	Area 19 (JDF)	choppy	5	1			2			
21 June, 2014	Saturday	Weekend	Area 19 (JDF)		0					92	1033	131
22 June, 2014	Sunday	Weekend	Area 19 (JDF)	calm/rippled	18				1			
23 June, 2014	Monday	Midweek	Area 19 (JDF)	frequent whitecaps	4				3			
24 June, 2014	Tuesday	Midweek	Area 19 (JDF)		0							
25 June, 2014	Wednesday	Midweek	Area 19 (JDF)		0							
26 June, 2014	Thursday	Midweek	Area 19 (JDF)		0							
27 June, 2014	Friday	Midweek	Area 19 (JDF)		0					9	1008	16
28 June, 2014	Saturday	Weekend	Area 19 (JDF)	choppy	3				2	28	1053	40
29 June, 2014	Sunday	Weekend	Area 19 (JDF)	choppy	1	2				28	1024	40
30 June, 2014	Monday	Midweek	Area 19 (JDF)		0					39	1045	68
01 July, 2014	Tuesday (Canada Day)	Weekend	Area 19 (JDF)		0							
02 July, 2014	Wednesday	Midweek	Area 19 (JDF)		0							
03 July, 2014	Thursday	Midweek	Area 19 (JDF)		0					16	0922	32
	Totals	Midweek	Area 19 (JDF)	choppy	42	4			22	19*		34*
	Totals	Weekend	Area 19 (JDF)	choppy	77	12			18	51*		73*

* Average number of boats observed and Expanded

Simple area based cpue (catch per boat trip) expansion

				CPUE				Retained			
Day Type	Average Expanded Boats	Number of Days	Total estimated Effort	Chinook	Coho	Sockeye	Halibut	Chinook	Coho	Sockeye	Halibut
Midweek	34	21	714	0.0952			0.5238	68			374
Weekend	73	9	657	0.1558			0.2338	102			154

Recent years estimates of retained catch and effort

Year	Area	Month	Total Effort	Chinook Kept	Coho Kept	Sockeye Kept	Halibut Kept
2009	Area 19 (JDF)	June	1381	378			168
2010	Area 19 (JDF)	June	1846	217			793
2011	Area 19 (JDF)	June	903	269			112
2012	Area 19 (JDF)	June	1338	180	7		451
2013	Area 19 (JDF)	June	2240	597	89		1019
2014	Area 19 (JDF)	June	1656	264			684
5-Yr Avg	Area 19 (JDF)	June	1542	328	48		509

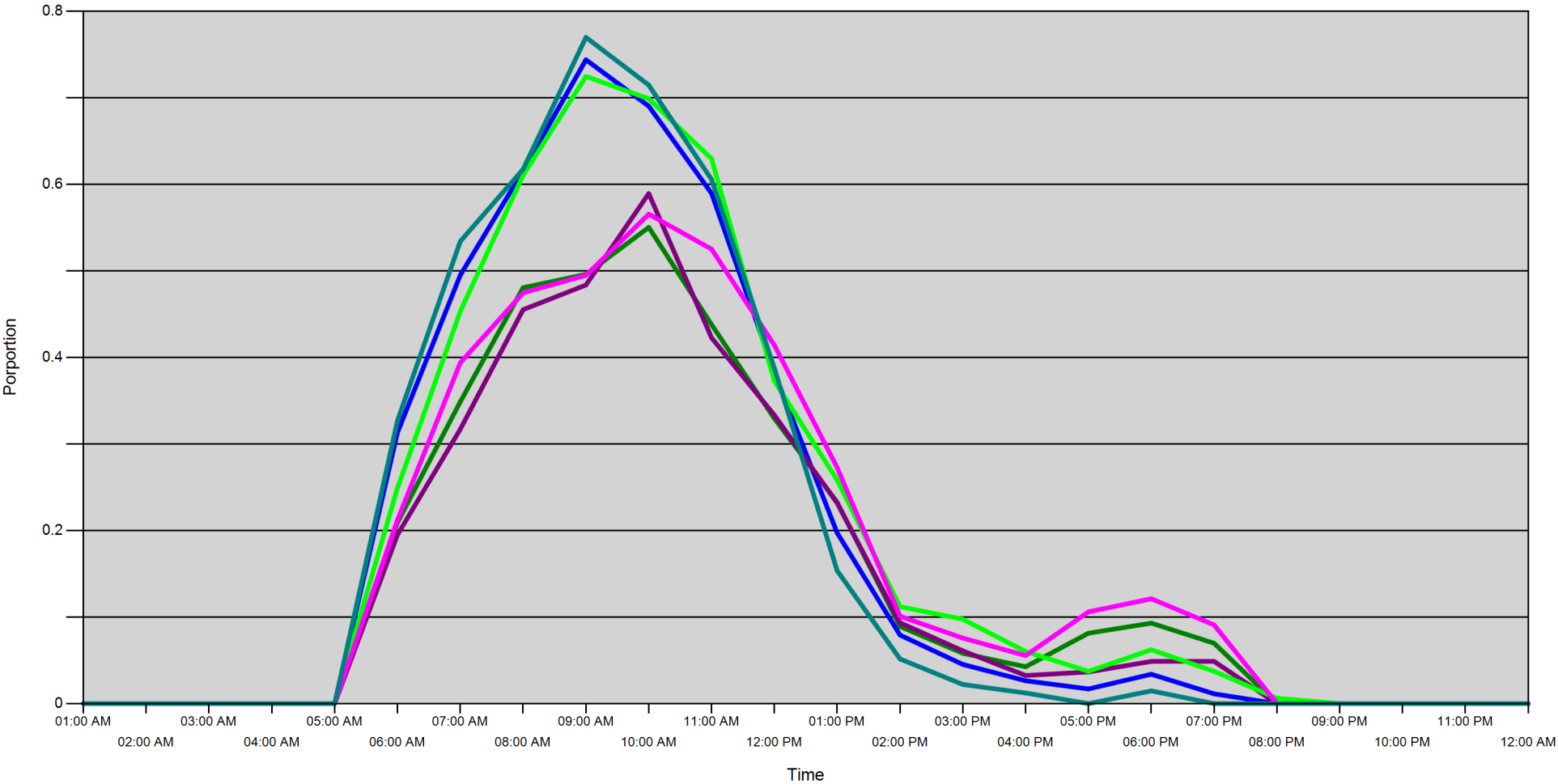
Sport Head Recovery Review

Year	Area	Month	Species	Creel Marked Catch	Creel Mark Rate	Creel Submission Rate	iRec Marked Catch	iRec Mark Rate	iRec Submission Rate	Sport Head recoveries
2014	Area 19 (JDF)	6	Chinook	149	56 %	36 %	933	67 %	6 %	53

Guided Proprtions Review

Data Source	Year	Month	Area	Interviews	Guided Proportion
Creel	2014	06	Area 19 (JDF)	118	2 %

Proportion of each day's fishing by hour



Area		01:00 AM	02:00 AM	03:00 AM	04:00 AM	05:00 AM	06:00 AM	07:00 AM	08:00 AM	09:00 AM	10:00 AM	11:00 AM	12:00 PM	01:00 PM	02:00 PM	03:00 PM	04:00 PM	05:00 PM	06:00 PM	07:00 PM	08:00 PM	09:00 PM	10:00 PM	11:00 PM	12:00 AM
19D	Midweek	0	0	0	0	0	0.209	0.349	0.481	0.496	0.55	0.438	0.329	0.233	0.089	0.058	0.043	0.081	0.093	0.07	0	0	0	0	0
	Weekend	0	0	0	0	0	0.313	0.495	0.616	0.744	0.69	0.59	0.382	0.197	0.079	0.045	0.026	0.017	0.034	0.011	0	0	0	0	0
19C	Midweek	0	0	0	0	0	0.195	0.317	0.455	0.484	0.589	0.423	0.333	0.232	0.094	0.061	0.033	0.037	0.049	0.049	0	0	0	0	0
	Weekend	0	0	0	0	0	0.249	0.453	0.611	0.725	0.699	0.63	0.373	0.258	0.112	0.098	0.06	0.037	0.062	0.037	0.006	0	0	0	0
19E	Midweek	0	0	0	0	0	0.212	0.394	0.475	0.495	0.566	0.525	0.414	0.273	0.101	0.076	0.056	0.106	0.121	0.091	0	0	0	0	0
	Weekend	0	0	0	0	0	0.327	0.534	0.618	0.77	0.715	0.606	0.387	0.154	0.052	0.022	0.012	0	0.015	0	0	0	0	0	0

Daily Fishing Conditions

		Cattle Point	Flemming	Pedder Bay
29 May, 2014	Midweek	choppy		
30 May, 2014	Midweek			
31 May, 2014	Weekend			
01 June, 2014	Weekend		calm/rippled	
02 June, 2014	Midweek		calm/rippled	
03 June, 2014	Midweek			
04 June, 2014	Midweek			choppy
05 June, 2014	Midweek			
06 June, 2014	Midweek			
07 June, 2014	Weekend	calm/rippled		frequent whitecaps
08 June, 2014	Weekend			
09 June, 2014	Midweek	choppy		
10 June, 2014	Midweek			
11 June, 2014	Midweek			
12 June, 2014	Midweek			
13 June, 2014	Midweek			
14 June, 2014	Weekend			
15 June, 2014	Weekend		frequent whitecaps	frequent whitecaps
16 June, 2014	Midweek			
17 June, 2014	Midweek			frequent whitecaps
18 June, 2014	Midweek			
19 June, 2014	Midweek	calm/rippled		
20 June, 2014	Midweek		choppy	
21 June, 2014	Weekend			
22 June, 2014	Weekend	calm/rippled		
23 June, 2014	Midweek			frequent whitecaps
24 June, 2014	Midweek			
25 June, 2014	Midweek			
26 June, 2014	Midweek			
27 June, 2014	Midweek			
28 June, 2014	Weekend			choppy
29 June, 2014	Weekend		choppy	
30 June, 2014	Midweek			
01 July, 2014	Weekend			
02 July, 2014	Midweek			
03 July, 2014	Midweek			