

Numbers of Interviews conducted contributing to the area by day and access site

		Becher Bay		Flemming	Jock's Dock (Crab Shack)		Pedder Bay	
		Evening	Morning	Morning	Evening	Morning	Evening	Morning
29 May, 2014	Midweek							
30 May, 2014	Midweek							
31 May, 2014	Weekend							
01 June, 2014	Weekend			4	20			
02 June, 2014	Midweek					15		
03 June, 2014	Midweek	3						
04 June, 2014	Midweek							4
05 June, 2014	Midweek							
06 June, 2014	Midweek							
07 June, 2014	Weekend							13
08 June, 2014	Weekend				9			
09 June, 2014	Midweek							
10 June, 2014	Midweek							
11 June, 2014	Midweek				17			
12 June, 2014	Midweek							
13 June, 2014	Midweek							
14 June, 2014	Weekend	8						
15 June, 2014	Weekend						5	
16 June, 2014	Midweek		4					
17 June, 2014	Midweek						12	
18 June, 2014	Midweek							
19 June, 2014	Midweek							
20 June, 2014	Midweek							
21 June, 2014	Weekend					34		
22 June, 2014	Weekend							
23 June, 2014	Midweek						11	
24 June, 2014	Midweek				15			
25 June, 2014	Midweek							
26 June, 2014	Midweek							
27 June, 2014	Midweek							
28 June, 2014	Weekend							18
29 June, 2014	Weekend		24					
30 June, 2014	Midweek					28		
01 July, 2014	Weekend	9						
02 July, 2014	Midweek							
03 July, 2014	Midweek							

Daily tally of interviews, catch and effort

Date	Day	Day Type	Area	Average Fishing Conditions	Interviews & Log Trips	Chinook	Coho	Sockeye	Halibut	Observed Fishing	Flight Time	Expanded Fishing
29 May, 2014	Thursday	Midweek	Area 20 (East)		0							
30 May, 2014	Friday	Midweek	Area 20 (East)		0							
31 May, 2014	Saturday	Weekend	Area 20 (East)		0							
01 June, 2014	Sunday	Weekend	Area 20 (East)	choppy	25	24			5			
02 June, 2014	Monday	Midweek	Area 20 (East)	choppy	15	9			1			
03 June, 2014	Tuesday	Midweek	Area 20 (East)	choppy	3					41	1031	65
04 June, 2014	Wednesday	Midweek	Area 20 (East)	choppy	4							
05 June, 2014	Thursday	Midweek	Area 20 (East)		0							
06 June, 2014	Friday	Midweek	Area 20 (East)		0							
07 June, 2014	Saturday	Weekend	Area 20 (East)	frequent whitecaps	13	4						
08 June, 2014	Sunday	Weekend	Area 20 (East)	frequent whitecaps	9	8				74	1031	102
09 June, 2014	Monday	Midweek	Area 20 (East)		0							
10 June, 2014	Tuesday	Midweek	Area 20 (East)		0					8	0952	14
11 June, 2014	Wednesday	Midweek	Area 20 (East)	choppy	18	22						
12 June, 2014	Thursday	Midweek	Area 20 (East)		1	2						
13 June, 2014	Friday	Midweek	Area 20 (East)		0							
14 June, 2014	Saturday	Weekend	Area 20 (East)	frequent whitecaps	9	17						
15 June, 2014	Sunday	Weekend	Area 20 (East)	frequent whitecaps	6	3			1			
16 June, 2014	Monday	Midweek	Area 20 (East)	choppy	6	7						
17 June, 2014	Tuesday	Midweek	Area 20 (East)	frequent whitecaps	12	1						
18 June, 2014	Wednesday	Midweek	Area 20 (East)		1	1						
19 June, 2014	Thursday	Midweek	Area 20 (East)		0							
20 June, 2014	Friday	Midweek	Area 20 (East)		0							
21 June, 2014	Saturday	Weekend	Area 20 (East)	calm/rippled	34	11			5	202	1019	280
22 June, 2014	Sunday	Weekend	Area 20 (East)		0							
23 June, 2014	Monday	Midweek	Area 20 (East)	frequent whitecaps	12	4						
24 June, 2014	Tuesday	Midweek	Area 20 (East)	choppy	17	16			2			
25 June, 2014	Wednesday	Midweek	Area 20 (East)		1	4						
26 June, 2014	Thursday	Midweek	Area 20 (East)		1	1						
27 June, 2014	Friday	Midweek	Area 20 (East)		0					103	0959	181
28 June, 2014	Saturday	Weekend	Area 20 (East)	choppy	18	25				197	1038	273
29 June, 2014	Sunday	Weekend	Area 20 (East)	choppy	25	26				223	1006	309
30 June, 2014	Monday	Midweek	Area 20 (East)	choppy	30	30			2			
01 July, 2014	Tuesday (Canada Day)	Weekend	Area 20 (East)	calm/rippled	9	7						
02 July, 2014	Wednesday	Midweek	Area 20 (East)		0							
03 July, 2014	Thursday	Midweek	Area 20 (East)		2	7			1	63	0905	110
	Totals	Midweek	Area 20 (East)	choppy	121	97			5	51*		87*
	Totals	Weekend	Area 20 (East)	choppy	139	118			11	174*		241*

\* Average number of boats observed and Expanded

Simple area based cpue (catch per boat trip) expansion

				CPUE				Retained			
Day Type	Average Expanded Boats	Number of Days	Total estimated Effort	Chinook	Coho	Sockeye	Halibut	Chinook	Coho	Sockeye	Halibut
Midweek	87	21	1827	0.8017			0.0413	1465			75
Weekend	241	9	2169	0.8489			0.0791	1841			172

Recent years estimates of retained catch and effort

Year	Area	Month	Total Effort	Chinook Kept	Coho Kept	Sockeye Kept	Halibut Kept
2009	Area 20 (East)	June	8040	4364	609	45	118
2010	Area 20 (East)	June	3900	1484	196		261
2011	Area 20 (East)	June	2309	775	2		120
2012	Area 20 (East)	June	3012	1962	43		138
2013	Area 20 (East)	June	5240	3462	2741		988
2014	Area 20 (East)	June	4014	2718			169
5-Yr Avg	Area 20 (East)	June	4500	2409	718	45	325

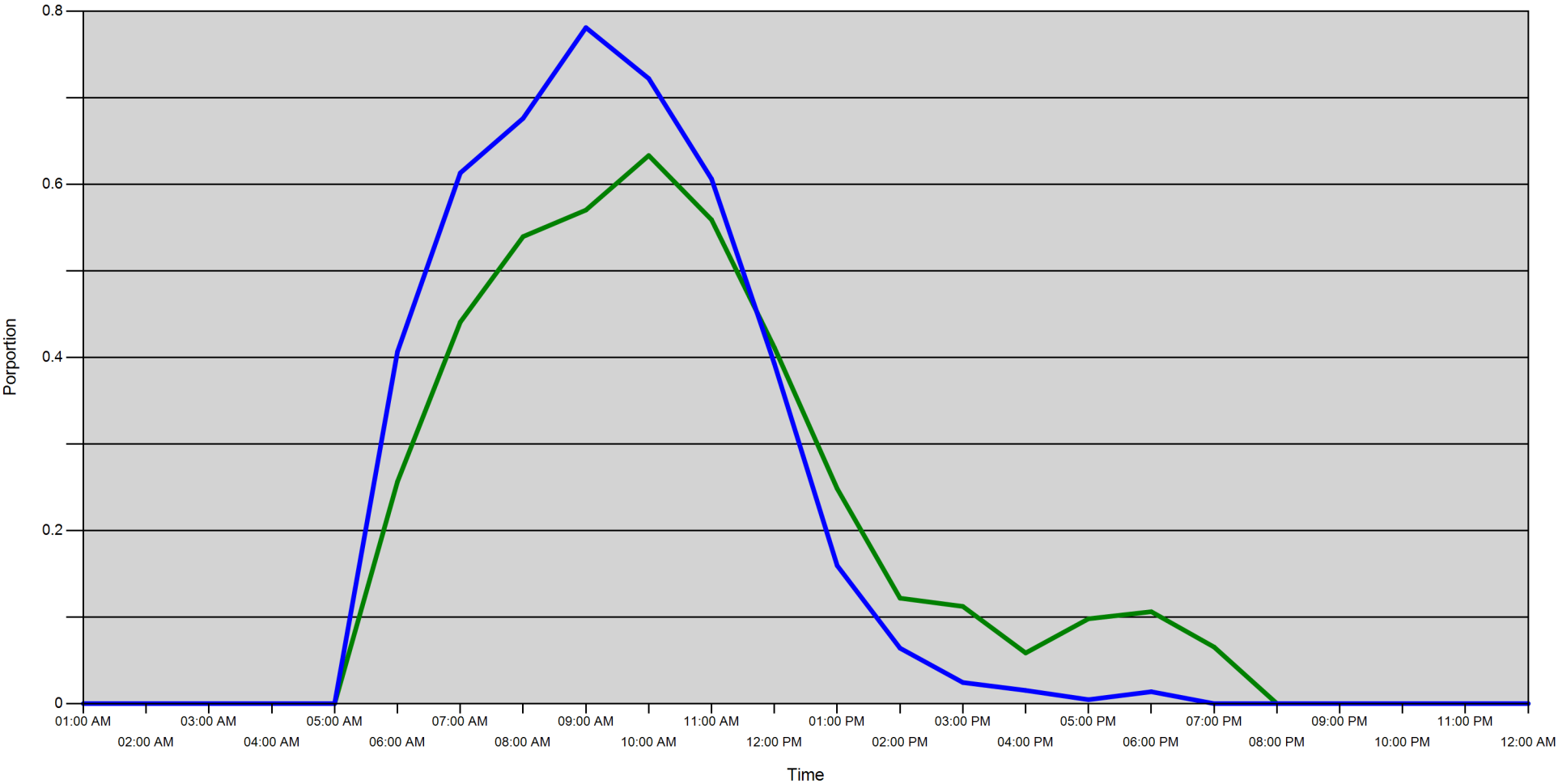
Sport Head Recovery Review

Year	Area	Month	Species	Creel Marked Catch	Creel Mark Rate	Creel Submission Rate	iRec Marked Catch	iRec Mark Rate	iRec Submission Rate	Sport Head recoveries
2014	Area 20	6	Coho	7	64 %	229 %	125	100 %	13 %	16
2014	Area 20	6	Chinook	1032	32 %	56 %	1462	48 %	39 %	576

Guided Proprtions Review

Data Source	Year	Month	Area	Interviews	Guided Proportion
Creel	2014	06	Area 20	489	13 %

Proportion of each day's fishing by hour



20D - Midweek 20D - Weekend

Area		01:00 AM	02:00 AM	03:00 AM	04:00 AM	05:00 AM	06:00 AM	07:00 AM	08:00 AM	09:00 AM	10:00 AM	11:00 AM	12:00 PM	01:00 PM	02:00 PM	03:00 PM	04:00 PM	05:00 PM	06:00 PM	07:00 PM	08:00 PM	09:00 PM	10:00 PM	11:00 PM	12:00 AM
20D	Midweek	0	0	0	0	0	0.256	0.441	0.54	0.57	0.633	0.559	0.412	0.248	0.122	0.112	0.059	0.098	0.106	0.065	0	0	0	0	0
	Weekend	0	0	0	0	0	0.407	0.613	0.676	0.781	0.722	0.606	0.393	0.159	0.064	0.024	0.015	0.005	0.014	0	0	0	0	0	0

Daily Fishing Conditions

		Becher Bay	Flemming	Jock's Dock (Crab Shack)	Pedder Bay
29 May, 2014	Midweek				
30 May, 2014	Midweek				
31 May, 2014	Weekend				
01 June, 2014	Weekend		calm/rippled	choppy	
02 June, 2014	Midweek			choppy	
03 June, 2014	Midweek	choppy			
04 June, 2014	Midweek				choppy
05 June, 2014	Midweek				
06 June, 2014	Midweek				
07 June, 2014	Weekend				frequent whitecaps
08 June, 2014	Weekend			frequent whitecaps	
09 June, 2014	Midweek				
10 June, 2014	Midweek				
11 June, 2014	Midweek			choppy	
12 June, 2014	Midweek				
13 June, 2014	Midweek				
14 June, 2014	Weekend	frequent whitecaps			
15 June, 2014	Weekend				frequent whitecaps
16 June, 2014	Midweek	choppy			
17 June, 2014	Midweek				frequent whitecaps
18 June, 2014	Midweek				
19 June, 2014	Midweek				
20 June, 2014	Midweek				
21 June, 2014	Weekend			calm/rippled	
22 June, 2014	Weekend				
23 June, 2014	Midweek				frequent whitecaps
24 June, 2014	Midweek			choppy	
25 June, 2014	Midweek				
26 June, 2014	Midweek				
27 June, 2014	Midweek				
28 June, 2014	Weekend				choppy
29 June, 2014	Weekend	choppy			
30 June, 2014	Midweek			choppy	
01 July, 2014	Weekend	calm/rippled			
02 July, 2014	Midweek				
03 July, 2014	Midweek				