

Numbers of Interviews conducted contributing to the area by day and access site

		Cattle Point		Cowichan Bay	Sidney	
		Evening	Morning	Evening	Evening	Morning
28 April, 2015	Midweek					
29 April, 2015	Midweek					
30 April, 2015	Midweek					
01 May, 2015	Midweek					
02 May, 2015	Weekend					
03 May, 2015	Weekend				34	
04 May, 2015	Midweek			1		
05 May, 2015	Midweek					
06 May, 2015	Midweek					
07 May, 2015	Midweek					
08 May, 2015	Midweek					
09 May, 2015	Weekend					
10 May, 2015	Weekend					17
11 May, 2015	Midweek					
12 May, 2015	Midweek					
13 May, 2015	Midweek					
14 May, 2015	Midweek		1			
15 May, 2015	Midweek					
16 May, 2015	Weekend					
17 May, 2015	Weekend					
18 May, 2015	Weekend					
19 May, 2015	Midweek					
20 May, 2015	Midweek					
21 May, 2015	Midweek					
22 May, 2015	Midweek				8	
23 May, 2015	Weekend					
24 May, 2015	Weekend					
25 May, 2015	Midweek					
26 May, 2015	Midweek					
27 May, 2015	Midweek					
28 May, 2015	Midweek					
29 May, 2015	Midweek					
30 May, 2015	Weekend			3		
31 May, 2015	Weekend	1				
01 June, 2015	Midweek					
02 June, 2015	Midweek			1		
03 June, 2015	Midweek					

Daily tally of interviews, catch and effort

Date	Day	Day Type	Area	Average Fishing Conditions	Interviews & Log Trips	Chinook	Coho	Sockeye	Halibut	Observed Fishing	Flight Time	Expanded Fishing
28 April, 2015	Tuesday	Midweek	Area 19 (GS)		0							
29 April, 2015	Wednesday	Midweek	Area 19 (GS)		0					6	1212	12
30 April, 2015	Thursday	Midweek	Area 19 (GS)		0							
01 May, 2015	Friday	Midweek	Area 19 (GS)		0							
02 May, 2015	Saturday	Weekend	Area 19 (GS)		1	1						
03 May, 2015	Sunday	Weekend	Area 19 (GS)	calm/rippled	34	1			3			
04 May, 2015	Monday	Midweek	Area 19 (GS)	calm/rippled	1							
05 May, 2015	Tuesday	Midweek	Area 19 (GS)		0					1	1031	2
06 May, 2015	Wednesday	Midweek	Area 19 (GS)		1							
07 May, 2015	Thursday	Midweek	Area 19 (GS)		0							
08 May, 2015	Friday	Midweek	Area 19 (GS)		0							
09 May, 2015	Saturday	Weekend	Area 19 (GS)		0					21	1055	44
10 May, 2015	Sunday	Weekend	Area 19 (GS)	calm/rippled	18				1			
11 May, 2015	Monday	Midweek	Area 19 (GS)		0							
12 May, 2015	Tuesday	Midweek	Area 19 (GS)		0							
13 May, 2015	Wednesday	Midweek	Area 19 (GS)		0							
14 May, 2015	Thursday	Midweek	Area 19 (GS)	calm/rippled	1				1			
15 May, 2015	Friday	Midweek	Area 19 (GS)		0							
16 May, 2015	Saturday	Weekend	Area 19 (GS)		0							
17 May, 2015	Sunday	Weekend	Area 19 (GS)		1							
18 May, 2015	Monday (Victoria Day)	Weekend	Area 19 (GS)		0					24	1041	50
19 May, 2015	Tuesday	Midweek	Area 19 (GS)		0							
20 May, 2015	Wednesday	Midweek	Area 19 (GS)		0							
21 May, 2015	Thursday	Midweek	Area 19 (GS)		0					2	1029	4
22 May, 2015	Friday	Midweek	Area 19 (GS)	choppy	8				1			
23 May, 2015	Saturday	Weekend	Area 19 (GS)		0					11	1056	23
24 May, 2015	Sunday	Weekend	Area 19 (GS)		1	1						
25 May, 2015	Monday	Midweek	Area 19 (GS)		0							
26 May, 2015	Tuesday	Midweek	Area 19 (GS)		0							
27 May, 2015	Wednesday	Midweek	Area 19 (GS)		0							
28 May, 2015	Thursday	Midweek	Area 19 (GS)		1	1				10	1045	17
29 May, 2015	Friday	Midweek	Area 19 (GS)		0							
30 May, 2015	Saturday	Weekend	Area 19 (GS)	choppy	4	3						
31 May, 2015	Sunday	Weekend	Area 19 (GS)	calm/rippled	1							
01 June, 2015	Monday	Midweek	Area 19 (GS)		0							
02 June, 2015	Tuesday	Midweek	Area 19 (GS)	calm/rippled	1					5	1014	9
03 June, 2015	Wednesday	Midweek	Area 19 (GS)		1	2						
	Totals	Midweek	Area 19 (GS)	calm/rippled	12	1			2	4*		8*
	Totals	Weekend	Area 19 (GS)	calm/rippled	60	6			4	19*		39*

* Average number of boats observed and Expanded

Simple area based cpue (catch per boat trip) expansion

				CPUE				Retained			
Day Type	Average Expanded Boats	Number of Days	Total estimated Effort	Chinook	Coho	Sockeye	Halibut	Chinook	Coho	Sockeye	Halibut
Midweek	8	20	160	0.0833			0.1667	13			27
Weekend	39	11	429	0.1			0.0667	43			29

Recent years estimates of retained catch and effort

Year	Area	Month	Total Effort	Chinook Kept	Coho Kept	Sockeye Kept	Halibut Kept
2010	Area 19 (GS)	May	457	80			116
2011	Area 19 (GS)	May	507	25			69
2012	Area 19 (GS)	May	633	75			36
2013	Area 19 (GS)	May	372	49			27
2014	Area 19 (GS)	May	485				77
2015	Area 19 (GS)	May	583	40			65
5-Yr Avg	Area 19 (GS)	May	491	57			65

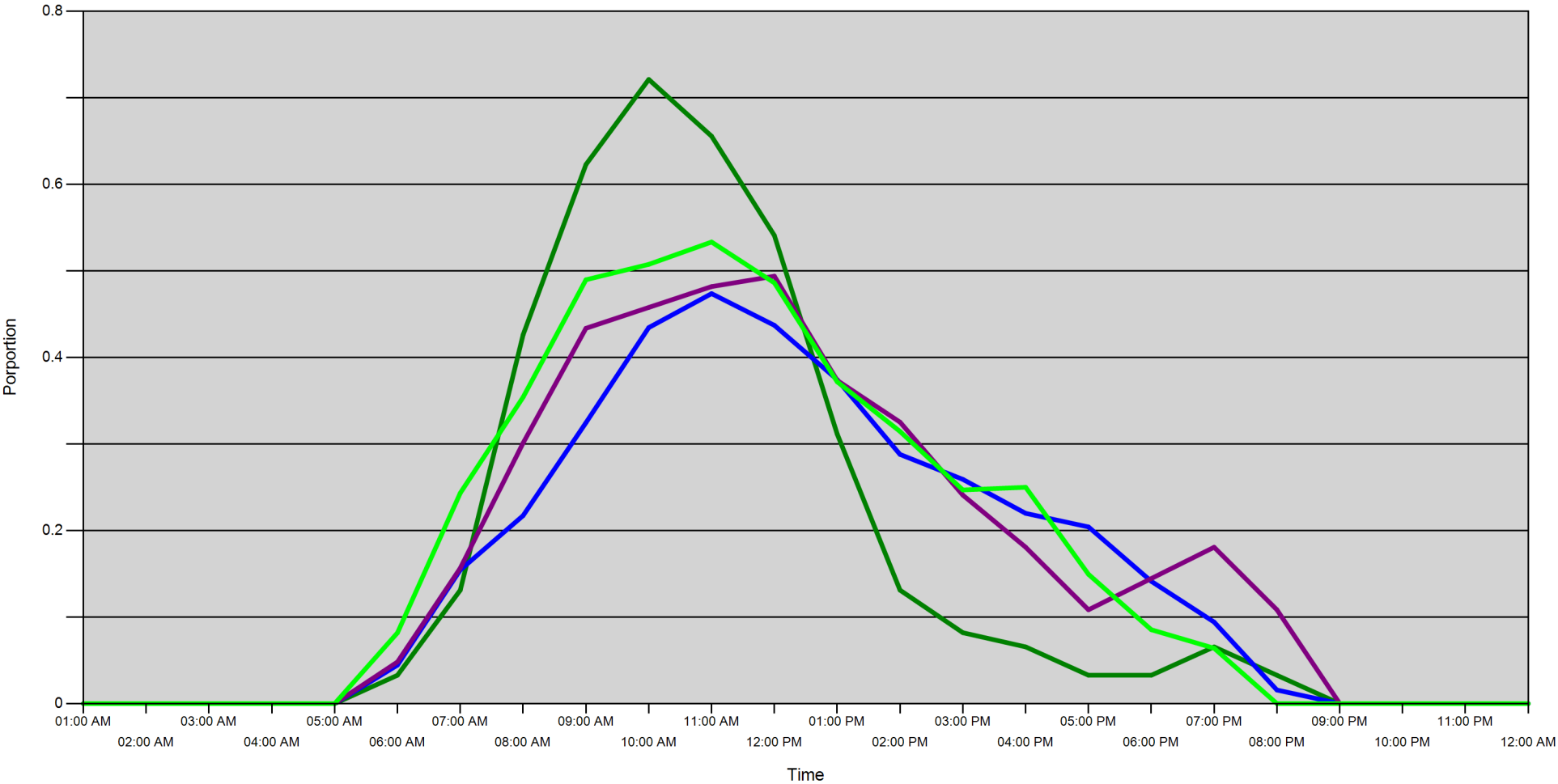
Sport Head Recovery Review

Year	Area	Month	Species	Creel Marked Catch	Creel Mark Rate	Creel Submission Rate	iRec Marked Catch	iRec Mark Rate	iRec Submission Rate	Sport Head recoveries
------	------	-------	---------	--------------------	-----------------	-----------------------	-------------------	----------------	----------------------	-----------------------

Guided Proprtions Review

Data Source	Year	Month	Area	Interviews	Guided Proportion
Creel	2015	05	Area 19 (GS)	65	0 %

Proportion of each day's fishing by hour



Area		01:00 AM	02:00 AM	03:00 AM	04:00 AM	05:00 AM	06:00 AM	07:00 AM	08:00 AM	09:00 AM	10:00 AM	11:00 AM	12:00 PM	01:00 PM	02:00 PM	03:00 PM	04:00 PM	05:00 PM	06:00 PM	07:00 PM	08:00 PM	09:00 PM	10:00 PM	11:00 PM	12:00 AM
19B	Midweek	0	0	0	0	0	0.033	0.131	0.426	0.623	0.721	0.656	0.541	0.311	0.131	0.082	0.066	0.033	0.033	0.066	0.033	0	0	0	0
	Weekend	0	0	0	0	0	0.045	0.154	0.217	0.325	0.435	0.474	0.437	0.374	0.288	0.259	0.22	0.204	0.141	0.094	0.016	0	0	0	0
19A	Midweek	0	0	0	0	0	0.048	0.157	0.301	0.434	0.458	0.482	0.494	0.373	0.325	0.241	0.181	0.108	0.145	0.181	0.108	0	0	0	0
	Weekend	0	0	0	0	0	0.082	0.243	0.354	0.49	0.508	0.533	0.486	0.372	0.315	0.247	0.25	0.149	0.085	0.064	0	0	0	0	0

Daily Fishing Conditions

		Cattle Point	Cowichan Bay	Sidney
28 April, 2015	Midweek			
29 April, 2015	Midweek			
30 April, 2015	Midweek			
01 May, 2015	Midweek			
02 May, 2015	Weekend			
03 May, 2015	Weekend			calm/rippled
04 May, 2015	Midweek		calm/rippled	
05 May, 2015	Midweek			
06 May, 2015	Midweek			
07 May, 2015	Midweek			
08 May, 2015	Midweek			
09 May, 2015	Weekend			
10 May, 2015	Weekend			calm/rippled
11 May, 2015	Midweek			
12 May, 2015	Midweek			
13 May, 2015	Midweek			
14 May, 2015	Midweek	calm/rippled		
15 May, 2015	Midweek			
16 May, 2015	Weekend			
17 May, 2015	Weekend			
18 May, 2015	Weekend			
19 May, 2015	Midweek			
20 May, 2015	Midweek			
21 May, 2015	Midweek			
22 May, 2015	Midweek			choppy
23 May, 2015	Weekend			
24 May, 2015	Weekend			
25 May, 2015	Midweek			
26 May, 2015	Midweek			
27 May, 2015	Midweek			
28 May, 2015	Midweek			
29 May, 2015	Midweek			
30 May, 2015	Weekend		choppy	
31 May, 2015	Weekend	calm/rippled		
01 June, 2015	Midweek			
02 June, 2015	Midweek		calm/rippled	
03 June, 2015	Midweek			