

Numbers of Interviews conducted contributing to the area by day and access site

		Cowichan Bay		Crofton Ramp	Sidney	
		Evening	Morning	Morning	Evening	Morning
29 May, 2015	Midweek					
30 May, 2015	Weekend	7				
31 May, 2015	Weekend					
01 June, 2015	Midweek					
02 June, 2015	Midweek					
03 June, 2015	Midweek					
04 June, 2015	Midweek					
05 June, 2015	Midweek					
06 June, 2015	Weekend					
07 June, 2015	Weekend			2		
08 June, 2015	Midweek					
09 June, 2015	Midweek					
10 June, 2015	Midweek					4
11 June, 2015	Midweek					
12 June, 2015	Midweek					
13 June, 2015	Weekend					9
14 June, 2015	Weekend	7				
15 June, 2015	Midweek					
16 June, 2015	Midweek					
17 June, 2015	Midweek					
18 June, 2015	Midweek					
19 June, 2015	Midweek	7				3
20 June, 2015	Weekend					
21 June, 2015	Weekend		11			
22 June, 2015	Midweek					
23 June, 2015	Midweek					
24 June, 2015	Midweek		3			
25 June, 2015	Midweek					
26 June, 2015	Midweek					
27 June, 2015	Weekend				3	
28 June, 2015	Weekend					
29 June, 2015	Midweek				6	
30 June, 2015	Midweek					
01 July, 2015	Weekend					3
02 July, 2015	Midweek					
03 July, 2015	Midweek					

Daily tally of interviews, catch and effort

Date	Day	Day Type	Area	Average Fishing Conditions	Interviews & Log Trips	Chinook	Coho	Sockeye	Halibut	Observed Fishing	Flight Time	Expanded Fishing
29 May, 2015	Friday	Midweek	Area 18		0							
30 May, 2015	Saturday	Weekend	Area 18	choppy	7							
31 May, 2015	Sunday	Weekend	Area 18		0							
01 June, 2015	Monday	Midweek	Area 18		0							
02 June, 2015	Tuesday	Midweek	Area 18		0					1	1024	2
03 June, 2015	Wednesday	Midweek	Area 18		1							
04 June, 2015	Thursday	Midweek	Area 18		0							
05 June, 2015	Friday	Midweek	Area 18		0							
06 June, 2015	Saturday	Weekend	Area 18		0							
07 June, 2015	Sunday	Weekend	Area 18	calm/rippled	3					31	1004	63
08 June, 2015	Monday	Midweek	Area 18		0							
09 June, 2015	Tuesday	Midweek	Area 18		1							
10 June, 2015	Wednesday	Midweek	Area 18	choppy	5							
11 June, 2015	Thursday	Midweek	Area 18		0					7	0955	15
12 June, 2015	Friday	Midweek	Area 18		1							
13 June, 2015	Saturday	Weekend	Area 18	calm/rippled	9	1						
14 June, 2015	Sunday	Weekend	Area 18	calm/rippled	7					49	1016	98
15 June, 2015	Monday	Midweek	Area 18		0					12	0954	26
16 June, 2015	Tuesday	Midweek	Area 18		0							
17 June, 2015	Wednesday	Midweek	Area 18		0							
18 June, 2015	Thursday	Midweek	Area 18		0							
19 June, 2015	Friday	Midweek	Area 18	calm/rippled	10	2						
20 June, 2015	Saturday	Weekend	Area 18		0							
21 June, 2015	Sunday	Weekend	Area 18	calm/rippled	11	2				39	1014	79
22 June, 2015	Monday	Midweek	Area 18		0							
23 June, 2015	Tuesday	Midweek	Area 18		0							
24 June, 2015	Wednesday	Midweek	Area 18	calm/rippled	3							
25 June, 2015	Thursday	Midweek	Area 18		1							
26 June, 2015	Friday	Midweek	Area 18		0							
27 June, 2015	Saturday	Weekend	Area 18	calm/rippled	3	1				21	1001	44
28 June, 2015	Sunday	Weekend	Area 18		0							
29 June, 2015	Monday	Midweek	Area 18	calm/rippled	6	2						
30 June, 2015	Tuesday	Midweek	Area 18		1					18	0953	39
01 July, 2015	Wednesday (Canada Day)	Weekend	Area 18	calm/rippled	3							
02 July, 2015	Thursday	Midweek	Area 18		0							
03 July, 2015	Friday	Midweek	Area 18		0							
	Totals	Midweek	Area 18	calm/rippled	29	4				10*		21*
	Totals	Weekend	Area 18	calm/rippled	33	4				35*		71*

* Average number of boats observed and Expanded

Simple area based cpue (catch per boat trip) expansion

				CPUE				Retained			
Day Type	Average Expanded Boats	Number of Days	Total estimated Effort	Chinook	Coho	Sockeye	Halibut	Chinook	Coho	Sockeye	Halibut
Weekend	71	8	568	0.1212				69			
Midweek	21	22	462	0.1379				64			

Recent years estimates of retained catch and effort

Year	Area	Month	Total Effort	Chinook Kept	Coho Kept	Sockeye Kept	Halibut Kept
2010	Area 18	June	488	124			
2011	Area 18	June	466	106			
2012	Area 18	June	676	101			16
2013	Area 18	June	1568	50			13
2014	Area 18	June	9	4			
2015	Area 18	June	993	216			
5-Yr Avg	Area 18	June	641	77			15

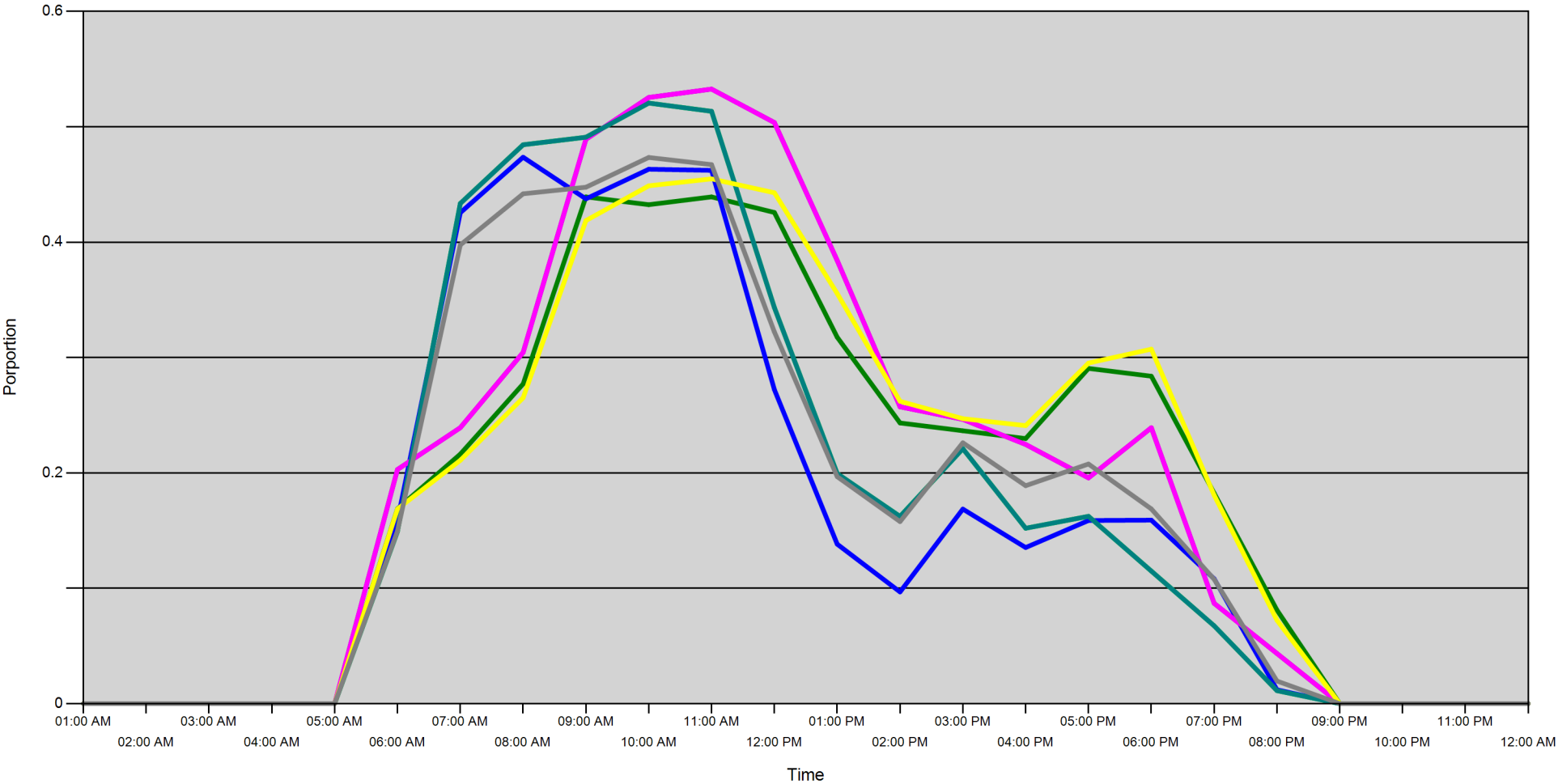
Sport Head Recovery Review

Year	Area	Month	Species	Creel Marked Catch	Creel Mark Rate	Creel Submission Rate	iRec Marked Catch	iRec Mark Rate	iRec Submission Rate	Sport Head recoveries
2015	Area 18	6	Chinook	102	47 %	7 %	0	0 %	1 %	7

Guided Proprtions Review

Data Source	Year	Month	Area	Interviews	Guided Proportion
Creel	2015	06	Area 18	55	2 %

Proportion of each day's fishing by hour



Area		01:00 AM	02:00 AM	03:00 AM	04:00 AM	05:00 AM	06:00 AM	07:00 AM	08:00 AM	09:00 AM	10:00 AM	11:00 AM	12:00 PM	01:00 PM	02:00 PM	03:00 PM	04:00 PM	05:00 PM	06:00 PM	07:00 PM	08:00 PM	09:00 PM	10:00 PM	11:00 PM	12:00 AM
18D	Midweek	0	0	0	0	0	0.169	0.216	0.277	0.439	0.432	0.439	0.426	0.318	0.243	0.236	0.23	0.291	0.284	0.182	0.081	0	0	0	0
	Weekend	0	0	0	0	0	0.159	0.425	0.474	0.437	0.463	0.462	0.272	0.138	0.097	0.169	0.135	0.159	0.159	0.108	0.012	0	0	0	0
18B	Midweek	0	0	0	0	0	0.203	0.239	0.304	0.489	0.525	0.533	0.504	0.384	0.257	0.246	0.225	0.196	0.239	0.087	0.043	0	0	0	0
	Weekend	0	0	0	0	0	0.149	0.433	0.484	0.491	0.521	0.513	0.343	0.199	0.162	0.221	0.152	0.162	0.115	0.067	0.011	0	0	0	0
18A	Midweek	0	0	0	0	0	0.203	0.239	0.304	0.489	0.525	0.533	0.504	0.384	0.257	0.246	0.225	0.196	0.239	0.087	0.043	0	0	0	0
	Weekend	0	0	0	0	0	0.149	0.433	0.484	0.491	0.521	0.513	0.343	0.199	0.162	0.221	0.152	0.162	0.115	0.067	0.011	0	0	0	0
18E	Midweek	0	0	0	0	0	0.169	0.211	0.265	0.419	0.449	0.455	0.443	0.355	0.262	0.247	0.241	0.295	0.307	0.181	0.072	0	0	0	0
	Weekend	0	0	0	0	0	0.15	0.398	0.442	0.448	0.473	0.467	0.322	0.197	0.158	0.226	0.189	0.208	0.169	0.108	0.02	0	0	0	0

Daily Fishing Conditions

		Cowichan Bay	Crofton Ramp	Sidney
29 May, 2015	Midweek			
30 May, 2015	Weekend	choppy		
31 May, 2015	Weekend			
01 June, 2015	Midweek			
02 June, 2015	Midweek			
03 June, 2015	Midweek			
04 June, 2015	Midweek			
05 June, 2015	Midweek			
06 June, 2015	Weekend			
07 June, 2015	Weekend		calm/rippled	
08 June, 2015	Midweek			
09 June, 2015	Midweek			
10 June, 2015	Midweek			choppy
11 June, 2015	Midweek			
12 June, 2015	Midweek			
13 June, 2015	Weekend			calm/rippled
14 June, 2015	Weekend	calm/rippled		
15 June, 2015	Midweek			
16 June, 2015	Midweek			
17 June, 2015	Midweek			
18 June, 2015	Midweek			
19 June, 2015	Midweek	calm/rippled		calm/rippled
20 June, 2015	Weekend			
21 June, 2015	Weekend	calm/rippled		
22 June, 2015	Midweek			
23 June, 2015	Midweek			
24 June, 2015	Midweek	calm/rippled		
25 June, 2015	Midweek			
26 June, 2015	Midweek			
27 June, 2015	Weekend			calm/rippled
28 June, 2015	Weekend			
29 June, 2015	Midweek			calm/rippled
30 June, 2015	Midweek			
01 July, 2015	Weekend			calm/rippled
02 July, 2015	Midweek			
03 July, 2015	Midweek			