

Numbers of Interviews conducted contributing to the area by day and access site

		Cattle Point	Cowichan Bay		Sidney	
		Evening	Evening	Morning	Evening	Morning
29 May, 2015	Midweek					
30 May, 2015	Weekend		3			
31 May, 2015	Weekend	1				
01 June, 2015	Midweek					
02 June, 2015	Midweek		1			
03 June, 2015	Midweek					
04 June, 2015	Midweek					
05 June, 2015	Midweek					
06 June, 2015	Weekend					
07 June, 2015	Weekend					
08 June, 2015	Midweek					
09 June, 2015	Midweek					
10 June, 2015	Midweek					13
11 June, 2015	Midweek					
12 June, 2015	Midweek					
13 June, 2015	Weekend					12
14 June, 2015	Weekend		2			
15 June, 2015	Midweek					
16 June, 2015	Midweek					
17 June, 2015	Midweek					
18 June, 2015	Midweek					
19 June, 2015	Midweek					3
20 June, 2015	Weekend					
21 June, 2015	Weekend			1		
22 June, 2015	Midweek					
23 June, 2015	Midweek					
24 June, 2015	Midweek					
25 June, 2015	Midweek					
26 June, 2015	Midweek	1				
27 June, 2015	Weekend				14	
28 June, 2015	Weekend					
29 June, 2015	Midweek				9	
30 June, 2015	Midweek					
01 July, 2015	Weekend					8
02 July, 2015	Midweek					
03 July, 2015	Midweek					

Daily tally of interviews, catch and effort

Date	Day	Day Type	Area	Average Fishing Conditions	Interviews & Log Trips	Chinook	Coho	Sockeye	Halibut	Observed Fishing	Flight Time	Expanded Fishing
29 May, 2015	Friday	Midweek	Area 19 (GS)		0							
30 May, 2015	Saturday	Weekend	Area 19 (GS)	choppy	4	3						
31 May, 2015	Sunday	Weekend	Area 19 (GS)	calm/rippled	1							
01 June, 2015	Monday	Midweek	Area 19 (GS)		0							
02 June, 2015	Tuesday	Midweek	Area 19 (GS)	calm/rippled	1					5	1014	9
03 June, 2015	Wednesday	Midweek	Area 19 (GS)		1	2						
04 June, 2015	Thursday	Midweek	Area 19 (GS)		1	1						
05 June, 2015	Friday	Midweek	Area 19 (GS)		0							
06 June, 2015	Saturday	Weekend	Area 19 (GS)		0							
07 June, 2015	Sunday	Weekend	Area 19 (GS)		0					19	0916	36
08 June, 2015	Monday	Midweek	Area 19 (GS)		1	1						
09 June, 2015	Tuesday	Midweek	Area 19 (GS)		0							
10 June, 2015	Wednesday	Midweek	Area 19 (GS)	choppy	13							
11 June, 2015	Thursday	Midweek	Area 19 (GS)		0					6	0918	11
12 June, 2015	Friday	Midweek	Area 19 (GS)		1							
13 June, 2015	Saturday	Weekend	Area 19 (GS)	calm/rippled	12	2						
14 June, 2015	Sunday	Weekend	Area 19 (GS)	calm/rippled	2					21	0933	40
15 June, 2015	Monday	Midweek	Area 19 (GS)		0					3	0914	6
16 June, 2015	Tuesday	Midweek	Area 19 (GS)		1	2						
17 June, 2015	Wednesday	Midweek	Area 19 (GS)		1							
18 June, 2015	Thursday	Midweek	Area 19 (GS)		0							
19 June, 2015	Friday	Midweek	Area 19 (GS)	calm/rippled	4							
20 June, 2015	Saturday	Weekend	Area 19 (GS)		0							
21 June, 2015	Sunday	Weekend	Area 19 (GS)	calm/rippled	2					25	0920	48
22 June, 2015	Monday	Midweek	Area 19 (GS)		1							
23 June, 2015	Tuesday	Midweek	Area 19 (GS)		0							
24 June, 2015	Wednesday	Midweek	Area 19 (GS)		0							
25 June, 2015	Thursday	Midweek	Area 19 (GS)		0							
26 June, 2015	Friday	Midweek	Area 19 (GS)	choppy	2	1						
27 June, 2015	Saturday	Weekend	Area 19 (GS)	calm/rippled	15	2				17	0920	32
28 June, 2015	Sunday	Weekend	Area 19 (GS)		0							
29 June, 2015	Monday	Midweek	Area 19 (GS)	calm/rippled	10	1						
30 June, 2015	Tuesday	Midweek	Area 19 (GS)		1					3	0915	8
01 July, 2015	Wednesday (Canada Day)	Weekend	Area 19 (GS)	calm/rippled	9							
02 July, 2015	Thursday	Midweek	Area 19 (GS)		0							
03 July, 2015	Friday	Midweek	Area 19 (GS)		2	2				10	0918	20
	Totals	Midweek	Area 19 (GS)	calm/rippled	38	8				4*		9*
	Totals	Weekend	Area 19 (GS)	calm/rippled	31	4				21*		39*

* Average number of boats observed and Expanded

Simple area based cpue (catch per boat trip) expansion

				CPUE				Retained			
Day Type	Average Expanded Boats	Number of Days	Total estimated Effort	Chinook	Coho	Sockeye	Halibut	Chinook	Coho	Sockeye	Halibut
Weekend	39	8	312	0.129				40			
Midweek	9	22	198	0.2105				42			

Recent years estimates of retained catch and effort

Year	Area	Month	Total Effort	Chinook Kept	Coho Kept	Sockeye Kept	Halibut Kept
2010	Area 19 (GS)	June	298	23			14
2011	Area 19 (GS)	June	467	136			
2012	Area 19 (GS)	June	203	14			14
2013	Area 19 (GS)	June	612	50			31
2014	Area 19 (GS)	June	490	15			5
2015	Area 19 (GS)	June	444	60			
5-Yr Avg	Area 19 (GS)	June	414	48			16

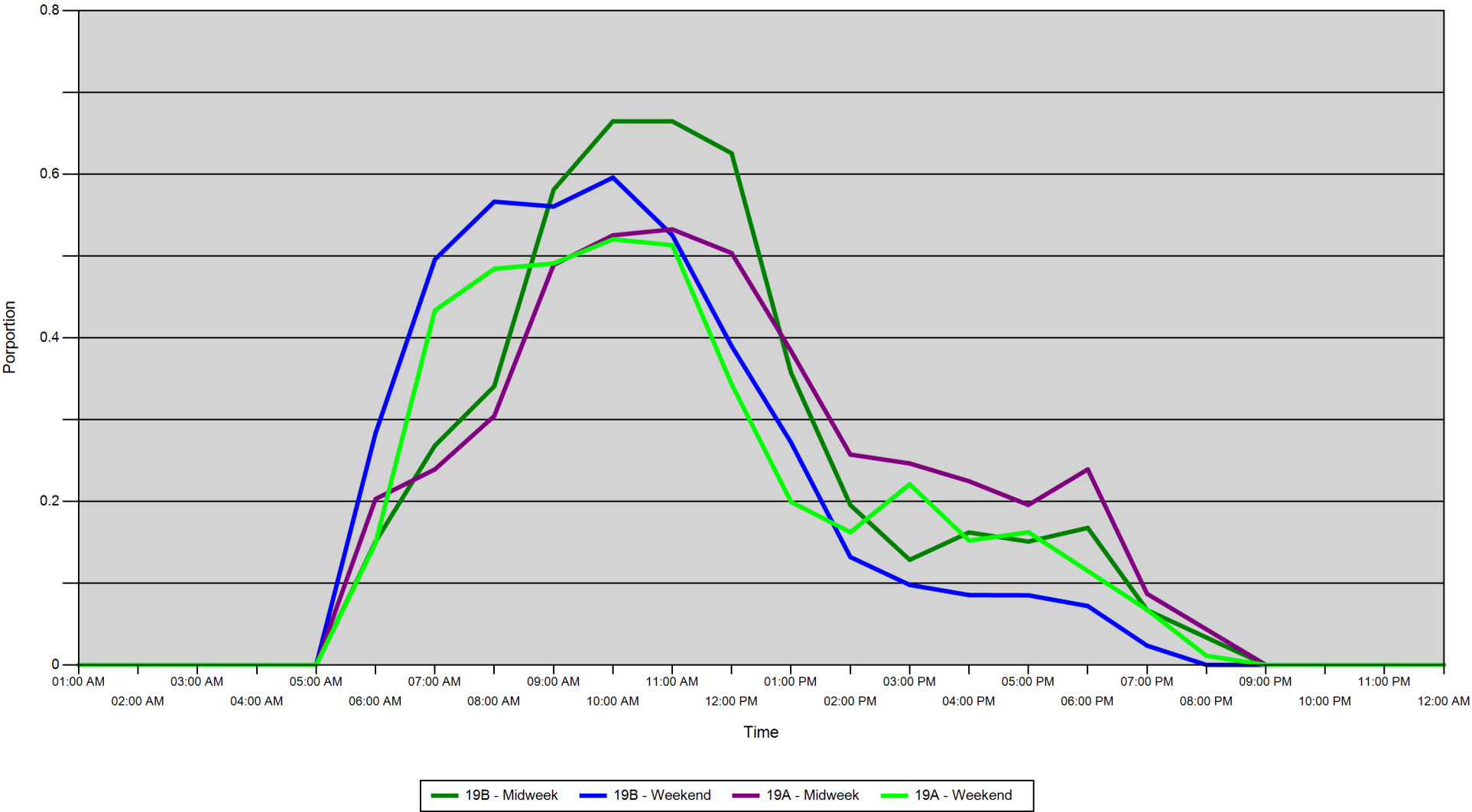
Sport Head Recovery Review

Year	Area	Month	Species	Creel Marked Catch	Creel Mark Rate	Creel Submission Rate	iRec Marked Catch	iRec Mark Rate	iRec Submission Rate	Sport Head recoveries
------	------	-------	---------	--------------------	-----------------	-----------------------	-------------------	----------------	----------------------	-----------------------

Guided Proprtions Review

Data Source	Year	Month	Area	Interviews	Guided Proportion
Creel	2015	06	Area 19 (GS)	56	0 %

Proportion of each day's fishing by hour



Area		01:00 AM	02:00 AM	03:00 AM	04:00 AM	05:00 AM	06:00 AM	07:00 AM	08:00 AM	09:00 AM	10:00 AM	11:00 AM	12:00 PM	01:00 PM	02:00 PM	03:00 PM	04:00 PM	05:00 PM	06:00 PM	07:00 PM	08:00 PM	09:00 PM	10:00 PM	11:00 PM	12:00 AM
19B	Midweek	0	0	0	0	0	0.151	0.268	0.341	0.581	0.665	0.665	0.626	0.358	0.196	0.128	0.162	0.151	0.168	0.067	0.034	0	0	0	0
	Weekend	0	0	0	0	0	0.283	0.496	0.566	0.561	0.596	0.526	0.39	0.272	0.132	0.098	0.085	0.085	0.072	0.024	0	0	0	0	0
19A	Midweek	0	0	0	0	0	0.203	0.239	0.304	0.489	0.525	0.533	0.504	0.384	0.257	0.246	0.225	0.196	0.239	0.087	0.043	0	0	0	0
	Weekend	0	0	0	0	0	0.149	0.433	0.484	0.491	0.521	0.513	0.343	0.199	0.162	0.221	0.152	0.162	0.115	0.067	0.011	0	0	0	0

Daily Fishing Conditions

		Cattle Point	Cowichan Bay	Sidney
29 May, 2015	Midweek			
30 May, 2015	Weekend		choppy	
31 May, 2015	Weekend	calm/rippled		
01 June, 2015	Midweek			
02 June, 2015	Midweek		calm/rippled	
03 June, 2015	Midweek			
04 June, 2015	Midweek			
05 June, 2015	Midweek			
06 June, 2015	Weekend			
07 June, 2015	Weekend			
08 June, 2015	Midweek			
09 June, 2015	Midweek			
10 June, 2015	Midweek			choppy
11 June, 2015	Midweek			
12 June, 2015	Midweek			
13 June, 2015	Weekend			calm/rippled
14 June, 2015	Weekend		calm/rippled	
15 June, 2015	Midweek			
16 June, 2015	Midweek			
17 June, 2015	Midweek			
18 June, 2015	Midweek			
19 June, 2015	Midweek			calm/rippled
20 June, 2015	Weekend			
21 June, 2015	Weekend		calm/rippled	
22 June, 2015	Midweek			
23 June, 2015	Midweek			
24 June, 2015	Midweek			
25 June, 2015	Midweek			
26 June, 2015	Midweek	choppy		
27 June, 2015	Weekend			calm/rippled
28 June, 2015	Weekend			
29 June, 2015	Midweek			calm/rippled
30 June, 2015	Midweek			
01 July, 2015	Weekend			calm/rippled
02 July, 2015	Midweek			
03 July, 2015	Midweek			