

Numbers of Interviews conducted contributing to the area by day and access site

		Cattle Point		Cheanuh	Flemming		Pedder Bay	
		Evening	Morning	Morning	Evening	Morning	Evening	Morning
29 May, 2015	Midweek							
30 May, 2015	Weekend					6		
31 May, 2015	Weekend	18						
01 June, 2015	Midweek							
02 June, 2015	Midweek							
03 June, 2015	Midweek							
04 June, 2015	Midweek							
05 June, 2015	Midweek							
06 June, 2015	Weekend							9
07 June, 2015	Weekend							
08 June, 2015	Midweek							
09 June, 2015	Midweek			2	7			
10 June, 2015	Midweek							
11 June, 2015	Midweek							
12 June, 2015	Midweek	4						
13 June, 2015	Weekend							
14 June, 2015	Weekend				22		6	
15 June, 2015	Midweek							
16 June, 2015	Midweek							
17 June, 2015	Midweek							
18 June, 2015	Midweek							
19 June, 2015	Midweek							
20 June, 2015	Weekend		20					4
21 June, 2015	Weekend							
22 June, 2015	Midweek							
23 June, 2015	Midweek							
24 June, 2015	Midweek							
25 June, 2015	Midweek					11		
26 June, 2015	Midweek	7						
27 June, 2015	Weekend							
28 June, 2015	Weekend					25		
29 June, 2015	Midweek							
30 June, 2015	Midweek							1
01 July, 2015	Weekend							
02 July, 2015	Midweek							
03 July, 2015	Midweek							

Daily tally of interviews, catch and effort

Date	Day	Day Type	Area	Average Fishing Conditions	Interviews & Log Trips	Chinook	Coho	Sockeye	Halibut	Observed Fishing	Flight Time	Expanded Fishing
29 May, 2015	Friday	Midweek	Area 19 (JDF)		0							
30 May, 2015	Saturday	Weekend	Area 19 (JDF)	choppy	7	5						
31 May, 2015	Sunday	Weekend	Area 19 (JDF)	calm/rippled	18	20						
01 June, 2015	Monday	Midweek	Area 19 (JDF)		0							
02 June, 2015	Tuesday	Midweek	Area 19 (JDF)		0					9	0949	13
03 June, 2015	Wednesday	Midweek	Area 19 (JDF)		0							
04 June, 2015	Thursday	Midweek	Area 19 (JDF)		0							
05 June, 2015	Friday	Midweek	Area 19 (JDF)		0							
06 June, 2015	Saturday	Weekend	Area 19 (JDF)	choppy	9				1			
07 June, 2015	Sunday	Weekend	Area 19 (JDF)		0					84	0924	134
08 June, 2015	Monday	Midweek	Area 19 (JDF)		0							
09 June, 2015	Tuesday	Midweek	Area 19 (JDF)	choppy	9	5			3			
10 June, 2015	Wednesday	Midweek	Area 19 (JDF)		0							
11 June, 2015	Thursday	Midweek	Area 19 (JDF)		0					13	0926	19
12 June, 2015	Friday	Midweek	Area 19 (JDF)	choppy	4							
13 June, 2015	Saturday	Weekend	Area 19 (JDF)		0							
14 June, 2015	Sunday	Weekend	Area 19 (JDF)	choppy	28	13			2	65	0941	104
15 June, 2015	Monday	Midweek	Area 19 (JDF)		0					25	0916	36
16 June, 2015	Tuesday	Midweek	Area 19 (JDF)		0							
17 June, 2015	Wednesday	Midweek	Area 19 (JDF)		0							
18 June, 2015	Thursday	Midweek	Area 19 (JDF)		0							
19 June, 2015	Friday	Midweek	Area 19 (JDF)		0							
20 June, 2015	Saturday	Weekend	Area 19 (JDF)	calm/rippled	24	7						
21 June, 2015	Sunday	Weekend	Area 19 (JDF)		0					87	0929	139
22 June, 2015	Monday	Midweek	Area 19 (JDF)		0							
23 June, 2015	Tuesday	Midweek	Area 19 (JDF)		0							
24 June, 2015	Wednesday	Midweek	Area 19 (JDF)		0							
25 June, 2015	Thursday	Midweek	Area 19 (JDF)	calm/rippled	11	7						
26 June, 2015	Friday	Midweek	Area 19 (JDF)	choppy	7							
27 June, 2015	Saturday	Weekend	Area 19 (JDF)		0					86	0928	138
28 June, 2015	Sunday	Weekend	Area 19 (JDF)	calm/rippled	25	7						
29 June, 2015	Monday	Midweek	Area 19 (JDF)		0							
30 June, 2015	Tuesday	Midweek	Area 19 (JDF)	frequent whitecaps	1					17	0924	24
01 July, 2015	Wednesday (Canada Day)	Weekend	Area 19 (JDF)		0							
02 July, 2015	Thursday	Midweek	Area 19 (JDF)		0							
03 July, 2015	Friday	Midweek	Area 19 (JDF)		0					47	0927	68
	Totals	Midweek	Area 19 (JDF)	choppy	32	12			3	16*		23*
	Totals	Weekend	Area 19 (JDF)	choppy	86	27			3	81*		129*

* Average number of boats observed and Expanded

Simple area based cpue (catch per boat trip) expansion

				CPUE				Retained			
Day Type	Average Expanded Boats	Number of Days	Total estimated Effort	Chinook	Coho	Sockeye	Halibut	Chinook	Coho	Sockeye	Halibut
Midweek	23	22	506	0.375			0.0938	190			47
Weekend	129	8	1032	0.314			0.0349	324			36

Recent years estimates of retained catch and effort

Year	Area	Month	Total Effort	Chinook Kept	Coho Kept	Sockeye Kept	Halibut Kept
2010	Area 19 (JDF)	June	1846	217			793
2011	Area 19 (JDF)	June	903	269			112
2012	Area 19 (JDF)	June	1338	180	7		451
2013	Area 19 (JDF)	June	2240	597	89		1019
2014	Area 19 (JDF)	June	1656	264			684
2015	Area 19 (JDF)	June	1555	425			68
5-Yr Avg	Area 19 (JDF)	June	1597	305	48		612

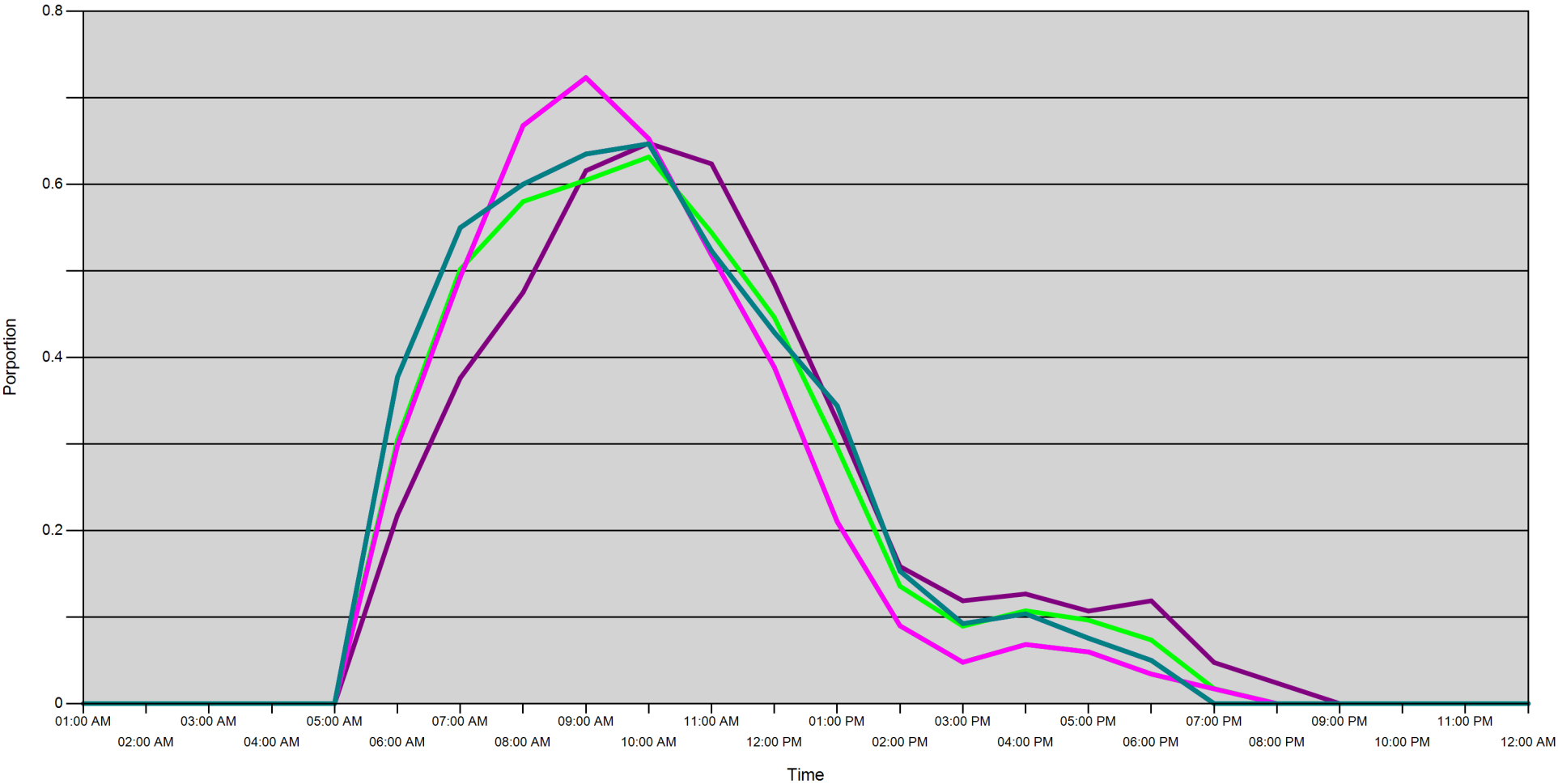
Sport Head Recovery Review

Year	Area	Month	Species	Creel Marked Catch	Creel Mark Rate	Creel Submission Rate	iRec Marked Catch	iRec Mark Rate	iRec Submission Rate	Sport Head recoveries
2015	Area 19 (JDF)	6	Coho			1 %			1 %	2
2015	Area 19 (JDF)	6	Chinook	225	55 %	50 %	1261	60 %	9 %	113

Guided Proprtions Review

Data Source	Year	Month	Area	Interviews	Guided Proportion
Creel	2015	06	Area 19 (JDF)	118	2 %

Proportion of each day's fishing by hour



Area		01:00 AM	02:00 AM	03:00 AM	04:00 AM	05:00 AM	06:00 AM	07:00 AM	08:00 AM	09:00 AM	10:00 AM	11:00 AM	12:00 PM	01:00 PM	02:00 PM	03:00 PM	04:00 PM	05:00 PM	06:00 PM	07:00 PM	08:00 PM	09:00 PM	10:00 PM	11:00 PM	12:00 AM
19D	Midweek	0	0	0	0	0	0.298	0.493	0.668	0.723	0.653	0.518	0.389	0.21	0.09	0.048	0.068	0.06	0.034	0.017	0	0	0	0	0
	Weekend	0	0	0	0	0	0.377	0.55	0.6	0.635	0.647	0.523	0.429	0.344	0.153	0.092	0.104	0.076	0.05	0	0	0	0	0	0
19C	Midweek	0	0	0	0	0	0.218	0.376	0.475	0.616	0.648	0.624	0.485	0.327	0.158	0.119	0.127	0.107	0.119	0.048	0.024	0	0	0	0
	Weekend	0	0	0	0	0	0.305	0.502	0.58	0.605	0.632	0.544	0.446	0.296	0.136	0.09	0.107	0.096	0.074	0.017	0	0	0	0	0
19E	Midweek	0	0	0	0	0	0.298	0.493	0.668	0.723	0.653	0.518	0.389	0.21	0.09	0.048	0.068	0.06	0.034	0.017	0	0	0	0	0
	Weekend	0	0	0	0	0	0.377	0.55	0.6	0.635	0.647	0.523	0.429	0.344	0.153	0.092	0.104	0.076	0.05	0	0	0	0	0	0

Daily Fishing Conditions

		Cattle Point	Cheanuh	Flemming	Pedder Bay
29 May, 2015	Midweek				
30 May, 2015	Weekend			choppy	
31 May, 2015	Weekend	calm/rippled			
01 June, 2015	Midweek				
02 June, 2015	Midweek				
03 June, 2015	Midweek				
04 June, 2015	Midweek				
05 June, 2015	Midweek				
06 June, 2015	Weekend				choppy
07 June, 2015	Weekend				
08 June, 2015	Midweek				
09 June, 2015	Midweek		choppy	choppy	
10 June, 2015	Midweek				
11 June, 2015	Midweek				
12 June, 2015	Midweek	choppy			
13 June, 2015	Weekend				
14 June, 2015	Weekend			choppy	calm/rippled
15 June, 2015	Midweek				
16 June, 2015	Midweek				
17 June, 2015	Midweek				
18 June, 2015	Midweek				
19 June, 2015	Midweek				
20 June, 2015	Weekend	calm/rippled			choppy
21 June, 2015	Weekend				
22 June, 2015	Midweek				
23 June, 2015	Midweek				
24 June, 2015	Midweek				
25 June, 2015	Midweek			calm/rippled	
26 June, 2015	Midweek	choppy			
27 June, 2015	Weekend				
28 June, 2015	Weekend			calm/rippled	
29 June, 2015	Midweek				
30 June, 2015	Midweek				frequent whitecaps
01 July, 2015	Weekend				
02 July, 2015	Midweek				
03 July, 2015	Midweek				