

Numbers of Interviews conducted contributing to the area by day and access site

		Cattle Point	Flemming		Pedder Bay		
		Mid Day	Evening	Mid Day	Evening	Mid Day	Morning
27 February, 2016	Weekend						
28 February, 2016	Weekend						
29 February, 2016	Midweek						
01 March, 2016	Midweek						
02 March, 2016	Midweek						
03 March, 2016	Midweek					7	
04 March, 2016	Midweek						
05 March, 2016	Weekend			31			
06 March, 2016	Weekend						
07 March, 2016	Midweek						
08 March, 2016	Midweek						
09 March, 2016	Midweek						
10 March, 2016	Midweek						
11 March, 2016	Midweek						
12 March, 2016	Weekend					1	
13 March, 2016	Weekend						
14 March, 2016	Midweek						
15 March, 2016	Midweek						
16 March, 2016	Midweek			40			
17 March, 2016	Midweek					4	
18 March, 2016	Midweek						
19 March, 2016	Weekend			69			
20 March, 2016	Weekend					16	
21 March, 2016	Midweek						
22 March, 2016	Midweek						
23 March, 2016	Midweek						
24 March, 2016	Midweek						
25 March, 2016	Weekend					15	
26 March, 2016	Weekend	18					
27 March, 2016	Weekend						
28 March, 2016	Midweek						
29 March, 2016	Midweek					11	
30 March, 2016	Midweek						
31 March, 2016	Midweek						
01 April, 2016	Midweek						10
02 April, 2016	Weekend		4				
03 April, 2016	Weekend				31		

Daily tally of interviews, catch and effort

Date	Day	Day Type	Area	Average Fishing Conditions	Interviews & Log Trips	Chinook	Coho	Sockeye	Halibut	Observed Fishing	Flight Time	Expanded Fishing
27 February, 2016	Saturday	Weekend	Area 19 (JDF)		0							
28 February, 2016	Sunday	Weekend	Area 19 (JDF)		0							
29 February, 2016	Monday	Midweek	Area 19 (JDF)		0							
01 March, 2016	Tuesday	Midweek	Area 19 (JDF)		0							
02 March, 2016	Wednesday	Midweek	Area 19 (JDF)		0					10	1136	11
03 March, 2016	Thursday	Midweek	Area 19 (JDF)	calm/rippled	7				5			
04 March, 2016	Friday	Midweek	Area 19 (JDF)		0							
05 March, 2016	Saturday	Weekend	Area 19 (JDF)	choppy	31	11			14	91	1131	108
06 March, 2016	Sunday	Weekend	Area 19 (JDF)		0							
07 March, 2016	Monday	Midweek	Area 19 (JDF)		0							
08 March, 2016	Tuesday	Midweek	Area 19 (JDF)		0							
09 March, 2016	Wednesday	Midweek	Area 19 (JDF)		0					1	1129	1
10 March, 2016	Thursday	Midweek	Area 19 (JDF)		0							
11 March, 2016	Friday	Midweek	Area 19 (JDF)		0							
12 March, 2016	Saturday	Weekend	Area 19 (JDF)	choppy	1	3						
13 March, 2016	Sunday	Weekend	Area 19 (JDF)		0							
14 March, 2016	Monday	Midweek	Area 19 (JDF)		0					1	1122	1
15 March, 2016	Tuesday	Midweek	Area 19 (JDF)		0							
16 March, 2016	Wednesday	Midweek	Area 19 (JDF)	choppy	40	7			10			
17 March, 2016	Thursday	Midweek	Area 19 (JDF)	frequent whitecaps	4				6			
18 March, 2016	Friday	Midweek	Area 19 (JDF)		0							
19 March, 2016	Saturday	Weekend	Area 19 (JDF)	calm/rippled	69	16			44	147	1130	176
20 March, 2016	Sunday	Weekend	Area 19 (JDF)	calm/rippled	16				13	73	1130	87
21 March, 2016	Monday	Midweek	Area 19 (JDF)		0							
22 March, 2016	Tuesday	Midweek	Area 19 (JDF)		0							
23 March, 2016	Wednesday	Midweek	Area 19 (JDF)		0							
24 March, 2016	Thursday	Midweek	Area 19 (JDF)		0							
25 March, 2016	Friday (Good Friday)	Weekend	Area 19 (JDF)	calm/rippled	16	6			9			
26 March, 2016	Saturday	Weekend	Area 19 (JDF)	calm/rippled	18				1			
27 March, 2016	Sunday	Weekend	Area 19 (JDF)		0							
28 March, 2016	Monday	Midweek	Area 19 (JDF)		0							
29 March, 2016	Tuesday	Midweek	Area 19 (JDF)	choppy	12	11			2			
30 March, 2016	Wednesday	Midweek	Area 19 (JDF)		0							
31 March, 2016	Thursday	Midweek	Area 19 (JDF)		0							
01 April, 2016	Friday	Midweek	Area 19 (JDF)	frequent whitecaps	10				2			
02 April, 2016	Saturday	Weekend	Area 19 (JDF)	frequent whitecaps	4				3	45	1034	59
03 April, 2016	Sunday	Weekend	Area 19 (JDF)	calm/rippled	31				21			
	Totals	Midweek	Area 19 (JDF)	choppy	63	18			23	4*		4*
	Totals	Weekend	Area 19 (JDF)	calm/rippled	151	36			81	104*		124*

\* Average number of boats observed and Expanded

Simple area based cpue (catch per boat trip) expansion

				CPUE				Retained			
Day Type	Average Expanded Boats	Number of Days	Total estimated Effort	Chinook	Coho	Sockeye	Halibut	Chinook	Coho	Sockeye	Halibut
Weekend	124	9	1116	0.2384			0.5364	266			599
Midweek	4	22	88	0.2857			0.3651	25			32

Recent years estimates of retained catch and effort

Year	Area	Month	Total Effort	Chinook Kept	Coho Kept	Sockeye Kept	Halibut Kept
2011	Area 19 (JDF)	March	624	118			147
2012	Area 19 (JDF)	March	1293	94			569
2013	Area 19 (JDF)	March	1550	198			929
2014	Area 19 (JDF)	March	806	182			456
2015	Area 19 (JDF)	March	1445	63			742
2016	Area 19 (JDF)	March	1244	279			720
5-Yr Avg	Area 19 (JDF)	March	1144	131			569

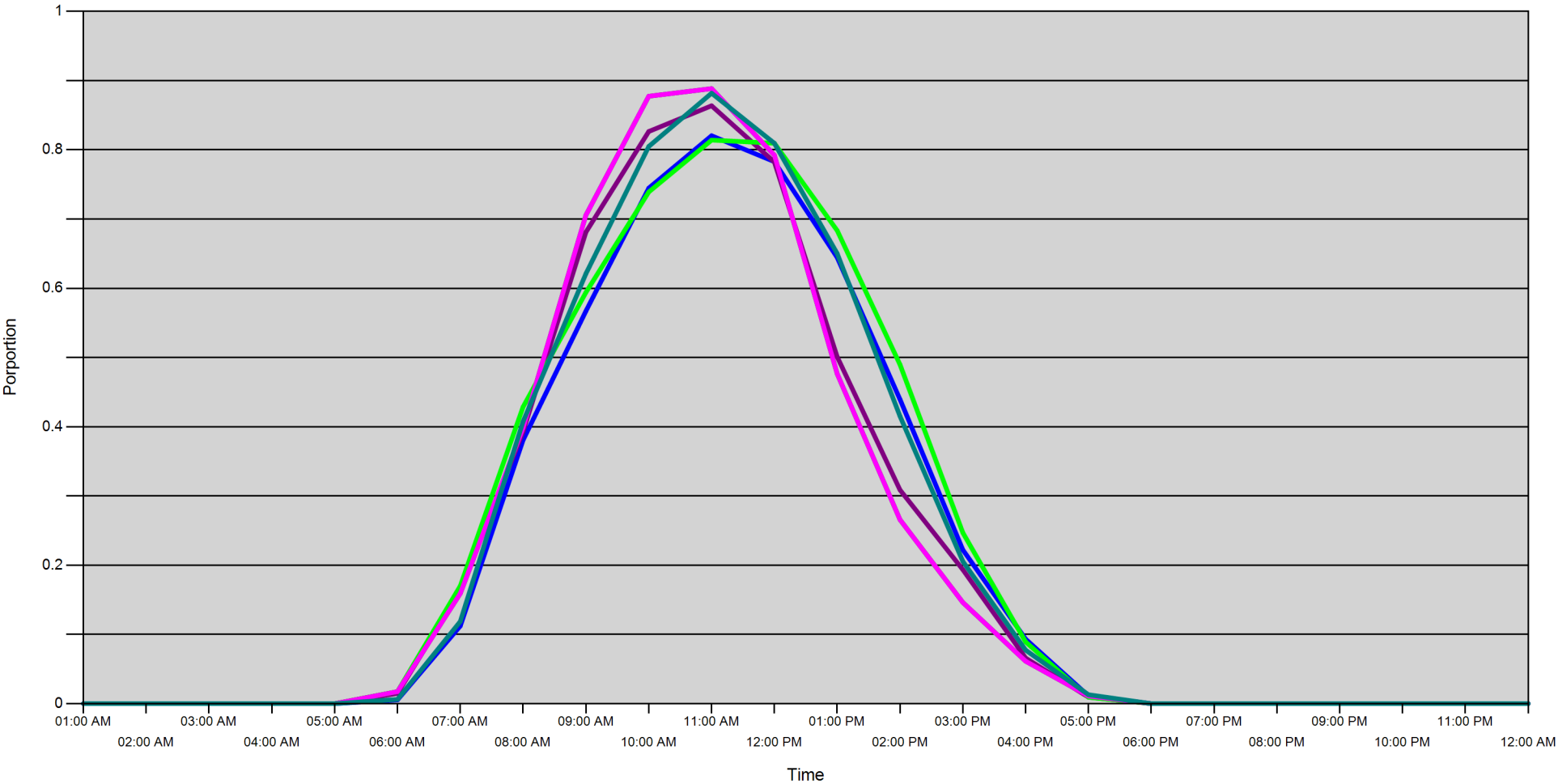
Sport Head Recovery Review

Year	Area	Month	Species	Creel Marked Catch	Creel Mark Rate	Creel Submission Rate	iRec Marked Catch	iRec Mark Rate	iRec Submission Rate	Sport Head recoveries
2016	Area 19 (JDF)	3	Chinook	230	82 %	11 %	277	65 %	9 %	26

Guided Proprtions Review

Data Source	Year	Month	Area	Interviews	Guided Proportion
Creel	2016	03	Area 19 (JDF)	212	4 %
iRec	2016	03	Area 19 (JDF)	85	2 %

Proportion of each day's fishing by hour



Area		01:00 AM	02:00 AM	03:00 AM	04:00 AM	05:00 AM	06:00 AM	07:00 AM	08:00 AM	09:00 AM	10:00 AM	11:00 AM	12:00 PM	01:00 PM	02:00 PM	03:00 PM	04:00 PM	05:00 PM	06:00 PM	07:00 PM	08:00 PM	09:00 PM	10:00 PM	11:00 PM	12:00 AM
19D	Midweek	0	0	0	0	0	0.017	0.159	0.399	0.706	0.877	0.888	0.792	0.476	0.266	0.146	0.061	0.011	0	0	0	0	0	0	0
	Weekend	0	0	0	0	0	0.005	0.112	0.381	0.567	0.745	0.82	0.783	0.644	0.439	0.222	0.093	0.011	0	0	0	0	0	0	0
19C	Midweek	0	0	0	0	0	0.015	0.163	0.393	0.681	0.826	0.864	0.782	0.501	0.309	0.193	0.066	0.009	0	0	0	0	0	0	0
	Weekend	0	0	0	0	0	0.017	0.17	0.429	0.594	0.739	0.814	0.81	0.683	0.49	0.247	0.089	0.009	0	0	0	0	0	0	0
19E	Midweek	0	0	0	0	0	0.017	0.159	0.399	0.706	0.877	0.888	0.792	0.476	0.266	0.146	0.061	0.011	0	0	0	0	0	0	0
	Weekend	0	0	0	0	0	0.006	0.119	0.408	0.621	0.805	0.882	0.809	0.65	0.415	0.205	0.077	0.013	0	0	0	0	0	0	0

Daily Fishing Conditions

		Cattle Point	Flemming	Pedder Bay
27 February, 2016	Weekend			
28 February, 2016	Weekend			
29 February, 2016	Midweek			
01 March, 2016	Midweek			
02 March, 2016	Midweek			
03 March, 2016	Midweek			calm/rippled
04 March, 2016	Midweek			
05 March, 2016	Weekend		choppy	
06 March, 2016	Weekend			
07 March, 2016	Midweek			
08 March, 2016	Midweek			
09 March, 2016	Midweek			
10 March, 2016	Midweek			
11 March, 2016	Midweek			
12 March, 2016	Weekend			choppy
13 March, 2016	Weekend			
14 March, 2016	Midweek			
15 March, 2016	Midweek			
16 March, 2016	Midweek		choppy	
17 March, 2016	Midweek			frequent whitecaps
18 March, 2016	Midweek			
19 March, 2016	Weekend		calm/rippled	
20 March, 2016	Weekend			calm/rippled
21 March, 2016	Midweek			
22 March, 2016	Midweek			
23 March, 2016	Midweek			
24 March, 2016	Midweek			
25 March, 2016	Weekend			calm/rippled
26 March, 2016	Weekend	calm/rippled		
27 March, 2016	Weekend			
28 March, 2016	Midweek			
29 March, 2016	Midweek			choppy
30 March, 2016	Midweek			
31 March, 2016	Midweek			
01 April, 2016	Midweek			frequent whitecaps
02 April, 2016	Weekend		frequent whitecaps	
03 April, 2016	Weekend			calm/rippled