

Numbers of Interviews conducted contributing to the area by day and access site

		Cattle Point	Cowichan Bay	Sidney	
		Evening	Morning	Evening	Morning
28 April, 2016	Midweek			8	
29 April, 2016	Midweek				
30 April, 2016	Weekend				10
01 May, 2016	Weekend	3			
02 May, 2016	Midweek				
03 May, 2016	Midweek				
04 May, 2016	Midweek				
05 May, 2016	Midweek				
06 May, 2016	Midweek			10	
07 May, 2016	Weekend				
08 May, 2016	Weekend				
09 May, 2016	Midweek				
10 May, 2016	Midweek				
11 May, 2016	Midweek				
12 May, 2016	Midweek				
13 May, 2016	Midweek				
14 May, 2016	Weekend				14
15 May, 2016	Weekend				
16 May, 2016	Midweek				
17 May, 2016	Midweek				
18 May, 2016	Midweek				1
19 May, 2016	Midweek				
20 May, 2016	Midweek				
21 May, 2016	Weekend				
22 May, 2016	Weekend		2		
23 May, 2016	Weekend				
24 May, 2016	Midweek				
25 May, 2016	Midweek				
26 May, 2016	Midweek				
27 May, 2016	Midweek				
28 May, 2016	Weekend				
29 May, 2016	Weekend			14	
30 May, 2016	Midweek				
31 May, 2016	Midweek				
01 June, 2016	Midweek				
02 June, 2016	Midweek				
03 June, 2016	Midweek				

Daily tally of interviews, catch and effort

Date	Day	Day Type	Area	Average Fishing Conditions	Interviews & Log Trips	Chinook	Coho	Sockeye	Halibut	Observed Fishing	Flight Time	Expanded Fishing
28 April, 2016	Thursday	Midweek	Area 19 (GS)	choppy	8	4						
29 April, 2016	Friday	Midweek	Area 19 (GS)		0							
30 April, 2016	Saturday	Weekend	Area 19 (GS)	calm/rippled	10	1				45	1042	71
01 May, 2016	Sunday	Weekend	Area 19 (GS)	calm/rippled	3					29	1006	46
02 May, 2016	Monday	Midweek	Area 19 (GS)		0							
03 May, 2016	Tuesday	Midweek	Area 19 (GS)		0							
04 May, 2016	Wednesday	Midweek	Area 19 (GS)		0							
05 May, 2016	Thursday	Midweek	Area 19 (GS)		0							
06 May, 2016	Friday	Midweek	Area 19 (GS)	calm/rippled	10	1						
07 May, 2016	Saturday	Weekend	Area 19 (GS)		4	5						
08 May, 2016	Sunday	Weekend	Area 19 (GS)		0							
09 May, 2016	Monday	Midweek	Area 19 (GS)		0					2	0944	7
10 May, 2016	Tuesday	Midweek	Area 19 (GS)		0							
11 May, 2016	Wednesday	Midweek	Area 19 (GS)		0							
12 May, 2016	Thursday	Midweek	Area 19 (GS)		0							
13 May, 2016	Friday	Midweek	Area 19 (GS)		0							
14 May, 2016	Saturday	Weekend	Area 19 (GS)	calm/rippled	14	1						
15 May, 2016	Sunday	Weekend	Area 19 (GS)		1					21	0943	34
16 May, 2016	Monday	Midweek	Area 19 (GS)		0							
17 May, 2016	Tuesday	Midweek	Area 19 (GS)		0							
18 May, 2016	Wednesday	Midweek	Area 19 (GS)	calm/rippled	1					3	0940	9
19 May, 2016	Thursday	Midweek	Area 19 (GS)		0							
20 May, 2016	Friday	Midweek	Area 19 (GS)		0							
21 May, 2016	Saturday	Weekend	Area 19 (GS)		0							
22 May, 2016	Sunday	Weekend	Area 19 (GS)	choppy	2					8	0945	13
23 May, 2016	Monday (Victoria Day)	Weekend	Area 19 (GS)		0							
24 May, 2016	Tuesday	Midweek	Area 19 (GS)		0							
25 May, 2016	Wednesday	Midweek	Area 19 (GS)		0							
26 May, 2016	Thursday	Midweek	Area 19 (GS)		0							
27 May, 2016	Friday	Midweek	Area 19 (GS)		0							
28 May, 2016	Saturday	Weekend	Area 19 (GS)		0							
29 May, 2016	Sunday	Weekend	Area 19 (GS)	calm/rippled	14							
30 May, 2016	Monday	Midweek	Area 19 (GS)		0					9	0942	25
31 May, 2016	Tuesday	Midweek	Area 19 (GS)		0							
01 June, 2016	Wednesday	Midweek	Area 19 (GS)		0					7	0924	25
02 June, 2016	Thursday	Midweek	Area 19 (GS)		0							
03 June, 2016	Friday	Midweek	Area 19 (GS)		0							
	Totals	Midweek	Area 19 (GS)	calm/rippled	11	1				5*		14*
	Totals	Weekend	Area 19 (GS)	calm/rippled	38	6				19*		31*

* Average number of boats observed and Expanded

Simple area based cpue (catch per boat trip) expansion

				CPUE				Retained			
Day Type	Average Expanded Boats	Number of Days	Total estimated Effort	Chinook	Coho	Sockeye	Halibut	Chinook	Coho	Sockeye	Halibut
Midweek	14	21	294	0.0909				27			
Weekend	31	10	310	0.1579				49			

Recent years estimates of retained catch and effort

Year	Area	Month	Total Effort	Chinook Kept	Coho Kept	Sockeye Kept	Halibut Kept
2011	Area 19 (GS)	May	507	25			69
2012	Area 19 (GS)	May	633	75			36
2013	Area 19 (GS)	May	372	49			27
2014	Area 19 (GS)	May	485				77
2015	Area 19 (GS)	May	583	40			65
2016	Area 19 (GS)	May	547	37			
5-Yr Avg	Area 19 (GS)	May	516	47			55

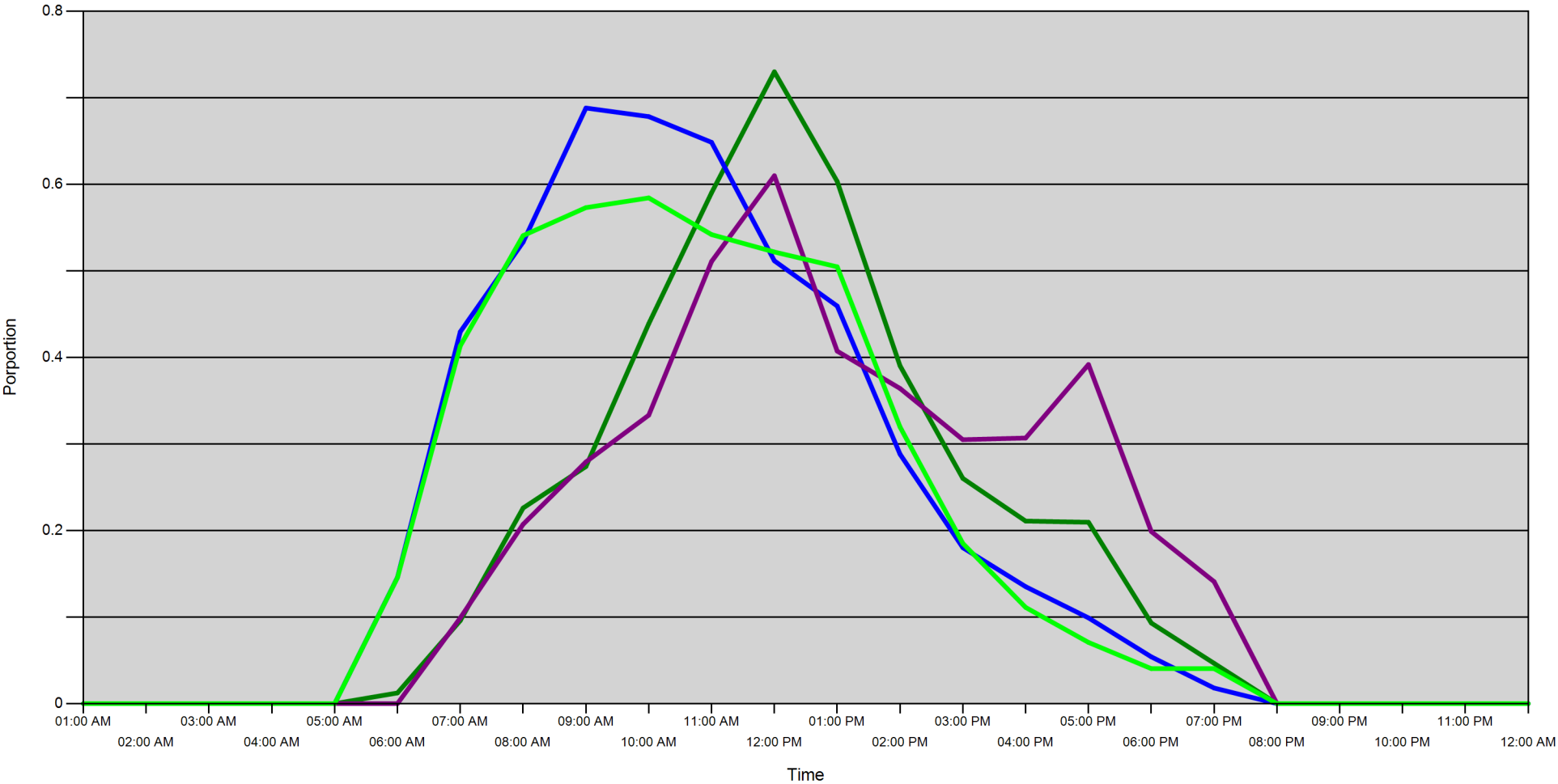
Sport Head Recovery Review

Year	Area	Month	Species	Creel Marked Catch	Creel Mark Rate	Creel Submission Rate	iRec Marked Catch	iRec Mark Rate	iRec Submission Rate	Sport Head recoveries
2016	Area 19 (GS)	5	Chinook	12	32 %	8 %	0	0 %	1 %	1

Guided Proprtions Review

Data Source	Year	Month	Area	Interviews	Guided Proportion
Creel	2016	05	Area 19 (GS)	48	1 %
iRec	2016	05	Area 19 (GS)	12	0 %

Proportion of each day's fishing by hour



Area		01:00 AM	02:00 AM	03:00 AM	04:00 AM	05:00 AM	06:00 AM	07:00 AM	08:00 AM	09:00 AM	10:00 AM	11:00 AM	12:00 PM	01:00 PM	02:00 PM	03:00 PM	04:00 PM	05:00 PM	06:00 PM	07:00 PM	08:00 PM	09:00 PM	10:00 PM	11:00 PM	12:00 AM
19B	Midweek	0	0	0	0	0	0.012	0.096	0.226	0.274	0.439	0.59	0.73	0.603	0.39	0.26	0.211	0.21	0.093	0.047	0	0	0	0	0
	Weekend	0	0	0	0	0	0.146	0.43	0.533	0.688	0.678	0.649	0.512	0.459	0.288	0.18	0.135	0.099	0.054	0.018	0	0	0	0	0
19A	Midweek	0	0	0	0	0	0	0.099	0.207	0.279	0.333	0.511	0.61	0.407	0.364	0.305	0.307	0.392	0.199	0.141	0	0	0	0	0
	Weekend	0	0	0	0	0	0.146	0.413	0.541	0.573	0.584	0.542	0.522	0.505	0.32	0.185	0.111	0.071	0.04	0.04	0	0	0	0	0

Daily Fishing Conditions

		Cattle Point	Cowichan Bay	Sidney
28 April, 2016	Midweek			choppy
29 April, 2016	Midweek			
30 April, 2016	Weekend			calm/rippled
01 May, 2016	Weekend	calm/rippled		
02 May, 2016	Midweek			
03 May, 2016	Midweek			
04 May, 2016	Midweek			
05 May, 2016	Midweek			
06 May, 2016	Midweek			calm/rippled
07 May, 2016	Weekend			
08 May, 2016	Weekend			
09 May, 2016	Midweek			
10 May, 2016	Midweek			
11 May, 2016	Midweek			
12 May, 2016	Midweek			
13 May, 2016	Midweek			
14 May, 2016	Weekend			calm/rippled
15 May, 2016	Weekend			
16 May, 2016	Midweek			
17 May, 2016	Midweek			
18 May, 2016	Midweek			calm/rippled
19 May, 2016	Midweek			
20 May, 2016	Midweek			
21 May, 2016	Weekend			
22 May, 2016	Weekend		choppy	
23 May, 2016	Weekend			
24 May, 2016	Midweek			
25 May, 2016	Midweek			
26 May, 2016	Midweek			
27 May, 2016	Midweek			
28 May, 2016	Weekend			
29 May, 2016	Weekend			calm/rippled
30 May, 2016	Midweek			
31 May, 2016	Midweek			
01 June, 2016	Midweek			
02 June, 2016	Midweek			
03 June, 2016	Midweek			