

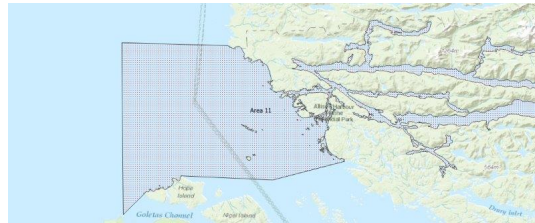
# FISHERIES AND OCEANS CANADA

## SOUTH COAST ASSESSMENT BULLETIN

### CREEL SURVEY DATA REVIEW PACKAGE

---

## Area 11 June 2016



---

*Prepared By:*

South Coast Salmon Stock Assessment Section

Thursday 17<sup>th</sup> June, 2021



Fisheries and Oceans  
Canada

Pêches et Océans  
Canada

**your  
catch  
counts**

**Table 1: Numbers of Interviews conducted contributing to the area by day and access site.**

Date	Day Type	Bear Cove		Quarterdeck Marina	
		AM	PM	AM	PM
29 May 2016	Weekend				
30 May 2016	Midweek				
31 May 2016	Midweek				
01 Jun 2016	Midweek				
02 Jun 2016	Midweek				
03 Jun 2016	Midweek				2
04 Jun 2016	Weekend				6
05 Jun 2016	Weekend			1	
06 Jun 2016	Midweek				
07 Jun 2016	Midweek				
08 Jun 2016	Midweek				
09 Jun 2016	Midweek				
10 Jun 2016	Midweek				
11 Jun 2016	Weekend		3		
12 Jun 2016	Weekend				5
13 Jun 2016	Midweek				7
14 Jun 2016	Midweek			5	
15 Jun 2016	Midweek				
16 Jun 2016	Midweek				
17 Jun 2016	Midweek	1	16		
18 Jun 2016	Weekend	1	8		
19 Jun 2016	Weekend	5			
20 Jun 2016	Midweek			7	
21 Jun 2016	Midweek				4
22 Jun 2016	Midweek				
23 Jun 2016	Midweek				
24 Jun 2016	Midweek			11	
25 Jun 2016	Weekend			6	
26 Jun 2016	Weekend				11
27 Jun 2016	Midweek				
28 Jun 2016	Midweek	1		8	
29 Jun 2016	Midweek		2		
30 Jun 2016	Midweek				
01 Jul 2016	Weekend				
02 Jul 2016	Weekend	16			
03 Jul 2016	Weekend			2	

Table 2: Daily tally of interviews, catch and effort.

Date	Day	Average Fishing Conditions	Interviews & Log Trips	Chinook	Coho	Sockeye	Halibut	Observed Fishing	Flight Time	Expanded Fishing
29-May-2016	Sunday		3	8			3			
30-May-2016	Monday		1	4						
31-May-2016	Tuesday		1	6						
01-Jun-2016	Wednesday		0							
02-Jun-2016	Thursday		0							
03-Jun-2016	Friday	calm/rippled	2	2			5			
04-Jun-2016	Saturday	calm/rippled	7	13			15			
05-Jun-2016	Sunday	calm/rippled	1					5	0942	7
06-Jun-2016	Monday		1	11						
07-Jun-2016	Tuesday		0							
08-Jun-2016	Wednesday		2	1			3			
09-Jun-2016	Thursday		2	2						
10-Jun-2016	Friday		0							
11-Jun-2016	Saturday	calm/rippled	6	19			13	13	0934	18
12-Jun-2016	Sunday	calm/rippled	7	37			12			
13-Jun-2016	Monday	calm/rippled	9	23			11			
14-Jun-2016	Tuesday	calm/rippled	7	11			4			
15-Jun-2016	Wednesday		4	16			2			
16-Jun-2016	Thursday		1	2						
17-Jun-2016	Friday	choppy	20	32			25			
18-Jun-2016	Saturday	frequent whitecaps	13	52	1		9			
19-Jun-2016	Sunday	calm/rippled	8	40			10			
20-Jun-2016	Monday	choppy	8	33			7	7	0933	8
21-Jun-2016	Tuesday	choppy	8	28			10			
22-Jun-2016	Wednesday		0							
23-Jun-2016	Thursday		3	18			3			
24-Jun-2016	Friday	calm/rippled	18	70			21			
25-Jun-2016	Saturday	calm/rippled	13	66			13			
26-Jun-2016	Sunday	choppy	12	58			8			
27-Jun-2016	Monday		3	4			1			
28-Jun-2016	Tuesday	choppy	15	33			15	14	0937	17
29-Jun-2016	Wednesday	calm/rippled	8	24	6		9			
30-Jun-2016	Thursday		3	5			4			
01-Jul-2016	Friday (Canada Day)		4	11	1		4	16	0932	22
02-Jul-2016	Saturday	choppy	20	43			28			
03-Jul-2016	Sunday	calm/rippled	3							
	Totals	calm/rippled	114	315	6		120	11*		13*
	Totals	calm/rippled	67	285	1		80	9*		13*

\* Average number of boats Observed and Expanded

**Table 3: Simple area based cpue (catch per boat trip) expansion.**

Day Type	Average Expanded Boats	Number of Days	Total Estimated Effort	CPUE				Retained			
				Chinook	Coho	Sockeye	Halibut	Chinook	Coho	Sockeye	Halibut
Midweek	13	22	286	2.763	0.053		1.053	790	15		301
Weekend	13	8	104	4.254	0.015		1.194	442	2		124

**Table 4: Recent years estimates of retained catch and effort.**

Year	Month	Total Effort	Chinook Kept	Coho Kept	Sockeye Kept	Halibut Kept
2011	June	238	542	62		362
2012	June	469	605	230		518
2013	June	270	1106	108		311
2014	June	273	1022	38		286
2015	June	402	1031	152		402
2016	June	382	1184	8		414
5-Yr Avg	June	330	861	118		376

**Table 5: Sport Head Recovery Review.**

Species	Creel Marked Catch	Creel Mark Rate	Creel Submission Rate	iRec Marked Catch	iRec Mark Rate	iRec Submission Rate	Sport Head Recoveries
---------	--------------------	-----------------	-----------------------	-------------------	----------------	----------------------	-----------------------

**Table 6: Guided Proprtions Review.**

Data Source	Interviews / Angler Days	Guided Proportion
-------------	--------------------------	-------------------

Figure 1: Proportion of each day's fishing by hour.

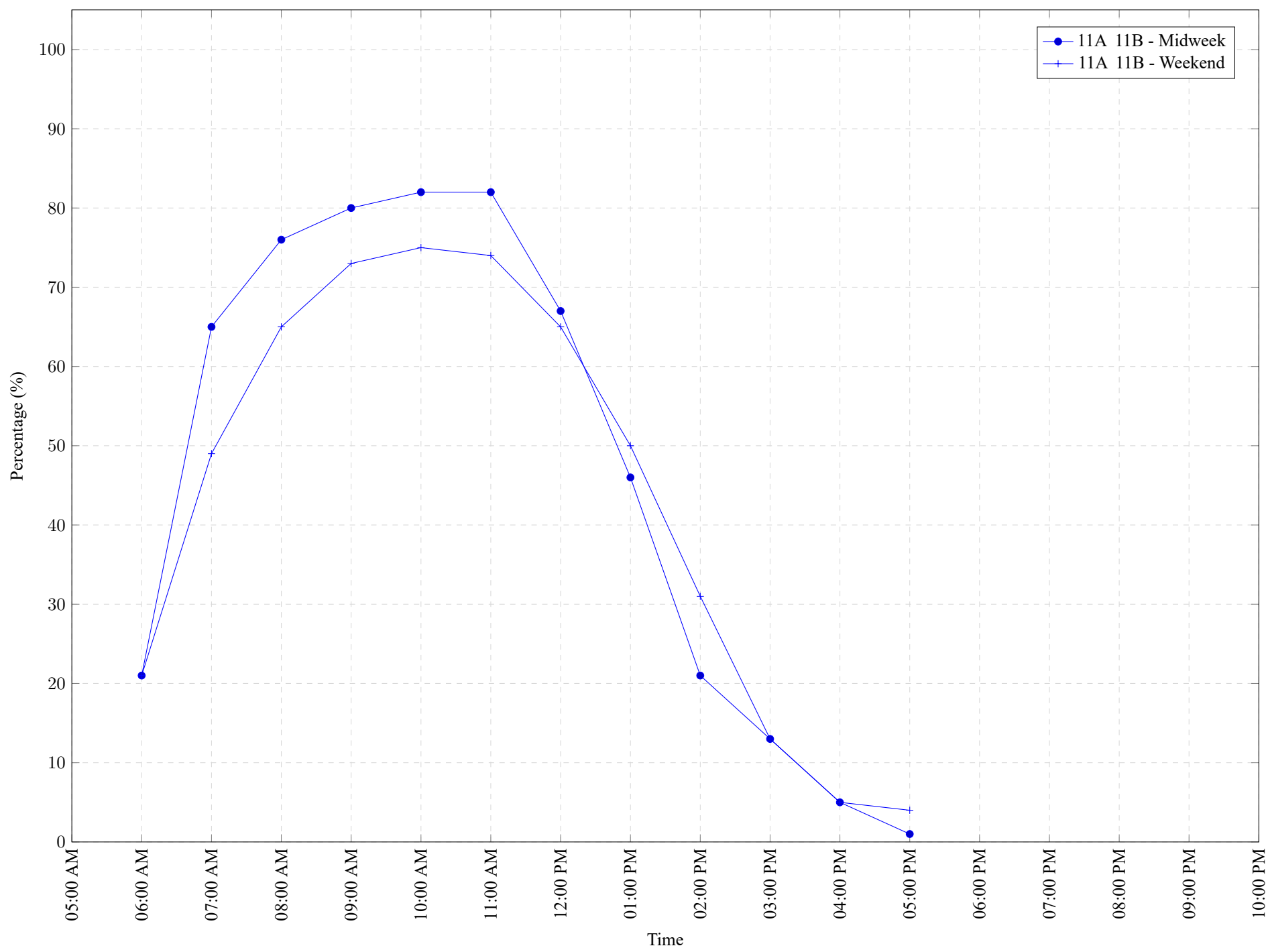


Table 7: Proportion of each day's fishing by hour.

Areas		Day Type	6:00 AM	7:00 AM	8:00 AM	9:00 AM	10:00 AM	11:00 AM	12:00 PM	01:00 PM	02:00 PM	03:00 PM	04:00 PM	05:00 PM	06:00 PM	07:00 PM	08:00 PM	09:00 PM	10:00 PM
11A	11B	Midweek	21%	65%	76%	80%	82%	82%	67%	46%	21%	13%	5%	1%	0%	0%	0%	0%	0%
11A	11B	Weekend	21%	49%	65%	73%	75%	74%	65%	50%	31%	13%	5%	4%	0%	0%	0%	0%	0%

**Table 8: Daily Fishing Conditions.**

Date	Day Type	Bear Cove	Quarterdeck Marina
29 May 2016	Weekend		
30 May 2016	Midweek		
31 May 2016	Midweek		
01 Jun 2016	Midweek		
02 Jun 2016	Midweek		
03 Jun 2016	Midweek		calm/rippled
04 Jun 2016	Weekend		calm/rippled
05 Jun 2016	Weekend		calm/rippled
06 Jun 2016	Midweek		
07 Jun 2016	Midweek		
08 Jun 2016	Midweek		
09 Jun 2016	Midweek		
10 Jun 2016	Midweek		
11 Jun 2016	Weekend	calm/rippled	
12 Jun 2016	Weekend		calm/rippled
13 Jun 2016	Midweek		calm/rippled
14 Jun 2016	Midweek		calm/rippled
15 Jun 2016	Midweek		
16 Jun 2016	Midweek		
17 Jun 2016	Midweek	calm/rippled	
18 Jun 2016	Weekend	choppy	
19 Jun 2016	Weekend	calm/rippled	
20 Jun 2016	Midweek		choppy
21 Jun 2016	Midweek		choppy
22 Jun 2016	Midweek		
23 Jun 2016	Midweek		
24 Jun 2016	Midweek		calm/rippled
25 Jun 2016	Weekend		calm/rippled
26 Jun 2016	Weekend		choppy
27 Jun 2016	Midweek		
28 Jun 2016	Midweek	calm/rippled	choppy
29 Jun 2016	Midweek	calm/rippled	
30 Jun 2016	Midweek		
01 Jul 2016	Weekend		
02 Jul 2016	Weekend	choppy	
03 Jul 2016	Weekend		calm/rippled