

Numbers of Interviews conducted contributing to the area by day and access site

		Becher Bay		Flemming		Jock's Dock (Crab Shack)		Pedder Bay	
		Evening	Morning	Evening	Morning	Evening	Morning	Evening	Morning
28 June, 2016	Midweek								
29 June, 2016	Midweek								
30 June, 2016	Midweek							5	
01 July, 2016	Weekend								
02 July, 2016	Weekend	6				14			
03 July, 2016	Weekend								
04 July, 2016	Midweek	3							
05 July, 2016	Midweek								
06 July, 2016	Midweek			3				26	
07 July, 2016	Midweek						15		
08 July, 2016	Midweek								
09 July, 2016	Weekend						15		
10 July, 2016	Weekend							19	
11 July, 2016	Midweek								
12 July, 2016	Midweek								
13 July, 2016	Midweek							8	
14 July, 2016	Midweek					5			
15 July, 2016	Midweek								
16 July, 2016	Weekend		11					40	
17 July, 2016	Weekend			1					
18 July, 2016	Midweek					5			
19 July, 2016	Midweek								
20 July, 2016	Midweek								
21 July, 2016	Midweek				2				
22 July, 2016	Midweek								
23 July, 2016	Weekend								
24 July, 2016	Weekend			2					
25 July, 2016	Midweek		7						
26 July, 2016	Midweek						15		
27 July, 2016	Midweek							18	
28 July, 2016	Midweek								
29 July, 2016	Midweek			2					
30 July, 2016	Weekend								
31 July, 2016	Weekend					12			27
01 August, 2016	Weekend	6							
02 August, 2016	Midweek								
03 August, 2016	Midweek					14			

Daily tally of interviews, catch and effort

Date	Day	Day Type	Area	Average Fishing Conditions	Interviews & Log Trips	Chinook	Coho	Sockeye	Halibut	Observed Fishing	Flight Time	Expanded Fishing
28 June, 2016	Tuesday	Midweek	Area 20 (East)		0							
29 June, 2016	Wednesday	Midweek	Area 20 (East)		2	2	2					
30 June, 2016	Thursday	Midweek	Area 20 (East)	frequent whitecaps	6	3	1					
01 July, 2016	Friday (Canada Day)	Weekend	Area 20 (East)		2	1				143	1051	216
02 July, 2016	Saturday	Weekend	Area 20 (East)	frequent whitecaps	22	9	3					
03 July, 2016	Sunday	Weekend	Area 20 (East)		2	4						
04 July, 2016	Monday	Midweek	Area 20 (East)	frequent whitecaps	4	1						
05 July, 2016	Tuesday	Midweek	Area 20 (East)		1	1				44	0922	74
06 July, 2016	Wednesday	Midweek	Area 20 (East)	calm/rippled	29	21	1					
07 July, 2016	Thursday	Midweek	Area 20 (East)	calm/rippled	15	11	3					
08 July, 2016	Friday	Midweek	Area 20 (East)		0							
09 July, 2016	Saturday	Weekend	Area 20 (East)	calm/rippled	15	13	1		1	198	0930	292
10 July, 2016	Sunday	Weekend	Area 20 (East)	choppy	20	6	1					
11 July, 2016	Monday	Midweek	Area 20 (East)		1							
12 July, 2016	Tuesday	Midweek	Area 20 (East)		2	2	1					
13 July, 2016	Wednesday	Midweek	Area 20 (East)	choppy	9	3	1			82	0925	138
14 July, 2016	Thursday	Midweek	Area 20 (East)	frequent whitecaps	6	8	1					
15 July, 2016	Friday	Midweek	Area 20 (East)		2	2						
16 July, 2016	Saturday	Weekend	Area 20 (East)	calm/rippled	54	9	3					
17 July, 2016	Sunday	Weekend	Area 20 (East)	choppy	2	1				199	0928	294
18 July, 2016	Monday	Midweek	Area 20 (East)	frequent whitecaps	6	8				3	0922	5
19 July, 2016	Tuesday	Midweek	Area 20 (East)		0							
20 July, 2016	Wednesday	Midweek	Area 20 (East)		0							
21 July, 2016	Thursday	Midweek	Area 20 (East)	calm/rippled	4	5						
22 July, 2016	Friday	Midweek	Area 20 (East)		1	2				45	0941	76
23 July, 2016	Saturday	Weekend	Area 20 (East)		1					152	0930	225
24 July, 2016	Sunday	Weekend	Area 20 (East)	frequent whitecaps	2	1						
25 July, 2016	Monday	Midweek	Area 20 (East)	frequent whitecaps	9	1						
26 July, 2016	Tuesday	Midweek	Area 20 (East)	frequent whitecaps	16	21	1		1			
27 July, 2016	Wednesday	Midweek	Area 20 (East)	choppy	20	12			1			
28 July, 2016	Thursday	Midweek	Area 20 (East)		2	4	1			125	0949	211
29 July, 2016	Friday	Midweek	Area 20 (East)	choppy	3	3						
30 July, 2016	Saturday	Weekend	Area 20 (East)		3	1	1			282	0928	416
31 July, 2016	Sunday	Weekend	Area 20 (East)	choppy	40	24	2					
01 August, 2016	Monday (B.C. Day)	Weekend	Area 20 (East)	frequent whitecaps	7	6				186	1024	281
02 August, 2016	Tuesday	Midweek	Area 20 (East)		3	2						
03 August, 2016	Wednesday	Midweek	Area 20 (East)	calm/rippled	15	11	1					
	Totals	Midweek	Area 20 (East)	choppy	130	105	9		2	60*		101*
	Totals	Weekend	Area 20 (East)	choppy	163	69	11		1	195*		289*

* Average number of boats observed and Expanded

Simple area based cpue (catch per boat trip) expansion

				CPUE				Retained			
Day Type	Average Expanded Boats	Number of Days	Total estimated Effort	Chinook	Coho	Sockeye	Halibut	Chinook	Coho	Sockeye	Halibut
Weekend	289	11	3179	0.4233	0.0675		0.0061	1346	215		19
Midweek	101	20	2020	0.8077	0.0692		0.0154	1632	140		31

Recent years estimates of retained catch and effort

Year	Area	Month	Total Effort	Chinook Kept	Coho Kept	Sockeye Kept	Halibut Kept
2011	Area 20 (East)	July	7488	2600	512	127	28
2012	Area 20 (East)	July	5883	2940	9332	51	87
2013	Area 20 (East)	July	6363	3598	4070	19	120
2014	Area 20 (East)	July	6775	3423	1510	31	115
2015	Area 20 (East)	July	8689	6295	1044	39	247
2016	Area 20 (East)	July	5608	3223	290		117
5-Yr Avg	Area 20 (East)	July	7040	3771	3294	53	119

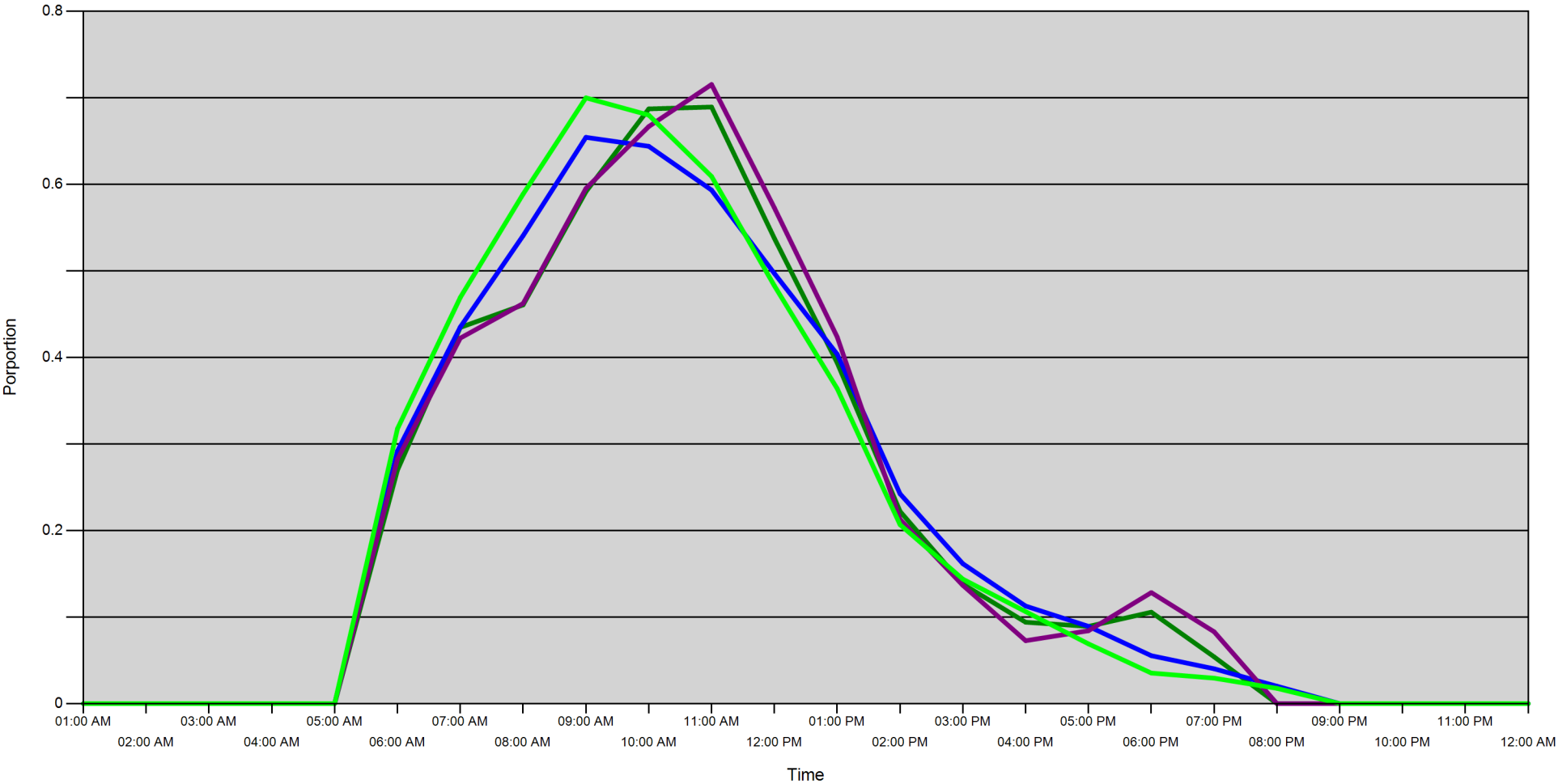
Sport Head Recovery Review

Year	Area	Month	Species	Creel Marked Catch	Creel Mark Rate	Creel Submission Rate	iRec Marked Catch	iRec Mark Rate	iRec Submission Rate	Sport Head recoveries
2016	Area 20	7	Coho	290	93 %	26 %	0	0 %	1 %	74
2016	Area 20	7	Chinook	1819	47 %	23 %	825	33 %	50 %	416

Guided Proprtions Review

Data Source	Year	Month	Area	Interviews	Guided Proportion
Creel	2016	07	Area 20	763	16 %
iRec	2016	07	Area 20	271	6 %

Proportion of each day's fishing by hour



Area		01:00 AM	02:00 AM	03:00 AM	04:00 AM	05:00 AM	06:00 AM	07:00 AM	08:00 AM	09:00 AM	10:00 AM	11:00 AM	12:00 PM	01:00 PM	02:00 PM	03:00 PM	04:00 PM	05:00 PM	06:00 PM	07:00 PM	08:00 PM	09:00 PM	10:00 PM	11:00 PM	12:00 AM
20D	Midweek	0	0	0	0	0	0.27	0.435	0.461	0.592	0.687	0.689	0.538	0.394	0.222	0.138	0.094	0.089	0.106	0.054	0	0	0	0	0
	Weekend	0	0	0	0	0	0.292	0.435	0.541	0.654	0.644	0.593	0.497	0.404	0.242	0.162	0.113	0.089	0.055	0.04	0.02	0	0	0	0
20C	Midweek	0	0	0	0	0	0.282	0.422	0.462	0.595	0.667	0.715	0.573	0.424	0.213	0.137	0.073	0.084	0.128	0.083	0	0	0	0	0
	Weekend	0	0	0	0	0	0.318	0.469	0.589	0.7	0.68	0.609	0.483	0.364	0.207	0.144	0.106	0.069	0.035	0.029	0.018	0	0	0	0

Daily Fishing Conditions

		Becher Bay	Flemming	Jock's Dock (Crab Shack)	Pedder Bay
28 June, 2016	Midweek				
29 June, 2016	Midweek				
30 June, 2016	Midweek				frequent whitecaps
01 July, 2016	Weekend				
02 July, 2016	Weekend	frequent whitecaps		frequent whitecaps	
03 July, 2016	Weekend				
04 July, 2016	Midweek	frequent whitecaps			
05 July, 2016	Midweek				
06 July, 2016	Midweek		calm/rippled		calm/rippled
07 July, 2016	Midweek			calm/rippled	
08 July, 2016	Midweek				
09 July, 2016	Weekend			calm/rippled	
10 July, 2016	Weekend				choppy
11 July, 2016	Midweek				
12 July, 2016	Midweek				
13 July, 2016	Midweek				choppy
14 July, 2016	Midweek			frequent whitecaps	
15 July, 2016	Midweek				
16 July, 2016	Weekend	calm/rippled			calm/rippled
17 July, 2016	Weekend		choppy		
18 July, 2016	Midweek			frequent whitecaps	
19 July, 2016	Midweek				
20 July, 2016	Midweek				
21 July, 2016	Midweek		calm/rippled		
22 July, 2016	Midweek				
23 July, 2016	Weekend				
24 July, 2016	Weekend		frequent whitecaps		
25 July, 2016	Midweek	frequent whitecaps			
26 July, 2016	Midweek			frequent whitecaps	
27 July, 2016	Midweek				choppy
28 July, 2016	Midweek				
29 July, 2016	Midweek		choppy		
30 July, 2016	Weekend				
31 July, 2016	Weekend			frequent whitecaps	choppy
01 August, 2016	Weekend	frequent whitecaps			
02 August, 2016	Midweek				
03 August, 2016	Midweek			calm/rippled	