

Numbers of Interviews conducted contributing to the area by day and access site

		Cougar Creek			Westview Marina	
		Evening	Mid Day	Morning	Evening	Mid Day
29 July, 2016	Midweek					1
30 July, 2016	Weekend				1	
31 July, 2016	Weekend					
01 August, 2016	Weekend					
02 August, 2016	Midweek		3			9
03 August, 2016	Midweek			1		5
04 August, 2016	Midweek					1
05 August, 2016	Midweek					9
06 August, 2016	Weekend					
07 August, 2016	Weekend			1		
08 August, 2016	Midweek			3		15
09 August, 2016	Midweek			1		12
10 August, 2016	Midweek	5				14
11 August, 2016	Midweek			1		13
12 August, 2016	Midweek					13
13 August, 2016	Weekend			1	9	
14 August, 2016	Weekend			1		
15 August, 2016	Midweek					
16 August, 2016	Midweek					10
17 August, 2016	Midweek					3
18 August, 2016	Midweek					6
19 August, 2016	Midweek					
20 August, 2016	Weekend					8
21 August, 2016	Weekend					6
22 August, 2016	Midweek	1				6
23 August, 2016	Midweek					
24 August, 2016	Midweek					
25 August, 2016	Midweek					8
26 August, 2016	Midweek					16
27 August, 2016	Weekend					3
28 August, 2016	Weekend					
29 August, 2016	Midweek					
30 August, 2016	Midweek					
31 August, 2016	Midweek					2
01 September, 2016	Midweek					
02 September, 2016	Midweek					
03 September, 2016	Weekend					

Daily tally of interviews, catch and effort

Date	Day	Day Type	Area	Average Fishing Conditions	Interviews & Log Trips	Chinook	Coho	Sockeye	Halibut	Observed Fishing	Flight Time	Expanded Fishing
29 July, 2016	Friday	Midweek	Area 125	large swells	2	1			1			
30 July, 2016	Saturday	Weekend	Area 125	large swells	1	5	2			6	0805	7
31 July, 2016	Sunday	Weekend	Area 125		0							
01 August, 2016	Monday (B.C. Day)	Weekend	Area 125		1				11			
02 August, 2016	Tuesday	Midweek	Area 125	choppy	12	15	5		3			
03 August, 2016	Wednesday	Midweek	Area 125	frequent whitecaps	9	20	2					
04 August, 2016	Thursday	Midweek	Area 125	frequent whitecaps	3	11			2			
05 August, 2016	Friday	Midweek	Area 125	large swells	9	9			6	3	0747	5
06 August, 2016	Saturday	Weekend	Area 125		0							
07 August, 2016	Sunday	Weekend	Area 125	calm/rippled	3	5			2	44	0756	67
08 August, 2016	Monday	Midweek	Area 125	frequent whitecaps	19	14	1		1			
09 August, 2016	Tuesday	Midweek	Area 125	calm/rippled	13	15	2		7			
10 August, 2016	Wednesday	Midweek	Area 125	frequent whitecaps	19	10	1		1			
11 August, 2016	Thursday	Midweek	Area 125	large swells	14	10	2		2	58	0759	91
12 August, 2016	Friday	Midweek	Area 125	choppy	14	18	9		8			
13 August, 2016	Saturday	Weekend	Area 125	large swells	10	7	6		2			
14 August, 2016	Sunday	Weekend	Area 125	choppy	2	1				28	0807	34
15 August, 2016	Monday	Midweek	Area 125		0							
16 August, 2016	Tuesday	Midweek	Area 125	large swells	10	9			5			
17 August, 2016	Wednesday	Midweek	Area 125	large swells	4	3			1			
18 August, 2016	Thursday	Midweek	Area 125	large swells	6	1				8	0757	13
19 August, 2016	Friday	Midweek	Area 125		0							
20 August, 2016	Saturday	Weekend	Area 125	large swells	8	7	2		6	6	0756	9
21 August, 2016	Sunday	Weekend	Area 125	large swells	7	4	1		4			
22 August, 2016	Monday	Midweek	Area 125	frequent whitecaps	8	2	1			8	0803	10
23 August, 2016	Tuesday	Midweek	Area 125		1				4			
24 August, 2016	Wednesday	Midweek	Area 125		0							
25 August, 2016	Thursday	Midweek	Area 125	choppy	8	4			9			
26 August, 2016	Friday	Midweek	Area 125	choppy	16	7			11			
27 August, 2016	Saturday	Weekend	Area 125	large swells	3					5	0804	6
28 August, 2016	Sunday	Weekend	Area 125		0							
29 August, 2016	Monday	Midweek	Area 125		0							
30 August, 2016	Tuesday	Midweek	Area 125		0					0	0746	0
31 August, 2016	Wednesday	Midweek	Area 125	large swells	2		4					
01 September, 2016	Thursday	Midweek	Area 125		0							
02 September, 2016	Friday	Midweek	Area 125		0							
03 September, 2016	Saturday	Weekend	Area 125		0					32	0811	39
	Totals	Midweek	Area 125	frequent whitecaps	167	148	27		60	15*		24*
	Totals	Weekend	Area 125	frequent whitecaps	34	24	9		25	21*		29*

* Average number of boats observed and Expanded

Simple area based cpue (catch per boat trip) expansion

				CPUE				Retained			
Day Type	Average Expanded Boats	Number of Days	Total estimated Effort	Chinook	Coho	Sockeye	Halibut	Chinook	Coho	Sockeye	Halibut
Midweek	24	22	528	0.8862	0.1617		0.3593	468	85		190
Weekend	29	9	261	0.7059	0.2647		0.7353	184	69		192

Recent years estimates of retained catch and effort

Year	Area	Month	Total Effort	Chinook Kept	Coho Kept	Sockeye Kept	Halibut Kept
2011	Area 125	August	1853	3284	1076	33	1428
2012	Area 125	August	2059	3126	974		1384
2013	Area 125	August	1112	2084	1472		670
2014	Area 125	August	1465	2822	1070	21	1532
2015	Area 125	August	659	934	101		392
2016	Area 125	August	682	525	134		245
5-Yr Avg	Area 125	August	1430	2450	939	27	1081

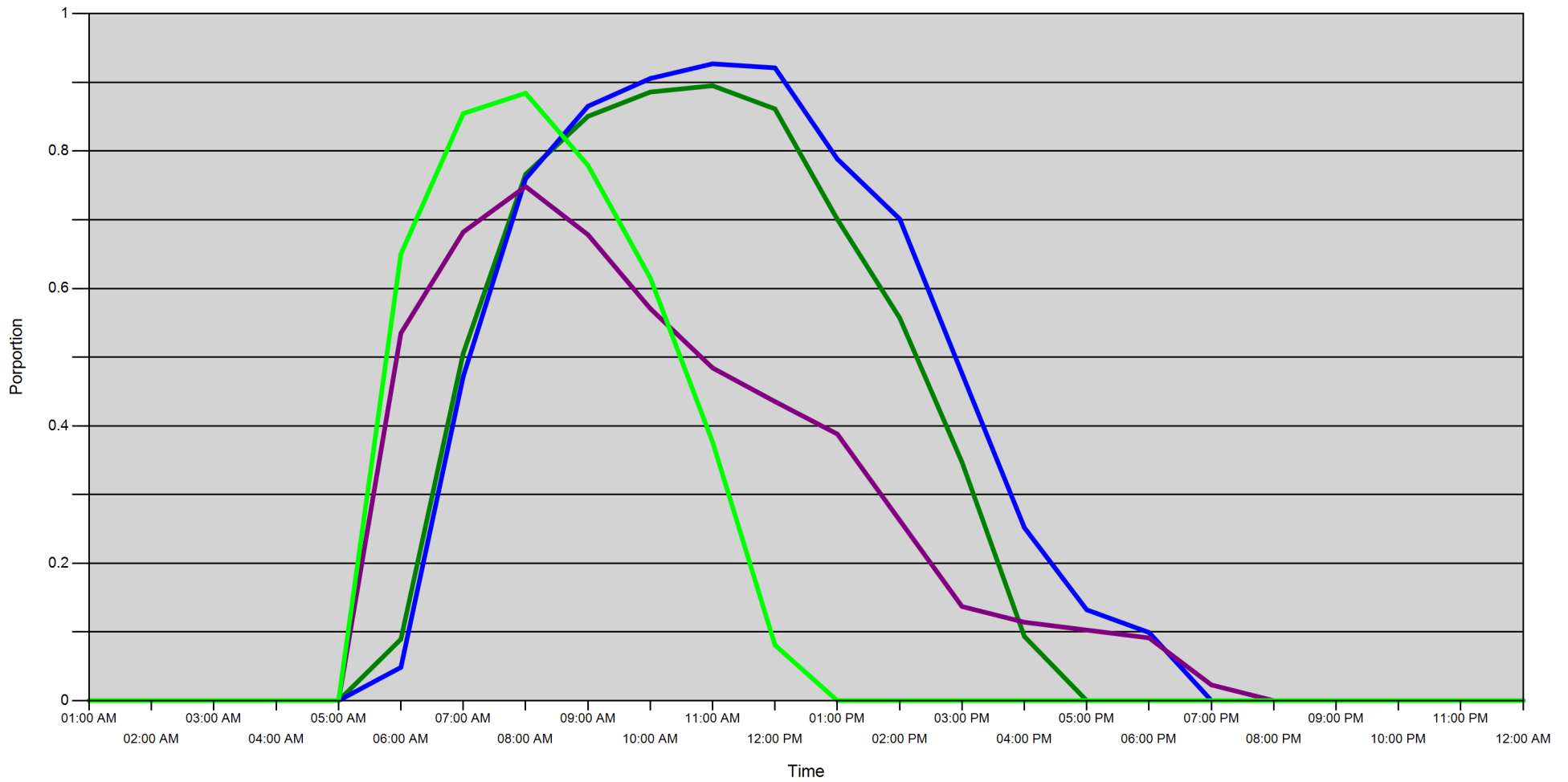
Sport Head Recovery Review

Year	Area	Month	Species	Creel Marked Catch	Creel Mark Rate	Creel Submission Rate	iRec Marked Catch	iRec Mark Rate	iRec Submission Rate	Sport Head recoveries
2016	Area 125	8	Coho	61	46 %	11 %	1721	98 %	0 %	7
2016	Area 125	8	Chinook	148	28 %	33 %	1163	34 %	4 %	49

Guided Proprtions Review

Data Source	Year	Month	Area	Interviews	Guided Proportion
Creel	2016	08	Area 125	188	23 %
iRec	2016	08	Area 125	160	69 %

Proportion of each day's fishing by hour



■ 125G - Midweek
 ■ 125G - Weekend
 ■ 125A - Midweek
 ■ 125A - Weekend

[illegible]

Daily Fishing Conditions

		Cougar Creek	Westview Marina
29 July, 2016	Midweek		large swells
30 July, 2016	Weekend		large swells
31 July, 2016	Weekend		
01 August, 2016	Weekend		
02 August, 2016	Midweek	choppy	frequent whitecaps
03 August, 2016	Midweek	calm/rippled	frequent whitecaps
04 August, 2016	Midweek		frequent whitecaps
05 August, 2016	Midweek		large swells
06 August, 2016	Weekend		
07 August, 2016	Weekend	calm/rippled	
08 August, 2016	Midweek	calm/rippled	frequent whitecaps
09 August, 2016	Midweek	calm/rippled	calm/rippled
10 August, 2016	Midweek	choppy	large swells
11 August, 2016	Midweek	calm/rippled	large swells
12 August, 2016	Midweek		choppy
13 August, 2016	Weekend	choppy	large swells
14 August, 2016	Weekend	choppy	
15 August, 2016	Midweek		
16 August, 2016	Midweek		large swells
17 August, 2016	Midweek		large swells
18 August, 2016	Midweek		large swells
19 August, 2016	Midweek		
20 August, 2016	Weekend		large swells
21 August, 2016	Weekend		large swells
22 August, 2016	Midweek	calm/rippled	frequent whitecaps
23 August, 2016	Midweek		
24 August, 2016	Midweek		
25 August, 2016	Midweek		choppy
26 August, 2016	Midweek		choppy
27 August, 2016	Weekend		large swells
28 August, 2016	Weekend		
29 August, 2016	Midweek		
30 August, 2016	Midweek		
31 August, 2016	Midweek		large swells
01 September, 2016	Midweek		
02 September, 2016	Midweek		
03 September, 2016	Weekend		