

Numbers of Interviews conducted contributing to the area by day and access site

		Becher Bay		Flemming		Jock's Dock (Crab Shack)		Pedder Bay	
		Evening	Morning	Evening	Morning	Evening	Morning	Evening	Morning
29 July, 2016	Midweek			2					
30 July, 2016	Weekend								
31 July, 2016	Weekend					12			27
01 August, 2016	Weekend	6							
02 August, 2016	Midweek								
03 August, 2016	Midweek					14			
04 August, 2016	Midweek								
05 August, 2016	Midweek								
06 August, 2016	Weekend								
07 August, 2016	Weekend						16		
08 August, 2016	Midweek								
09 August, 2016	Midweek							20	
10 August, 2016	Midweek								
11 August, 2016	Midweek								
12 August, 2016	Midweek								
13 August, 2016	Weekend		24			19			
14 August, 2016	Weekend			1					28
15 August, 2016	Midweek								
16 August, 2016	Midweek								
17 August, 2016	Midweek								28
18 August, 2016	Midweek			1					
19 August, 2016	Midweek								
20 August, 2016	Weekend				1			43	
21 August, 2016	Weekend						10		
22 August, 2016	Midweek								
23 August, 2016	Midweek				1				
24 August, 2016	Midweek	14							
25 August, 2016	Midweek								
26 August, 2016	Midweek						38		
27 August, 2016	Weekend							10	
28 August, 2016	Weekend					25			
29 August, 2016	Midweek							15	
30 August, 2016	Midweek		7						
31 August, 2016	Midweek					13			
01 September, 2016	Midweek		8						
02 September, 2016	Midweek								
03 September, 2016	Weekend								23

Daily tally of interviews, catch and effort

Date	Day	Day Type	Area	Average Fishing Conditions	Interviews & Log Trips	Chinook	Coho	Sockeye	Halibut	Observed Fishing	Flight Time	Expanded Fishing
29 July, 2016	Friday	Midweek	Area 20 (East)	choppy	3	3						
30 July, 2016	Saturday	Weekend	Area 20 (East)		3	1	1			282	0928	382
31 July, 2016	Sunday	Weekend	Area 20 (East)	choppy	40	24	2					
01 August, 2016	Monday (B.C. Day)	Weekend	Area 20 (East)	frequent whitecaps	7	6				186	1024	252
02 August, 2016	Tuesday	Midweek	Area 20 (East)		3	2						
03 August, 2016	Wednesday	Midweek	Area 20 (East)	calm/rippled	15	11	1					
04 August, 2016	Thursday	Midweek	Area 20 (East)		1	4				195	1031	299
05 August, 2016	Friday	Midweek	Area 20 (East)		3	5						
06 August, 2016	Saturday	Weekend	Area 20 (East)		2	4				255	1027	345
07 August, 2016	Sunday	Weekend	Area 20 (East)	calm/rippled	18	13	3		1			
08 August, 2016	Monday	Midweek	Area 20 (East)		1	6						
09 August, 2016	Tuesday	Midweek	Area 20 (East)	calm/rippled	21	14						
10 August, 2016	Wednesday	Midweek	Area 20 (East)		0							
11 August, 2016	Thursday	Midweek	Area 20 (East)		0					218	1014	335
12 August, 2016	Friday	Midweek	Area 20 (East)		1	2						
13 August, 2016	Saturday	Weekend	Area 20 (East)	calm/rippled	44	29	5		2	286	1029	387
14 August, 2016	Sunday	Weekend	Area 20 (East)	frequent whitecaps	29	12						
15 August, 2016	Monday	Midweek	Area 20 (East)		0					119	1033	183
16 August, 2016	Tuesday	Midweek	Area 20 (East)		1	2						
17 August, 2016	Wednesday	Midweek	Area 20 (East)	calm/rippled	29	24	6					
18 August, 2016	Thursday	Midweek	Area 20 (East)	calm/rippled	1							
19 August, 2016	Friday	Midweek	Area 20 (East)		0							
20 August, 2016	Saturday	Weekend	Area 20 (East)	calm/rippled	45	31	8					
21 August, 2016	Sunday	Weekend	Area 20 (East)	large swells	11	11	1			74	1020	100
22 August, 2016	Monday	Midweek	Area 20 (East)		1	2				122	1022	187
23 August, 2016	Tuesday	Midweek	Area 20 (East)	calm/rippled	1	2	1					
24 August, 2016	Wednesday	Midweek	Area 20 (East)	calm/rippled	14		8					
25 August, 2016	Thursday	Midweek	Area 20 (East)		0							
26 August, 2016	Friday	Midweek	Area 20 (East)	calm/rippled	38	29	11		1			
27 August, 2016	Saturday	Weekend	Area 20 (East)	frequent whitecaps	11	9	4			195	1024	264
28 August, 2016	Sunday	Weekend	Area 20 (East)	calm/rippled	25	20	10		1			
29 August, 2016	Monday	Midweek	Area 20 (East)	frequent whitecaps	15	4	6					
30 August, 2016	Tuesday	Midweek	Area 20 (East)	calm/rippled	8	10	2			174	1018	267
31 August, 2016	Wednesday	Midweek	Area 20 (East)	calm/rippled	14	13	9					
01 September, 2016	Thursday	Midweek	Area 20 (East)	calm/rippled	9	7	3					
02 September, 2016	Friday	Midweek	Area 20 (East)		1	3				127	1111	237
03 September, 2016	Saturday	Weekend	Area 20 (East)	calm/rippled	23	10	17					
	Totals	Midweek	Area 20 (East)	calm/rippled	167	130	44		1	166*		254*
	Totals	Weekend	Area 20 (East)	choppy	192	135	31		4	199*		270*

* Average number of boats observed and Expanded

Simple area based cpue (catch per boat trip) expansion

				CPUE				Retained			
Day Type	Average Expanded Boats	Number of Days	Total estimated Effort	Chinook	Coho	Sockeye	Halibut	Chinook	Coho	Sockeye	Halibut
Midweek	254	22	5588	0.7784	0.2635		0.006	4350	1472		33
Weekend	270	9	2430	0.7031	0.1615		0.0208	1709	392		51

Recent years estimates of retained catch and effort

Year	Area	Month	Total Effort	Chinook Kept	Coho Kept	Sockeye Kept	Halibut Kept
2011	Area 20 (East)	August	10339	4305	985	1448	44
2012	Area 20 (East)	August	7181	3912	2831	38	38
2013	Area 20 (East)	August	10794	10481	2582	166	188
2014	Area 20 (East)	August	9305	3552	2311	1505	24
2015	Area 20 (East)	August	9723	11388	1802	148	19
2016	Area 20 (East)	August	8726	5486	2054		150
5-Yr Avg	Area 20 (East)	August	9468	6728	2102	661	63

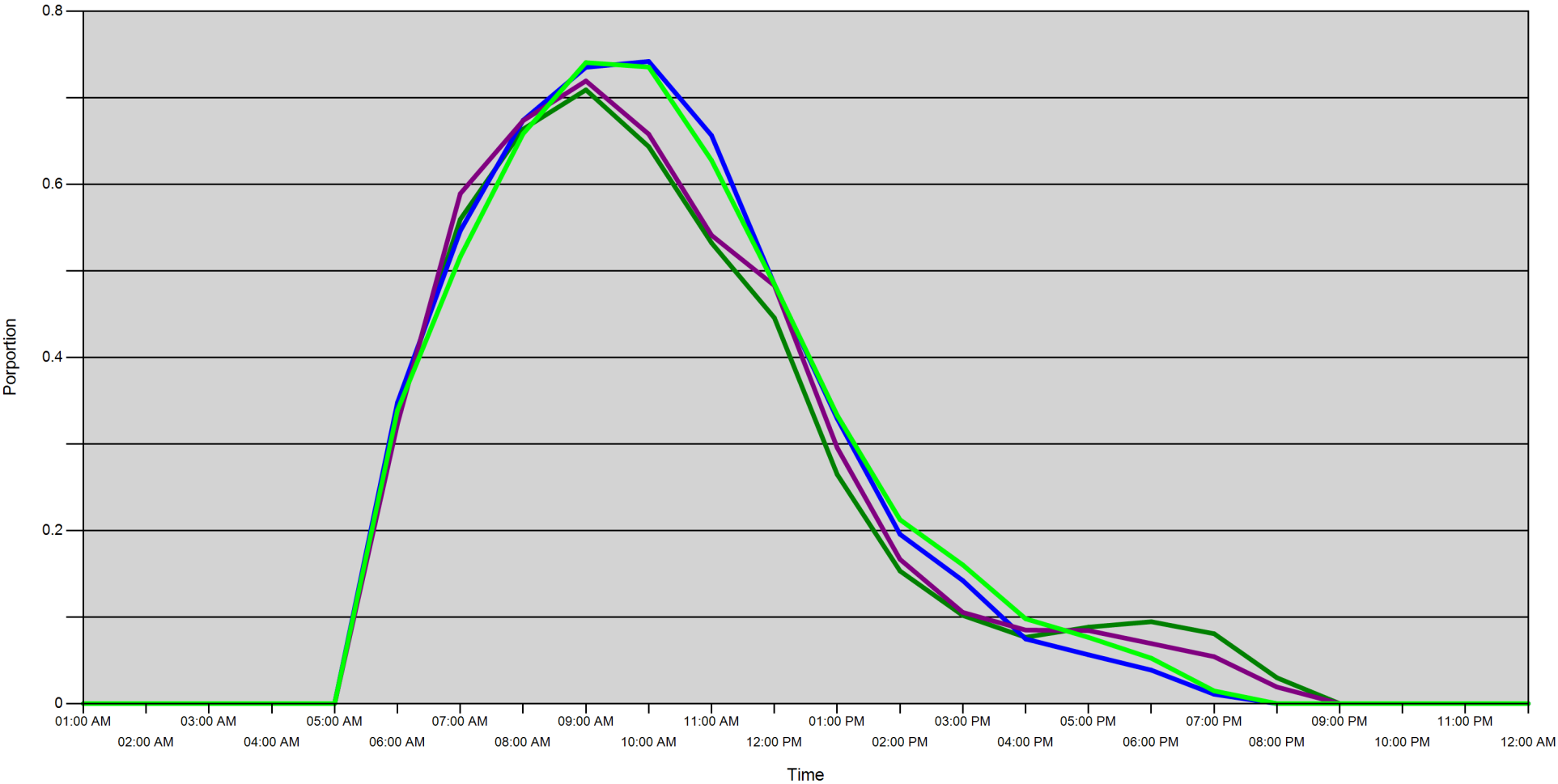
Sport Head Recovery Review

Year	Area	Month	Species	Creel Marked Catch	Creel Mark Rate	Creel Submission Rate	iRec Marked Catch	iRec Mark Rate	iRec Submission Rate	Sport Head recoveries
2016	Area 20	8	Coho	2064	92 %	24 %	3478	90 %	14 %	502
2016	Area 20	8	Chinook	2105	21 %	30 %	2221	27 %	29 %	636

Guided Proprtions Review

Data Source	Year	Month	Area	Interviews	Guided Proportion
Creel	2016	08	Area 20	863	12 %
iRec	2016	08	Area 20	368	5 %

Proportion of each day's fishing by hour



Area		01:00 AM	02:00 AM	03:00 AM	04:00 AM	05:00 AM	06:00 AM	07:00 AM	08:00 AM	09:00 AM	10:00 AM	11:00 AM	12:00 PM	01:00 PM	02:00 PM	03:00 PM	04:00 PM	05:00 PM	06:00 PM	07:00 PM	08:00 PM	09:00 PM	10:00 PM	11:00 PM	12:00 AM
20D	Midweek	0	0	0	0	0	0.339	0.56	0.664	0.709	0.644	0.532	0.446	0.265	0.153	0.102	0.077	0.088	0.095	0.081	0.03	0	0	0	0
	Weekend	0	0	0	0	0	0.348	0.546	0.674	0.735	0.742	0.657	0.484	0.329	0.196	0.142	0.075	0.056	0.039	0.011	0	0	0	0	0
20C	Midweek	0	0	0	0	0	0.323	0.589	0.674	0.72	0.658	0.541	0.483	0.296	0.167	0.105	0.085	0.084	0.069	0.054	0.019	0	0	0	0
	Weekend	0	0	0	0	0	0.339	0.516	0.659	0.741	0.736	0.628	0.485	0.333	0.213	0.16	0.098	0.077	0.052	0.015	0	0	0	0	0

Daily Fishing Conditions

		Becher Bay	Flemming	Jock's Dock (Crab Shack)	Pedder Bay
29 July, 2016	Midweek		choppy		
30 July, 2016	Weekend				
31 July, 2016	Weekend			frequent whitecaps	choppy
01 August, 2016	Weekend	frequent whitecaps			
02 August, 2016	Midweek				
03 August, 2016	Midweek			calm/rippled	
04 August, 2016	Midweek				
05 August, 2016	Midweek				
06 August, 2016	Weekend				
07 August, 2016	Weekend			calm/rippled	
08 August, 2016	Midweek				
09 August, 2016	Midweek				calm/rippled
10 August, 2016	Midweek				
11 August, 2016	Midweek				
12 August, 2016	Midweek				
13 August, 2016	Weekend	calm/rippled		choppy	
14 August, 2016	Weekend		choppy		frequent whitecaps
15 August, 2016	Midweek				
16 August, 2016	Midweek				
17 August, 2016	Midweek				calm/rippled
18 August, 2016	Midweek		calm/rippled		
19 August, 2016	Midweek				
20 August, 2016	Weekend		calm/rippled		calm/rippled
21 August, 2016	Weekend			large swells	
22 August, 2016	Midweek				
23 August, 2016	Midweek		calm/rippled		
24 August, 2016	Midweek	calm/rippled			
25 August, 2016	Midweek				
26 August, 2016	Midweek			calm/rippled	
27 August, 2016	Weekend				frequent whitecaps
28 August, 2016	Weekend			calm/rippled	
29 August, 2016	Midweek				frequent whitecaps
30 August, 2016	Midweek	calm/rippled			
31 August, 2016	Midweek			calm/rippled	
01 September, 2016	Midweek	calm/rippled			
02 September, 2016	Midweek				
03 September, 2016	Weekend				calm/rippled