

Numbers of Interviews conducted contributing to the area by day and access site

		Cowichan Bay		McDonald Beach	Sidney	
		Evening	Morning	Evening	Evening	Morning
28 April, 2017	Midweek					
29 April, 2017	Weekend					4
30 April, 2017	Weekend					
01 May, 2017	Midweek					
02 May, 2017	Midweek					
03 May, 2017	Midweek					
04 May, 2017	Midweek					
05 May, 2017	Midweek					
06 May, 2017	Weekend	14				13
07 May, 2017	Weekend				3	
08 May, 2017	Midweek	5				
09 May, 2017	Midweek					
10 May, 2017	Midweek					
11 May, 2017	Midweek					
12 May, 2017	Midweek					
13 May, 2017	Weekend					
14 May, 2017	Weekend		4	1		
15 May, 2017	Midweek		3			
16 May, 2017	Midweek					
17 May, 2017	Midweek					
18 May, 2017	Midweek					
19 May, 2017	Midweek					
20 May, 2017	Weekend					
21 May, 2017	Weekend					
22 May, 2017	Weekend					6
23 May, 2017	Midweek					
24 May, 2017	Midweek					
25 May, 2017	Midweek					
26 May, 2017	Midweek					
27 May, 2017	Weekend					
28 May, 2017	Weekend				2	
29 May, 2017	Midweek					
30 May, 2017	Midweek					
31 May, 2017	Midweek					
01 June, 2017	Midweek					
02 June, 2017	Midweek					
03 June, 2017	Weekend					13

Daily tally of interviews, catch and effort

Date	Day	Day Type	Area	Average Fishing Conditions	Interviews & Log Trips	Chinook	Coho	Sockeye	Halibut	Observed Fishing	Flight Time	Expanded Fishing
28 April, 2017	Friday	Midweek	Area 18		0							
29 April, 2017	Saturday	Weekend	Area 18	choppy	4							
30 April, 2017	Sunday	Weekend	Area 18		0							
01 May, 2017	Monday	Midweek	Area 18		0							
02 May, 2017	Tuesday	Midweek	Area 18		0							
03 May, 2017	Wednesday	Midweek	Area 18		1	1						
04 May, 2017	Thursday	Midweek	Area 18		1	2				24	1103	41
05 May, 2017	Friday	Midweek	Area 18		0							
06 May, 2017	Saturday	Weekend	Area 18	choppy	27	17						
07 May, 2017	Sunday	Weekend	Area 18	choppy	4	1				45	1100	66
08 May, 2017	Monday	Midweek	Area 18	calm/rippled	5							
09 May, 2017	Tuesday	Midweek	Area 18		0							
10 May, 2017	Wednesday	Midweek	Area 18		1							
11 May, 2017	Thursday	Midweek	Area 18		1							
12 May, 2017	Friday	Midweek	Area 18		0							
13 May, 2017	Saturday	Weekend	Area 18		0					12	1038	17
14 May, 2017	Sunday	Weekend	Area 18	calm/rippled	5							
15 May, 2017	Monday	Midweek	Area 18	calm/rippled	3	1						
16 May, 2017	Tuesday	Midweek	Area 18		0							
17 May, 2017	Wednesday	Midweek	Area 18		1							
18 May, 2017	Thursday	Midweek	Area 18		0							
19 May, 2017	Friday	Midweek	Area 18		1							
20 May, 2017	Saturday	Weekend	Area 18		0							
21 May, 2017	Sunday	Weekend	Area 18		0					4	1101	6
22 May, 2017	Monday (Victoria Day)	Weekend	Area 18	calm/rippled	6							
23 May, 2017	Tuesday	Midweek	Area 18		0							
24 May, 2017	Wednesday	Midweek	Area 18		0					1	1048	2
25 May, 2017	Thursday	Midweek	Area 18		0							
26 May, 2017	Friday	Midweek	Area 18		0							
27 May, 2017	Saturday	Weekend	Area 18		0							
28 May, 2017	Sunday	Weekend	Area 18	calm/rippled	2							
29 May, 2017	Monday	Midweek	Area 18		0					29	1112	49
30 May, 2017	Tuesday	Midweek	Area 18		0							
31 May, 2017	Wednesday	Midweek	Area 18		0							
01 June, 2017	Thursday	Midweek	Area 18		0							
02 June, 2017	Friday	Midweek	Area 18		4	5						
03 June, 2017	Saturday	Weekend	Area 18	calm/rippled	14	3						
	Totals	Midweek	Area 18	calm/rippled	14	4				18*		31*
	Totals	Weekend	Area 18	calm/rippled	44	18				20*		30*

* Average number of boats observed and Expanded

Simple area based cpue (catch per boat trip) expansion

				CPUE				Retained			
Day Type	Average Expanded Boats	Number of Days	Total estimated Effort	Chinook	Coho	Sockeye	Halibut	Chinook	Coho	Sockeye	Halibut
Midweek	31	22	682	0.2857				195			
Weekend	30	9	270	0.4091				110			

Recent years estimates of retained catch and effort

Year	Area	Month	Total Effort	Chinook Kept	Coho Kept	Sockeye Kept	Halibut Kept
2012	Area 18	May	463	22			26
2013	Area 18	May	558	54			14
2014	Area 18	May					
2015	Area 18	May	904	106			30
2016	Area 18	May	1026	71			
2017	Area 18	May	996	283			
5-Yr Avg	Area 18	May	738	63			23

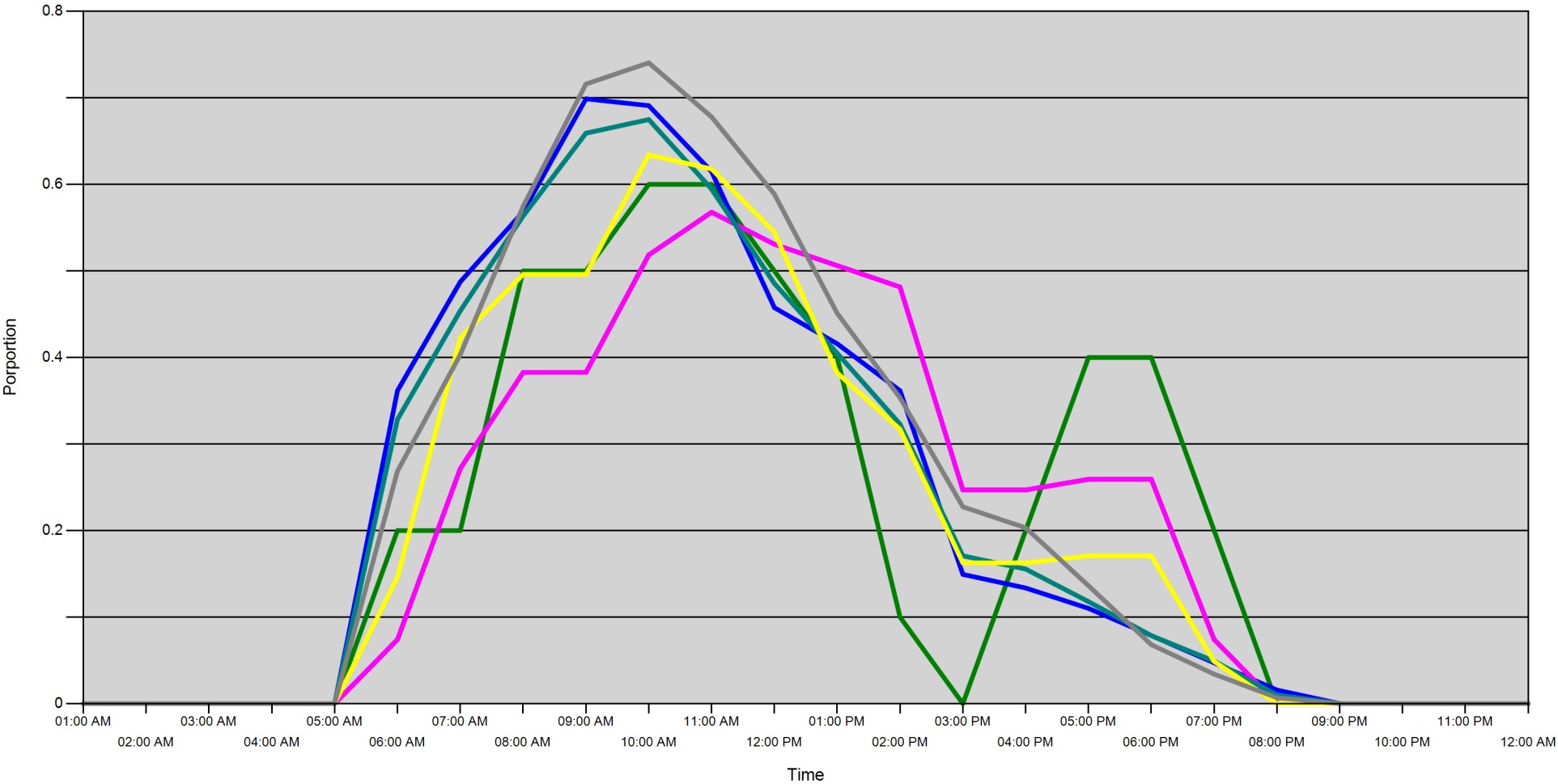
Sport Head Recovery Review

Year	Area	Month	Species	Creel Marked Catch	Creel Mark Rate	Creel Submission Rate	iRec Marked Catch	iRec Mark Rate	iRec Submission Rate	Sport Head recoveries
2017	Area 18	5	Chinook	79	28 %	4 %	173	47 %	2 %	3

Guided Proprtions Review

Data Source	Year	Month	Area	Interviews/Angler Days	Guided Proportion
Creel Interivews	2017	05	Area 18	58	1 %
iRec Anglers	2017	05	Area 18	2101	4 %
iRec Responses	2017	05	Area 18	88	1 %

Proportion of each day's fishing by hour



Area		01:00 AM	02:00 AM	03:00 AM	04:00 AM	05:00 AM	06:00 AM	07:00 AM	08:00 AM	09:00 AM	10:00 AM	11:00 AM	12:00 PM	01:00 PM	02:00 PM	03:00 PM	04:00 PM	05:00 PM	06:00 PM	07:00 PM	08:00 PM	09:00 PM	10:00 PM	11:00 PM	12:00 AM
18D	Midweek	0	0	0	0	0	0.2	0.2	0.5	0.5	0.6	0.6	0.5	0.4	0.1	0	0.2	0.4	0.4	0.2	0	0	0	0	0
	Weekend	0	0	0	0	0	0.362	0.487	0.568	0.699	0.691	0.615	0.458	0.416	0.362	0.149	0.134	0.11	0.079	0.047	0.016	0	0	0	0
18B	Midweek	0	0	0	0	0	0.074	0.272	0.383	0.383	0.519	0.568	0.531	0.506	0.481	0.247	0.247	0.259	0.259	0.074	0	0	0	0	0
	Weekend	0	0	0	0	0	0.328	0.454	0.563	0.659	0.675	0.595	0.485	0.405	0.323	0.171	0.156	0.118	0.079	0.049	0.01	0	0	0	0
18A	Midweek	0	0	0	0	0	0.074	0.272	0.383	0.383	0.519	0.568	0.531	0.506	0.481	0.247	0.247	0.259	0.259	0.074	0	0	0	0	0
	Weekend	0	0	0	0	0	0.328	0.454	0.563	0.659	0.675	0.595	0.485	0.405	0.323	0.171	0.156	0.118	0.079	0.049	0.01	0	0	0	0
18E	Midweek	0	0	0	0	0	0.146	0.423	0.496	0.496	0.634	0.618	0.545	0.382	0.317	0.163	0.163	0.171	0.171	0.049	0	0	0	0	0
	Weekend	0	0	0	0	0	0.269	0.403	0.575	0.716	0.741	0.678	0.589	0.451	0.353	0.227	0.203	0.136	0.068	0.034	0.007	0	0	0	0

Daily Fishing Conditions

		Cowichan Bay	McDonald Beach	Sidney
28 April, 2017	Midweek			
29 April, 2017	Weekend			choppy
30 April, 2017	Weekend			
01 May, 2017	Midweek			
02 May, 2017	Midweek			
03 May, 2017	Midweek			
04 May, 2017	Midweek			
05 May, 2017	Midweek			
06 May, 2017	Weekend	calm/rippled		choppy
07 May, 2017	Weekend			choppy
08 May, 2017	Midweek	calm/rippled		
09 May, 2017	Midweek			
10 May, 2017	Midweek			
11 May, 2017	Midweek			
12 May, 2017	Midweek			
13 May, 2017	Weekend			
14 May, 2017	Weekend	calm/rippled	calm/rippled	
15 May, 2017	Midweek	calm/rippled		
16 May, 2017	Midweek			
17 May, 2017	Midweek			
18 May, 2017	Midweek			
19 May, 2017	Midweek			
20 May, 2017	Weekend			
21 May, 2017	Weekend			
22 May, 2017	Weekend			calm/rippled
23 May, 2017	Midweek			
24 May, 2017	Midweek			
25 May, 2017	Midweek			
26 May, 2017	Midweek			
27 May, 2017	Weekend			
28 May, 2017	Weekend			calm/rippled
29 May, 2017	Midweek			
30 May, 2017	Midweek			
31 May, 2017	Midweek			
01 June, 2017	Midweek			
02 June, 2017	Midweek			
03 June, 2017	Weekend			calm/rippled