

Numbers of Interviews conducted contributing to the area by day and access site

		Flemming	Jock's Dock (Crab Shack)				Pedder Bay	
		Evening	Evening	Mid Day	Morning	Work Day	Evening	Morning
28 April, 2017	Midweek							4
29 April, 2017	Weekend							
30 April, 2017	Weekend							
01 May, 2017	Midweek							
02 May, 2017	Midweek							
03 May, 2017	Midweek						7	
04 May, 2017	Midweek							
05 May, 2017	Midweek							
06 May, 2017	Weekend				6			
07 May, 2017	Weekend						15	
08 May, 2017	Midweek				2			
09 May, 2017	Midweek	1						
10 May, 2017	Midweek							
11 May, 2017	Midweek							
12 May, 2017	Midweek		8					
13 May, 2017	Weekend		9				8	
14 May, 2017	Weekend							
15 May, 2017	Midweek							4
16 May, 2017	Midweek							
17 May, 2017	Midweek							
18 May, 2017	Midweek							
19 May, 2017	Midweek			10				
20 May, 2017	Weekend					10		
21 May, 2017	Weekend							10
22 May, 2017	Weekend							
23 May, 2017	Midweek						1	
24 May, 2017	Midweek							2
25 May, 2017	Midweek	1						
26 May, 2017	Midweek							
27 May, 2017	Weekend				8			6
28 May, 2017	Weekend	3					14	
29 May, 2017	Midweek							
30 May, 2017	Midweek				2			
31 May, 2017	Midweek							
01 June, 2017	Midweek							
02 June, 2017	Midweek							
03 June, 2017	Weekend				9			

Daily tally of interviews, catch and effort

Date	Day	Day Type	Area	Average Fishing Conditions	Interviews & Log Trips	Chinook	Coho	Sockeye	Halibut	Observed Fishing	Flight Time	Expanded Fishing
28 April, 2017	Friday	Midweek	Area 20 (East)	choppy	4							
29 April, 2017	Saturday	Weekend	Area 20 (East)		0					50	1005	60
30 April, 2017	Sunday	Weekend	Area 20 (East)		0							
01 May, 2017	Monday	Midweek	Area 20 (East)		0							
02 May, 2017	Tuesday	Midweek	Area 20 (East)		0							
03 May, 2017	Wednesday	Midweek	Area 20 (East)	calm/rippled	7							
04 May, 2017	Thursday	Midweek	Area 20 (East)		0					26	1012	33
05 May, 2017	Friday	Midweek	Area 20 (East)		0							
06 May, 2017	Saturday	Weekend	Area 20 (East)	frequent whitecaps	6				3			
07 May, 2017	Sunday	Weekend	Area 20 (East)	calm/rippled	15					40	1008	48
08 May, 2017	Monday	Midweek	Area 20 (East)	calm/rippled	2							
09 May, 2017	Tuesday	Midweek	Area 20 (East)	calm/rippled	1							
10 May, 2017	Wednesday	Midweek	Area 20 (East)		0							
11 May, 2017	Thursday	Midweek	Area 20 (East)		1	1						
12 May, 2017	Friday	Midweek	Area 20 (East)	choppy	8	1			2			
13 May, 2017	Saturday	Weekend	Area 20 (East)	choppy	18	2			1	44	0953	65
14 May, 2017	Sunday	Weekend	Area 20 (East)		0							
15 May, 2017	Monday	Midweek	Area 20 (East)	choppy	4							
16 May, 2017	Tuesday	Midweek	Area 20 (East)		0							
17 May, 2017	Wednesday	Midweek	Area 20 (East)		0							
18 May, 2017	Thursday	Midweek	Area 20 (East)		0							
19 May, 2017	Friday	Midweek	Area 20 (East)	calm/rippled	11	4			1			
20 May, 2017	Saturday	Weekend	Area 20 (East)	calm/rippled	11	1			17			
21 May, 2017	Sunday	Weekend	Area 20 (East)	calm/rippled	11	5				10	1014	12
22 May, 2017	Monday (Victoria Day)	Weekend	Area 20 (East)		0							
23 May, 2017	Tuesday	Midweek	Area 20 (East)	frequent whitecaps	1							
24 May, 2017	Wednesday	Midweek	Area 20 (East)	large swells	2	4				3	1010	4
25 May, 2017	Thursday	Midweek	Area 20 (East)	choppy	1	1						
26 May, 2017	Friday	Midweek	Area 20 (East)		0							
27 May, 2017	Saturday	Weekend	Area 20 (East)	calm/rippled	17	11						
28 May, 2017	Sunday	Weekend	Area 20 (East)	choppy	19	8						
29 May, 2017	Monday	Midweek	Area 20 (East)		0					35	1027	45
30 May, 2017	Tuesday	Midweek	Area 20 (East)	frequent whitecaps	2	5						
31 May, 2017	Wednesday	Midweek	Area 20 (East)		1	1						
01 June, 2017	Thursday	Midweek	Area 20 (East)		0							
02 June, 2017	Friday	Midweek	Area 20 (East)		0							
03 June, 2017	Saturday	Weekend	Area 20 (East)	frequent whitecaps	10	7			6			
	Totals	Midweek	Area 20 (East)	choppy	41	17			3	21*		27*
	Totals	Weekend	Area 20 (East)	choppy	97	27			21	31*		42*

\* Average number of boats observed and Expanded

Simple area based cpue (catch per boat trip) expansion

				CPUE				Retained			
Day Type	Average Expanded Boats	Number of Days	Total estimated Effort	Chinook	Coho	Sockeye	Halibut	Chinook	Coho	Sockeye	Halibut
Midweek	27	22	594	0.4146			0.0732	246			43
Weekend	42	9	378	0.2784			0.2165	105			82

Recent years estimates of retained catch and effort

Year	Area	Month	Total Effort	Chinook Kept	Coho Kept	Sockeye Kept	Halibut Kept
2012	Area 20 (East)	May	1612	424			107
2013	Area 20 (East)	May	802	104			268
2014	Area 20 (East)	May	2518	2139			449
2015	Area 20 (East)	May	1382	941	3		16
2016	Area 20 (East)	May	1610	885	36		49
2017	Area 20 (East)	May	976	321			58
5-Yr Avg	Area 20 (East)	May	1585	899	20		178

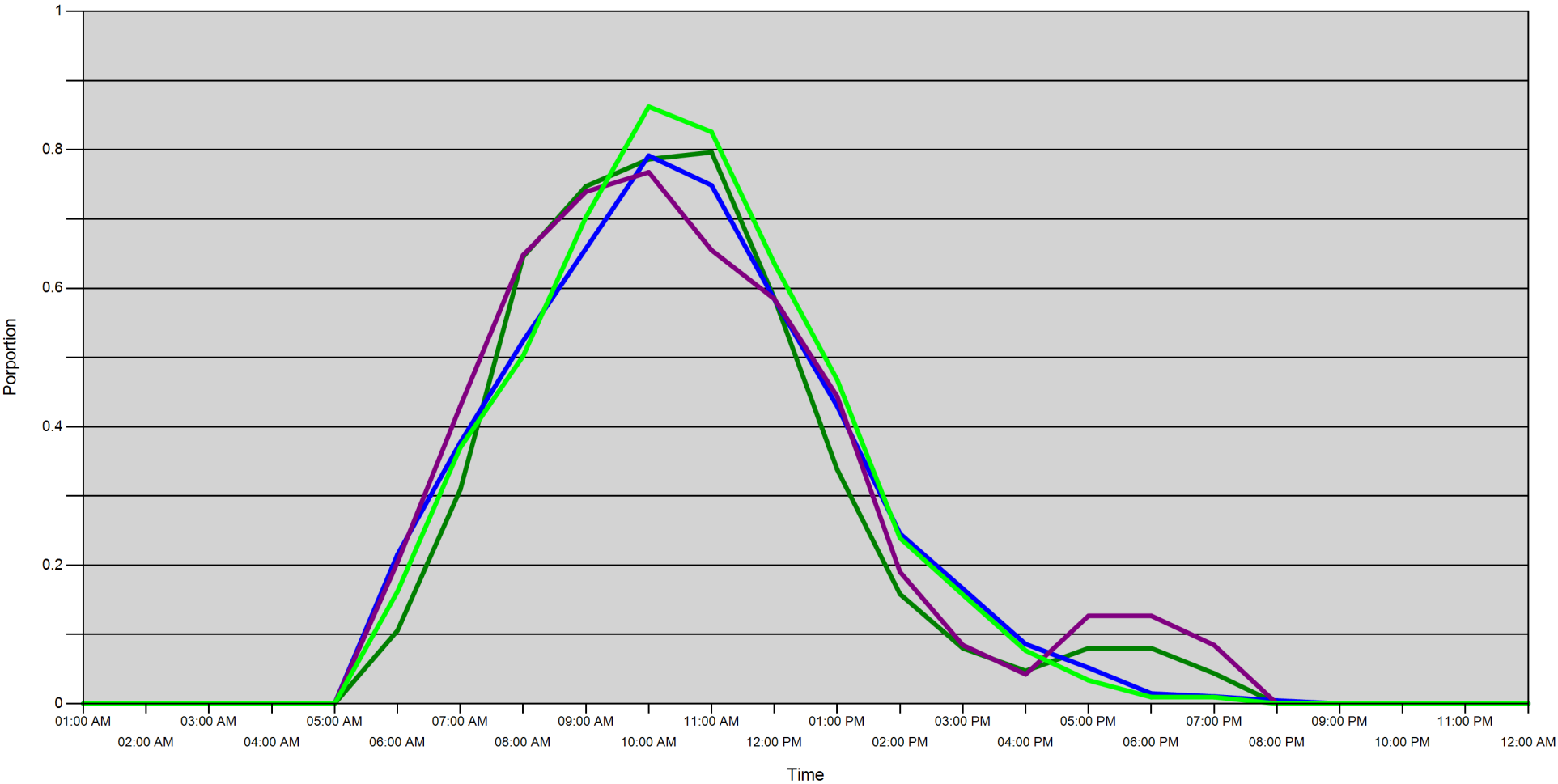
Sport Head Recovery Review

Year	Area	Month	Species	Creel Marked Catch	Creel Mark Rate	Creel Submission Rate	iRec Marked Catch	iRec Mark Rate	iRec Submission Rate	Sport Head recoveries
2017	Area 20	5	Coho			1 %			1 %	6
2017	Area 20	5	Chinook	271	84 %	43 %	264	63 %	44 %	116

Guided Proprtions Review

Data Source	Year	Month	Area	Interviews/Angler Days	Guided Proportion
Creel Interviews	2017	05	Area 20	138	26 %
iRec Anglers	2017	05	Area 20	3403	18 %
iRec Responses	2017	05	Area 20	135	3 %

Proportion of each day's fishing by hour



Area		01:00 AM	02:00 AM	03:00 AM	04:00 AM	05:00 AM	06:00 AM	07:00 AM	08:00 AM	09:00 AM	10:00 AM	11:00 AM	12:00 PM	01:00 PM	02:00 PM	03:00 PM	04:00 PM	05:00 PM	06:00 PM	07:00 PM	08:00 PM	09:00 PM	10:00 PM	11:00 PM	12:00 AM
20D	Midweek	0	0	0	0	0	0.105	0.309	0.645	0.747	0.786	0.796	0.585	0.338	0.158	0.08	0.047	0.08	0.08	0.044	0	0	0	0	0
	Weekend	0	0	0	0	0	0.215	0.377	0.524	0.657	0.791	0.749	0.584	0.43	0.246	0.166	0.086	0.052	0.015	0.01	0.004	0	0	0	0
20C	Midweek	0	0	0	0	0	0.204	0.43	0.648	0.739	0.768	0.655	0.585	0.444	0.19	0.085	0.042	0.127	0.127	0.085	0	0	0	0	0
	Weekend	0	0	0	0	0	0.162	0.37	0.502	0.703	0.862	0.826	0.636	0.468	0.239	0.157	0.077	0.034	0.009	0.009	0	0	0	0	0

Daily Fishing Conditions

		Flemming	Jock's Dock (Crab Shack)	Pedder Bay
28 April, 2017	Midweek			choppy
29 April, 2017	Weekend			
30 April, 2017	Weekend			
01 May, 2017	Midweek			
02 May, 2017	Midweek			
03 May, 2017	Midweek			calm/rippled
04 May, 2017	Midweek			
05 May, 2017	Midweek			
06 May, 2017	Weekend		frequent whitecaps	
07 May, 2017	Weekend			calm/rippled
08 May, 2017	Midweek		calm/rippled	
09 May, 2017	Midweek	calm/rippled		
10 May, 2017	Midweek			
11 May, 2017	Midweek			
12 May, 2017	Midweek		choppy	
13 May, 2017	Weekend		choppy	choppy
14 May, 2017	Weekend			
15 May, 2017	Midweek			choppy
16 May, 2017	Midweek			
17 May, 2017	Midweek			
18 May, 2017	Midweek			
19 May, 2017	Midweek		calm/rippled	
20 May, 2017	Weekend		calm/rippled	
21 May, 2017	Weekend			calm/rippled
22 May, 2017	Weekend			
23 May, 2017	Midweek			frequent whitecaps
24 May, 2017	Midweek			large swells
25 May, 2017	Midweek	choppy		
26 May, 2017	Midweek			
27 May, 2017	Weekend		calm/rippled	choppy
28 May, 2017	Weekend	choppy		choppy
29 May, 2017	Midweek			
30 May, 2017	Midweek		frequent whitecaps	
31 May, 2017	Midweek			
01 June, 2017	Midweek			
02 June, 2017	Midweek			
03 June, 2017	Weekend		frequent whitecaps	