



Daily tally of interviews, catch and effort

Date	Day	Day Type	Area	Average Fishing Conditions	Interviews & Log Trips	Chinook	Coho	Sockeye	Halibut	Observed Fishing	Flight Time	Expanded Fishing
29 May, 2017	Monday	Midweek	Area 19 (JDF)		0					7	1042	11
30 May, 2017	Tuesday	Midweek	Area 19 (JDF)		0							
31 May, 2017	Wednesday	Midweek	Area 19 (JDF)		1							
01 June, 2017	Thursday	Midweek	Area 19 (JDF)		0							
02 June, 2017	Friday	Midweek	Area 19 (JDF)	calm/rippled	21	3			7			
03 June, 2017	Saturday	Weekend	Area 19 (JDF)		0							
04 June, 2017	Sunday	Weekend	Area 19 (JDF)	frequent whitecaps	5					3	1042	5
05 June, 2017	Monday	Midweek	Area 19 (JDF)	choppy	9	6				17	1043	27
06 June, 2017	Tuesday	Midweek	Area 19 (JDF)		0							
07 June, 2017	Wednesday	Midweek	Area 19 (JDF)		0							
08 June, 2017	Thursday	Midweek	Area 19 (JDF)		0							
09 June, 2017	Friday	Midweek	Area 19 (JDF)		0							
10 June, 2017	Saturday	Weekend	Area 19 (JDF)		0							
11 June, 2017	Sunday	Weekend	Area 19 (JDF)	calm/rippled	37	14						
12 June, 2017	Monday	Midweek	Area 19 (JDF)		0							
13 June, 2017	Tuesday	Midweek	Area 19 (JDF)		0					4	1053	6
14 June, 2017	Wednesday	Midweek	Area 19 (JDF)	calm/rippled	2							
15 June, 2017	Thursday	Midweek	Area 19 (JDF)		0							
16 June, 2017	Friday	Midweek	Area 19 (JDF)	choppy	2				1			
17 June, 2017	Saturday	Weekend	Area 19 (JDF)	choppy	5	1			1	32	1045	55
18 June, 2017	Sunday	Weekend	Area 19 (JDF)	calm/rippled	2				4			
19 June, 2017	Monday	Midweek	Area 19 (JDF)	calm/rippled	1				2			
20 June, 2017	Tuesday	Midweek	Area 19 (JDF)		0							
21 June, 2017	Wednesday	Midweek	Area 19 (JDF)	frequent whitecaps	1					6	1025	9
22 June, 2017	Thursday	Midweek	Area 19 (JDF)	calm/rippled	13	11			7			
23 June, 2017	Friday	Midweek	Area 19 (JDF)		0							
24 June, 2017	Saturday	Weekend	Area 19 (JDF)	choppy	3							
25 June, 2017	Sunday	Weekend	Area 19 (JDF)	calm/rippled	3							
26 June, 2017	Monday	Midweek	Area 19 (JDF)	frequent whitecaps	1							
27 June, 2017	Tuesday	Midweek	Area 19 (JDF)	calm/rippled	4							
28 June, 2017	Wednesday	Midweek	Area 19 (JDF)		0							
29 June, 2017	Thursday	Midweek	Area 19 (JDF)		0					38	1037	62
30 June, 2017	Friday	Midweek	Area 19 (JDF)		0							
01 July, 2017	Saturday	Weekend	Area 19 (JDF)		0					7	1032	12
02 July, 2017	Sunday	Weekend	Area 19 (JDF)	frequent whitecaps	2					26	1023	45
03 July, 2017	Monday (Canada Day)	Weekend	Area 19 (JDF)		0							
	Totals	Midweek	Area 19 (JDF)	choppy	54	20			17	16*		26*
	Totals	Weekend	Area 19 (JDF)	choppy	55	15			5	18*		30*

\* Average number of boats observed and Expanded

Simple area based cpue (catch per boat trip) expansion

				CPUE				Retained			
Day Type	Average Expanded Boats	Number of Days	Total estimated Effort	Chinook	Coho	Sockeye	Halibut	Chinook	Coho	Sockeye	Halibut
Midweek	26	22	572	0.3704			0.3148	212			180
Weekend	30	8	240	0.2727			0.0909	65			22

Recent years estimates of retained catch and effort

Year	Area	Month	Total Effort	Chinook Kept	Coho Kept	Sockeye Kept	Halibut Kept
2012	Area 19 (JDF)	June	1338	180	7		451
2013	Area 19 (JDF)	June	2240	597	89		1019
2014	Area 19 (JDF)	June	1656	264			684
2015	Area 19 (JDF)	June	1555	425			68
2016	Area 19 (JDF)	June	2004	430			133
2017	Area 19 (JDF)	June	840	212			214
5-Yr Avg	Area 19 (JDF)	June	1759	379	48		471

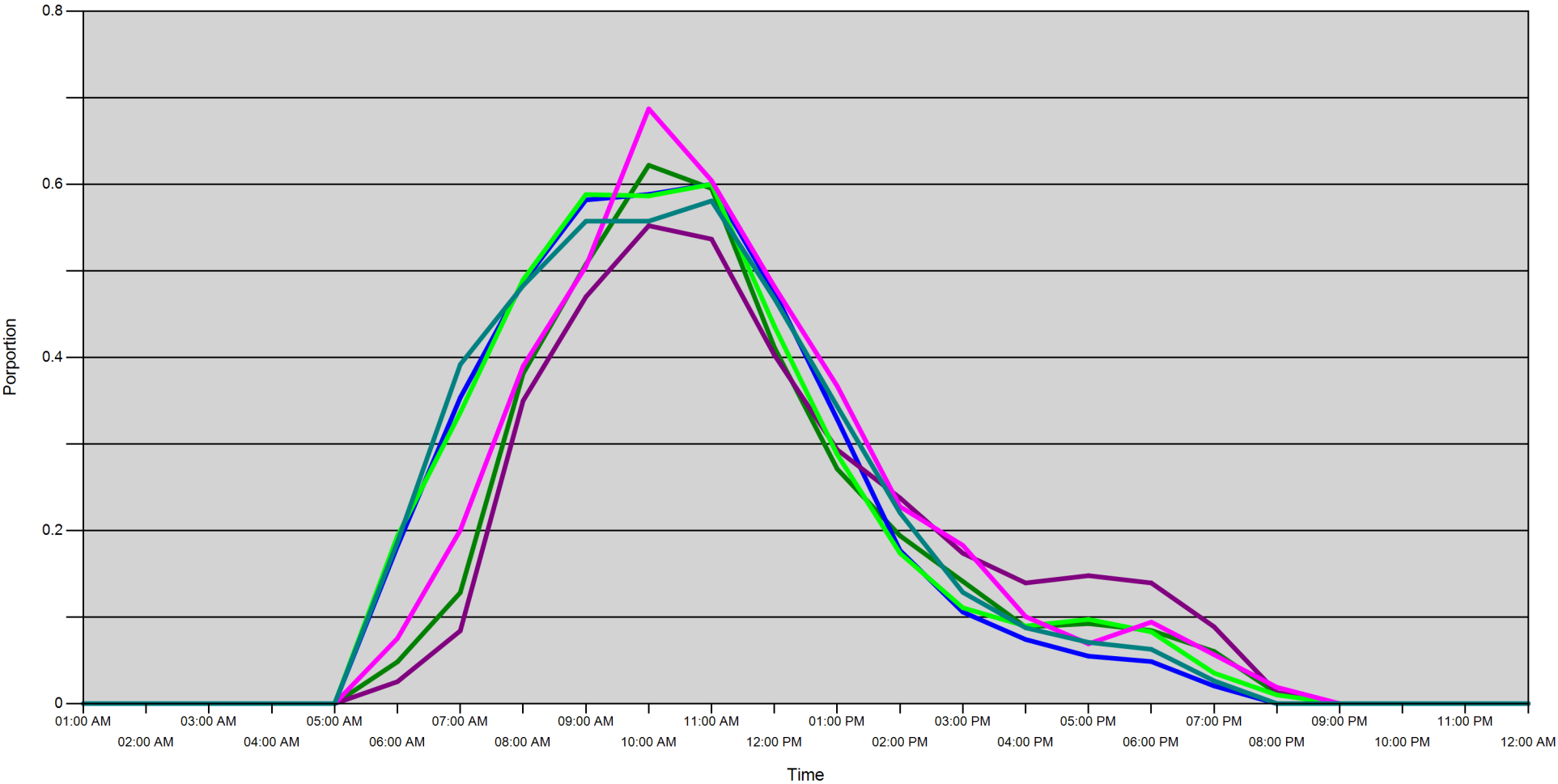
Sport Head Recovery Review

Year	Area	Month	Species	Creel Marked Catch	Creel Mark Rate	Creel Submission Rate	iRec Marked Catch	iRec Mark Rate	iRec Submission Rate	Sport Head recoveries
2017	Area 19 (JDF)	6	Coho			1 %	45	100 %	4 %	2
2017	Area 19 (JDF)	6	Chinook	188	89 %	54 %	1061	63 %	10 %	101

Guided Proprtions Review

Data Source	Year	Month	Area	Interviews/Angler Days	Guided Proportion
Creel Interivews	2017	06	Area 19 (JDF)	108	2 %
iRec Anglers	2017	06	Area 19 (JDF)	4603	13 %
iRec Responses	2017	06	Area 19 (JDF)	112	1 %

Proportion of each day's fishing by hour



Area		01:00 AM	02:00 AM	03:00 AM	04:00 AM	05:00 AM	06:00 AM	07:00 AM	08:00 AM	09:00 AM	10:00 AM	11:00 AM	12:00 PM	01:00 PM	02:00 PM	03:00 PM	04:00 PM	05:00 PM	06:00 PM	07:00 PM	08:00 PM	09:00 PM	10:00 PM	11:00 PM	12:00 AM
19D	Midweek	0	0	0	0	0	0.048	0.128	0.381	0.508	0.622	0.595	0.412	0.271	0.194	0.141	0.088	0.092	0.084	0.06	0.012	0	0	0	0
	Weekend	0	0	0	0	0	0.182	0.354	0.487	0.582	0.588	0.6	0.475	0.329	0.177	0.106	0.074	0.055	0.049	0.02	0	0	0	0	0
19C	Midweek	0	0	0	0	0	0.025	0.084	0.35	0.47	0.552	0.537	0.403	0.293	0.238	0.174	0.139	0.148	0.139	0.089	0.013	0	0	0	0
	Weekend	0	0	0	0	0	0.194	0.336	0.49	0.588	0.587	0.6	0.436	0.288	0.174	0.111	0.09	0.097	0.083	0.035	0.01	0	0	0	0
19E	Midweek	0	0	0	0	0	0.075	0.2	0.39	0.505	0.687	0.604	0.482	0.367	0.228	0.183	0.1	0.069	0.094	0.057	0.019	0	0	0	0
	Weekend	0	0	0	0	0	0.187	0.392	0.483	0.557	0.558	0.581	0.468	0.343	0.22	0.129	0.088	0.071	0.063	0.026	0	0	0	0	0

Daily Fishing Conditions

		Becher Bay	Cattle Point	Flemming	Jock's Dock (Crab Shack)	Pedder Bay	Sidney
29 May, 2017	Midweek						
30 May, 2017	Midweek						
31 May, 2017	Midweek						
01 June, 2017	Midweek						
02 June, 2017	Midweek			calm/rippled			
03 June, 2017	Weekend						
04 June, 2017	Weekend		frequent whitecaps			frequent whitecaps	
05 June, 2017	Midweek			choppy			
06 June, 2017	Midweek						
07 June, 2017	Midweek						
08 June, 2017	Midweek						
09 June, 2017	Midweek						
10 June, 2017	Weekend						
11 June, 2017	Weekend		calm/rippled	calm/rippled			calm/rippled
12 June, 2017	Midweek						
13 June, 2017	Midweek						
14 June, 2017	Midweek					calm/rippled	
15 June, 2017	Midweek						
16 June, 2017	Midweek					choppy	
17 June, 2017	Weekend			choppy	calm/rippled		
18 June, 2017	Weekend	calm/rippled					
19 June, 2017	Midweek	calm/rippled					
20 June, 2017	Midweek						
21 June, 2017	Midweek			frequent whitecaps			
22 June, 2017	Midweek		calm/rippled				
23 June, 2017	Midweek						
24 June, 2017	Weekend					choppy	
25 June, 2017	Weekend					calm/rippled	
26 June, 2017	Midweek			frequent whitecaps			
27 June, 2017	Midweek		calm/rippled				
28 June, 2017	Midweek						
29 June, 2017	Midweek						
30 June, 2017	Midweek						
01 July, 2017	Weekend						
02 July, 2017	Weekend					frequent whitecaps	
03 July, 2017	Weekend						