

Numbers of Interviews conducted contributing to the area by day and access site

		Becher Bay		Flemming		Jock's Dock (Crab Shack)		Pedder Bay	
		Evening	Morning	Evening	Morning	Evening	Morning	Evening	Morning
29 May, 2017	Midweek								
30 May, 2017	Midweek						2		
31 May, 2017	Midweek								
01 June, 2017	Midweek								
02 June, 2017	Midweek								
03 June, 2017	Weekend						9		
04 June, 2017	Weekend								9
05 June, 2017	Midweek								
06 June, 2017	Midweek								
07 June, 2017	Midweek						7		
08 June, 2017	Midweek								
09 June, 2017	Midweek					6			
10 June, 2017	Weekend						11	11	
11 June, 2017	Weekend				4				
12 June, 2017	Midweek								
13 June, 2017	Midweek								
14 June, 2017	Midweek								9
15 June, 2017	Midweek								
16 June, 2017	Midweek							2	
17 June, 2017	Weekend			1		12			
18 June, 2017	Weekend		10						
19 June, 2017	Midweek		9						
20 June, 2017	Midweek								
21 June, 2017	Midweek								
22 June, 2017	Midweek								
23 June, 2017	Midweek								
24 June, 2017	Weekend					11			25
25 June, 2017	Weekend	11						23	
26 June, 2017	Midweek				1				
27 June, 2017	Midweek								
28 June, 2017	Midweek						6		
29 June, 2017	Midweek							8	
30 June, 2017	Midweek	2							
01 July, 2017	Weekend		4						3
02 July, 2017	Weekend							12	
03 July, 2017	Weekend								

Daily tally of interviews, catch and effort

Date	Day	Day Type	Area	Average Fishing Conditions	Interviews & Log Trips	Chinook	Coho	Sockeye	Halibut	Observed Fishing	Flight Time	Expanded Fishing
29 May, 2017	Monday	Midweek	Area 20 (East)		0					35	1027	49
30 May, 2017	Tuesday	Midweek	Area 20 (East)	frequent whitecaps	2	5						
31 May, 2017	Wednesday	Midweek	Area 20 (East)		1	1						
01 June, 2017	Thursday	Midweek	Area 20 (East)		0							
02 June, 2017	Friday	Midweek	Area 20 (East)		0							
03 June, 2017	Saturday	Weekend	Area 20 (East)	frequent whitecaps	10	7			6			
04 June, 2017	Sunday	Weekend	Area 20 (East)	frequent whitecaps	10		1			32	1027	53
05 June, 2017	Monday	Midweek	Area 20 (East)		1	1				36	1024	51
06 June, 2017	Tuesday	Midweek	Area 20 (East)		3	5	1					
07 June, 2017	Wednesday	Midweek	Area 20 (East)	calm/rippled	8	2						
08 June, 2017	Thursday	Midweek	Area 20 (East)		2	3						
09 June, 2017	Friday	Midweek	Area 20 (East)	choppy	7	4			3			
10 June, 2017	Saturday	Weekend	Area 20 (East)	choppy	24	23	2		2			
11 June, 2017	Sunday	Weekend	Area 20 (East)	calm/rippled	5	1	4					
12 June, 2017	Monday	Midweek	Area 20 (East)		0							
13 June, 2017	Tuesday	Midweek	Area 20 (East)		0					10	1037	14
14 June, 2017	Wednesday	Midweek	Area 20 (East)	calm/rippled	11	7	1					
15 June, 2017	Thursday	Midweek	Area 20 (East)		3	4						
16 June, 2017	Friday	Midweek	Area 20 (East)	choppy	5	8						
17 June, 2017	Saturday	Weekend	Area 20 (East)	calm/rippled	13	14			2	136	1025	225
18 June, 2017	Sunday	Weekend	Area 20 (East)	calm/rippled	11	2	1					
19 June, 2017	Monday	Midweek	Area 20 (East)	calm/rippled	10	13						
20 June, 2017	Tuesday	Midweek	Area 20 (East)		1	1						
21 June, 2017	Wednesday	Midweek	Area 20 (East)		2	3				29	1006	41
22 June, 2017	Thursday	Midweek	Area 20 (East)		2	3						
23 June, 2017	Friday	Midweek	Area 20 (East)		1	2						
24 June, 2017	Saturday	Weekend	Area 20 (East)	choppy	41	16						
25 June, 2017	Sunday	Weekend	Area 20 (East)	calm/rippled	37	15						
26 June, 2017	Monday	Midweek	Area 20 (East)	frequent whitecaps	1							
27 June, 2017	Tuesday	Midweek	Area 20 (East)		1	2						
28 June, 2017	Wednesday	Midweek	Area 20 (East)	choppy	7	5	1		3			
29 June, 2017	Thursday	Midweek	Area 20 (East)	choppy	8	5	5			103	1017	145
30 June, 2017	Friday	Midweek	Area 20 (East)	frequent whitecaps	4	4	1					
01 July, 2017	Saturday	Weekend	Area 20 (East)	large swells	7	5				25	1018	41
02 July, 2017	Sunday	Weekend	Area 20 (East)	frequent whitecaps	14	6				85	1010	141
03 July, 2017	Monday (Canada Day)	Weekend	Area 20 (East)		1	3						
	Totals	Midweek	Area 20 (East)	choppy	77	72	9		6	45*		63*
	Totals	Weekend	Area 20 (East)	choppy	151	78	8		10	84*		139*

* Average number of boats observed and Expanded

Simple area based cpue (catch per boat trip) expansion

				CPUE				Retained			
Day Type	Average Expanded Boats	Number of Days	Total estimated Effort	Chinook	Coho	Sockeye	Halibut	Chinook	Coho	Sockeye	Halibut
Midweek	63	22	1386	0.9351	0.1169		0.0779	1296	162		108
Weekend	139	8	1112	0.5166	0.053		0.0662	574	59		74

Recent years estimates of retained catch and effort

Year	Area	Month	Total Effort	Chinook Kept	Coho Kept	Sockeye Kept	Halibut Kept
2012	Area 20 (East)	June	3012	1962	43		138
2013	Area 20 (East)	June	5240	3462	2741		988
2014	Area 20 (East)	June	4014	2718			169
2015	Area 20 (East)	June	4058	3432	349		173
2016	Area 20 (East)	June	2735	882	36		210
2017	Area 20 (East)	June	2578	1448	261		334
5-Yr Avg	Area 20 (East)	June	3812	2491	792		336

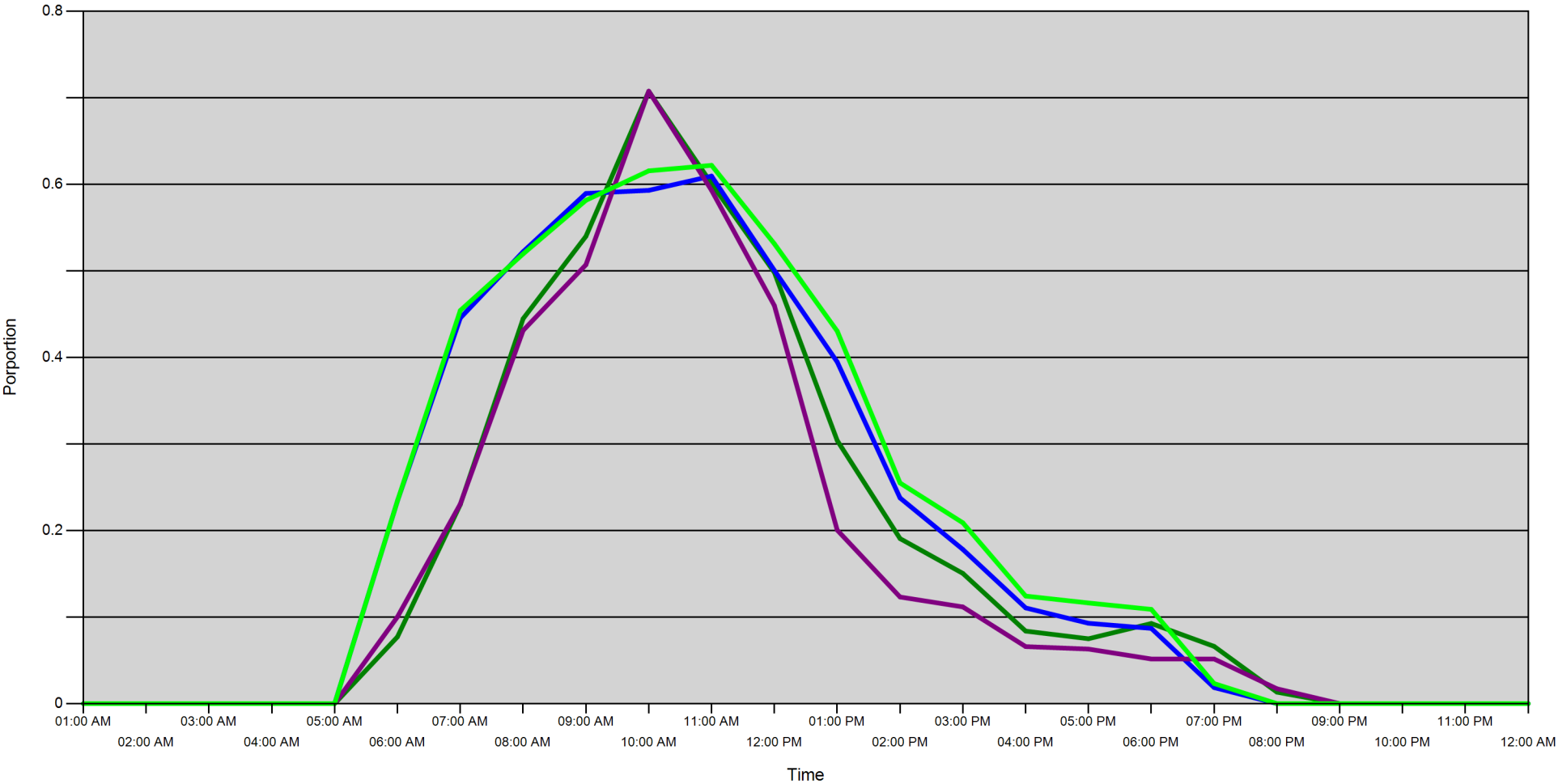
Sport Head Recovery Review

Year	Area	Month	Species	Creel Marked Catch	Creel Mark Rate	Creel Submission Rate	iRec Marked Catch	iRec Mark Rate	iRec Submission Rate	Sport Head recoveries
2017	Area 20	6	Coho	261	100 %	25 %	663	95 %	10 %	64
2017	Area 20	6	Chinook	857	51 %	59 %	1538	49 %	33 %	508

Guided Proprtions Review

Data Source	Year	Month	Area	Interviews/Angler Days	Guided Proportion
Creel Interviews	2017	06	Area 20	335	16 %
iRec Anglers	2017	06	Area 20	6295	14 %
iRec Responses	2017	06	Area 20	155	6 %

Proportion of each day's fishing by hour



Area		01:00 AM	02:00 AM	03:00 AM	04:00 AM	05:00 AM	06:00 AM	07:00 AM	08:00 AM	09:00 AM	10:00 AM	11:00 AM	12:00 PM	01:00 PM	02:00 PM	03:00 PM	04:00 PM	05:00 PM	06:00 PM	07:00 PM	08:00 PM	09:00 PM	10:00 PM	11:00 PM	12:00 AM
20D	Midweek	0	0	0	0	0	0.077	0.23	0.445	0.54	0.708	0.601	0.498	0.304	0.191	0.151	0.084	0.075	0.093	0.066	0.013	0	0	0	0
	Weekend	0	0	0	0	0	0.234	0.446	0.522	0.59	0.593	0.61	0.501	0.395	0.238	0.178	0.111	0.093	0.087	0.019	0	0	0	0	0
20C	Midweek	0	0	0	0	0	0.1	0.231	0.431	0.507	0.708	0.593	0.46	0.201	0.123	0.112	0.066	0.063	0.052	0.052	0.017	0	0	0	0
	Weekend	0	0	0	0	0	0.234	0.454	0.52	0.582	0.616	0.622	0.531	0.431	0.255	0.209	0.124	0.116	0.109	0.023	0	0	0	0	0

Daily Fishing Conditions

		Becher Bay	Flemming	Jock's Dock (Crab Shack)	Pedder Bay
29 May, 2017	Midweek				
30 May, 2017	Midweek			frequent whitecaps	
31 May, 2017	Midweek				
01 June, 2017	Midweek				
02 June, 2017	Midweek				
03 June, 2017	Weekend			frequent whitecaps	
04 June, 2017	Weekend				frequent whitecaps
05 June, 2017	Midweek				
06 June, 2017	Midweek				
07 June, 2017	Midweek			calm/rippled	
08 June, 2017	Midweek				
09 June, 2017	Midweek			choppy	
10 June, 2017	Weekend			calm/rippled	frequent whitecaps
11 June, 2017	Weekend		calm/rippled		
12 June, 2017	Midweek				
13 June, 2017	Midweek				
14 June, 2017	Midweek				calm/rippled
15 June, 2017	Midweek				
16 June, 2017	Midweek				choppy
17 June, 2017	Weekend		choppy	calm/rippled	
18 June, 2017	Weekend	calm/rippled			
19 June, 2017	Midweek	calm/rippled			
20 June, 2017	Midweek				
21 June, 2017	Midweek				
22 June, 2017	Midweek				
23 June, 2017	Midweek				
24 June, 2017	Weekend			choppy	choppy
25 June, 2017	Weekend	choppy			calm/rippled
26 June, 2017	Midweek		frequent whitecaps		
27 June, 2017	Midweek				
28 June, 2017	Midweek			choppy	
29 June, 2017	Midweek				choppy
30 June, 2017	Midweek	frequent whitecaps			
01 July, 2017	Weekend	large swells			frequent whitecaps
02 July, 2017	Weekend				frequent whitecaps
03 July, 2017	Weekend				