

Numbers of Interviews conducted contributing to the area by day and access site

		Becher Bay		Flemming		Jock's Dock (Crab Shack)		Pedder Bay	
		Evening	Morning	Evening	Morning	Evening	Morning	Evening	Morning
29 July, 2017	Weekend				1		17		
30 July, 2017	Weekend								
31 July, 2017	Midweek								16
01 August, 2017	Midweek	6							9
02 August, 2017	Midweek					13			
03 August, 2017	Midweek								
04 August, 2017	Midweek		7						
05 August, 2017	Weekend					16			29
06 August, 2017	Weekend						26	35	
07 August, 2017	Weekend								23
08 August, 2017	Midweek			2					
09 August, 2017	Midweek							25	
10 August, 2017	Midweek								
11 August, 2017	Midweek								
12 August, 2017	Weekend	8		1			17		
13 August, 2017	Weekend								
14 August, 2017	Midweek								
15 August, 2017	Midweek								
16 August, 2017	Midweek							6	
17 August, 2017	Midweek								
18 August, 2017	Midweek								
19 August, 2017	Weekend	7		1					
20 August, 2017	Weekend				1				
21 August, 2017	Midweek					23			
22 August, 2017	Midweek								
23 August, 2017	Midweek						15		
24 August, 2017	Midweek								
25 August, 2017	Midweek								
26 August, 2017	Weekend		20			6			
27 August, 2017	Weekend					23			
28 August, 2017	Midweek						14		
29 August, 2017	Midweek								
30 August, 2017	Midweek								
31 August, 2017	Midweek								
01 September, 2017	Midweek								
02 September, 2017	Weekend								20
03 September, 2017	Weekend								

Daily tally of interviews, catch and effort

Date	Day	Day Type	Area	Average Fishing Conditions	Interviews & Log Trips	Chinook	Coho	Sockeye	Halibut	Observed Fishing	Flight Time	Expanded Fishing
29 July, 2017	Saturday	Weekend	Area 20 (East)	large swells	20	15	1					
30 July, 2017	Sunday	Weekend	Area 20 (East)		2							
31 July, 2017	Monday	Midweek	Area 20 (East)	calm/rippled	18	8		2				
01 August, 2017	Tuesday	Midweek	Area 20 (East)	calm/rippled	17	13	1		1			
02 August, 2017	Wednesday	Midweek	Area 20 (East)	choppy	15	14						
03 August, 2017	Thursday	Midweek	Area 20 (East)		3	5				173	0919	256
04 August, 2017	Friday	Midweek	Area 20 (East)	calm/rippled	10	8						
05 August, 2017	Saturday	Weekend	Area 20 (East)	choppy	48	21	3		1			
06 August, 2017	Sunday	Weekend	Area 20 (East)	calm/rippled	62	23		1				
07 August, 2017	Monday (B.C. Day)	Weekend	Area 20 (East)	choppy	25	6						
08 August, 2017	Tuesday	Midweek	Area 20 (East)	calm/rippled	5	5						
09 August, 2017	Wednesday	Midweek	Area 20 (East)	choppy	27	14	1					
10 August, 2017	Thursday	Midweek	Area 20 (East)		1	2						
11 August, 2017	Friday	Midweek	Area 20 (East)		1	2						
12 August, 2017	Saturday	Weekend	Area 20 (East)	frequent whitecaps	27	16	2					
13 August, 2017	Sunday	Weekend	Area 20 (East)		2	4				175	0918	266
14 August, 2017	Monday	Midweek	Area 20 (East)		2	4				184	0926	272
15 August, 2017	Tuesday	Midweek	Area 20 (East)		1	2						
16 August, 2017	Wednesday	Midweek	Area 20 (East)	large swells	8	8						
17 August, 2017	Thursday	Midweek	Area 20 (East)		2	4						
18 August, 2017	Friday	Midweek	Area 20 (East)		2	4	2					
19 August, 2017	Saturday	Weekend	Area 20 (East)	frequent whitecaps	9	12				338	0924	514
20 August, 2017	Sunday	Weekend	Area 20 (East)	choppy	3	9						
21 August, 2017	Monday	Midweek	Area 20 (East)	calm/rippled	26	60	1					
22 August, 2017	Tuesday	Midweek	Area 20 (East)		2	9						
23 August, 2017	Wednesday	Midweek	Area 20 (East)	frequent whitecaps	16	30				119	0915	176
24 August, 2017	Thursday	Midweek	Area 20 (East)		1	1						
25 August, 2017	Friday	Midweek	Area 20 (East)		1		2					
26 August, 2017	Saturday	Weekend	Area 20 (East)	choppy	29	22	8			405	0925	616
27 August, 2017	Sunday	Weekend	Area 20 (East)	choppy	24	43	13					
28 August, 2017	Monday	Midweek	Area 20 (East)	calm/rippled	15	9	2		1			
29 August, 2017	Tuesday	Midweek	Area 20 (East)		1	6				155	0924	229
30 August, 2017	Wednesday	Midweek	Area 20 (East)		1							
31 August, 2017	Thursday	Midweek	Area 20 (East)		0							
01 September, 2017	Friday	Midweek	Area 20 (East)		0							
02 September, 2017	Saturday	Weekend	Area 20 (East)	choppy	20	13	10					
03 September, 2017	Sunday	Weekend	Area 20 (East)		0					322	1128	562
	Totals	Midweek	Area 20 (East)	choppy	157	200	9		2	158*		233*
	Totals	Weekend	Area 20 (East)	choppy	229	156	26	1	1	306*		465*

* Average number of boats observed and Expanded

Simple area based cpue (catch per boat trip) expansion

				CPUE				Retained			
Day Type	Average Expanded Boats	Number of Days	Total estimated Effort	Chinook	Coho	Sockeye	Halibut	Chinook	Coho	Sockeye	Halibut
Midweek	233	22	5126	1.2739	0.0573		0.0127	6530	294		65
Weekend	465	9	4185	0.6812	0.1135	0.0044	0.0044	2851	475	18	18

Recent years estimates of retained catch and effort

Year	Area	Month	Total Effort	Chinook Kept	Coho Kept	Sockeye Kept	Halibut Kept
2012	Area 20 (East)	August	7181	3912	2831	38	38
2013	Area 20 (East)	August	10794	10481	2582	166	188
2014	Area 20 (East)	August	9305	3552	2311	1505	24
2015	Area 20 (East)	August	9723	11388	1802	148	19
2016	Area 20 (East)	August	8726	5486	2054		150
2017	Area 20 (East)	August	9046	7170	838	17	99
5-Yr Avg	Area 20 (East)	August	9146	6964	2316	464	84

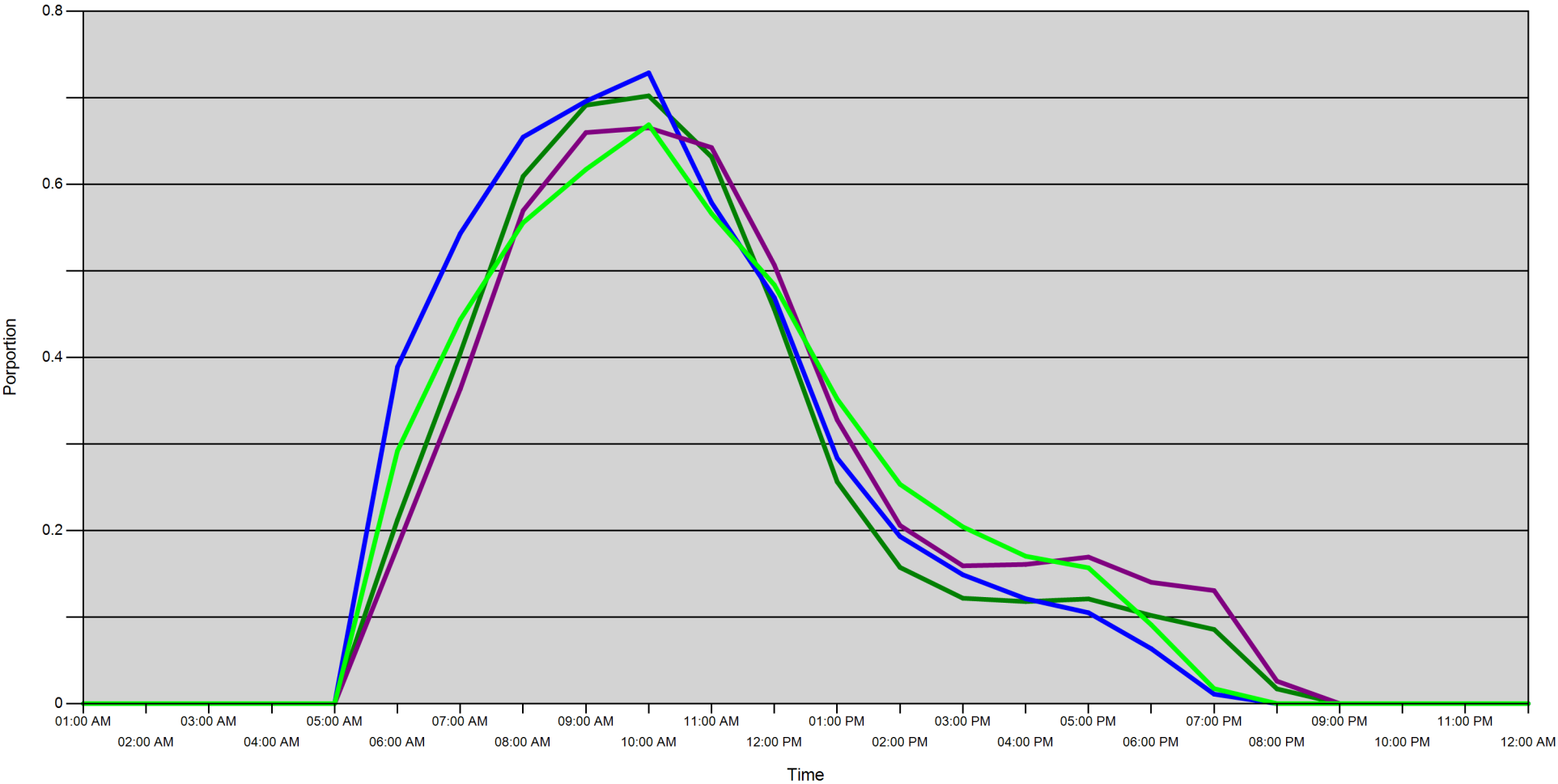
Sport Head Recovery Review

Year	Area	Month	Species	Creel Marked Catch	Creel Mark Rate	Creel Submission Rate	iRec Marked Catch	iRec Mark Rate	iRec Submission Rate	Sport Head recoveries
2017	Area 20	8	Coho	858	92 %	24 %	1751	89 %	12 %	208
2017	Area 20	8	Chinook	2747	20 %	55 %	4186	28 %	36 %	1518

Guided Proprtions Review

Data Source	Year	Month	Area	Interviews/Angler Days	Guided Proportion
Creel Interviews	2017	08	Area 20	1029	13 %
iRec Anglers	2017	08	Area 20	21730	13 %
iRec Responses	2017	08	Area 20	370	11 %

Proportion of each day's fishing by hour



Area		01:00 AM	02:00 AM	03:00 AM	04:00 AM	05:00 AM	06:00 AM	07:00 AM	08:00 AM	09:00 AM	10:00 AM	11:00 AM	12:00 PM	01:00 PM	02:00 PM	03:00 PM	04:00 PM	05:00 PM	06:00 PM	07:00 PM	08:00 PM	09:00 PM	10:00 PM	11:00 PM	12:00 AM
20D	Midweek	0	0	0	0	0	0.212	0.405	0.609	0.692	0.702	0.632	0.455	0.256	0.157	0.122	0.118	0.121	0.102	0.086	0.017	0	0	0	0
	Weekend	0	0	0	0	0	0.389	0.543	0.655	0.696	0.729	0.579	0.469	0.284	0.193	0.149	0.121	0.105	0.063	0.011	0	0	0	0	0
20C	Midweek	0	0	0	0	0	0.182	0.364	0.57	0.66	0.665	0.643	0.507	0.328	0.206	0.159	0.161	0.169	0.14	0.131	0.026	0	0	0	0
	Weekend	0	0	0	0	0	0.292	0.444	0.556	0.617	0.669	0.566	0.484	0.352	0.253	0.204	0.17	0.157	0.091	0.017	0	0	0	0	0

Daily Fishing Conditions

		Becher Bay	Flemming	Jock's Dock (Crab Shack)	Pedder Bay
29 July, 2017	Weekend		choppy	large swells	
30 July, 2017	Weekend				
31 July, 2017	Midweek				calm/rippled
01 August, 2017	Midweek	calm/rippled			calm/rippled
02 August, 2017	Midweek			choppy	
03 August, 2017	Midweek				
04 August, 2017	Midweek	calm/rippled			
05 August, 2017	Weekend			frequent whitecaps	choppy
06 August, 2017	Weekend			calm/rippled	choppy
07 August, 2017	Weekend				choppy
08 August, 2017	Midweek		calm/rippled		
09 August, 2017	Midweek				choppy
10 August, 2017	Midweek				
11 August, 2017	Midweek				
12 August, 2017	Weekend	frequent whitecaps	frequent whitecaps	frequent whitecaps	
13 August, 2017	Weekend				
14 August, 2017	Midweek				
15 August, 2017	Midweek				
16 August, 2017	Midweek				large swells
17 August, 2017	Midweek				
18 August, 2017	Midweek				
19 August, 2017	Weekend	frequent whitecaps	frequent whitecaps		
20 August, 2017	Weekend		choppy		
21 August, 2017	Midweek			calm/rippled	
22 August, 2017	Midweek				
23 August, 2017	Midweek			frequent whitecaps	
24 August, 2017	Midweek				
25 August, 2017	Midweek				
26 August, 2017	Weekend	choppy		choppy	
27 August, 2017	Weekend			choppy	
28 August, 2017	Midweek			calm/rippled	
29 August, 2017	Midweek				
30 August, 2017	Midweek				
31 August, 2017	Midweek				
01 September, 2017	Midweek				
02 September, 2017	Weekend				choppy
03 September, 2017	Weekend				