

Numbers of Interviews conducted contributing to the area by day and access site

		Cattle Point	Flemming	Pedder Bay
		Mid Day	Mid Day	Mid Day
29 January, 2018	Midweek			
30 January, 2018	Midweek			
31 January, 2018	Midweek			
01 February, 2018	Midweek			
02 February, 2018	Midweek			
03 February, 2018	Weekend	5	8	
04 February, 2018	Weekend			
05 February, 2018	Midweek			
06 February, 2018	Midweek	2		
07 February, 2018	Midweek			
08 February, 2018	Midweek			
09 February, 2018	Midweek			
10 February, 2018	Weekend			
11 February, 2018	Weekend			1
12 February, 2018	Midweek		12	
13 February, 2018	Midweek			
14 February, 2018	Midweek			
15 February, 2018	Midweek			1
16 February, 2018	Midweek			
17 February, 2018	Weekend			
18 February, 2018	Weekend			
19 February, 2018	Midweek			
20 February, 2018	Midweek			
21 February, 2018	Midweek		1	
22 February, 2018	Midweek			
23 February, 2018	Midweek			
24 February, 2018	Weekend			
25 February, 2018	Weekend			
26 February, 2018	Midweek			
27 February, 2018	Midweek		1	
28 February, 2018	Midweek			
01 March, 2018	Midweek		4	
02 March, 2018	Midweek			
03 March, 2018	Weekend	7		

Daily tally of interviews, catch and effort

Date	Day	Day Type	Area	Average Fishing Conditions	Interviews & Log Trips	Chinook	Coho	Sockeye	Halibut	Observed Fishing	Flight Time	Expanded Fishing
29 January, 2018	Monday	Midweek	Area 19 (JDF)		0							
30 January, 2018	Tuesday	Midweek	Area 19 (JDF)		0							
31 January, 2018	Wednesday	Midweek	Area 19 (JDF)		0							
01 February, 2018	Thursday	Midweek	Area 19 (JDF)		0							
02 February, 2018	Friday	Midweek	Area 19 (JDF)		0							
03 February, 2018	Saturday	Weekend	Area 19 (JDF)	choppy	13	18						
04 February, 2018	Sunday	Weekend	Area 19 (JDF)		0							
05 February, 2018	Monday	Midweek	Area 19 (JDF)		0							
06 February, 2018	Tuesday	Midweek	Area 19 (JDF)	choppy	2							
07 February, 2018	Wednesday	Midweek	Area 19 (JDF)		0							
08 February, 2018	Thursday	Midweek	Area 19 (JDF)		0							
09 February, 2018	Friday	Midweek	Area 19 (JDF)		0							
10 February, 2018	Saturday	Weekend	Area 19 (JDF)		0					55	1125	63
11 February, 2018	Sunday	Weekend	Area 19 (JDF)	calm/rippled	1	1						
12 February, 2018	Monday	Midweek	Area 19 (JDF)	choppy	12	2						
13 February, 2018	Tuesday	Midweek	Area 19 (JDF)		0					12	1127	15
14 February, 2018	Wednesday	Midweek	Area 19 (JDF)		0							
15 February, 2018	Thursday	Midweek	Area 19 (JDF)	calm/rippled	1							
16 February, 2018	Friday	Midweek	Area 19 (JDF)		0							
17 February, 2018	Saturday	Weekend	Area 19 (JDF)		0							
18 February, 2018	Sunday	Weekend	Area 19 (JDF)		0							
19 February, 2018	Monday	Midweek	Area 19 (JDF)		0							
20 February, 2018	Tuesday	Midweek	Area 19 (JDF)		0					3	1129	3
21 February, 2018	Wednesday	Midweek	Area 19 (JDF)	choppy	1							
22 February, 2018	Thursday	Midweek	Area 19 (JDF)		0							
23 February, 2018	Friday	Midweek	Area 19 (JDF)		0							
24 February, 2018	Saturday	Weekend	Area 19 (JDF)		0					6	1127	7
25 February, 2018	Sunday	Weekend	Area 19 (JDF)		0					0	1120	0
26 February, 2018	Monday	Midweek	Area 19 (JDF)		0							
27 February, 2018	Tuesday	Midweek	Area 19 (JDF)	frequent whitecaps	1					0	1127	0
28 February, 2018	Wednesday	Midweek	Area 19 (JDF)		0							
01 March, 2018	Thursday	Midweek	Area 19 (JDF)	choppy	4					15	1131	18
02 March, 2018	Friday	Midweek	Area 19 (JDF)		0							
03 March, 2018	Saturday	Weekend	Area 19 (JDF)	choppy	7	5						
	Totals	Midweek	Area 19 (JDF)	choppy	17	2				5*		6*
	Totals	Weekend	Area 19 (JDF)	choppy	14	19				20*		23*

* Average number of boats observed and Expanded

Simple area based cpue (catch per boat trip) expansion

				CPUE				Retained			
Day Type	Average Expanded Boats	Number of Days	Total estimated Effort	Chinook	Coho	Sockeye	Halibut	Chinook	Coho	Sockeye	Halibut
Midweek	6	20	120	0.1177				14			
Weekend	23	8	184	1.3571				250			

Recent years estimates of retained catch and effort

Year	Area	Month	Total Effort	Chinook Kept	Coho Kept	Sockeye Kept	Halibut Kept
2014	Area 19 (JDF)	February	154	87			51
2015	Area 19 (JDF)	February	753	254			333
2018	Area 19 (JDF)	February	320	323			
5-Yr Avg	Area 19 (JDF)	February	454	171			192

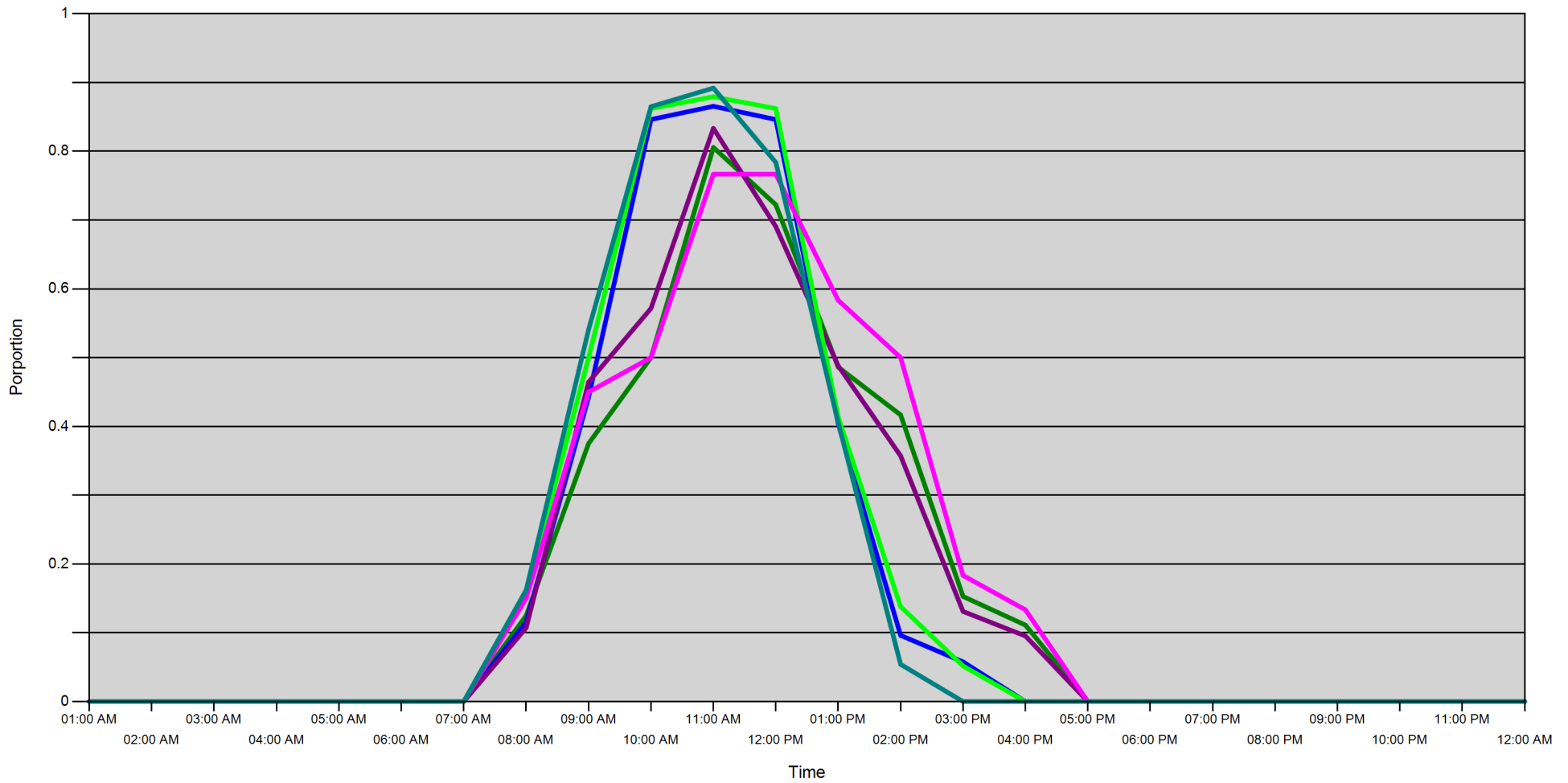
Sport Head Recovery Review

Year	Area	Month	Species	Creel Marked Catch	Creel Mark Rate	Creel Submission Rate	iRec Marked Catch	iRec Mark Rate	iRec Submission Rate	Sport Head recoveries
2018	Area 19 (JDF)	2	Chinook	247	76 %	9 %	96	25 %	23 %	22

Guided Proprtions Review

Data Source	Year	Month	Area	Interviews/Angler Days	Guided Proportion
Creel Interivews	2018	02	Area 19 (JDF)	31	3 %
iRec Anglers	2018	02	Area 19 (JDF)	606	20 %
iRec Responses	2018	02	Area 19 (JDF)	8	13 %

Proportion of each day's fishing by hour



19D - Midweek 19D - Weekend 19C - Midweek 19C - Weekend 19E - Midweek 19E - Weekend

[illegible]

Daily Fishing Conditions

		Cattle Point	Flemming	Pedder Bay
29 January, 2018	Midweek			
30 January, 2018	Midweek			
31 January, 2018	Midweek			
01 February, 2018	Midweek			
02 February, 2018	Midweek			
03 February, 2018	Weekend	choppy	choppy	
04 February, 2018	Weekend			
05 February, 2018	Midweek			
06 February, 2018	Midweek	choppy		
07 February, 2018	Midweek			
08 February, 2018	Midweek			
09 February, 2018	Midweek			
10 February, 2018	Weekend			
11 February, 2018	Weekend			calm/rippled
12 February, 2018	Midweek		choppy	
13 February, 2018	Midweek			
14 February, 2018	Midweek			
15 February, 2018	Midweek			calm/rippled
16 February, 2018	Midweek			
17 February, 2018	Weekend			
18 February, 2018	Weekend			
19 February, 2018	Midweek			
20 February, 2018	Midweek			
21 February, 2018	Midweek		choppy	
22 February, 2018	Midweek			
23 February, 2018	Midweek			
24 February, 2018	Weekend			
25 February, 2018	Weekend			
26 February, 2018	Midweek			
27 February, 2018	Midweek		frequent whitecaps	
28 February, 2018	Midweek			
01 March, 2018	Midweek		choppy	
02 March, 2018	Midweek			
03 March, 2018	Weekend	choppy		