

Numbers of Interviews conducted contributing to the area by day and access site

		Cattle Point		Flemming		Pedder Bay	
		Evening	Morning	Evening	Morning	Evening	Morning
29 May, 2018	Midweek						
30 May, 2018	Midweek						
31 May, 2018	Midweek						
01 June, 2018	Midweek						
02 June, 2018	Weekend						
03 June, 2018	Weekend						3
04 June, 2018	Midweek						
05 June, 2018	Midweek						
06 June, 2018	Midweek						
07 June, 2018	Midweek						2
08 June, 2018	Midweek			3			
09 June, 2018	Weekend						
10 June, 2018	Weekend			3			
11 June, 2018	Midweek						
12 June, 2018	Midweek						
13 June, 2018	Midweek				1		
14 June, 2018	Midweek		2				
15 June, 2018	Midweek						
16 June, 2018	Weekend				20		
17 June, 2018	Weekend		13			5	
18 June, 2018	Midweek						
19 June, 2018	Midweek					2	
20 June, 2018	Midweek	5					
21 June, 2018	Midweek						
22 June, 2018	Midweek				1		
23 June, 2018	Weekend			6			
24 June, 2018	Weekend	12					
25 June, 2018	Midweek						
26 June, 2018	Midweek			4			
27 June, 2018	Midweek						
28 June, 2018	Midweek						
29 June, 2018	Midweek						
30 June, 2018	Weekend						1
01 July, 2018	Weekend						
02 July, 2018	Weekend						
03 July, 2018	Midweek						

Daily tally of interviews, catch and effort

Date	Day	Day Type	Area	Average Fishing Conditions	Interviews & Log Trips	Chinook	Coho	Sockeye	Halibut	Observed Fishing	Flight Time	Expanded Fishing
29 May, 2018	Tuesday	Midweek	Area 19 (JDF)		0							
30 May, 2018	Wednesday	Midweek	Area 19 (JDF)		1	1						
31 May, 2018	Thursday	Midweek	Area 19 (JDF)		0							
01 June, 2018	Friday	Midweek	Area 19 (JDF)		0							
02 June, 2018	Saturday	Weekend	Area 19 (JDF)		1	1				56	1049	114
03 June, 2018	Sunday	Weekend	Area 19 (JDF)	frequent whitecaps	3				1			
04 June, 2018	Monday	Midweek	Area 19 (JDF)		0							
05 June, 2018	Tuesday	Midweek	Area 19 (JDF)		0							
06 June, 2018	Wednesday	Midweek	Area 19 (JDF)		1					60	1053	143
07 June, 2018	Thursday	Midweek	Area 19 (JDF)	choppy	2				2			
08 June, 2018	Friday	Midweek	Area 19 (JDF)	choppy	4	1						
09 June, 2018	Saturday	Weekend	Area 19 (JDF)		0					50	1049	101
10 June, 2018	Sunday	Weekend	Area 19 (JDF)	frequent whitecaps	3							
11 June, 2018	Monday	Midweek	Area 19 (JDF)		0							
12 June, 2018	Tuesday	Midweek	Area 19 (JDF)		1	1				34	1051	82
13 June, 2018	Wednesday	Midweek	Area 19 (JDF)	frequent whitecaps	1							
14 June, 2018	Thursday	Midweek	Area 19 (JDF)	choppy	2	3						
15 June, 2018	Friday	Midweek	Area 19 (JDF)		1	2						
16 June, 2018	Saturday	Weekend	Area 19 (JDF)	calm/rippled	20	6				48	1052	97
17 June, 2018	Sunday	Weekend	Area 19 (JDF)	calm/rippled	18	4						
18 June, 2018	Monday	Midweek	Area 19 (JDF)		0							
19 June, 2018	Tuesday	Midweek	Area 19 (JDF)	choppy	2							
20 June, 2018	Wednesday	Midweek	Area 19 (JDF)	calm/rippled	6					35	1107	69
21 June, 2018	Thursday	Midweek	Area 19 (JDF)		0							
22 June, 2018	Friday	Midweek	Area 19 (JDF)	choppy	1							
23 June, 2018	Saturday	Weekend	Area 19 (JDF)	frequent whitecaps	6	1			1			
24 June, 2018	Sunday	Weekend	Area 19 (JDF)	choppy	12	2				73	1110	145
25 June, 2018	Monday	Midweek	Area 19 (JDF)		0					4	1117	8
26 June, 2018	Tuesday	Midweek	Area 19 (JDF)	frequent whitecaps	4							
27 June, 2018	Wednesday	Midweek	Area 19 (JDF)		0							
28 June, 2018	Thursday	Midweek	Area 19 (JDF)		0							
29 June, 2018	Friday	Midweek	Area 19 (JDF)		1		1					
30 June, 2018	Saturday	Weekend	Area 19 (JDF)	frequent whitecaps	1							
01 July, 2018	Sunday	Weekend	Area 19 (JDF)		0					21	1015	42
02 July, 2018	Monday (Canada Day)	Weekend	Area 19 (JDF)		0							
03 July, 2018	Tuesday	Midweek	Area 19 (JDF)		1							
	Totals	Midweek	Area 19 (JDF)	choppy	26	7	1		2	33*		76*
	Totals	Weekend	Area 19 (JDF)	choppy	64	14			2	57*		114*

* Average number of boats observed and Expanded

Simple area based cpue (catch per boat trip) expansion

				CPUE				Retained			
Day Type	Average Expanded Boats	Number of Days	Total estimated Effort	Chinook	Coho	Sockeye	Halibut	Chinook	Coho	Sockeye	Halibut
Midweek	76	21	1596	0.2692	0.0385		0.0769	430	61		123
Weekend	114	9	1026	0.2188			0.0313	224			32

Recent years estimates of retained catch and effort

Year	Area	Month	Total Effort	Chinook Kept	Coho Kept	Sockeye Kept	Halibut Kept
2013	Area 19 (JDF)	June	2240	597	89		1019
2014	Area 19 (JDF)	June	1656	264			684
2015	Area 19 (JDF)	June	1555	425			68
2016	Area 19 (JDF)	June	2004	430			133
2017	Area 19 (JDF)	June	840	212			214
2018	Area 19 (JDF)	June	2391	266	1		68
5-Yr Avg	Area 19 (JDF)	June	1659	386	89		424

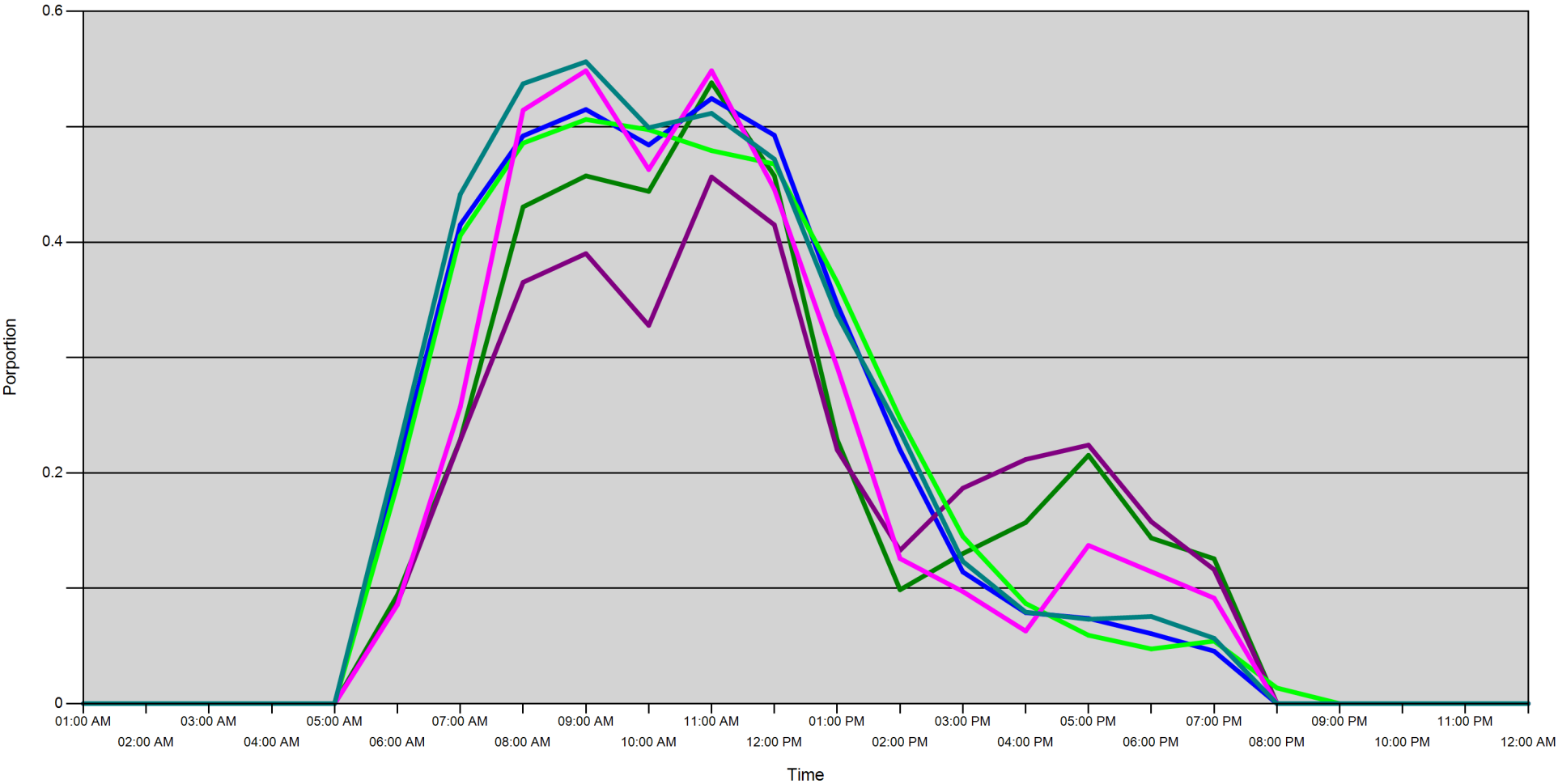
Sport Head Recovery Review

Year	Area	Month	Species	Creel Marked Catch	Creel Mark Rate	Creel Submission Rate	iRec Marked Catch	iRec Mark Rate	iRec Submission Rate	Sport Head recoveries
2018	Area 19 (JDF)	6	Coho	1	100 %	100 %	96	100 %	1 %	1
2018	Area 19 (JDF)	6	Chinook	118	47 %	49 %	525	65 %	11 %	58

Guided Proprtions Review

Data Source	Year	Month	Area	Interviews/Angler Days	Guided Proportion
Creel Interivews	2018	06	Area 19 (JDF)	90	4 %
iRec Anglers	2018	06	Area 19 (JDF)	2645	21 %
iRec Responses	2018	06	Area 19 (JDF)	70	0 %

Proportion of each day's fishing by hour



Area		01:00 AM	02:00 AM	03:00 AM	04:00 AM	05:00 AM	06:00 AM	07:00 AM	08:00 AM	09:00 AM	10:00 AM	11:00 AM	12:00 PM	01:00 PM	02:00 PM	03:00 PM	04:00 PM	05:00 PM	06:00 PM	07:00 PM	08:00 PM	09:00 PM	10:00 PM	11:00 PM	12:00 AM
19D	Midweek	0	0	0	0	0	0.094	0.229	0.43	0.457	0.444	0.538	0.457	0.229	0.099	0.13	0.157	0.215	0.144	0.126	0	0	0	0	0
	Weekend	0	0	0	0	0	0.204	0.415	0.492	0.515	0.484	0.524	0.493	0.346	0.22	0.114	0.079	0.074	0.061	0.045	0	0	0	0	0
19C	Midweek	0	0	0	0	0	0.087	0.228	0.365	0.39	0.328	0.456	0.415	0.22	0.133	0.187	0.212	0.224	0.158	0.116	0	0	0	0	0
	Weekend	0	0	0	0	0	0.19	0.406	0.486	0.506	0.497	0.479	0.468	0.365	0.247	0.145	0.087	0.059	0.047	0.054	0.014	0	0	0	0
19E	Midweek	0	0	0	0	0	0.086	0.257	0.514	0.549	0.463	0.549	0.446	0.291	0.126	0.097	0.063	0.137	0.114	0.091	0	0	0	0	0
	Weekend	0	0	0	0	0	0.217	0.441	0.537	0.556	0.499	0.512	0.472	0.337	0.236	0.123	0.079	0.073	0.076	0.057	0	0	0	0	0

Daily Fishing Conditions

		Cattle Point	Flemming	Pedder Bay
29 May, 2018	Midweek			
30 May, 2018	Midweek			
31 May, 2018	Midweek			
01 June, 2018	Midweek			
02 June, 2018	Weekend			
03 June, 2018	Weekend			frequent whitecaps
04 June, 2018	Midweek			
05 June, 2018	Midweek			
06 June, 2018	Midweek			
07 June, 2018	Midweek			choppy
08 June, 2018	Midweek		choppy	
09 June, 2018	Weekend			
10 June, 2018	Weekend		frequent whitecaps	
11 June, 2018	Midweek			
12 June, 2018	Midweek			
13 June, 2018	Midweek		frequent whitecaps	
14 June, 2018	Midweek	choppy		
15 June, 2018	Midweek			
16 June, 2018	Weekend		calm/rippled	
17 June, 2018	Weekend	calm/rippled		calm/rippled
18 June, 2018	Midweek			
19 June, 2018	Midweek			choppy
20 June, 2018	Midweek	calm/rippled		
21 June, 2018	Midweek			
22 June, 2018	Midweek		choppy	
23 June, 2018	Weekend		frequent whitecaps	
24 June, 2018	Weekend	choppy		
25 June, 2018	Midweek			
26 June, 2018	Midweek		frequent whitecaps	
27 June, 2018	Midweek			
28 June, 2018	Midweek			
29 June, 2018	Midweek			
30 June, 2018	Weekend			frequent whitecaps
01 July, 2018	Weekend			
02 July, 2018	Weekend			
03 July, 2018	Midweek			