

Numbers of Interviews conducted contributing to the area by day and access site

		Becher Bay		Flemming		Jock's Dock (Crab Shack)		Pedder Bay	
		Evening	Morning	Evening	Morning	Evening	Morning	Evening	Morning
29 July, 2018	Weekend	11				13			
30 July, 2018	Midweek								
31 July, 2018	Midweek								
01 August, 2018	Midweek								
02 August, 2018	Midweek								
03 August, 2018	Midweek								
04 August, 2018	Weekend						18		
05 August, 2018	Weekend		17						24
06 August, 2018	Weekend							21	
07 August, 2018	Midweek								
08 August, 2018	Midweek		19		5				
09 August, 2018	Midweek								
10 August, 2018	Midweek								16
11 August, 2018	Weekend		24	1					
12 August, 2018	Weekend			3					
13 August, 2018	Midweek						16		
14 August, 2018	Midweek								
15 August, 2018	Midweek					21			
16 August, 2018	Midweek								
17 August, 2018	Midweek							14	
18 August, 2018	Weekend				2				
19 August, 2018	Weekend					10		34	
20 August, 2018	Midweek								
21 August, 2018	Midweek				1				
22 August, 2018	Midweek								
23 August, 2018	Midweek						8		
24 August, 2018	Midweek								
25 August, 2018	Weekend					16			
26 August, 2018	Weekend	5							
27 August, 2018	Midweek					17			
28 August, 2018	Midweek							28	
29 August, 2018	Midweek								
30 August, 2018	Midweek								
31 August, 2018	Midweek	1							
01 September, 2018	Weekend		23						
02 September, 2018	Weekend								20
03 September, 2018	Weekend								

Daily tally of interviews, catch and effort

Date	Day	Day Type	Area	Average Fishing Conditions	Interviews & Log Trips	Chinook	Coho	Sockeye	Halibut	Observed Fishing	Flight Time	Expanded Fishing
29 July, 2018	Sunday	Weekend	Area 20 (East)	choppy	26	15						
30 July, 2018	Monday	Midweek	Area 20 (East)		1	1				81	0959	126
31 July, 2018	Tuesday	Midweek	Area 20 (East)		2	7						
01 August, 2018	Wednesday	Midweek	Area 20 (East)		2	3		1		53	1050	86
02 August, 2018	Thursday	Midweek	Area 20 (East)		2	4						
03 August, 2018	Friday	Midweek	Area 20 (East)		1	4						
04 August, 2018	Saturday	Weekend	Area 20 (East)	choppy	20	15		46				
05 August, 2018	Sunday	Weekend	Area 20 (East)	choppy	42	17		11				
06 August, 2018	Monday (B.C. Day)	Weekend	Area 20 (East)	frequent whitecaps	24	14		7				
07 August, 2018	Tuesday	Midweek	Area 20 (East)		2	2	1	2				
08 August, 2018	Wednesday	Midweek	Area 20 (East)	calm/rippled	28	42	1	13				
09 August, 2018	Thursday	Midweek	Area 20 (East)		3	3		10				
10 August, 2018	Friday	Midweek	Area 20 (East)	calm/rippled	18	16	2	8				
11 August, 2018	Saturday	Weekend	Area 20 (East)	choppy	26	35	1	13				
12 August, 2018	Sunday	Weekend	Area 20 (East)	calm/rippled	6	5	1	10		258	1048	410
13 August, 2018	Monday	Midweek	Area 20 (East)	choppy	17	14	2	55		172	1056	359
14 August, 2018	Tuesday	Midweek	Area 20 (East)		3	5		4				
15 August, 2018	Wednesday	Midweek	Area 20 (East)	calm/rippled	22	32	1	30				
16 August, 2018	Thursday	Midweek	Area 20 (East)		2	3		3		83	1056	173
17 August, 2018	Friday	Midweek	Area 20 (East)	choppy	16	6	2	10				
18 August, 2018	Saturday	Weekend	Area 20 (East)	calm/rippled	5	7						
19 August, 2018	Sunday	Weekend	Area 20 (East)	calm/rippled	48	36	2	12	2	279	1054	525
20 August, 2018	Monday	Midweek	Area 20 (East)		2	4						
21 August, 2018	Tuesday	Midweek	Area 20 (East)	calm/rippled	3	6		3				
22 August, 2018	Wednesday	Midweek	Area 20 (East)		4	9		1				
23 August, 2018	Thursday	Midweek	Area 20 (East)	choppy	10	16	1	3				
24 August, 2018	Friday	Midweek	Area 20 (East)		1	4		1		177	1053	289
25 August, 2018	Saturday	Weekend	Area 20 (East)	calm/rippled	18	33	3	2				
26 August, 2018	Sunday	Weekend	Area 20 (East)	choppy	6	4		1		189	1045	300
27 August, 2018	Monday	Midweek	Area 20 (East)	calm/rippled	18	43		1				
28 August, 2018	Tuesday	Midweek	Area 20 (East)	calm/rippled	30	17	7	3				
29 August, 2018	Wednesday	Midweek	Area 20 (East)		0					68	1046	111
30 August, 2018	Thursday	Midweek	Area 20 (East)		2	1						
31 August, 2018	Friday	Midweek	Area 20 (East)	frequent whitecaps	3	8						
01 September, 2018	Saturday	Weekend	Area 20 (East)	choppy	25	15	5	1		220	1034	350
02 September, 2018	Sunday	Weekend	Area 20 (East)	choppy	20	2	2					
03 September, 2018	Monday (Labour Day)	Weekend	Area 20 (East)		0							
	Totals	Midweek	Area 20 (East)	choppy	189	242	17	148		111*		204*
	Totals	Weekend	Area 20 (East)	choppy	195	166	7	102	2	242*		412*

* Average number of boats observed and Expanded

Simple area based cpue (catch per boat trip) expansion

				CPUE				Retained			
Day Type	Average Expanded Boats	Number of Days	Total estimated Effort	Chinook	Coho	Sockeye	Halibut	Chinook	Coho	Sockeye	Halibut
Midweek	204	22	4488	1.2804	0.09	0.7831		5747	404	3514	
Weekend	412	9	3708	0.8513	0.0359	0.5231	0.0103	3157	133	1940	38

Recent years estimates of retained catch and effort

Year	Area	Month	Total Effort	Chinook Kept	Coho Kept	Sockeye Kept	Halibut Kept
2013	Area 20 (East)	August	10794	10481	2582	166	188
2014	Area 20 (East)	August	9305	3552	2311	1505	24
2015	Area 20 (East)	August	9723	11388	1802	148	19
2016	Area 20 (East)	August	8726	5486	2054		150
2017	Area 20 (East)	August	9046	7170	838	17	99
2018	Area 20 (East)	August	9029	8702	572	4894	49
5-Yr Avg	Area 20 (East)	August	9519	7615	1917	459	96

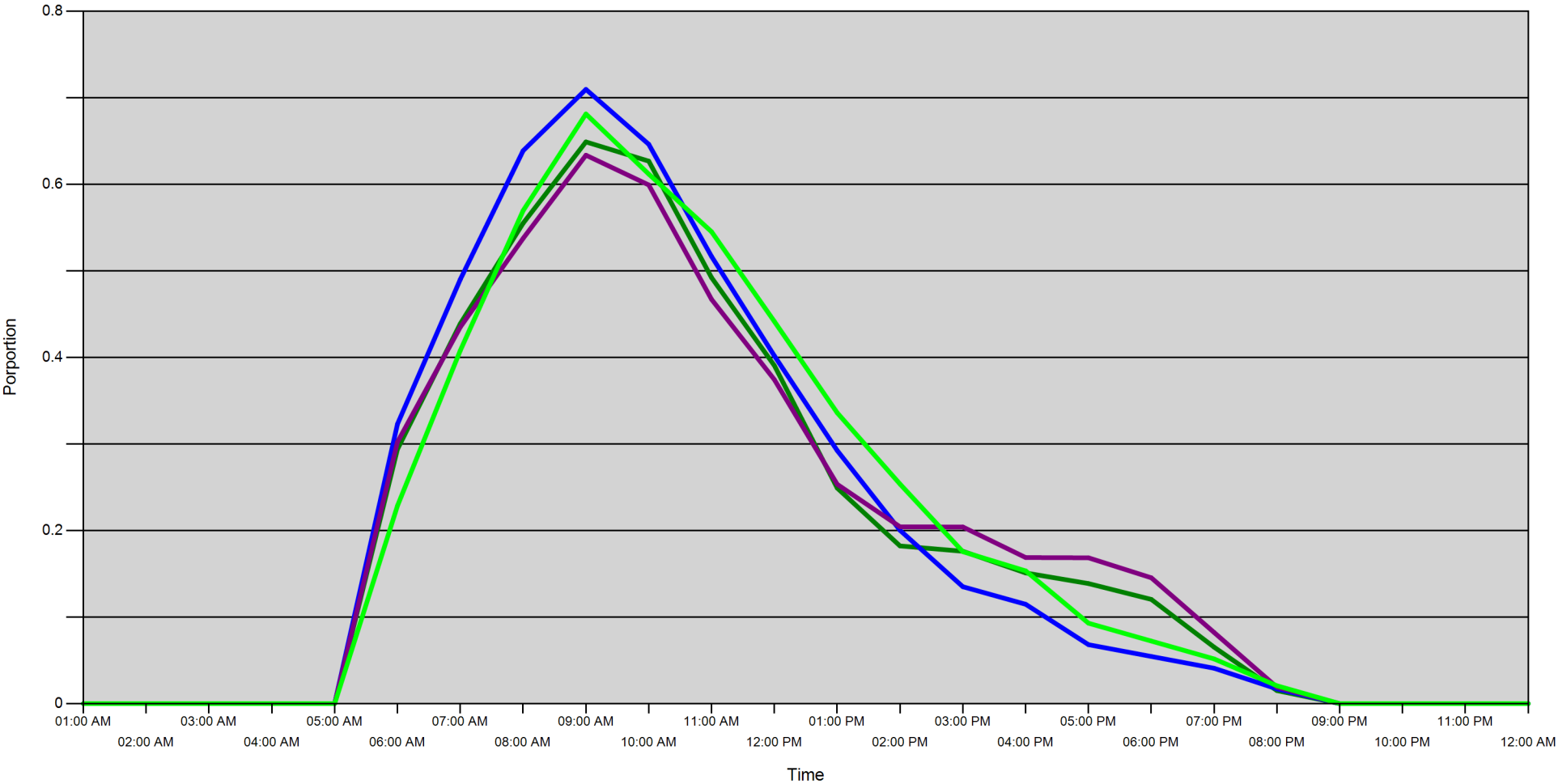
Sport Head Recovery Review

Year	Area	Month	Species	Creel Marked Catch	Creel Mark Rate	Creel Submission Rate	iRec Marked Catch	iRec Mark Rate	iRec Submission Rate	Sport Head recoveries
2018	Area 20	8	Coho	1674	93 %	13 %	1295	84 %	17 %	218
2018	Area 20	8	Chinook	3333	29 %	31 %	3165	37 %	33 %	1032

Guided Proprtions Review

Data Source	Year	Month	Area	Interviews/Angler Days	Guided Proportion
Creel Interviews	2018	08	Area 20	741	6 %
iRec Anglers	2018	08	Area 20	17540	15 %
iRec Responses	2018	08	Area 20	458	5 %

Proportion of each day's fishing by hour



Area		01:00 AM	02:00 AM	03:00 AM	04:00 AM	05:00 AM	06:00 AM	07:00 AM	08:00 AM	09:00 AM	10:00 AM	11:00 AM	12:00 PM	01:00 PM	02:00 PM	03:00 PM	04:00 PM	05:00 PM	06:00 PM	07:00 PM	08:00 PM	09:00 PM	10:00 PM	11:00 PM	12:00 AM
20D	Midweek	0	0	0	0	0	0.294	0.439	0.555	0.649	0.627	0.492	0.391	0.249	0.182	0.176	0.151	0.139	0.12	0.065	0.015	0	0	0	0
	Weekend	0	0	0	0	0	0.323	0.49	0.639	0.71	0.646	0.517	0.402	0.292	0.2	0.135	0.115	0.068	0.055	0.041	0.017	0	0	0	0
20C	Midweek	0	0	0	0	0	0.302	0.435	0.538	0.634	0.599	0.467	0.374	0.253	0.204	0.204	0.169	0.169	0.145	0.082	0.019	0	0	0	0
	Weekend	0	0	0	0	0	0.229	0.408	0.57	0.681	0.612	0.545	0.442	0.336	0.254	0.176	0.153	0.093	0.072	0.052	0.021	0	0	0	0

Daily Fishing Conditions

		Becher Bay	Flemming	Jock's Dock (Crab Shack)	Pedder Bay
29 July, 2018	Weekend	calm/rippled		choppy	
30 July, 2018	Midweek				
31 July, 2018	Midweek				
01 August, 2018	Midweek				
02 August, 2018	Midweek				
03 August, 2018	Midweek				
04 August, 2018	Weekend			choppy	
05 August, 2018	Weekend	choppy			choppy
06 August, 2018	Weekend				frequent whitecaps
07 August, 2018	Midweek				
08 August, 2018	Midweek	calm/rippled	choppy		
09 August, 2018	Midweek				
10 August, 2018	Midweek				calm/rippled
11 August, 2018	Weekend	choppy	choppy		
12 August, 2018	Weekend		calm/rippled		
13 August, 2018	Midweek			choppy	
14 August, 2018	Midweek				
15 August, 2018	Midweek			calm/rippled	
16 August, 2018	Midweek				
17 August, 2018	Midweek				choppy
18 August, 2018	Weekend		calm/rippled		
19 August, 2018	Weekend			calm/rippled	calm/rippled
20 August, 2018	Midweek				
21 August, 2018	Midweek		calm/rippled		
22 August, 2018	Midweek				
23 August, 2018	Midweek			choppy	
24 August, 2018	Midweek				
25 August, 2018	Weekend			calm/rippled	
26 August, 2018	Weekend	choppy			
27 August, 2018	Midweek			calm/rippled	
28 August, 2018	Midweek				calm/rippled
29 August, 2018	Midweek				
30 August, 2018	Midweek				
31 August, 2018	Midweek	frequent whitecaps			
01 September, 2018	Weekend	choppy			
02 September, 2018	Weekend				choppy
03 September, 2018	Weekend				