

Numbers of Interviews conducted contributing to the area by day and access site

		Becher Bay		Flemming		Jock's Dock (Crab Shack)		Pedder Bay	
		Evening	Morning	Evening	Morning	Evening	Morning	Evening	Morning
29 August, 2018	Midweek								
30 August, 2018	Midweek								
31 August, 2018	Midweek	1							
01 September, 2018	Weekend		23						
02 September, 2018	Weekend								20
03 September, 2018	Weekend								
04 September, 2018	Midweek	12							
05 September, 2018	Midweek								
06 September, 2018	Midweek								6
07 September, 2018	Midweek								
08 September, 2018	Weekend	13							
09 September, 2018	Weekend					11			
10 September, 2018	Midweek								
11 September, 2018	Midweek					11			
12 September, 2018	Midweek								
13 September, 2018	Midweek								
14 September, 2018	Midweek							10	
15 September, 2018	Weekend								
16 September, 2018	Weekend						16		
17 September, 2018	Midweek						18		
18 September, 2018	Midweek								
19 September, 2018	Midweek								
20 September, 2018	Midweek								
21 September, 2018	Midweek								
22 September, 2018	Weekend								
23 September, 2018	Weekend							24	
24 September, 2018	Midweek								
25 September, 2018	Midweek					10			
26 September, 2018	Midweek							15	
27 September, 2018	Midweek				4				
28 September, 2018	Midweek								
29 September, 2018	Weekend			1		8			
30 September, 2018	Weekend								
01 October, 2018	Midweek								
02 October, 2018	Midweek								
03 October, 2018	Midweek							7	

Daily tally of interviews, catch and effort

Date	Day	Day Type	Area	Average Fishing Conditions	Interviews & Log Trips	Chinook	Coho	Sockeye	Halibut	Observed Fishing	Flight Time	Expanded Fishing
29 August, 2018	Wednesday	Midweek	Area 20 (East)		0					68	1046	127
30 August, 2018	Thursday	Midweek	Area 20 (East)		2	1						
31 August, 2018	Friday	Midweek	Area 20 (East)	frequent whitecaps	3	8						
01 September, 2018	Saturday	Weekend	Area 20 (East)	choppy	25	15	5	1		220	1034	317
02 September, 2018	Sunday	Weekend	Area 20 (East)	choppy	20	2	2					
03 September, 2018	Monday (Labour Day)	Weekend	Area 20 (East)		0							
04 September, 2018	Tuesday	Midweek	Area 20 (East)	calm/rippled	13	5	7	3				
05 September, 2018	Wednesday	Midweek	Area 20 (East)		1	2	4					
06 September, 2018	Thursday	Midweek	Area 20 (East)	choppy	7	6	1					
07 September, 2018	Friday	Midweek	Area 20 (East)		2	3	3			120	1051	224
08 September, 2018	Saturday	Weekend	Area 20 (East)	calm/rippled	15	9	8	2		205	1054	296
09 September, 2018	Sunday	Weekend	Area 20 (East)	choppy	12	3	8	1				
10 September, 2018	Monday	Midweek	Area 20 (East)		1	1						
11 September, 2018	Tuesday	Midweek	Area 20 (East)	choppy	12	2	14	2				
12 September, 2018	Wednesday	Midweek	Area 20 (East)		0							
13 September, 2018	Thursday	Midweek	Area 20 (East)		2	5	1					
14 September, 2018	Friday	Midweek	Area 20 (East)	calm/rippled	12	2	18	1		102	1054	191
15 September, 2018	Saturday	Weekend	Area 20 (East)		2	3	2					
16 September, 2018	Sunday	Weekend	Area 20 (East)	calm/rippled	17	15	18	1		169	1053	244
17 September, 2018	Monday	Midweek	Area 20 (East)	calm/rippled	21	2	40					
18 September, 2018	Tuesday	Midweek	Area 20 (East)		0					155	1053	290
19 September, 2018	Wednesday	Midweek	Area 20 (East)		2	1	4					
20 September, 2018	Thursday	Midweek	Area 20 (East)		1		3					
21 September, 2018	Friday	Midweek	Area 20 (East)		1		1					
22 September, 2018	Saturday	Weekend	Area 20 (East)		1		2			102	1100	141
23 September, 2018	Sunday	Weekend	Area 20 (East)	calm/rippled	26	13	29	1				
24 September, 2018	Monday	Midweek	Area 20 (East)		3	3	8					
25 September, 2018	Tuesday	Midweek	Area 20 (East)	calm/rippled	10	1	2					
26 September, 2018	Wednesday	Midweek	Area 20 (East)	calm/rippled	15	2	6					
27 September, 2018	Thursday	Midweek	Area 20 (East)	calm/rippled	6	1	2			77	1052	144
28 September, 2018	Friday	Midweek	Area 20 (East)		0							
29 September, 2018	Saturday	Weekend	Area 20 (East)	frequent whitecaps	9	3	9					
30 September, 2018	Sunday	Weekend	Area 20 (East)		0							
01 October, 2018	Monday	Midweek	Area 20 (East)		2		6					
02 October, 2018	Tuesday	Midweek	Area 20 (East)		1		4			32	1111	52
03 October, 2018	Wednesday	Midweek	Area 20 (East)	choppy	8	2	19			53	1116	87
	Totals	Midweek	Area 20 (East)	calm/rippled	109	36	114	6		114*		212*
	Totals	Weekend	Area 20 (East)	choppy	127	63	83	6		174*		250*

* Average number of boats observed and Expanded

Simple area based cpue (catch per boat trip) expansion

				CPUE				Retained			
Day Type	Average Expanded Boats	Number of Days	Total estimated Effort	Chinook	Coho	Sockeye	Halibut	Chinook	Coho	Sockeye	Halibut
Midweek	212	19	4028	0.3303	1.0459	0.0551		1330	4213	222	
Weekend	250	11	2750	0.4961	0.6535	0.0472		1364	1797	130	

Recent years estimates of retained catch and effort

Year	Area	Month	Total Effort	Chinook Kept	Coho Kept	Sockeye Kept	Halibut Kept
2013	Area 20 (East)	September	5025	1754	4691		137
2014	Area 20 (East)	September	4847	750	8745	634	27
2015	Area 20 (East)	September	5124	2520	4392		17
2016	Area 20 (East)	September	5619	2073	3936		11
2017	Area 20 (East)	September	8560	3127	5167		403
2018	Area 20 (East)	September	6247	1800	4906	383	
5-Yr Avg	Area 20 (East)	September	5835	2045	5386	634	119

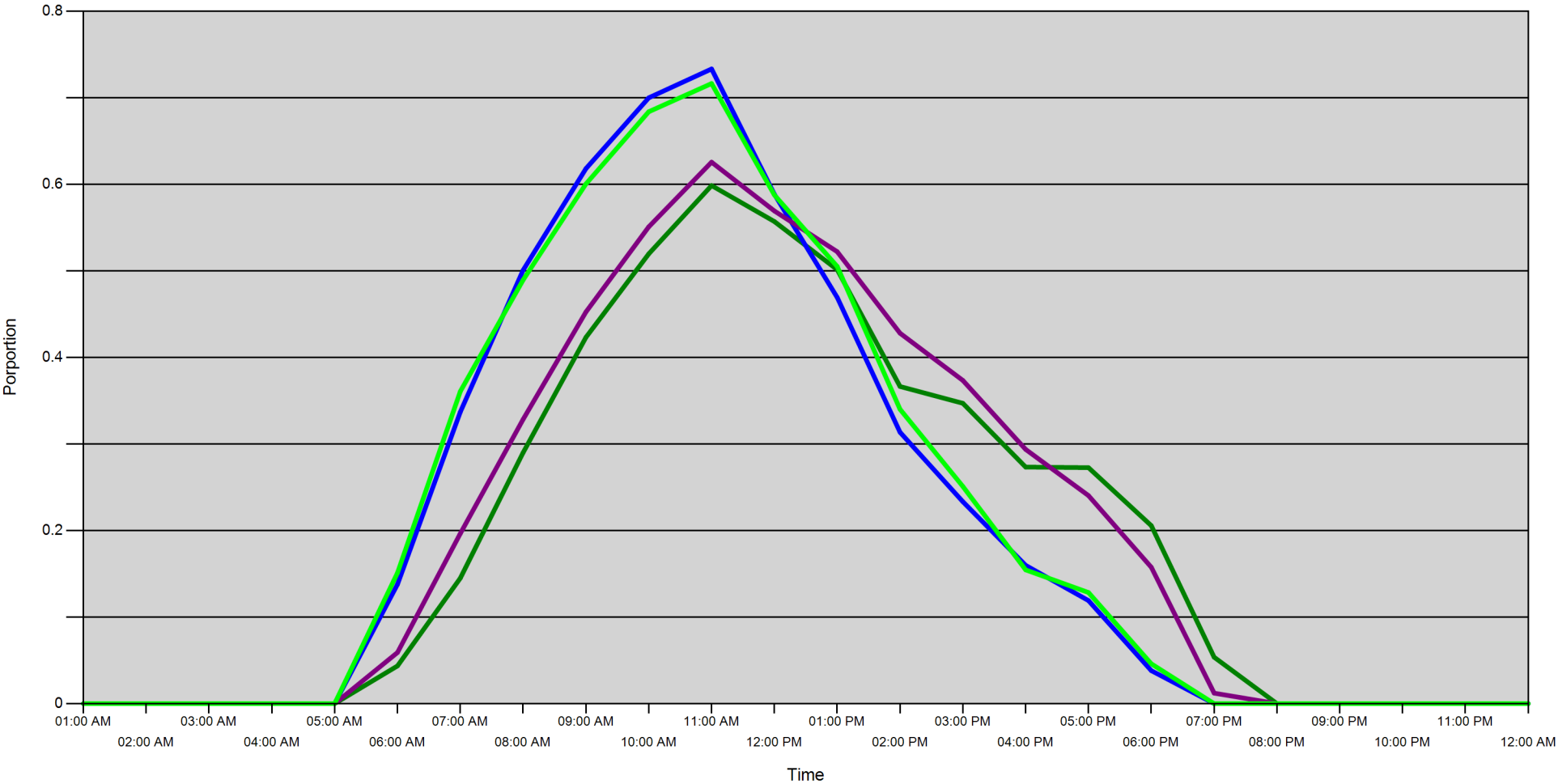
Sport Head Recovery Review

Year	Area	Month	Species	Creel Marked Catch	Creel Mark Rate	Creel Submission Rate	iRec Marked Catch	iRec Mark Rate	iRec Submission Rate	Sport Head recoveries
2018	Area 20	9	Coho	5727	90 %	15 %	5326	90 %	16 %	864
2018	Area 20	9	Chinook	819	36 %	30 %	2252	62 %	11 %	246

Guided Proprtions Review

Data Source	Year	Month	Area	Interviews/Angler Days	Guided Proportion
Creel Interviews	2018	09	Area 20	272	8 %
iRec Anglers	2018	09	Area 20	10033	12 %
iRec Responses	2018	09	Area 20	215	3 %

Proportion of each day's fishing by hour



Area		01:00 AM	02:00 AM	03:00 AM	04:00 AM	05:00 AM	06:00 AM	07:00 AM	08:00 AM	09:00 AM	10:00 AM	11:00 AM	12:00 PM	01:00 PM	02:00 PM	03:00 PM	04:00 PM	05:00 PM	06:00 PM	07:00 PM	08:00 PM	09:00 PM	10:00 PM	11:00 PM	12:00 AM
20D	Midweek	0	0	0	0	0	0.044	0.145	0.29	0.423	0.52	0.599	0.557	0.502	0.366	0.347	0.273	0.273	0.206	0.054	0	0	0	0	0
	Weekend	0	0	0	0	0	0.138	0.337	0.501	0.618	0.7	0.733	0.589	0.469	0.314	0.233	0.16	0.119	0.038	0	0	0	0	0	0
20C	Midweek	0	0	0	0	0	0.059	0.197	0.329	0.453	0.551	0.626	0.569	0.522	0.428	0.373	0.294	0.24	0.158	0.012	0	0	0	0	0
	Weekend	0	0	0	0	0	0.151	0.361	0.49	0.601	0.684	0.717	0.588	0.505	0.34	0.251	0.155	0.128	0.046	0	0	0	0	0	0

Daily Fishing Conditions

		Becher Bay	Flemming	Jock's Dock (Crab Shack)	Pedder Bay
29 August, 2018	Midweek				
30 August, 2018	Midweek				
31 August, 2018	Midweek	frequent whitecaps			
01 September, 2018	Weekend	choppy			
02 September, 2018	Weekend				choppy
03 September, 2018	Weekend				
04 September, 2018	Midweek	calm/rippled			
05 September, 2018	Midweek				
06 September, 2018	Midweek				choppy
07 September, 2018	Midweek				
08 September, 2018	Weekend	calm/rippled			
09 September, 2018	Weekend			choppy	
10 September, 2018	Midweek				
11 September, 2018	Midweek			choppy	
12 September, 2018	Midweek				
13 September, 2018	Midweek				
14 September, 2018	Midweek				calm/rippled
15 September, 2018	Weekend				
16 September, 2018	Weekend			calm/rippled	
17 September, 2018	Midweek			calm/rippled	
18 September, 2018	Midweek				
19 September, 2018	Midweek				
20 September, 2018	Midweek				
21 September, 2018	Midweek				
22 September, 2018	Weekend				
23 September, 2018	Weekend				calm/rippled
24 September, 2018	Midweek				
25 September, 2018	Midweek			calm/rippled	
26 September, 2018	Midweek				calm/rippled
27 September, 2018	Midweek		calm/rippled		
28 September, 2018	Midweek				
29 September, 2018	Weekend		choppy	frequent whitecaps	
30 September, 2018	Weekend				
01 October, 2018	Midweek				
02 October, 2018	Midweek				
03 October, 2018	Midweek				choppy