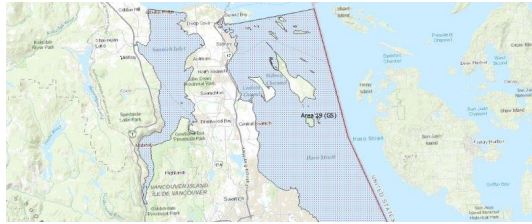


FISHERIES AND OCEANS CANADA

SOUTH COAST ASSESSMENT BULLETIN

CREEL SURVEY DATA REVIEW PACKAGE

Area 19 (GS) May 2019



Prepared By:
South Coast Salmon Stock Assessment Section

Thursday 27th August, 2020



Fisheries and Oceans
Canada

Pêches et Océans
Canada



Table 1: Numbers of Interviews conducted contributing to the area by day and access site.

Date	Day Type	Cattle Point		Cowichan Bay		Sidney	
		AM	PM	AM	PM	AM	PM
28 Apr 2019	Weekend						
29 Apr 2019	Midweek		1				
30 Apr 2019	Midweek						
01 May 2019	Midweek						
02 May 2019	Midweek						
03 May 2019	Midweek					1	
04 May 2019	Weekend				1		
05 May 2019	Weekend						
06 May 2019	Midweek			1			
07 May 2019	Midweek						
08 May 2019	Midweek						
09 May 2019	Midweek						
10 May 2019	Midweek						
11 May 2019	Weekend				1		
12 May 2019	Weekend						
13 May 2019	Midweek	1					
14 May 2019	Midweek						
15 May 2019	Midweek						
16 May 2019	Midweek						
17 May 2019	Midweek						
18 May 2019	Weekend						
19 May 2019	Weekend						9
20 May 2019	Weekend						
21 May 2019	Midweek						
22 May 2019	Midweek						
23 May 2019	Midweek						
24 May 2019	Midweek						
25 May 2019	Weekend						
26 May 2019	Weekend					5	
27 May 2019	Midweek						
28 May 2019	Midweek						
29 May 2019	Midweek						
30 May 2019	Midweek						
31 May 2019	Midweek						4
01 Jun 2019	Weekend						
02 Jun 2019	Weekend						
03 Jun 2019	Midweek						

Table 2: Daily tally of interviews, catch and effort.

Date	Day	Average Fishing Conditions	Interviews & Log Trips	Chinook	Coho	Sockeye	Halibut	Observed Fishing	Flight Time	Expanded Fishing
28-Apr-2019	Sunday		0							
29-Apr-2019	Monday	choppy	1							
30-Apr-2019	Tuesday		0							
01-May-2019	Wednesday		0							
02-May-2019	Thursday		0							
03-May-2019	Friday	calm/rippled	1							
04-May-2019	Saturday	calm/rippled	1					10	1025	35
05-May-2019	Sunday		0							
06-May-2019	Monday	calm/rippled	1							
07-May-2019	Tuesday		0							
08-May-2019	Wednesday		0							
09-May-2019	Thursday		0							
10-May-2019	Friday		0							
11-May-2019	Saturday	calm/rippled	1					7	1020	24
12-May-2019	Sunday		0							
13-May-2019	Monday	choppy	1							
14-May-2019	Tuesday		0							
15-May-2019	Wednesday		0							
16-May-2019	Thursday		0							
17-May-2019	Friday		0							
18-May-2019	Saturday		0							
19-May-2019	Sunday	choppy	9							
20-May-2019	Monday (Victoria Day)		0							
21-May-2019	Tuesday		0							
22-May-2019	Wednesday		0					1	1016	3
23-May-2019	Thursday		0					0	1031	0
24-May-2019	Friday		0					1	0958	4
25-May-2019	Saturday		0					9	1022	24
26-May-2019	Sunday	calm/rippled	5							
27-May-2019	Monday		0							
28-May-2019	Tuesday		0							
29-May-2019	Wednesday		0							
30-May-2019	Thursday		0							
31-May-2019	Friday	choppy	4							
01-Jun-2019	Saturday		0							
02-Jun-2019	Sunday		0					6	1026	21
03-Jun-2019	Monday		0							
	Totals	choppy	7					3*		9*
	Totals	calm/rippled	16					6*		21*

* Average number of boats Observed and Expanded

Table 3: Simple area based cpue (catch per boat trip) expansion.

Day Type	Average Expanded Boats	Number of Days	Total Estimated Effort	CPUE				Retained			
				Chinook	Coho	Sockeye	Halibut	Chinook	Coho	Sockeye	Halibut
Midweek	9	22	198								
Weekend	21	9	189								

Table 4: Recent years estimates of retained catch and effort.

Year	Month	Total Effort	Chinook Kept	Coho Kept	Sockeye Kept	Halibut Kept
2014	May	485				77
2015	May	583	40			65
2016	May	547	37			
2017	May	575	268			
2018	May	936	341			
2019	May	378	0			0
5-Yr Avg	May	625	172			71

Table 5: Sport Head Recovery Review.

Species	Creel Marked Catch	Creel Mark Rate	Creel Submission Rate	iRec Marked Catch	iRec Mark Rate	iRec Submission Rate	Sport Head Recoveries
---------	--------------------	-----------------	-----------------------	-------------------	----------------	----------------------	-----------------------

Table 6: Guided Proprtions Review.

Data Source	Interviews / Angler Days	Guided Proportion
Creel Interivews	23	0%
iRec Anglers	286	0%
iRec Responses	10	10%

Figure 1: Proportion of each day's fishing by hour.

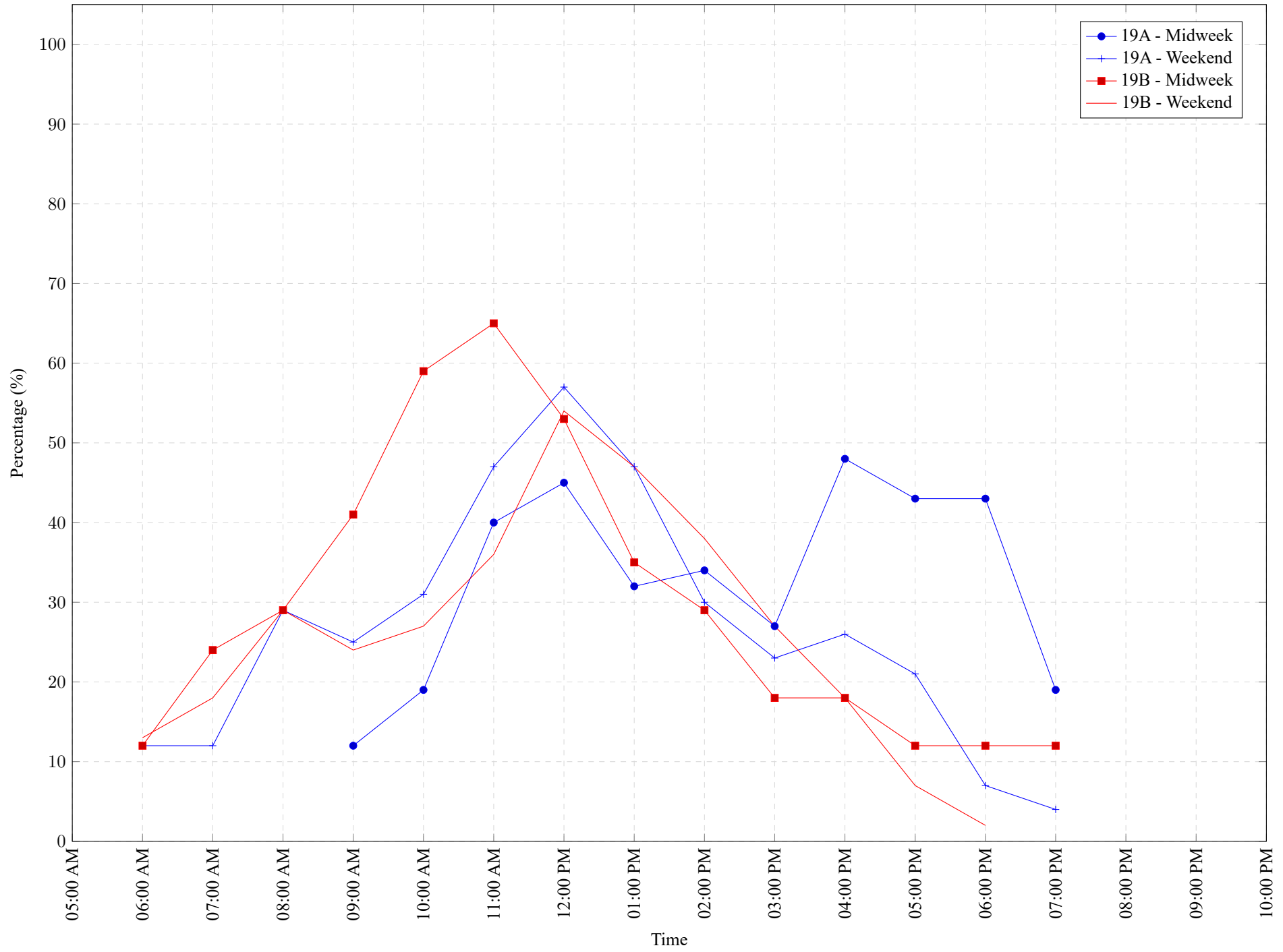


Table 7: Proportion of each day's fishing by hour.

Areas	Day Type	6:00 AM	7:00 AM	8:00 AM	9:00 AM	10:00 AM	11:00 AM	12:00 PM	01:00 PM	02:00 PM	03:00 PM	04:00 PM	05:00 PM	06:00 PM	07:00 PM	08:00 PM	09:00 PM	10:00 PM
19A	Midweek	0%	0%	0%	12%	19%	40%	45%	32%	34%	27%	48%	43%	43%	19%	0%	0%	0%
19A	Weekend	12%	12%	29%	25%	31%	47%	57%	47%	30%	23%	26%	21%	7%	4%	0%	0%	0%
19B	Midweek	12%	24%	29%	41%	59%	65%	53%	35%	29%	18%	18%	12%	12%	12%	0%	0%	0%
19B	Weekend	13%	18%	29%	24%	27%	36%	54%	47%	38%	27%	18%	7%	2%	0%	0%	0%	0%

Table 8: Daily Fishing Conditions.

Date	Day Type	Cattle Point	Cowichan Bay	Sidney
28 Apr 2019	Weekend	choppy		
29 Apr 2019	Midweek			
30 Apr 2019	Midweek			
01 May 2019	Midweek			
02 May 2019	Midweek			
03 May 2019	Midweek			calm/rippled
04 May 2019	Weekend		calm/rippled	
05 May 2019	Weekend			
06 May 2019	Midweek		calm/rippled	
07 May 2019	Midweek			
08 May 2019	Midweek			
09 May 2019	Midweek			
10 May 2019	Midweek			
11 May 2019	Weekend		calm/rippled	
12 May 2019	Weekend			
13 May 2019	Midweek	choppy		
14 May 2019	Midweek			
15 May 2019	Midweek			
16 May 2019	Midweek			
17 May 2019	Midweek			
18 May 2019	Weekend			choppy
19 May 2019	Weekend			
20 May 2019	Weekend			
21 May 2019	Midweek			
22 May 2019	Midweek			
23 May 2019	Midweek			
24 May 2019	Midweek			
25 May 2019	Weekend			
26 May 2019	Weekend			calm/rippled
27 May 2019	Midweek			
28 May 2019	Midweek			
29 May 2019	Midweek			
30 May 2019	Midweek			
31 May 2019	Midweek			choppy
01 Jun 2019	Weekend			
02 Jun 2019	Weekend			
03 Jun 2019	Midweek			