

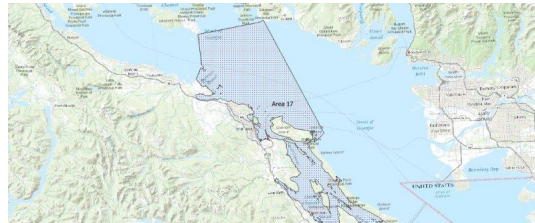
# FISHERIES AND OCEANS CANADA

## SOUTH COAST ASSESSMENT BULLETIN

### CREEL SURVEY DATA REVIEW PACKAGE

---

## Area 17 June 2019



---

*Prepared By:*

South Coast Salmon Stock Assessment Section

Thursday 27<sup>th</sup> August, 2020



Fisheries and Oceans  
Canada

Pêches et Océans  
Canada



Table 1: Numbers of Interviews conducted contributing to the area by day and access site.

Date	Day Type	Brehin		Crofton Ramp		French Ck		Ladysmith		McDonald Beach		Planetar- ium PM	Schooner	
		AM	PM	AM	PM	AM	PM	AM	PM	AM	PM		AM	PM
29 May 2019	Midweek				2									
30 May 2019	Midweek													3
31 May 2019	Midweek	4												
01 Jun 2019	Weekend													
02 Jun 2019	Weekend													2
03 Jun 2019	Midweek		9											
04 Jun 2019	Midweek													
05 Jun 2019	Midweek													
06 Jun 2019	Midweek								2					
07 Jun 2019	Midweek													
08 Jun 2019	Weekend		14											
09 Jun 2019	Weekend					2			9	1				
10 Jun 2019	Midweek							2						
11 Jun 2019	Midweek													
12 Jun 2019	Midweek													
13 Jun 2019	Midweek								1					
14 Jun 2019	Midweek	1												
15 Jun 2019	Weekend							5						4
16 Jun 2019	Weekend						2							
17 Jun 2019	Midweek	1						2						
18 Jun 2019	Midweek												1	
19 Jun 2019	Midweek													
20 Jun 2019	Midweek													
21 Jun 2019	Midweek			2										
22 Jun 2019	Weekend				6		1							
23 Jun 2019	Weekend										1			
24 Jun 2019	Midweek													
25 Jun 2019	Midweek													3
26 Jun 2019	Midweek				6									
27 Jun 2019	Midweek		2											
28 Jun 2019	Midweek													
29 Jun 2019	Weekend							4		2				
30 Jun 2019	Weekend							3			1		1	
01 Jul 2019	Weekend													
02 Jul 2019	Midweek													
03 Jul 2019	Midweek													

Table 2: Daily tally of interviews, catch and effort.

Date	Day	Average Fishing Conditions	Interviews & Log Trips	Chinook	Coho	Sockeye	Halibut	Observed Fishing	Flight Time	Expanded Fishing
29-May-2019	Wednesday	calm/rippled	3							
30-May-2019	Thursday	calm/rippled	5							
31-May-2019	Friday	choppy	7							
01-Jun-2019	Saturday		3							
02-Jun-2019	Sunday	choppy	4		3			31	1210	61
03-Jun-2019	Monday	choppy	10		1					
04-Jun-2019	Tuesday		1							
05-Jun-2019	Wednesday		0							
06-Jun-2019	Thursday	choppy	2							
07-Jun-2019	Friday		0					15	1216	40
08-Jun-2019	Saturday	choppy	15		5					
09-Jun-2019	Sunday	calm/rippled	13	2				50	1216	97
10-Jun-2019	Monday	calm/rippled	2		1					
11-Jun-2019	Tuesday		0							
12-Jun-2019	Wednesday		0							
13-Jun-2019	Thursday	calm/rippled	2					6	1212	16
14-Jun-2019	Friday	choppy	3							
15-Jun-2019	Saturday	calm/rippled	11							
16-Jun-2019	Sunday	calm/rippled	3		1					
17-Jun-2019	Monday	calm/rippled	3		1					
18-Jun-2019	Tuesday	choppy	2							
19-Jun-2019	Wednesday		0					0	1218	0
20-Jun-2019	Thursday		1	4						
21-Jun-2019	Friday	choppy	4	2	1					
22-Jun-2019	Saturday	choppy	11					28	1215	54
23-Jun-2019	Sunday	calm/rippled	3							
24-Jun-2019	Monday		0							
25-Jun-2019	Tuesday	calm/rippled	5							
26-Jun-2019	Wednesday	calm/rippled	6					21	1209	56
27-Jun-2019	Thursday	calm/rippled	2							
28-Jun-2019	Friday		1							
29-Jun-2019	Saturday	calm/rippled	9					43	1222	83
30-Jun-2019	Sunday	calm/rippled	5							
01-Jul-2019	Monday (Canada Day)		1							
02-Jul-2019	Tuesday		0							
03-Jul-2019	Wednesday		0							
	Totals	calm/rippled	44	6	4			11*		28*
	Totals	calm/rippled	77	2	9			38*		74*

\* Average number of boats Observed and Expanded

**Table 3: Simple area based cpue (catch per boat trip) expansion.**

Day Type	Average Expanded Boats	Number of Days	Total Estimated Effort	CPUE				Retained			
				Chinook	Coho	Sockeye	Halibut	Chinook	Coho	Sockeye	Halibut
Midweek	28	20	560	0.1360	0.0910			76	51		
Weekend	74	10	740	0.0260	0.1170			19	87		

**Table 4: Recent years estimates of retained catch and effort.**

Year	Month	Total Effort	Chinook Kept	Coho Kept	Sockeye Kept	Halibut Kept
2014	June	2857	1706			
2015	June	1618	381	25		1
2016	June	1496	627	204		
2017	June	2044	457	31		
2018	June	1411	827	516		
2019	June	1267	16	246		0
5-Yr Avg	June	1885	800	194		1

**Table 5: Sport Head Recovery Review.**

Species	Creel Marked Catch	Creel Mark Rate	Creel Submission Rate	iRec Marked Catch	iRec Mark Rate	iRec Submission Rate	Sport Head Recoveries
Coho	246	100%	4%	355	100%	3%	10
Chinook	13	81%	23%		%		3

**Table 6: Guided Proprtions Review.**

Data Source	Interviews / Angler Days	Guided Proportion
Creel Interivews	121	2%
iRec Anglers	1893	16%
iRec Responses	54	6%

Figure 1: Proportion of each day's fishing by hour.

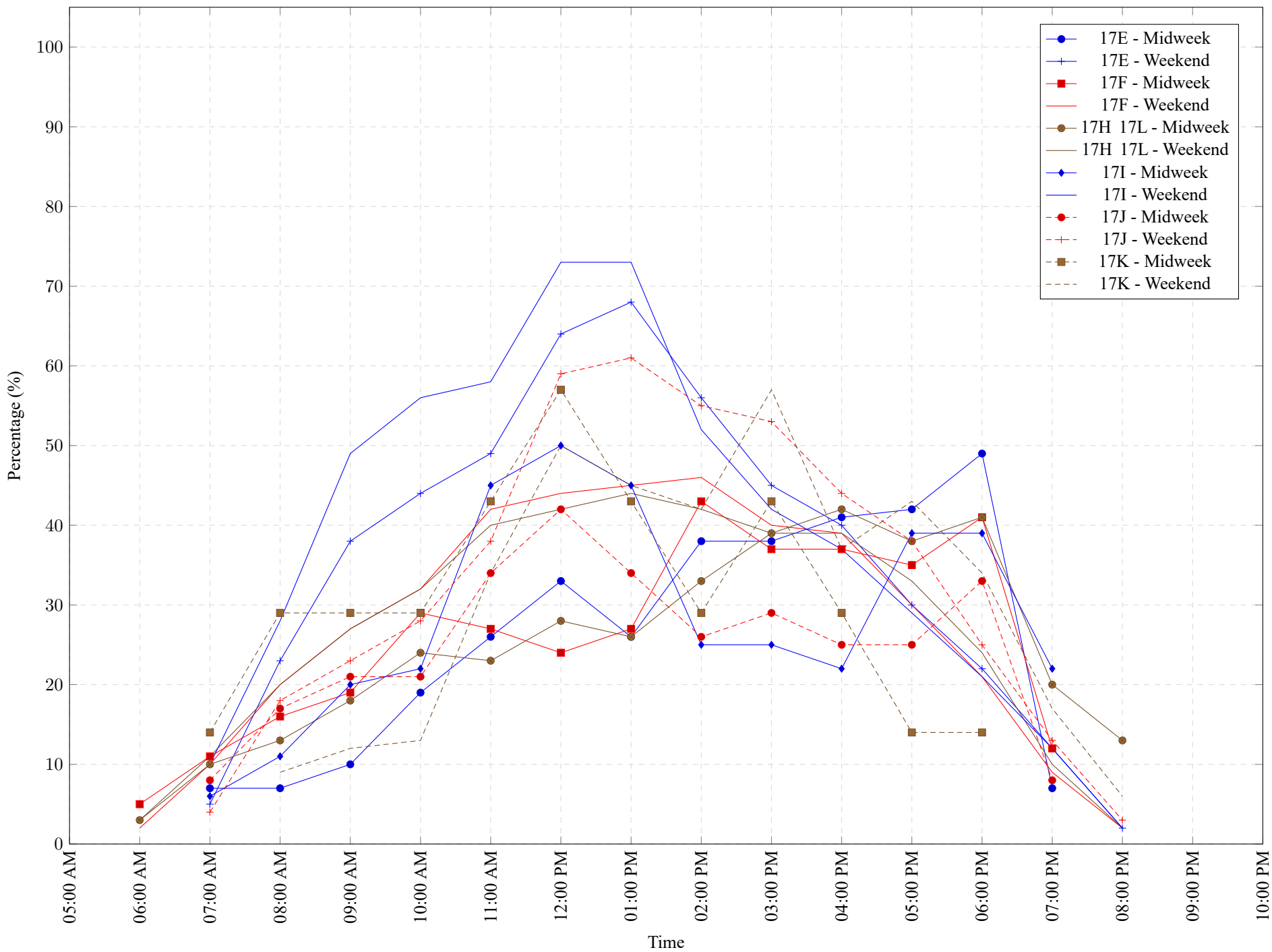


Table 7: Proportion of each day's fishing by hour.

Areas	Day Type	6:00 AM	7:00 AM	8:00 AM	9:00 AM	10:00 AM	11:00 AM	12:00 PM	01:00 PM	02:00 PM	03:00 PM	04:00 PM	05:00 PM	06:00 PM	07:00 PM	08:00 PM	09:00 PM	10:00 PM
17E	Midweek	0%	7%	7%	10%	19%	26%	33%	26%	38%	38%	41%	42%	49%	7%	0%	0%	0%
17E	Weekend	0%	5%	23%	38%	44%	49%	64%	68%	56%	45%	40%	30%	22%	12%	2%	0%	0%
17F	Midweek	5%	11%	16%	19%	29%	27%	24%	27%	43%	37%	37%	35%	41%	12%	0%	0%	0%
17F	Weekend	2%	10%	20%	27%	32%	42%	44%	45%	46%	40%	39%	30%	21%	9%	2%	0%	0%
17H 17L	Midweek	3%	10%	13%	18%	24%	23%	28%	26%	33%	39%	42%	38%	41%	20%	13%	0%	0%
17H 17L	Weekend	3%	11%	20%	27%	32%	40%	42%	44%	42%	39%	39%	33%	24%	10%	2%	0%	0%
17I	Midweek	0%	6%	11%	20%	22%	45%	50%	45%	25%	25%	22%	39%	39%	22%	0%	0%	0%
17I	Weekend	0%	10%	28%	49%	56%	58%	73%	73%	52%	42%	37%	29%	21%	12%	2%	0%	0%
17J	Midweek	0%	8%	17%	21%	21%	34%	42%	34%	26%	29%	25%	25%	33%	8%	0%	0%	0%
17J	Weekend	0%	4%	18%	23%	28%	38%	59%	61%	55%	53%	44%	38%	25%	13%	3%	0%	0%
17K	Midweek	0%	14%	29%	29%	29%	43%	57%	43%	29%	43%	29%	14%	14%	0%	0%	0%	0%
17K	Weekend	0%	0%	9%	12%	13%	34%	50%	45%	42%	57%	37%	43%	34%	17%	6%	0%	0%

Table 8: Daily Fishing Conditions.

Date	Day Type	Brechin	Crofton Ramp	French Ck	Ladysmith	McDonald Beach	Planetarium	Schooner
29 May 2019	Midweek		calm/rippled					
30 May 2019	Midweek							calm/rippled
31 May 2019	Midweek	choppy						
01 Jun 2019	Weekend							
02 Jun 2019	Weekend							choppy
03 Jun 2019	Midweek	choppy						
04 Jun 2019	Midweek							
05 Jun 2019	Midweek							
06 Jun 2019	Midweek				choppy			
07 Jun 2019	Midweek							
08 Jun 2019	Weekend	choppy						
09 Jun 2019	Weekend			choppy	calm/rippled	calm/rippled		
10 Jun 2019	Midweek				calm/rippled			
11 Jun 2019	Midweek							
12 Jun 2019	Midweek							
13 Jun 2019	Midweek				calm/rippled			
14 Jun 2019	Midweek	choppy						
15 Jun 2019	Weekend				calm/rippled			calm/rippled
16 Jun 2019	Weekend			calm/rippled				
17 Jun 2019	Midweek	choppy			calm/rippled			
18 Jun 2019	Midweek							choppy
19 Jun 2019	Midweek							
20 Jun 2019	Midweek							
21 Jun 2019	Midweek		choppy					
22 Jun 2019	Weekend		choppy	frequent whitecaps				
23 Jun 2019	Weekend					calm/rippled		
24 Jun 2019	Midweek							
25 Jun 2019	Midweek							calm/rippled
26 Jun 2019	Midweek		calm/rippled					
27 Jun 2019	Midweek	calm/rippled						
28 Jun 2019	Midweek							
29 Jun 2019	Weekend				calm/rippled	calm/rippled		
30 Jun 2019	Weekend				calm/rippled		choppy	choppy
01 Jul 2019	Weekend							
02 Jul 2019	Midweek							
03 Jul 2019	Midweek							