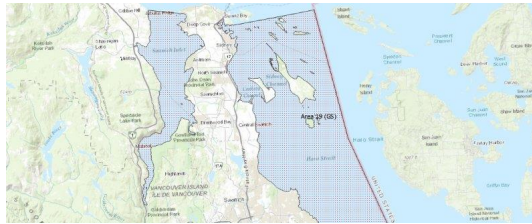


FISHERIES AND OCEANS CANADA

SOUTH COAST ASSESSMENT BULLETIN

CREEL SURVEY DATA REVIEW PACKAGE

Area 19 (GS) June 2019



Prepared By:
South Coast Salmon Stock Assessment Section

Thursday 27th August, 2020



Fisheries and Oceans
Canada

Pêches et Océans
Canada



Table 1: Numbers of Interviews conducted contributing to the area by day and access site.

Date	Day Type	Cattle Point AM	Cowichan Bay PM	Sidney AM	PM
29 May 2019	Midweek				
30 May 2019	Midweek				
31 May 2019	Midweek				4
01 Jun 2019	Weekend				
02 Jun 2019	Weekend				
03 Jun 2019	Midweek				
04 Jun 2019	Midweek				
05 Jun 2019	Midweek				
06 Jun 2019	Midweek				
07 Jun 2019	Midweek				
08 Jun 2019	Weekend				
09 Jun 2019	Weekend				
10 Jun 2019	Midweek				
11 Jun 2019	Midweek				
12 Jun 2019	Midweek				
13 Jun 2019	Midweek				
14 Jun 2019	Midweek				1
15 Jun 2019	Weekend	1			
16 Jun 2019	Weekend		3	3	
17 Jun 2019	Midweek				
18 Jun 2019	Midweek				
19 Jun 2019	Midweek				
20 Jun 2019	Midweek				
21 Jun 2019	Midweek				
22 Jun 2019	Weekend				
23 Jun 2019	Weekend				
24 Jun 2019	Midweek				
25 Jun 2019	Midweek				
26 Jun 2019	Midweek				
27 Jun 2019	Midweek				
28 Jun 2019	Midweek				
29 Jun 2019	Weekend				
30 Jun 2019	Weekend				7
01 Jul 2019	Weekend				
02 Jul 2019	Midweek				
03 Jul 2019	Midweek				

Table 2: Daily tally of interviews, catch and effort.

Date	Day	Average Fishing Conditions	Interviews & Log Trips	Chinook	Coho	Sockeye	Halibut	Observed Fishing	Flight Time	Expanded Fishing
29-May-2019	Wednesday	choppy	0							
30-May-2019	Thursday		0							
31-May-2019	Friday		4							
01-Jun-2019	Saturday	frequent whitecaps	0							
02-Jun-2019	Sunday		0					6	1026	13
03-Jun-2019	Monday		0							
04-Jun-2019	Tuesday		0							
05-Jun-2019	Wednesday		0							
06-Jun-2019	Thursday		0							
07-Jun-2019	Friday		0					0	1032	0
08-Jun-2019	Saturday		0							
09-Jun-2019	Sunday		0					6	1031	14
10-Jun-2019	Monday		0							
11-Jun-2019	Tuesday	calm/rippled	0							
12-Jun-2019	Wednesday		0							
13-Jun-2019	Thursday		0					4	1030	8
14-Jun-2019	Friday		1							
15-Jun-2019	Saturday		1							
16-Jun-2019	Sunday		6							
17-Jun-2019	Monday		0							
18-Jun-2019	Tuesday		0							
19-Jun-2019	Wednesday		0					1	1030	2
20-Jun-2019	Thursday		0							
21-Jun-2019	Friday		0							
22-Jun-2019	Saturday	calm/rippled	0					12	1031	28
23-Jun-2019	Sunday		0							
24-Jun-2019	Monday		0							
25-Jun-2019	Tuesday		0							
26-Jun-2019	Wednesday		0					4	1029	9
27-Jun-2019	Thursday		0							
28-Jun-2019	Friday		0							
29-Jun-2019	Saturday		0					7	1030	17
30-Jun-2019	Sunday		7							
01-Jul-2019	Monday (Canada Day)	frequent whitecaps	0							
02-Jul-2019	Tuesday		0							
03-Jul-2019	Wednesday		0							
	Totals	frequent whitecaps	1					2*		5*
	Totals	calm/rippled	14					8*		18*

* Average number of boats Observed and Expanded

Table 3: Simple area based cpue (catch per boat trip) expansion.

Day Type	Average Expanded Boats	Number of Days	Total Estimated Effort	CPUE				Retained			
				Chinook	Coho	Sockeye	Halibut	Chinook	Coho	Sockeye	Halibut
Weekend	18	10	180								
Midweek	5	20	100								

Table 4: Recent years estimates of retained catch and effort.

Year	Month	Total Effort	Chinook Kept	Coho Kept	Sockeye Kept	Halibut Kept
2014	June	490	15			5
2015	June	444	60			
2016	June	760	5			5
2017	June	527	73			
2018	June	1219	38			
2019	June	237	0			0
5-Yr Avg	June	688	38			5

Table 5: Sport Head Recovery Review.

Species	Creel Marked Catch	Creel Mark Rate	Creel Submission Rate	iRec Marked Catch	iRec Mark Rate	iRec Submission Rate	Sport Head Recoveries
---------	--------------------	-----------------	-----------------------	-------------------	----------------	----------------------	-----------------------

Table 6: Guided Proprtions Review.

Data Source	Interviews / Angler Days	Guided Proportion
Creel Interivews	15	0%
iRec Anglers	135	38%
iRec Responses	5	20%

Figure 1: Proportion of each day's fishing by hour.

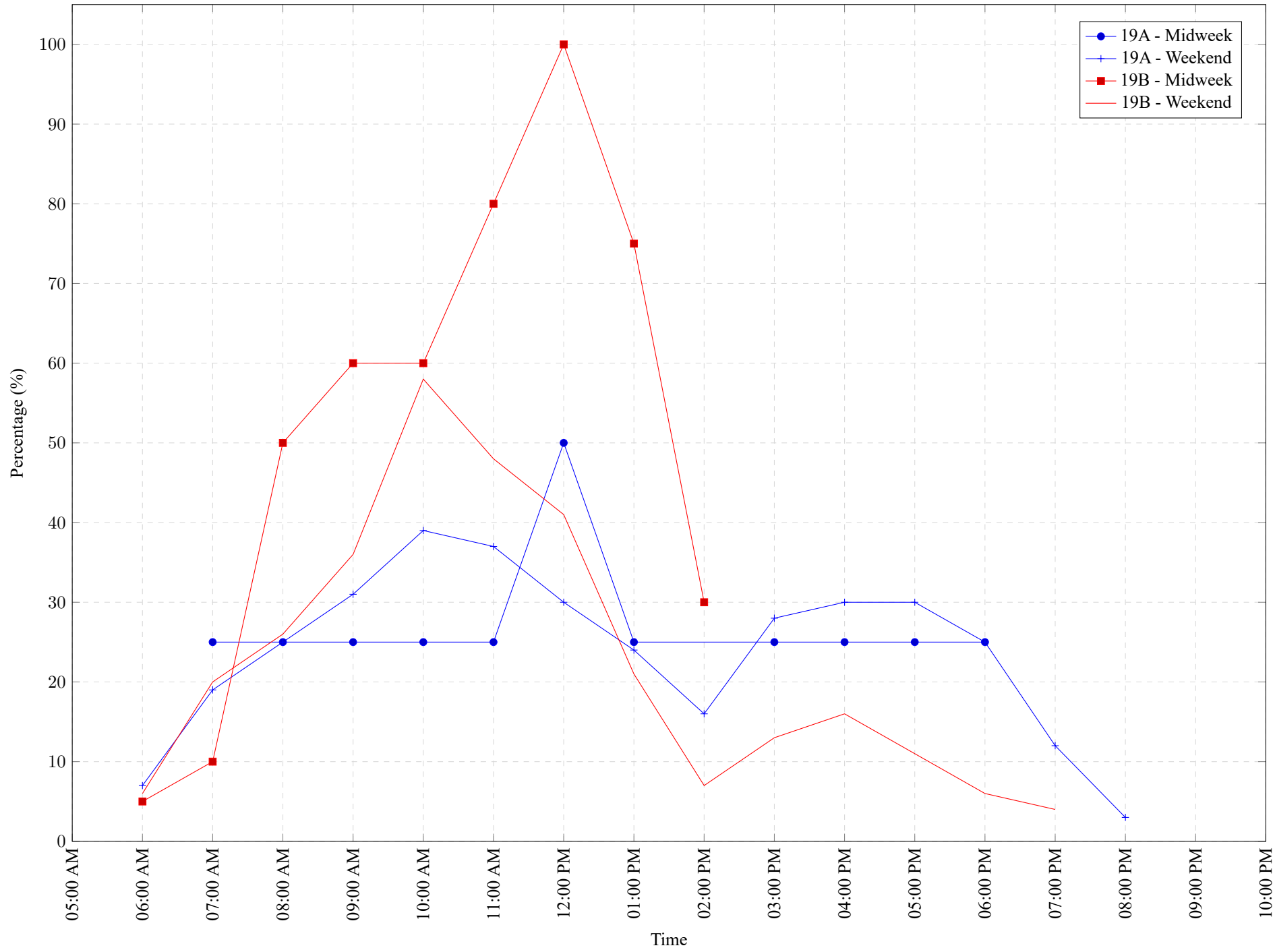


Table 7: Proportion of each day's fishing by hour.

Areas	Day Type	6:00 AM	7:00 AM	8:00 AM	9:00 AM	10:00 AM	11:00 AM	12:00 PM	01:00 PM	02:00 PM	03:00 PM	04:00 PM	05:00 PM	06:00 PM	07:00 PM	08:00 PM	09:00 PM	10:00 PM
19A	Midweek	0%	25%	25%	25%	25%	25%	50%	25%	0%	25%	25%	25%	25%	0%	0%	0%	0%
19A	Weekend	7%	19%	25%	31%	39%	37%	30%	24%	16%	28%	30%	30%	25%	12%	3%	0%	0%
19B	Midweek	5%	10%	50%	60%	60%	80%	100%	75%	30%	0%	0%	0%	0%	0%	0%	0%	0%
19B	Weekend	6%	20%	26%	36%	58%	48%	41%	21%	7%	13%	16%	11%	6%	4%	0%	0%	0%

Table 8: Daily Fishing Conditions.

Date	Day Type	Cattle Point	Cowichan Bay	Sidney
29 May 2019	Midweek			
30 May 2019	Midweek			
31 May 2019	Midweek			choppy
01 Jun 2019	Weekend			
02 Jun 2019	Weekend			
03 Jun 2019	Midweek			
04 Jun 2019	Midweek			
05 Jun 2019	Midweek			
06 Jun 2019	Midweek			
07 Jun 2019	Midweek			
08 Jun 2019	Weekend			
09 Jun 2019	Weekend			
10 Jun 2019	Midweek			
11 Jun 2019	Midweek			
12 Jun 2019	Midweek			
13 Jun 2019	Midweek			
14 Jun 2019	Midweek			frequent whitecaps
15 Jun 2019	Weekend	calm/rippled		
16 Jun 2019	Weekend		choppy	calm/rippled
17 Jun 2019	Midweek			
18 Jun 2019	Midweek			
19 Jun 2019	Midweek			
20 Jun 2019	Midweek			
21 Jun 2019	Midweek			
22 Jun 2019	Weekend			
23 Jun 2019	Weekend			
24 Jun 2019	Midweek			
25 Jun 2019	Midweek			
26 Jun 2019	Midweek			
27 Jun 2019	Midweek			
28 Jun 2019	Midweek			
29 Jun 2019	Weekend			
30 Jun 2019	Weekend			calm/rippled
01 Jul 2019	Weekend			
02 Jul 2019	Midweek			
03 Jul 2019	Midweek			