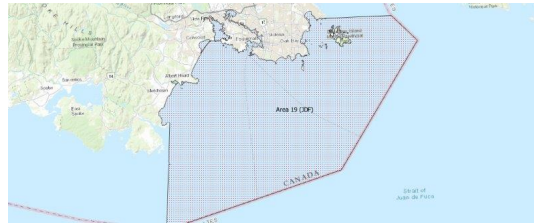


FISHERIES AND OCEANS CANADA

SOUTH COAST ASSESSMENT BULLETIN

CREEL SURVEY DATA REVIEW PACKAGE

Area 19 (JDF) June 2019



Prepared By:

South Coast Salmon Stock Assessment Section

Thursday 27th August, 2020



Fisheries and Oceans
Canada

Pêches et Océans
Canada



Table 1: Numbers of Interviews conducted contributing to the area by day and access site.

Date	Day Type	Becher Bay	Cattle Point		Flemming		Pedder Bay	
		AM	AM	PM	AM	PM	AM	PM
29 May 2019	Midweek							
30 May 2019	Midweek							
31 May 2019	Midweek							
01 Jun 2019	Weekend							3
02 Jun 2019	Weekend			3				
03 Jun 2019	Midweek							
04 Jun 2019	Midweek							
05 Jun 2019	Midweek		3					
06 Jun 2019	Midweek							
07 Jun 2019	Midweek						2	
08 Jun 2019	Weekend					3		
09 Jun 2019	Weekend	1						
10 Jun 2019	Midweek	2				7		
11 Jun 2019	Midweek							1
12 Jun 2019	Midweek				2			
13 Jun 2019	Midweek							
14 Jun 2019	Midweek							
15 Jun 2019	Weekend		9				8	
16 Jun 2019	Weekend							2
17 Jun 2019	Midweek			2				
18 Jun 2019	Midweek							
19 Jun 2019	Midweek							
20 Jun 2019	Midweek							
21 Jun 2019	Midweek							
22 Jun 2019	Weekend							
23 Jun 2019	Weekend							
24 Jun 2019	Midweek							
25 Jun 2019	Midweek							
26 Jun 2019	Midweek							
27 Jun 2019	Midweek							
28 Jun 2019	Midweek							
29 Jun 2019	Weekend					4		
30 Jun 2019	Weekend							
01 Jul 2019	Weekend							
02 Jul 2019	Midweek							
03 Jul 2019	Midweek							

Table 2: Daily tally of interviews, catch and effort.

Date	Day	Average Fishing Conditions	Interviews & Log Trips	Chinook	Coho	Sockeye	Halibut	Observed Fishing	Flight Time	Expanded Fishing
29-May-2019	Wednesday		0							
30-May-2019	Thursday		0							
31-May-2019	Friday		0							
01-Jun-2019	Saturday	frequent whitecaps	3							
02-Jun-2019	Sunday	frequent whitecaps	3					35	1046	45
03-Jun-2019	Monday		0							
04-Jun-2019	Tuesday		0							
05-Jun-2019	Wednesday	choppy	3							
06-Jun-2019	Thursday		0							
07-Jun-2019	Friday	frequent whitecaps	2				1	3	1055	5
08-Jun-2019	Saturday	frequent whitecaps	3							
09-Jun-2019	Sunday	calm/rippled	1				1	69	1051	87
10-Jun-2019	Monday	calm/rippled	9				6			
11-Jun-2019	Tuesday	choppy	1							
12-Jun-2019	Wednesday	choppy	2							
13-Jun-2019	Thursday		0					7	1051	9
14-Jun-2019	Friday		0							
15-Jun-2019	Saturday	choppy	17							
16-Jun-2019	Sunday	frequent whitecaps	2							
17-Jun-2019	Monday	frequent whitecaps	2							
18-Jun-2019	Tuesday		0							
19-Jun-2019	Wednesday		0					0	1051	0
20-Jun-2019	Thursday		0							
21-Jun-2019	Friday		0							
22-Jun-2019	Saturday		0					6	1052	7
23-Jun-2019	Sunday		0							
24-Jun-2019	Monday		0							
25-Jun-2019	Tuesday		0							
26-Jun-2019	Wednesday		0					47	1048	60
27-Jun-2019	Thursday		0							
28-Jun-2019	Friday		0							
29-Jun-2019	Saturday	choppy	4					42	1051	52
30-Jun-2019	Sunday		0							
01-Jul-2019	Monday (Canada Day)		0							
02-Jul-2019	Tuesday		0							
03-Jul-2019	Wednesday		0							
	Totals	choppy	19				7	14*		19*
	Totals	choppy	33				1	38*		48*

* Average number of boats Observed and Expanded

Table 3: Simple area based cpue (catch per boat trip) expansion.

Day Type	Average Expanded Boats	Number of Days	Total Estimated Effort	CPUE				Retained			
				Chinook	Coho	Sockeye	Halibut	Chinook	Coho	Sockeye	Halibut
Weekend	48	10	480				0.03				14
Midweek	19	20	380				0.3680				140

Table 4: Recent years estimates of retained catch and effort.

Year	Month	Total Effort	Chinook Kept	Coho Kept	Sockeye Kept	Halibut Kept
2014	June	1656	264			684
2015	June	1555	425			68
2016	June	2004	430			133
2017	June	840	212			214
2018	June	2391	266	1		68
2019	June	982	0			225
5-Yr Avg	June	1689	319	1		233

Table 5: Sport Head Recovery Review.

Species	Creel Marked Catch	Creel Mark Rate	Creel Submission Rate	iRec Marked Catch	iRec Mark Rate	iRec Submission Rate	Sport Head Recoveries
---------	--------------------	-----------------	-----------------------	-------------------	----------------	----------------------	-----------------------

Table 6: Guided Proprtions Review.

Data Source	Interviews / Angler Days	Guided Proportion
Creel Interivews	63	3%
iRec Anglers	1489	26%
iRec Responses	47	4%

Figure 1: Proportion of each day's fishing by hour.

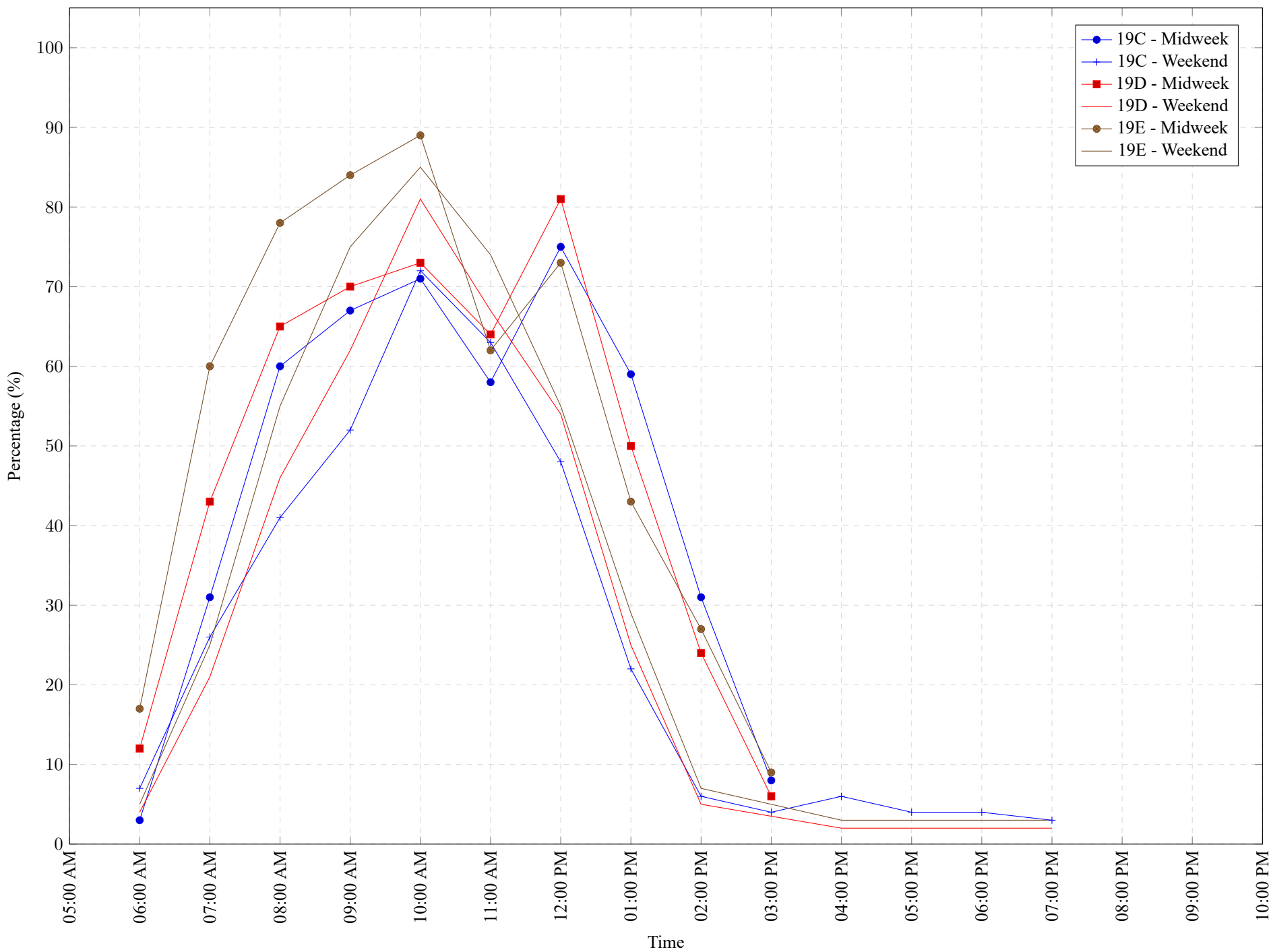


Table 7: Proportion of each day's fishing by hour.

Areas	Day Type	6:00 AM	7:00 AM	8:00 AM	9:00 AM	10:00 AM	11:00 AM	12:00 PM	01:00 PM	02:00 PM	03:00 PM	04:00 PM	05:00 PM	06:00 PM	07:00 PM	08:00 PM	09:00 PM	10:00 PM
19C	Midweek	3%	31%	60%	67%	71%	58%	75%	59%	31%	8%	0%	0%	0%	0%	0%	0%	0%
19C	Weekend	7%	26%	41%	52%	72%	63%	48%	22%	6%	4%	6%	4%	4%	3%	0%	0%	0%
19D	Midweek	12%	43%	65%	70%	73%	64%	81%	50%	24%	6%	0%	0%	0%	0%	0%	0%	0%
19D	Weekend	4%	21%	46%	62%	81%	67%	54%	25%	5%	0%	2%	2%	2%	2%	0%	0%	0%
19E	Midweek	17%	60%	78%	84%	89%	62%	73%	43%	27%	9%	0%	0%	0%	0%	0%	0%	0%
19E	Weekend	5%	25%	55%	75%	85%	74%	55%	29%	7%	0%	3%	3%	3%	3%	0%	0%	0%

Table 8: Daily Fishing Conditions.

Date	Day Type	Becher Bay	Cattle Point	Flemming	Pedder Bay
29 May 2019	Midweek				
30 May 2019	Midweek				
31 May 2019	Midweek				
01 Jun 2019	Weekend				frequent whitecaps
02 Jun 2019	Weekend		frequent whitecaps		
03 Jun 2019	Midweek				
04 Jun 2019	Midweek				
05 Jun 2019	Midweek		choppy		
06 Jun 2019	Midweek				
07 Jun 2019	Midweek				frequent whitecaps
08 Jun 2019	Weekend			frequent whitecaps	
09 Jun 2019	Weekend	calm/rippled			
10 Jun 2019	Midweek	calm/rippled		calm/rippled	
11 Jun 2019	Midweek				choppy
12 Jun 2019	Midweek			choppy	
13 Jun 2019	Midweek				
14 Jun 2019	Midweek				
15 Jun 2019	Weekend		calm/rippled		frequent whitecaps
16 Jun 2019	Weekend				frequent whitecaps
17 Jun 2019	Midweek		frequent whitecaps		
18 Jun 2019	Midweek				
19 Jun 2019	Midweek				
20 Jun 2019	Midweek				
21 Jun 2019	Midweek				
22 Jun 2019	Weekend				
23 Jun 2019	Weekend				
24 Jun 2019	Midweek				
25 Jun 2019	Midweek				
26 Jun 2019	Midweek				
27 Jun 2019	Midweek				
28 Jun 2019	Midweek				
29 Jun 2019	Weekend			choppy	
30 Jun 2019	Weekend				
01 Jul 2019	Weekend				
02 Jul 2019	Midweek				
03 Jul 2019	Midweek				