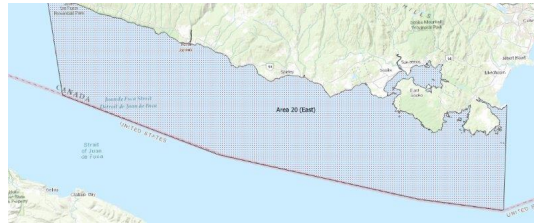


FISHERIES AND OCEANS CANADA

SOUTH COAST ASSESSMENT BULLETIN

CREEL SURVEY DATA REVIEW PACKAGE

Area 20 (East) June 2019



Prepared By:

South Coast Salmon Stock Assessment Section

Thursday 27th August, 2020



Fisheries and Oceans
Canada

Pêches et Océans
Canada



Table 1: Numbers of Interviews conducted contributing to the area by day and access site.

Date	Day Type	Becher Bay		Jock's Dock (Crab Shack)		Pedder Bay	
		AM	PM	AM	PM	AM	PM
29 May 2019	Midweek						
30 May 2019	Midweek				6		
31 May 2019	Midweek						
01 Jun 2019	Weekend			1			4
02 Jun 2019	Weekend		2				
03 Jun 2019	Midweek						
04 Jun 2019	Midweek						
05 Jun 2019	Midweek						
06 Jun 2019	Midweek						
07 Jun 2019	Midweek						
08 Jun 2019	Weekend						
09 Jun 2019	Weekend	5			6		
10 Jun 2019	Midweek	2					
11 Jun 2019	Midweek						3
12 Jun 2019	Midweek						
13 Jun 2019	Midweek			2			
14 Jun 2019	Midweek				3		
15 Jun 2019	Weekend					8	
16 Jun 2019	Weekend						1
17 Jun 2019	Midweek						
18 Jun 2019	Midweek			2			
19 Jun 2019	Midweek						
20 Jun 2019	Midweek						
21 Jun 2019	Midweek		1				
22 Jun 2019	Weekend						
23 Jun 2019	Weekend						
24 Jun 2019	Midweek				2		
25 Jun 2019	Midweek						
26 Jun 2019	Midweek						
27 Jun 2019	Midweek						
28 Jun 2019	Midweek						
29 Jun 2019	Weekend						
30 Jun 2019	Weekend						
01 Jul 2019	Weekend						
02 Jul 2019	Midweek						
03 Jul 2019	Midweek						

Table 2: Daily tally of interviews, catch and effort.

Date	Day	Average Fishing Conditions	Interviews & Log Trips	Chinook	Coho	Sockeye	Halibut	Observed Fishing	Flight Time	Expanded Fishing
29-May-2019	Wednesday		0							
30-May-2019	Thursday	frequent whitecaps	6				1			
31-May-2019	Friday		0							
01-Jun-2019	Saturday	frequent whitecaps	5							
02-Jun-2019	Sunday	frequent whitecaps	2					3	1022	4
03-Jun-2019	Monday		0							
04-Jun-2019	Tuesday		0							
05-Jun-2019	Wednesday		0							
06-Jun-2019	Thursday		0							
07-Jun-2019	Friday		0					8	1034	10
08-Jun-2019	Saturday		0							
09-Jun-2019	Sunday	calm/rippled	11		9			57	1032	68
10-Jun-2019	Monday	calm/rippled	2							
11-Jun-2019	Tuesday	choppy	3							
12-Jun-2019	Wednesday		0							
13-Jun-2019	Thursday	choppy	2					0	1030	0
14-Jun-2019	Friday	choppy	4		6					
15-Jun-2019	Saturday	frequent whitecaps	9		13					
16-Jun-2019	Sunday	frequent whitecaps	1							
17-Jun-2019	Monday		0							
18-Jun-2019	Tuesday	choppy	2							
19-Jun-2019	Wednesday		0					4	1033	5
20-Jun-2019	Thursday		1		2					
21-Jun-2019	Friday	choppy	1							
22-Jun-2019	Saturday		0					22	1030	26
23-Jun-2019	Sunday		0							
24-Jun-2019	Monday	frequent whitecaps	2		1					
25-Jun-2019	Tuesday		1		2					
26-Jun-2019	Wednesday		1					27	1031	33
27-Jun-2019	Thursday		1	2						
28-Jun-2019	Friday		0							
29-Jun-2019	Saturday		0					97	1029	115
30-Jun-2019	Sunday		0							
01-Jul-2019	Monday (Canada Day)		0							
02-Jul-2019	Tuesday		0							
03-Jul-2019	Wednesday		0							
	Totals	choppy	20	2	11			10*		12*
	Totals	frequent whitecaps	28		22			45*		53*

* Average number of boats Observed and Expanded

Table 3: Simple area based cpue (catch per boat trip) expansion.

Day Type	Average Expanded Boats	Number of Days	Total Estimated Effort	CPUE				Retained			
				Chinook	Coho	Sockeye	Halibut	Chinook	Coho	Sockeye	Halibut
Weekend	53	10	530		0.7860				417		
Midweek	12	20	240	0.10	0.55			24	132		

Table 4: Recent years estimates of retained catch and effort.

Year	Month	Total Effort	Chinook Kept	Coho Kept	Sockeye Kept	Halibut Kept
2014	June	4014	2718			169
2015	June	4058	3432	349		173
2016	June	2735	882	36		210
2017	June	2578	1448	261		334
2018	June	3731	1950	143		
2019	June	1038	2	548		0
5-Yr Avg	June	3423	2086	197		222

Table 5: Sport Head Recovery Review.

Species	Creel Marked Catch	Creel Mark Rate	Creel Submission Rate	iRec Marked Catch	iRec Mark Rate	iRec Submission Rate	Sport Head Recoveries
Coho	567	100%	11%	186	85%	32%	60
Chinook	2	100%	100%	0	0%		2

Table 6: Guided Proprtions Review.

Data Source	Interviews / Angler Days	Guided Proportion
Creel Interivews	139	5%
iRec Anglers	1575	23%
iRec Responses	55	5%

Figure 1: Proportion of each day's fishing by hour.

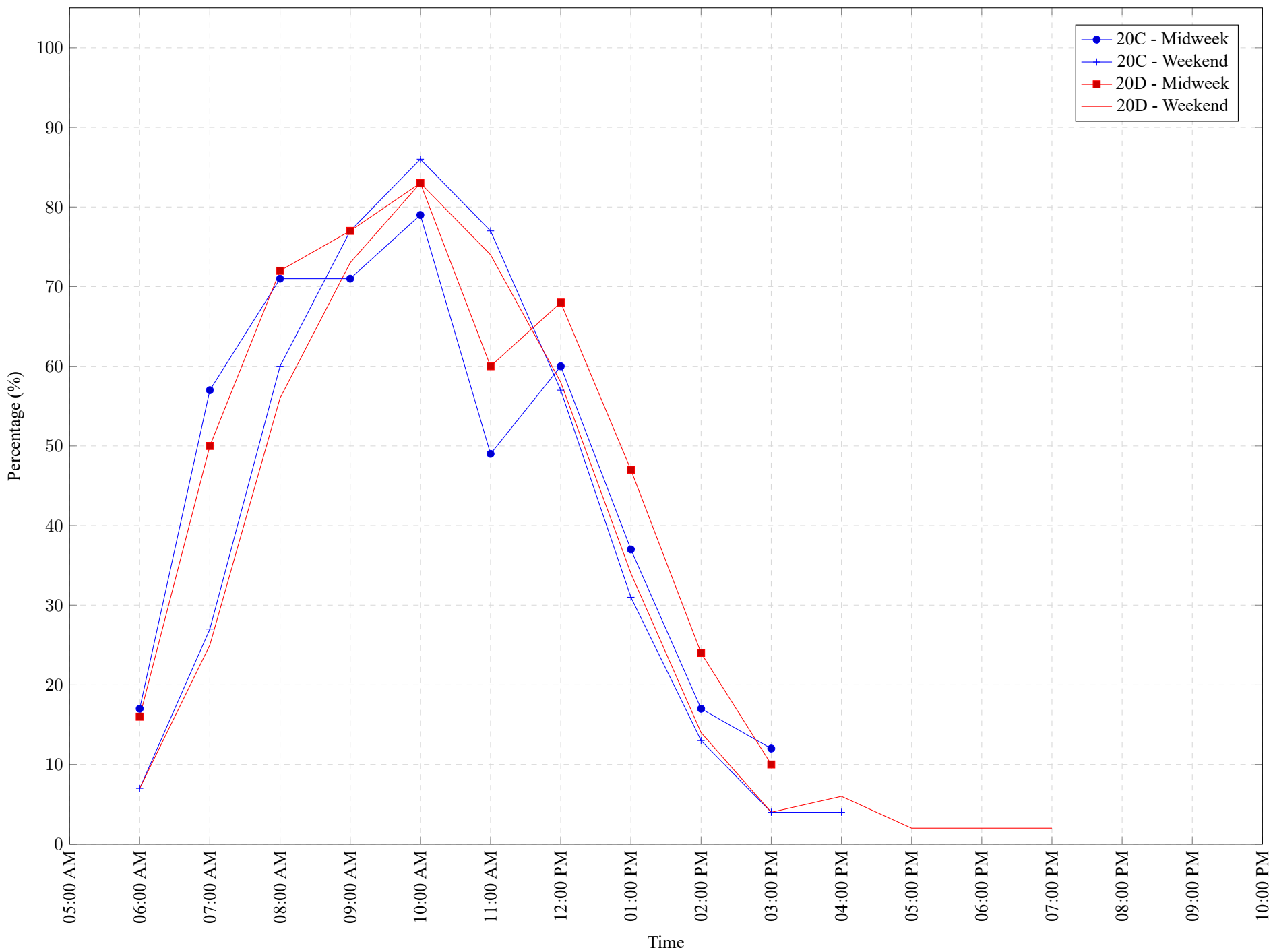


Table 7: Proportion of each day's fishing by hour.

Areas	Day Type	6:00 AM	7:00 AM	8:00 AM	9:00 AM	10:00 AM	11:00 AM	12:00 PM	01:00 PM	02:00 PM	03:00 PM	04:00 PM	05:00 PM	06:00 PM	07:00 PM	08:00 PM	09:00 PM	10:00 PM
20C	Midweek	17%	57%	71%	71%	79%	49%	60%	37%	17%	12%	0%	0%	0%	0%	0%	0%	0%
20C	Weekend	7%	27%	60%	77%	86%	77%	57%	31%	13%	4%	4%	0%	0%	0%	0%	0%	0%
20D	Midweek	16%	50%	72%	77%	83%	60%	68%	47%	24%	10%	0%	0%	0%	0%	0%	0%	0%
20D	Weekend	7%	25%	56%	73%	83%	74%	58%	34%	14%	4%	6%	2%	2%	2%	0%	0%	0%

Table 8: Daily Fishing Conditions.

Date	Day Type	Becher Bay	Jock's Dock (Crab Shack)	Pedder Bay
29 May 2019	Midweek			
30 May 2019	Midweek		frequent whitecaps	
31 May 2019	Midweek			
01 Jun 2019	Weekend		frequent whitecaps	frequent whitecaps
02 Jun 2019	Weekend	frequent whitecaps		
03 Jun 2019	Midweek			
04 Jun 2019	Midweek			
05 Jun 2019	Midweek			
06 Jun 2019	Midweek			
07 Jun 2019	Midweek			
08 Jun 2019	Weekend			
09 Jun 2019	Weekend	calm/rippled	calm/rippled	
10 Jun 2019	Midweek	calm/rippled		
11 Jun 2019	Midweek			choppy
12 Jun 2019	Midweek			
13 Jun 2019	Midweek		choppy	
14 Jun 2019	Midweek		choppy	
15 Jun 2019	Weekend			frequent whitecaps
16 Jun 2019	Weekend			frequent whitecaps
17 Jun 2019	Midweek			
18 Jun 2019	Midweek		choppy	
19 Jun 2019	Midweek			
20 Jun 2019	Midweek			
21 Jun 2019	Midweek	choppy		
22 Jun 2019	Weekend			
23 Jun 2019	Weekend			
24 Jun 2019	Midweek		frequent whitecaps	
25 Jun 2019	Midweek			
26 Jun 2019	Midweek			
27 Jun 2019	Midweek			
28 Jun 2019	Midweek			
29 Jun 2019	Weekend			
30 Jun 2019	Weekend			
01 Jul 2019	Weekend			
02 Jul 2019	Midweek			
03 Jul 2019	Midweek			