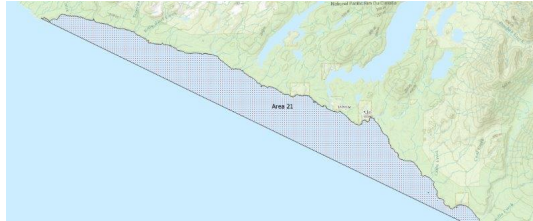


FISHERIES AND OCEANS CANADA

SOUTH COAST ASSESSMENT BULLETIN

CREEL SURVEY DATA REVIEW PACKAGE

Area 21 June 2019



Prepared By:

South Coast Salmon Stock Assessment Section

Thursday 27th August, 2020



Fisheries and Oceans
Canada

Pêches et Océans
Canada

**your
catch
counts**

Table 1: Numbers of Interviews conducted contributing to the area by day and access site.

Date	Day Type	Pacific Gateway Marina		Port Renfrew Marina	
		MD	PM	MD	PM
29 May 2019	Midweek				
30 May 2019	Midweek				
31 May 2019	Midweek				
01 Jun 2019	Weekend				
02 Jun 2019	Weekend	7			
03 Jun 2019	Midweek				
04 Jun 2019	Midweek				
05 Jun 2019	Midweek				
06 Jun 2019	Midweek				
07 Jun 2019	Midweek			1	
08 Jun 2019	Weekend	7			
09 Jun 2019	Weekend				2
10 Jun 2019	Midweek	5			
11 Jun 2019	Midweek				
12 Jun 2019	Midweek				
13 Jun 2019	Midweek				
14 Jun 2019	Midweek			2	
15 Jun 2019	Weekend	4			
16 Jun 2019	Weekend			2	
17 Jun 2019	Midweek	5			
18 Jun 2019	Midweek				
19 Jun 2019	Midweek				
20 Jun 2019	Midweek				
21 Jun 2019	Midweek				
22 Jun 2019	Weekend				
23 Jun 2019	Weekend				
24 Jun 2019	Midweek		4		
25 Jun 2019	Midweek			1	
26 Jun 2019	Midweek	4			
27 Jun 2019	Midweek				
28 Jun 2019	Midweek	6			
29 Jun 2019	Weekend			3	
30 Jun 2019	Weekend	7			
01 Jul 2019	Weekend				
02 Jul 2019	Midweek				
03 Jul 2019	Midweek				

Table 2: Daily tally of interviews, catch and effort.

Date	Day	Average Fishing Conditions	Interviews & Log Trips	Chinook	Coho	Sockeye	Halibut	Observed Fishing	Flight Time	Expanded Fishing
29-May-2019	Wednesday		0							
30-May-2019	Thursday		0							
31-May-2019	Friday		0							
01-Jun-2019	Saturday		0							
02-Jun-2019	Sunday	frequent whitecaps	7	15	2			3	0946	4
03-Jun-2019	Monday		0							
04-Jun-2019	Tuesday		0					3	0842	4
05-Jun-2019	Wednesday		0							
06-Jun-2019	Thursday		0							
07-Jun-2019	Friday	calm/rippled	1				2			
08-Jun-2019	Saturday	calm/rippled	8	14	3			5	0849	6
09-Jun-2019	Sunday	calm/rippled	3	3			1			
10-Jun-2019	Monday	choppy	5	5	7					
11-Jun-2019	Tuesday		0							
12-Jun-2019	Wednesday		0					0	0840	0
13-Jun-2019	Thursday		0							
14-Jun-2019	Friday	calm/rippled	2				2			
15-Jun-2019	Saturday	calm/rippled	4	6			1	5	0809	6
16-Jun-2019	Sunday	choppy	2							
17-Jun-2019	Monday	frequent whitecaps	5	3						
18-Jun-2019	Tuesday		0					1	0845	1
19-Jun-2019	Wednesday		0							
20-Jun-2019	Thursday		0							
21-Jun-2019	Friday		0							
22-Jun-2019	Saturday		1	4				11	1015	13
23-Jun-2019	Sunday		1	6						
24-Jun-2019	Monday	choppy	4	2				3	0848	4
25-Jun-2019	Tuesday	choppy	1				1			
26-Jun-2019	Wednesday	calm/rippled	4	5			3			
27-Jun-2019	Thursday		1	4						
28-Jun-2019	Friday	choppy	6	4	4					
29-Jun-2019	Saturday	calm/rippled	3							
30-Jun-2019	Sunday	choppy	8	23						
01-Jul-2019	Monday (Canada Day)		0							
02-Jul-2019	Tuesday		0							
03-Jul-2019	Wednesday		0					3	0830	3
	Totals	choppy	29	23	11		8	2*		2*
	Totals	choppy	37	71	5		2	6*		7*

* Average number of boats Observed and Expanded

Table 3: Simple area based cpue (catch per boat trip) expansion.

Day Type	Average Expanded Boats	Number of Days	Total Estimated Effort	CPUE				Retained			
				Chinook	Coho	Sockeye	Halibut	Chinook	Coho	Sockeye	Halibut
Weekend	7	10	70	1.9190	0.1350		0.0540	134	9		4
Midweek	2	20	40	0.7930	0.3790		0.2760	32	15		11

Table 4: Recent years estimates of retained catch and effort.

Year	Month	Total Effort	Chinook Kept	Coho Kept	Sockeye Kept	Halibut Kept
2014	June	35	20			42
2015	June	106	480		6	10
2016	June	84	77	16		33
2017	June	93	180			5
2018	June	107	398			10
2019	June	112	168	22		16
5-Yr Avg	June	85	231	16	6	20

Table 5: Sport Head Recovery Review.

Species	Creel Marked Catch	Creel Mark Rate	Creel Submission Rate	iRec Marked Catch	iRec Mark Rate	iRec Submission Rate	Sport Head Recoveries
Coho	22	100%	18%		%		4
Chinook	84	50%	44%	108	57%	34%	37

Table 6: Guided Proprtions Review.

Data Source	Interviews / Angler Days	Guided Proportion
Creel Interivews	66	74%
iRec Anglers	619	72%
iRec Responses	22	36%

Figure 1: Proportion of each day's fishing by hour.

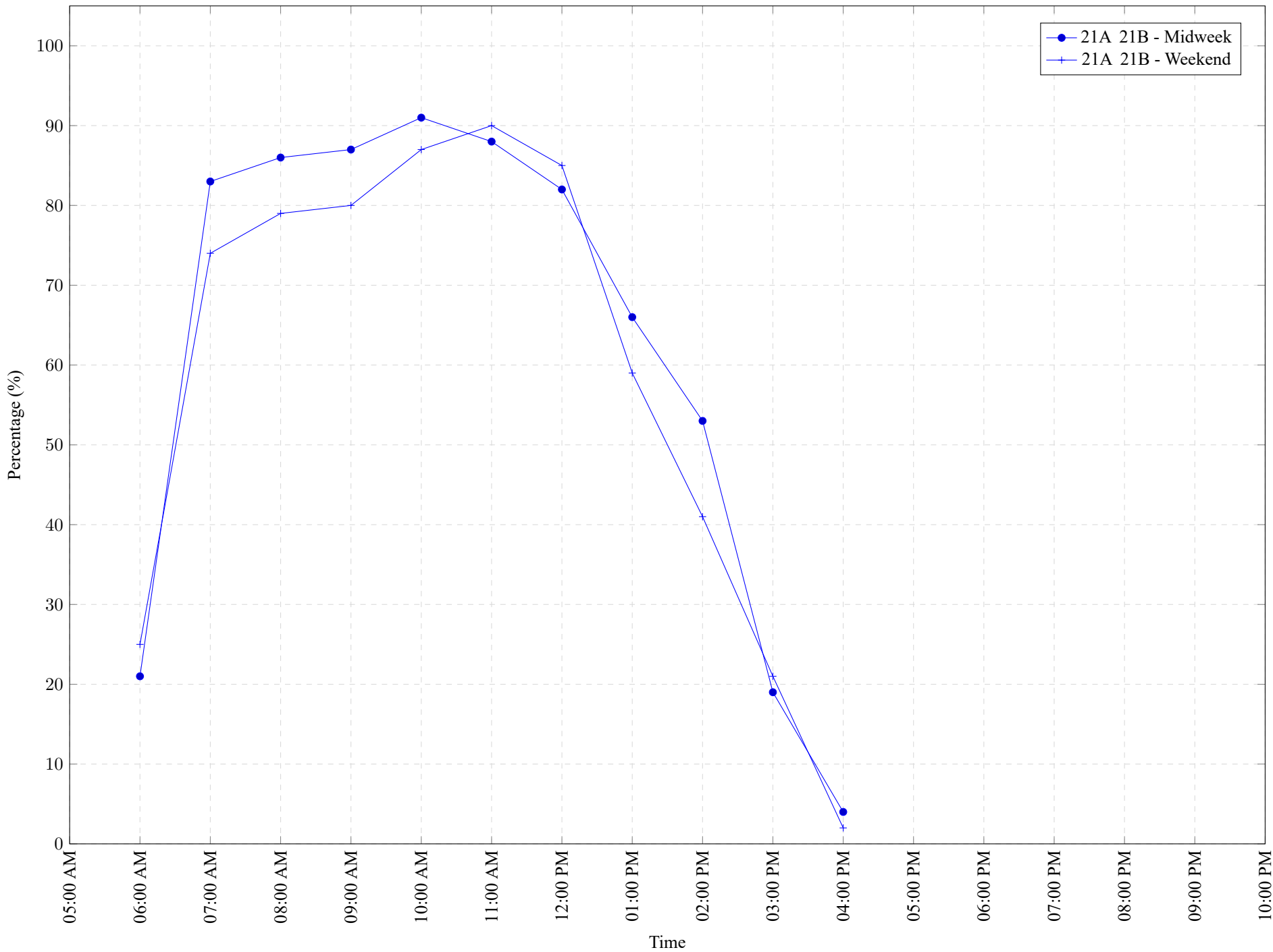


Table 7: Proportion of each day's fishing by hour.

Areas		Day Type	6:00 AM	7:00 AM	8:00 AM	9:00 AM	10:00 AM	11:00 AM	12:00 PM	01:00 PM	02:00 PM	03:00 PM	04:00 PM	05:00 PM	06:00 PM	07:00 PM	08:00 PM	09:00 PM	10:00 PM
21A	21B	Midweek	21%	83%	86%	87%	91%	88%	82%	66%	53%	19%	4%	0%	0%	0%	0%	0%	0%
21A	21B	Weekend	25%	74%	79%	80%	87%	90%	85%	59%	41%	21%	2%	0%	0%	0%	0%	0%	0%

Table 8: Daily Fishing Conditions.

Date	Day Type	Pacific Gateway Marina	Port Renfrew Marina
29 May 2019	Midweek		
30 May 2019	Midweek		
31 May 2019	Midweek		
01 Jun 2019	Weekend		
02 Jun 2019	Weekend	frequent whitecaps	
03 Jun 2019	Midweek		
04 Jun 2019	Midweek		
05 Jun 2019	Midweek		
06 Jun 2019	Midweek		
07 Jun 2019	Midweek		calm/rippled
08 Jun 2019	Weekend	calm/rippled	
09 Jun 2019	Weekend		calm/rippled
10 Jun 2019	Midweek	choppy	
11 Jun 2019	Midweek		
12 Jun 2019	Midweek		
13 Jun 2019	Midweek		
14 Jun 2019	Midweek		calm/rippled
15 Jun 2019	Weekend	calm/rippled	
16 Jun 2019	Weekend		choppy
17 Jun 2019	Midweek	frequent whitecaps	
18 Jun 2019	Midweek		
19 Jun 2019	Midweek		
20 Jun 2019	Midweek		
21 Jun 2019	Midweek		
22 Jun 2019	Weekend		
23 Jun 2019	Weekend		
24 Jun 2019	Midweek	choppy	
25 Jun 2019	Midweek		choppy
26 Jun 2019	Midweek	calm/rippled	
27 Jun 2019	Midweek		
28 Jun 2019	Midweek	choppy	
29 Jun 2019	Weekend		calm/rippled
30 Jun 2019	Weekend	choppy	
01 Jul 2019	Weekend		
02 Jul 2019	Midweek		
03 Jul 2019	Midweek		