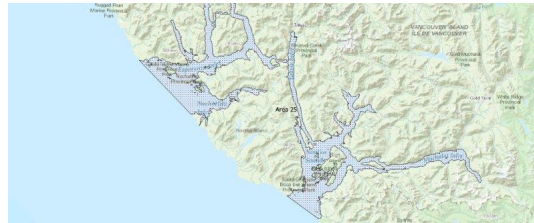


FISHERIES AND OCEANS CANADA

SOUTH COAST ASSESSMENT BULLETIN

CREEL SURVEY DATA REVIEW PACKAGE

Area 25 June 2019



Prepared By:

South Coast Salmon Stock Assessment Section

Thursday 27th August, 2020



Fisheries and Oceans
Canada

Pêches et Océans
Canada



Table 1: Numbers of Interviews conducted contributing to the area by day and access site.

Date	Day Type	Cougar Creek			Moutcha Bay Resort		Westview Marina		
		AM	MD	PM	AM	MD	AM	MD	PM
29 May 2019	Midweek								
30 May 2019	Midweek								
31 May 2019	Midweek								
01 Jun 2019	Weekend								
02 Jun 2019	Weekend								
03 Jun 2019	Midweek								
04 Jun 2019	Midweek								
05 Jun 2019	Midweek								
06 Jun 2019	Midweek								
07 Jun 2019	Midweek								
08 Jun 2019	Weekend								
09 Jun 2019	Weekend								
10 Jun 2019	Midweek								
11 Jun 2019	Midweek								
12 Jun 2019	Midweek								
13 Jun 2019	Midweek								
14 Jun 2019	Midweek								
15 Jun 2019	Weekend								
16 Jun 2019	Weekend	4						10	
17 Jun 2019	Midweek	2						5	
18 Jun 2019	Midweek								
19 Jun 2019	Midweek					2			
20 Jun 2019	Midweek							5	
21 Jun 2019	Midweek						2		
22 Jun 2019	Weekend							9	
23 Jun 2019	Weekend								
24 Jun 2019	Midweek			3					10
25 Jun 2019	Midweek	2							
26 Jun 2019	Midweek								
27 Jun 2019	Midweek								
28 Jun 2019	Midweek	3						3	
29 Jun 2019	Weekend				5				
30 Jun 2019	Weekend							8	
01 Jul 2019	Weekend								
02 Jul 2019	Midweek							9	
03 Jul 2019	Midweek		8					6	

Table 2: Daily tally of interviews, catch and effort.

Date	Day	Average Fishing Conditions	Interviews & Log Trips	Chinook	Coho	Sockeye	Halibut	Observed Fishing	Flight Time	Expanded Fishing
29-May-2019	Wednesday		0							
30-May-2019	Thursday		0							
31-May-2019	Friday		0							
01-Jun-2019	Saturday		0							
02-Jun-2019	Sunday		0							
03-Jun-2019	Monday		0							
04-Jun-2019	Tuesday		0							
05-Jun-2019	Wednesday		0							
06-Jun-2019	Thursday		0							
07-Jun-2019	Friday		1	1						
08-Jun-2019	Saturday		2				26			
09-Jun-2019	Sunday		0							
10-Jun-2019	Monday		2				18			
11-Jun-2019	Tuesday		0							
12-Jun-2019	Wednesday		0							
13-Jun-2019	Thursday		0							
14-Jun-2019	Friday		1	1						
15-Jun-2019	Saturday		0							
16-Jun-2019	Sunday	choppy	14	8			2	28	0840	36
17-Jun-2019	Monday	choppy	9	3			2			
18-Jun-2019	Tuesday		1	1						
19-Jun-2019	Wednesday	frequent whitecaps	5	5	4			26	0727	54
20-Jun-2019	Thursday	calm/rippled	7	3			1			
21-Jun-2019	Friday	calm/rippled	3	2						
22-Jun-2019	Saturday	calm/rippled	11	4				53	0657	116
23-Jun-2019	Sunday		1	1						
24-Jun-2019	Monday	choppy	14	18	2					
25-Jun-2019	Tuesday	choppy	4	1			5	50	0758	93
26-Jun-2019	Wednesday		0							
27-Jun-2019	Thursday		1	1						
28-Jun-2019	Friday	choppy	7	7						
29-Jun-2019	Saturday	calm/rippled	6	5	1					
30-Jun-2019	Sunday	calm/rippled	9	11	13		2	86	0725	123
01-Jul-2019	Monday (Canada Day)		2	5	4					
02-Jul-2019	Tuesday	calm/rippled	10	38	8		1			
03-Jul-2019	Wednesday	choppy	16	46	14		38	52	0800	99
	Totals	choppy	55	43	6		26	38*		74*
	Totals	calm/rippled	43	29	14		30	56*		92*

* Average number of boats Observed and Expanded

Table 3: Simple area based cpue (catch per boat trip) expansion.

Day Type	Average Expanded Boats	Number of Days	Total Estimated Effort	CPUE				Retained			
				Chinook	Coho	Sockeye	Halibut	Chinook	Coho	Sockeye	Halibut
Weekend	92	10	920	0.6740	0.3260		0.6980	620	300		642
Midweek	74	20	1480	0.7820	0.1090		0.4730	1157	161		700

Table 4: Recent years estimates of retained catch and effort.

Year	Month	Total Effort	Chinook Kept	Coho Kept	Sockeye Kept	Halibut Kept
2016	June	491	490			130
2017	June	1344	1803	289		117
2018	June	1473	927	516	39	482
2019	June	1236	1229	304		56
5-Yr Avg	June	1103	1073	403	39	243

Table 5: Sport Head Recovery Review.

Species	Creel Marked Catch	Creel Mark Rate	Creel Submission Rate	iRec Marked Catch	iRec Mark Rate	iRec Submission Rate	Sport Head Recoveries
Coho	59	19%	19%	146	22%	8%	11
Chinook	243	20%	31%	470	19%	16%	75

Table 6: Guided Proprtions Review.

Data Source	Interviews / Angler Days	Guided Proportion
Creel Interivews	317	37%
iRec Anglers	3471	46%
iRec Responses	133	62%

Figure 1: Proportion of each day's fishing by hour.

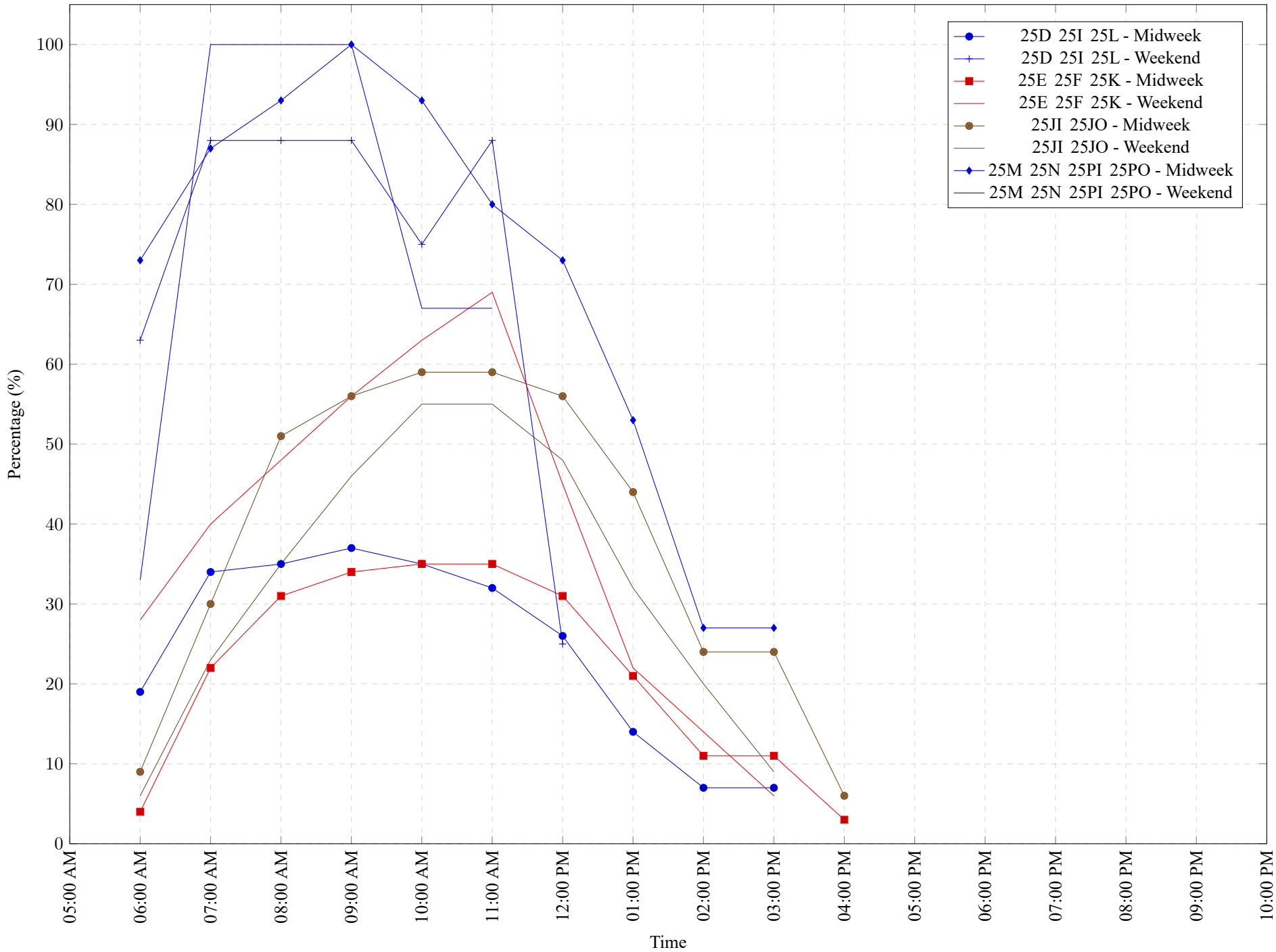


Table 7: Proportion of each day's fishing by hour.

Areas	Day Type	6:00	7:00	8:00	9:00	10:00	11:00	12:00	01:00	02:00	03:00	04:00	05:00	06:00	07:00	08:00	09:00	10:00
		AM	AM	AM	AM	AM	AM	PM	PM	PM	PM	PM	PM	PM	PM	PM	PM	PM
25D 25I 25L	Midweek	19%	34%	35%	37%	35%	32%	26%	14%	7%	7%	0%	0%	0%	0%	0%	0%	0%
25D 25I 25L	Weekend	63%	88%	88%	88%	75%	88%	25%	0%	0%	0%	0%	0%	0%	0%	0%	0%	0%
25E 25F 25K	Midweek	4%	22%	31%	34%	35%	35%	31%	21%	11%	11%	3%	0%	0%	0%	0%	0%	0%
25E 25F 25K	Weekend	28%	40%	48%	56%	63%	69%	45%	22%	14%	6%	0%	0%	0%	0%	0%	0%	0%
25JI 25JO	Midweek	9%	30%	51%	56%	59%	59%	56%	44%	24%	24%	6%	0%	0%	0%	0%	0%	0%
25JI 25JO	Weekend	6%	23%	35%	46%	55%	55%	48%	32%	20%	9%	0%	0%	0%	0%	0%	0%	0%
25M 25N 25PI 25PO	Midweek	73%	87%	93%	100%	93%	80%	73%	53%	27%	27%	0%	0%	0%	0%	0%	0%	0%
25M 25N 25PI 25PO	Weekend	33%	100%	100%	100%	67%	67%	0%	0%	0%	0%	0%	0%	0%	0%	0%	0%	0%

Table 8: Daily Fishing Conditions.

Date	Day Type	Cougar Creek	Moutcha Bay Resort	Westview Marina
29 May 2019	Midweek			
30 May 2019	Midweek			
31 May 2019	Midweek			
01 Jun 2019	Weekend			
02 Jun 2019	Weekend			
03 Jun 2019	Midweek			
04 Jun 2019	Midweek			
05 Jun 2019	Midweek			
06 Jun 2019	Midweek			
07 Jun 2019	Midweek			
08 Jun 2019	Weekend			
09 Jun 2019	Weekend			
10 Jun 2019	Midweek			
11 Jun 2019	Midweek			
12 Jun 2019	Midweek			
13 Jun 2019	Midweek			
14 Jun 2019	Midweek			
15 Jun 2019	Weekend			
16 Jun 2019	Weekend	choppy		choppy
17 Jun 2019	Midweek	choppy		choppy
18 Jun 2019	Midweek			
19 Jun 2019	Midweek		frequent whitecaps	
20 Jun 2019	Midweek			calm/rippled
21 Jun 2019	Midweek			calm/rippled
22 Jun 2019	Weekend			calm/rippled
23 Jun 2019	Weekend			calm/rippled
24 Jun 2019	Midweek	frequent whitecaps		calm/rippled
25 Jun 2019	Midweek	choppy		
26 Jun 2019	Midweek			
27 Jun 2019	Midweek			
28 Jun 2019	Midweek	choppy		calm/rippled
29 Jun 2019	Weekend		calm/rippled	
30 Jun 2019	Weekend			calm/rippled
01 Jul 2019	Weekend			
02 Jul 2019	Midweek			calm/rippled
03 Jul 2019	Midweek	frequent whitecaps		calm/rippled