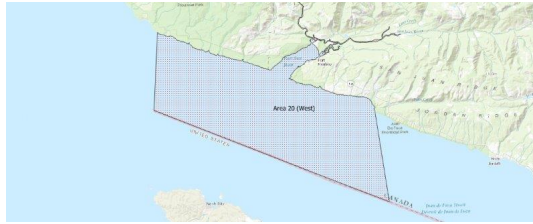


FISHERIES AND OCEANS CANADA

SOUTH COAST ASSESSMENT BULLETIN

CREEL SURVEY DATA REVIEW PACKAGE

Area 20 (West) July 2019



Prepared By:

South Coast Salmon Stock Assessment Section

Thursday 27th August, 2020



Fisheries and Oceans
Canada

Pêches et Océans
Canada



Table 1: Numbers of Interviews conducted contributing to the area by day and access site.

Date	Day Type	Pacific Gateway Marina		Port Renfrew Marina		
		AM	MD	AM	MD	PM
28 Jun 2019	Midweek		2			
29 Jun 2019	Weekend				18	
30 Jun 2019	Weekend		1			
01 Jul 2019	Weekend					
02 Jul 2019	Midweek					
03 Jul 2019	Midweek					
04 Jul 2019	Midweek					2
05 Jul 2019	Midweek		1			
06 Jul 2019	Weekend				6	
07 Jul 2019	Weekend					
08 Jul 2019	Midweek				1	
09 Jul 2019	Midweek					
10 Jul 2019	Midweek					
11 Jul 2019	Midweek					
12 Jul 2019	Midweek					2
13 Jul 2019	Weekend				11	
14 Jul 2019	Weekend					
15 Jul 2019	Midweek			4		
16 Jul 2019	Midweek		3			
17 Jul 2019	Midweek					
18 Jul 2019	Midweek				12	
19 Jul 2019	Midweek		1			
20 Jul 2019	Weekend				15	
21 Jul 2019	Weekend					
22 Jul 2019	Midweek			2		
23 Jul 2019	Midweek					
24 Jul 2019	Midweek					
25 Jul 2019	Midweek		4			
26 Jul 2019	Midweek					2
27 Jul 2019	Weekend	3				
28 Jul 2019	Weekend				18	
29 Jul 2019	Midweek		4			
30 Jul 2019	Midweek					
31 Jul 2019	Midweek					
01 Aug 2019	Midweek					
02 Aug 2019	Midweek		7			
03 Aug 2019	Weekend					26

Table 2: Daily tally of interviews, catch and effort.

Date	Day	Average Fishing Conditions	Interviews & Log Trips	Chinook	Coho	Sockeye	Halibut	Observed Fishing	Flight Time	Expanded Fishing
28-Jun-2019	Friday	choppy	2				3			
29-Jun-2019	Saturday	calm/rippled	18		2					
30-Jun-2019	Sunday	choppy	1							
01-Jul-2019	Monday (Canada Day)		0							
02-Jul-2019	Tuesday		0							
03-Jul-2019	Wednesday		0							
04-Jul-2019	Thursday	calm/rippled	2							
05-Jul-2019	Friday	calm/rippled	1							
06-Jul-2019	Saturday	calm/rippled	6					13	0905	14
07-Jul-2019	Sunday		0							
08-Jul-2019	Monday	calm/rippled	1							
09-Jul-2019	Tuesday		0					10	0839	11
10-Jul-2019	Wednesday		0							
11-Jul-2019	Thursday		0							
12-Jul-2019	Friday	calm/rippled	2							
13-Jul-2019	Saturday	calm/rippled	11							
14-Jul-2019	Sunday		0							
15-Jul-2019	Monday	calm/rippled	4	6						
16-Jul-2019	Tuesday	calm/rippled	3	2						
17-Jul-2019	Wednesday		0							
18-Jul-2019	Thursday	choppy	12	13	1			96	0833	109
19-Jul-2019	Friday	frequent whitecaps	1	1						
20-Jul-2019	Saturday	calm/rippled	15	13				110	0844	123
21-Jul-2019	Sunday		0							
22-Jul-2019	Monday	choppy	2	3				8	0844	9
23-Jul-2019	Tuesday		1	3						
24-Jul-2019	Wednesday		1	2						
25-Jul-2019	Thursday	calm/rippled	5	5						
26-Jul-2019	Friday	calm/rippled	2							
27-Jul-2019	Saturday	choppy	4	5				203	0846	226
28-Jul-2019	Sunday	calm/rippled	19	17	1					
29-Jul-2019	Monday	choppy	4	12						
30-Jul-2019	Tuesday		0					18	0843	20
31-Jul-2019	Wednesday		0							
01-Aug-2019	Thursday		0							
02-Aug-2019	Friday	calm/rippled	7	23						
03-Aug-2019	Saturday	calm/rippled	26	22	2					
	Totals	calm/rippled	41	47	1			33*		37*
	Totals	calm/rippled	55	35	1			109*		121*

* Average number of boats Observed and Expanded

Table 3: Simple area based cpue (catch per boat trip) expansion.

Day Type	Average Expanded Boats	Number of Days	Total Estimated Effort	CPUE				Retained			
				Chinook	Coho	Sockeye	Halibut	Chinook	Coho	Sockeye	Halibut
Weekend	121	9	1089	0.6360	0.0180			693	20		
Midweek	37	22	814	1.1460	0.0240			933	20		

Table 4: Recent years estimates of retained catch and effort.

Year	Month	Total Effort	Chinook Kept	Coho Kept	Sockeye Kept	Halibut Kept
2014	July	1411	1267	101	8	8
2015	July	2147	2149	352	15	0
2016	July	1543	873	22	0	0
2017	July	1579	1818	114		10
2018	July	1961	1748	244		
2019	July	1041	869	31		0
5-Yr Avg	July	1728	1571	167	8	5

Table 5: Sport Head Recovery Review.

Species	Creel Marked Catch	Creel Mark Rate	Creel Submission Rate	iRec Marked Catch	iRec Mark Rate	iRec Submission Rate	Sport Head Recoveries
Coho	200	100%	38%	631	100%	12%	76
Chinook	277	35%	64%	231	44%	77%	178

Table 6: Guided Proprtions Review.

Data Source	Interviews / Angler Days	Guided Proportion
Creel Interivews	217	7%
iRec Anglers	6119	21%
iRec Responses	154	5%

Figure 1: Proportion of each day's fishing by hour.

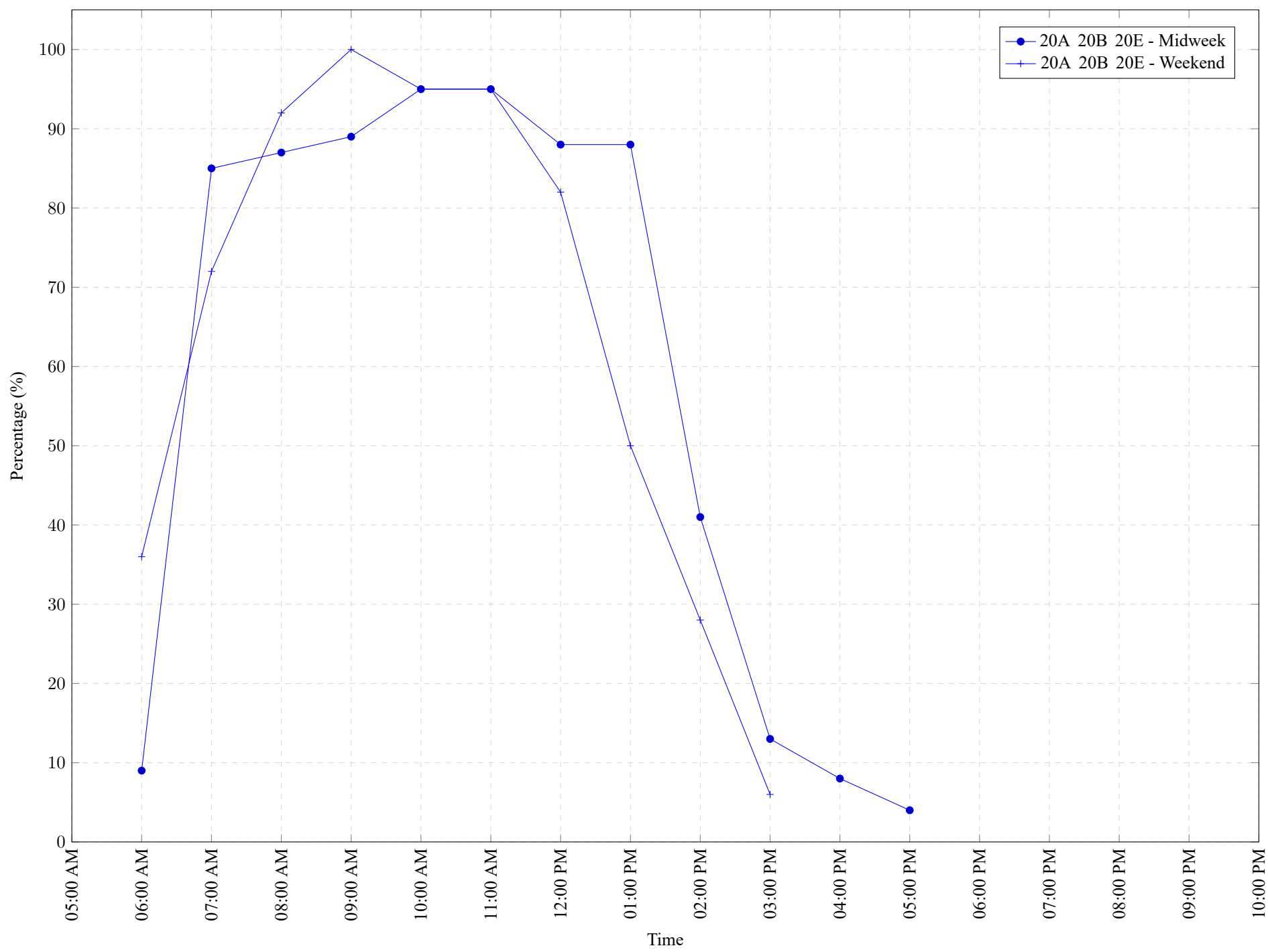


Table 7: Proportion of each day’s fishing by hour.

Areas			Day Type	6:00 AM	7:00 AM	8:00 AM	9:00 AM	10:00 AM	11:00 AM	12:00 PM	01:00 PM	02:00 PM	03:00 PM	04:00 PM	05:00 PM	06:00 PM	07:00 PM	08:00 PM	09:00 PM	10:00 PM
20A	20B	20E	Midweek	9%	85%	87%	89%	95%	95%	88%	88%	41%	13%	8%	4%	0%	0%	0%	0%	0%
20A	20B	20E	Weekend	36%	72%	92%	100%	95%	95%	82%	50%	28%	6%	0%	0%	0%	0%	0%	0%	0%

Table 8: Daily Fishing Conditions.

Date	Day Type	Pacific Gateway Marina	Port Renfrew Marina
28 Jun 2019	Midweek	choppy	calm/rippled
29 Jun 2019	Weekend		
30 Jun 2019	Weekend	choppy	
01 Jul 2019	Weekend		
02 Jul 2019	Midweek		
03 Jul 2019	Midweek		
04 Jul 2019	Midweek		calm/rippled
05 Jul 2019	Midweek	calm/rippled	
06 Jul 2019	Weekend		calm/rippled
07 Jul 2019	Weekend		
08 Jul 2019	Midweek		calm/rippled
09 Jul 2019	Midweek		
10 Jul 2019	Midweek		
11 Jul 2019	Midweek		
12 Jul 2019	Midweek		calm/rippled
13 Jul 2019	Weekend		calm/rippled
14 Jul 2019	Weekend		
15 Jul 2019	Midweek		calm/rippled
16 Jul 2019	Midweek	calm/rippled	
17 Jul 2019	Midweek		
18 Jul 2019	Midweek		choppy
19 Jul 2019	Midweek	frequent whitecaps	
20 Jul 2019	Weekend		calm/rippled
21 Jul 2019	Weekend		
22 Jul 2019	Midweek		choppy
23 Jul 2019	Midweek		
24 Jul 2019	Midweek		
25 Jul 2019	Midweek	calm/rippled	
26 Jul 2019	Midweek		calm/rippled
27 Jul 2019	Weekend	choppy	
28 Jul 2019	Weekend		calm/rippled
29 Jul 2019	Midweek	choppy	
30 Jul 2019	Midweek		
31 Jul 2019	Midweek		
01 Aug 2019	Midweek		
02 Aug 2019	Midweek	calm/rippled	
03 Aug 2019	Weekend		calm/rippled