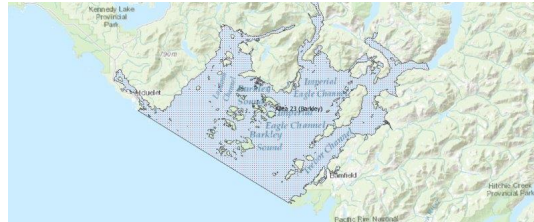


FISHERIES AND OCEANS CANADA

SOUTH COAST ASSESSMENT BULLETIN

CREEL SURVEY DATA REVIEW PACKAGE

Area 23 (Barkley) July 2019



Prepared By:

South Coast Salmon Stock Assessment Section

Thursday 27th August, 2020



Fisheries and Oceans
Canada

Pêches et Océans
Canada

**your
catch
counts**

Table 1: Numbers of Interviews conducted contributing to the area by day and access site.

		China Creek		Clutesi Ramp		Eagle Marine (Fuel Dock)			Island West			McKay Bay Gas Dock		Poett Nook		Seabeam Resort			Tofino Resort and Marina MD	Ucluelet Gov Dock						
Date	Day Type	AM	PM	AM	MD	PM	AM	MD	PM	AM	MD	PM	MD	PM	AM	MD	AM	MD		PM	AM	MD	PM			
28 Jun 2019	Midweek				1																					
29 Jun 2019	Weekend	1						6																		
30 Jun 2019	Weekend			2																		6				
01 Jul 2019	Weekend																			1						
02 Jul 2019	Midweek						2					3														
03 Jul 2019	Midweek																					8				
04 Jul 2019	Midweek			1				6														4				
05 Jul 2019	Midweek										4															
06 Jul 2019	Weekend	1																								
07 Jul 2019	Weekend			2							1										5					
08 Jul 2019	Midweek						3																			
09 Jul 2019	Midweek											3														
10 Jul 2019	Midweek																					1				
11 Jul 2019	Midweek	1						4									5									
12 Jul 2019	Midweek										4										2					
13 Jul 2019	Weekend			3																				4		
14 Jul 2019	Weekend			6							7															
15 Jul 2019	Midweek			3																				4		
16 Jul 2019	Midweek	3			3																					
17 Jul 2019	Midweek							3			7															
18 Jul 2019	Midweek											4														
19 Jul 2019	Midweek					8					2												5			
20 Jul 2019	Weekend			3																						
21 Jul 2019	Weekend	2																				2				
22 Jul 2019	Midweek						3				10				8											
23 Jul 2019	Midweek			3									5													
24 Jul 2019	Midweek		3														2									
25 Jul 2019	Midweek																					2				
26 Jul 2019	Midweek									6												3				
27 Jul 2019	Weekend	1																				7				
28 Jul 2019	Weekend					10				7																
29 Jul 2019	Midweek						1																			
30 Jul 2019	Midweek																									
31 Jul 2019	Midweek			1						3												2				
01 Aug 2019	Midweek	1																				8				
02 Aug 2019	Midweek									1																
03 Aug 2019	Weekend			3																				11		

Table 2: Daily tally of interviews, catch and effort.

Date	Day	Average Fishing Conditions	Interviews & Log Trips	Chinook	Coho	Sockeye	Halibut	Observed Fishing	Flight Time	Expanded Fishing
28-Jun-2019	Friday	calm/rippled	13	53	8					
29-Jun-2019	Saturday	calm/rippled	9	17	1	1		131	0857	235
30-Jun-2019	Sunday	calm/rippled	10	13	1					
01-Jul-2019	Monday (Canada Day)	calm/rippled	3	9	2					
02-Jul-2019	Tuesday	calm/rippled	9	17	6		1			
03-Jul-2019	Wednesday	calm/rippled	11	37	2		3	76	0731	136
04-Jul-2019	Thursday	calm/rippled	11	29	9					
05-Jul-2019	Friday	calm/rippled	11	40	11		1			
06-Jul-2019	Saturday	choppy	5	27	3			67	0805	136
07-Jul-2019	Sunday	calm/rippled	10	21	8		2			
08-Jul-2019	Monday	calm/rippled	5	13	5					
09-Jul-2019	Tuesday	calm/rippled	7	10	12			83	0741	156
10-Jul-2019	Wednesday	choppy	1		3					
11-Jul-2019	Thursday	calm/rippled	16	26	56		1			
12-Jul-2019	Friday	choppy	13	24	27					
13-Jul-2019	Saturday	calm/rippled	21	30	55			148	0739	309
14-Jul-2019	Sunday	calm/rippled	15	17	19					
15-Jul-2019	Monday	calm/rippled	11	18	17					
16-Jul-2019	Tuesday	calm/rippled	15	34	32					
17-Jul-2019	Wednesday	choppy	8	21	25					
18-Jul-2019	Thursday	frequent whitecaps	15	25	14			104	0738	216
19-Jul-2019	Friday	calm/rippled	14	22	9					
20-Jul-2019	Saturday	calm/rippled	16	31	16			170	0748	370
21-Jul-2019	Sunday	calm/rippled	6	15	19					
22-Jul-2019	Monday	calm/rippled	22	27	14			93	0747	189
23-Jul-2019	Tuesday	choppy	13	21	13					
24-Jul-2019	Wednesday	choppy	11	29	23	1				
25-Jul-2019	Thursday	calm/rippled	13	27	12		3			
26-Jul-2019	Friday	calm/rippled	9	18	13					
27-Jul-2019	Saturday	choppy	12	21	15			164	0749	353
28-Jul-2019	Sunday	choppy	25	30	46					
29-Jul-2019	Monday	calm/rippled	3	8	4					
30-Jul-2019	Tuesday	choppy	4	2	6			94	0745	194
31-Jul-2019	Wednesday	calm/rippled	8	6	10		4			
01-Aug-2019	Thursday	calm/rippled	27	12	25					
02-Aug-2019	Friday	frequent whitecaps	9	20	27					
03-Aug-2019	Saturday	calm/rippled	26	19	40		3			
	Totals	calm/rippled	230	454	323	1	13	90*		178*
	Totals	calm/rippled	113	201	183		2	137*		292*

* Average number of boats Observed and Expanded

Table 3: Simple area based cpue (catch per boat trip) expansion.

Day Type	Average Expanded Boats	Number of Days	Total Estimated Effort	CPUE				Retained			
				Chinook	Coho	Sockeye	Halibut	Chinook	Coho	Sockeye	Halibut
Weekend	292	9	2628	1.7790	1.6190		0.0180	4675	4255		47
Midweek	178	22	3916	1.9740	1.4040	0.0040	0.0570	7730	5498	16	223

Table 4: Recent years estimates of retained catch and effort.

Year	Month	Total Effort	Chinook Kept	Coho Kept	Sockeye Kept	Halibut Kept
2014	July	4898	5674	3874	665	443
2015	July	3270	2965	971	3358	68
2016	July	2684	1109	55	781	115
2017	July	3237	1250	434	898	47
2018	July	4550	3740	1310	50	11
2019	July	6337	8212	6009	6	110
5-Yr Avg	July	3728	2948	1329	1150	137

Table 5: Sport Head Recovery Review.

Species	Creel Marked Catch	Creel Mark Rate	Creel Submission Rate	iRec Marked Catch	iRec Mark Rate	iRec Submission Rate	Sport Head Recoveries
Coho	1629	32%	4%	1890	38%	3%	65
Chinook	2225	29%	11%	2042	35%	12%	237

Table 6: Guided Proprtions Review.

Data Source	Interviews / Angler Days	Guided Proportion
Creel Interivews	765	17%
iRec Anglers	8481	22%
iRec Responses	237	29%

Figure 1: Proportion of each day's fishing by hour.

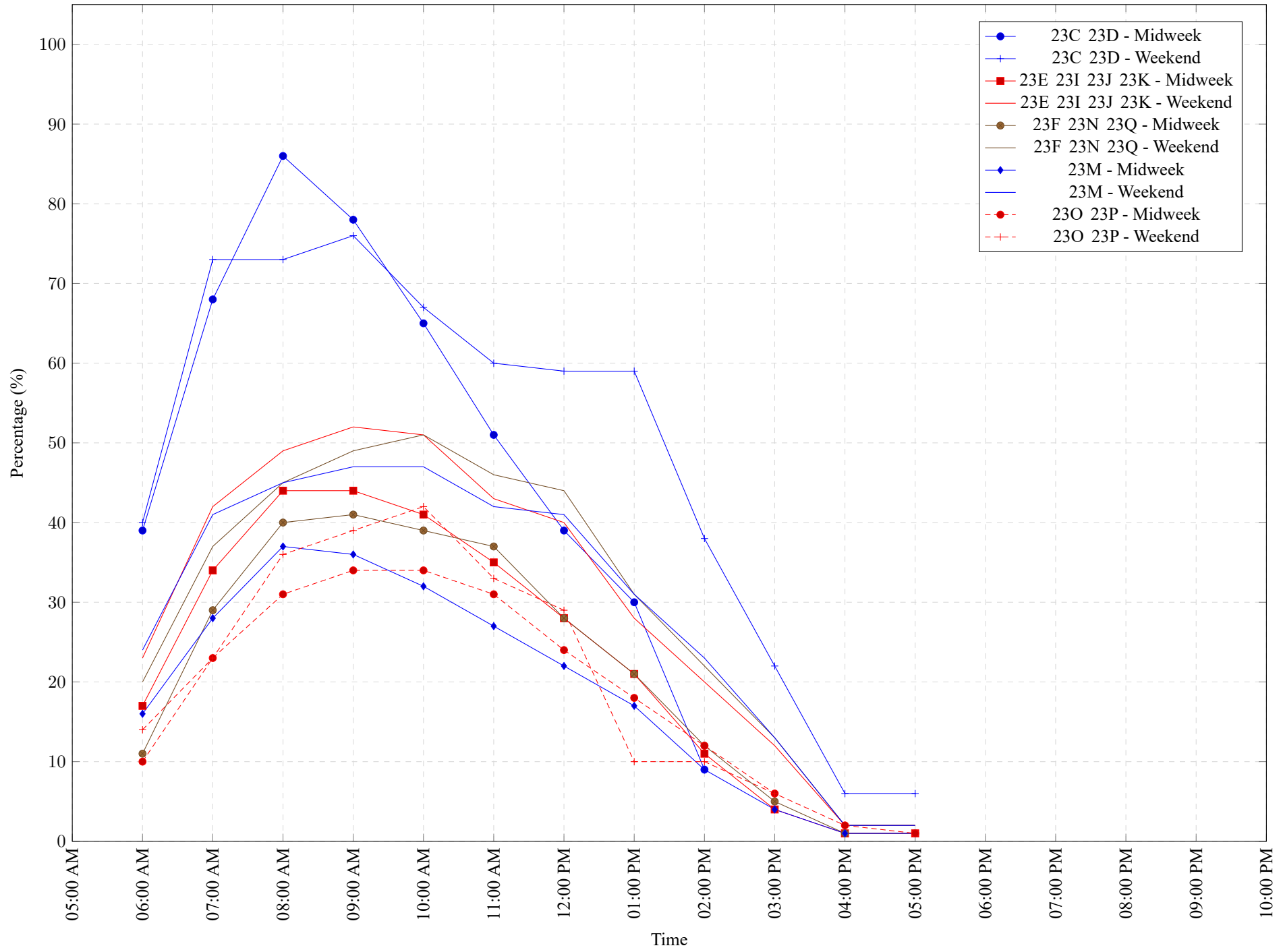


Table 7: Proportion of each day's fishing by hour.

Areas	Day Type	6:00 AM	7:00 AM	8:00 AM	9:00 AM	10:00 AM	11:00 AM	12:00 PM	01:00 PM	02:00 PM	03:00 PM	04:00 PM	05:00 PM	06:00 PM	07:00 PM	08:00 PM	09:00 PM	10:00 PM
23C 23D	Midweek	39%	68%	86%	78%	65%	51%	39%	30%	9%	0%	0%	0%	0%	0%	0%	0%	0%
23C 23D	Weekend	40%	73%	73%	76%	67%	60%	59%	59%	38%	22%	6%	6%	0%	0%	0%	0%	0%
23E 23I 23J 23K	Midweek	17%	34%	44%	44%	41%	35%	28%	21%	11%	4%	1%	1%	0%	0%	0%	0%	0%
23E 23I 23J 23K	Weekend	23%	42%	49%	52%	51%	43%	40%	28%	20%	12%	2%	2%	0%	0%	0%	0%	0%
23F 23N 23Q	Midweek	11%	29%	40%	41%	39%	37%	28%	21%	12%	5%	1%	1%	0%	0%	0%	0%	0%
23F 23N 23Q	Weekend	20%	37%	45%	49%	51%	46%	44%	31%	22%	13%	2%	2%	0%	0%	0%	0%	0%
23M	Midweek	16%	28%	37%	36%	32%	27%	22%	17%	9%	4%	1%	1%	0%	0%	0%	0%	0%
23M	Weekend	24%	41%	45%	47%	47%	42%	41%	31%	23%	13%	2%	2%	0%	0%	0%	0%	0%
23O 23P	Midweek	10%	23%	31%	34%	34%	31%	24%	18%	12%	6%	2%	1%	0%	0%	0%	0%	0%
23O 23P	Weekend	14%	23%	36%	39%	42%	33%	29%	10%	10%	6%	0%	0%	0%	0%	0%	0%	0%

Table 8: Daily Fishing Conditions.

Date	Day Type	China Creek	Clutesi Ramp	Eagle Marine (Fuel Dock)	Island West	McKay Bay Gas Dock	Poett Nook	Seabeam Resort	Tofino Resort and Marina	Ucluelet Gov Dock
28 Jun 2019	Midweek		choppy							calm/rippled
29 Jun 2019	Weekend	calm/rippled		calm/rippled						
30 Jun 2019	Weekend		calm/rippled							calm/rippled
01 Jul 2019	Weekend								calm/rippled	
02 Jul 2019	Midweek			calm/rippled	calm/rippled					
03 Jul 2019	Midweek									calm/rippled
04 Jul 2019	Midweek		choppy	calm/rippled						
05 Jul 2019	Midweek				calm/rippled					calm/rippled
06 Jul 2019	Weekend	choppy								
07 Jul 2019	Weekend		choppy		calm/rippled					calm/rippled
08 Jul 2019	Midweek			calm/rippled						
09 Jul 2019	Midweek				calm/rippled					
10 Jul 2019	Midweek									choppy
11 Jul 2019	Midweek	calm/rippled		choppy				calm/rippled		
12 Jul 2019	Midweek				choppy					calm/rippled
13 Jul 2019	Weekend		calm/rippled				calm/rippled			calm/rippled
14 Jul 2019	Weekend		calm/rippled		calm/rippled					
15 Jul 2019	Midweek		calm/rippled							calm/rippled
16 Jul 2019	Midweek	calm/rippled		calm/rippled	calm/rippled					
17 Jul 2019	Midweek				choppy					
18 Jul 2019	Midweek							frequent whitecaps		frequent whitecaps
19 Jul 2019	Midweek		choppy	calm/rippled						
20 Jul 2019	Weekend		calm/rippled		calm/rippled					
21 Jul 2019	Weekend	calm/rippled								calm/rippled
22 Jul 2019	Midweek		frequent whitecaps		calm/rippled		calm/rippled			
23 Jul 2019	Midweek		calm/rippled	choppy		choppy				
24 Jul 2019	Midweek	choppy						choppy		choppy
25 Jul 2019	Midweek									calm/rippled
26 Jul 2019	Midweek				calm/rippled					
27 Jul 2019	Weekend	calm/rippled								choppy
28 Jul 2019	Weekend		frequent whitecaps	calm/rippled		choppy				
29 Jul 2019	Midweek			calm/rippled						
30 Jul 2019	Midweek									choppy
31 Jul 2019	Midweek		calm/rippled	calm/rippled						
01 Aug 2019	Midweek	calm/rippled			calm/rippled		calm/rippled			calm/rippled
02 Aug 2019	Midweek			choppy				frequent whitecaps		
03 Aug 2019	Weekend		calm/rippled		calm/rippled			calm/rippled		calm/rippled