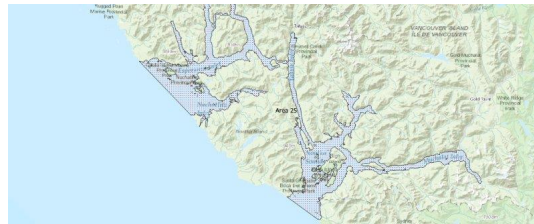


FISHERIES AND OCEANS CANADA

SOUTH COAST ASSESSMENT BULLETIN

CREEL SURVEY DATA REVIEW PACKAGE

Area 25 July 2019



Prepared By:
South Coast Salmon Stock Assessment Section

Friday 5th February, 2021



Fisheries and Oceans
Canada

Pêches et Océans
Canada



Table 1: Numbers of Interviews conducted contributing to the area by day and access site.

Date	Day Type	Cougar Creek			Moutcha Bay Resort			Westview Marina		
		AM	MD	PM	AM	MD	PM	AM	MD	PM
28 Jun 2019	Midweek	3							3	
29 Jun 2019	Weekend				5					
30 Jun 2019	Weekend								8	
01 Jul 2019	Weekend									
02 Jul 2019	Midweek								9	
03 Jul 2019	Midweek		8						6	
04 Jul 2019	Midweek	7							9	
05 Jul 2019	Midweek				1				10	
06 Jul 2019	Weekend				5					
07 Jul 2019	Weekend	7							6	
08 Jul 2019	Midweek			6						
09 Jul 2019	Midweek					5				
10 Jul 2019	Midweek									
11 Jul 2019	Midweek									13
12 Jul 2019	Midweek								12	
13 Jul 2019	Weekend	14								
14 Jul 2019	Weekend	14								
15 Jul 2019	Midweek	2							10	
16 Jul 2019	Midweek	16							7	
17 Jul 2019	Midweek			11					8	
18 Jul 2019	Midweek						13		11	
19 Jul 2019	Midweek	21								
20 Jul 2019	Weekend	29								
21 Jul 2019	Weekend		23					8		
22 Jul 2019	Midweek								13	
23 Jul 2019	Midweek								12	
24 Jul 2019	Midweek								10	
25 Jul 2019	Midweek					17				
26 Jul 2019	Midweek	21							16	
27 Jul 2019	Weekend				8					
28 Jul 2019	Weekend	19							16	
29 Jul 2019	Midweek					19			10	
30 Jul 2019	Midweek						26			10
31 Jul 2019	Midweek			13						11
01 Aug 2019	Midweek	19								
02 Aug 2019	Midweek	25							18	
03 Aug 2019	Weekend		23						20	

Table 2: Daily tally of interviews, catch and effort.

Date	Day	Average Fishing Conditions	Interviews & Log Trips	Chinook	Coho	Sockeye	Halibut	Observed Fishing	Flight Time	Expanded Fishing
28-Jun-2019	Friday	choppy	7	7						
29-Jun-2019	Saturday	calm/rippled	6	5	1					
30-Jun-2019	Sunday	calm/rippled	9	11	13		2	86	0725	124
01-Jul-2019	Monday (Canada Day)		2	5	4					
02-Jul-2019	Tuesday	calm/rippled	10	38	8		1			
03-Jul-2019	Wednesday	choppy	16	46	14		38	52	0800	82
04-Jul-2019	Thursday	calm/rippled	16	30	6		2			
05-Jul-2019	Friday	calm/rippled	14	39	18		10			
06-Jul-2019	Saturday	calm/rippled	5	2	3					
07-Jul-2019	Sunday	calm/rippled	15	30	8			91	0710	134
08-Jul-2019	Monday	frequent whitecaps	7	5	2		2	97	0745	153
09-Jul-2019	Tuesday	choppy	12	19	5					
10-Jul-2019	Wednesday		10	6	3					
11-Jul-2019	Thursday	calm/rippled	19	34	29					
12-Jul-2019	Friday	calm/rippled	16	24	31					
13-Jul-2019	Saturday	choppy	20	27	11	1				
14-Jul-2019	Sunday	choppy	22	24	4		6	149	0718	217
15-Jul-2019	Monday	calm/rippled	24	40	28					
16-Jul-2019	Tuesday	choppy	33	63	30					
17-Jul-2019	Wednesday	choppy	29	38	32					
18-Jul-2019	Thursday	choppy	44	73	37		1	171	0739	282
19-Jul-2019	Friday	choppy	21	15						
20-Jul-2019	Saturday	choppy	31	16			16	167	0721	249
21-Jul-2019	Sunday	choppy	31	31	14					
22-Jul-2019	Monday	calm/rippled	13	15	29					
23-Jul-2019	Tuesday	calm/rippled	18	40	9			165	0750	275
24-Jul-2019	Wednesday	choppy	14	20	19		1			
25-Jul-2019	Thursday	calm/rippled	24	36	9					
26-Jul-2019	Friday	choppy	39	65	29					
27-Jul-2019	Saturday	calm/rippled	10	17	8					
28-Jul-2019	Sunday	calm/rippled	37	68	32		3	262	0746	374
29-Jul-2019	Monday	choppy	29	67	15	1				
30-Jul-2019	Tuesday	calm/rippled	36	61	38					
31-Jul-2019	Wednesday	calm/rippled	26	36	25		13			
01-Aug-2019	Thursday	calm/rippled	19	28	1					
02-Aug-2019	Friday	choppy	43	41	35			146	0655	354
03-Aug-2019	Saturday	choppy	45	40	43		13	0	1027	0
	Totals	choppy	470	810	416	1	68	121*		198*
	Totals	choppy	173	220	84	1	25	167*		244*

* Average number of boats Observed and Expanded

Table 3: Simple area based cpue (catch per boat trip) expansion.

Day Type	Average Expanded Boats	Number of Days	Total Estimated Effort	CPUE				Retained			
				Chinook	Coho	Sockeye	Halibut	Chinook	Coho	Sockeye	Halibut
Midweek	198	22	4356	1.7230	0.8850	0.0020	0.1450	7505	3855	9	632
Weekend	244	9	2196	1.2720	0.4860	0.0060	0.1450	2793	1067	13	318

Table 4: Recent years estimates of retained catch and effort.

Year	Month	Total Effort	Chinook Kept	Coho Kept	Sockeye Kept	Halibut Kept
2014	July	5601	8387	909		54
2015	July	4336	7510	3444		205
2016	July	7505	4461	675		588
2017	July	5032	7161	343		114
2018	July	4659	3963	2771	3	111
2019	July	5910	9797	3257	21	102
5-Yr Avg	July	5427	6296	1628	3	214

Table 5: Sport Head Recovery Review.

Species	Creel Marked Catch	Creel Mark Rate	Creel Submission Rate	iRec Marked Catch	iRec Mark Rate	iRec Submission Rate	Sport Head Recoveries
Coho	489	18%	25%	1529	37%	8%	121
Chinook	708	7%	28%	2183	19%	9%	196

Table 6: Guided Proprtions Review.

Data Source	Interviews / Angler Days	Guided Proportion
Creel Interivews	840	10%
iRec Anglers	18116	17%
iRec Responses	642	52%

Figure 1: Proportion of each day's fishing by hour.

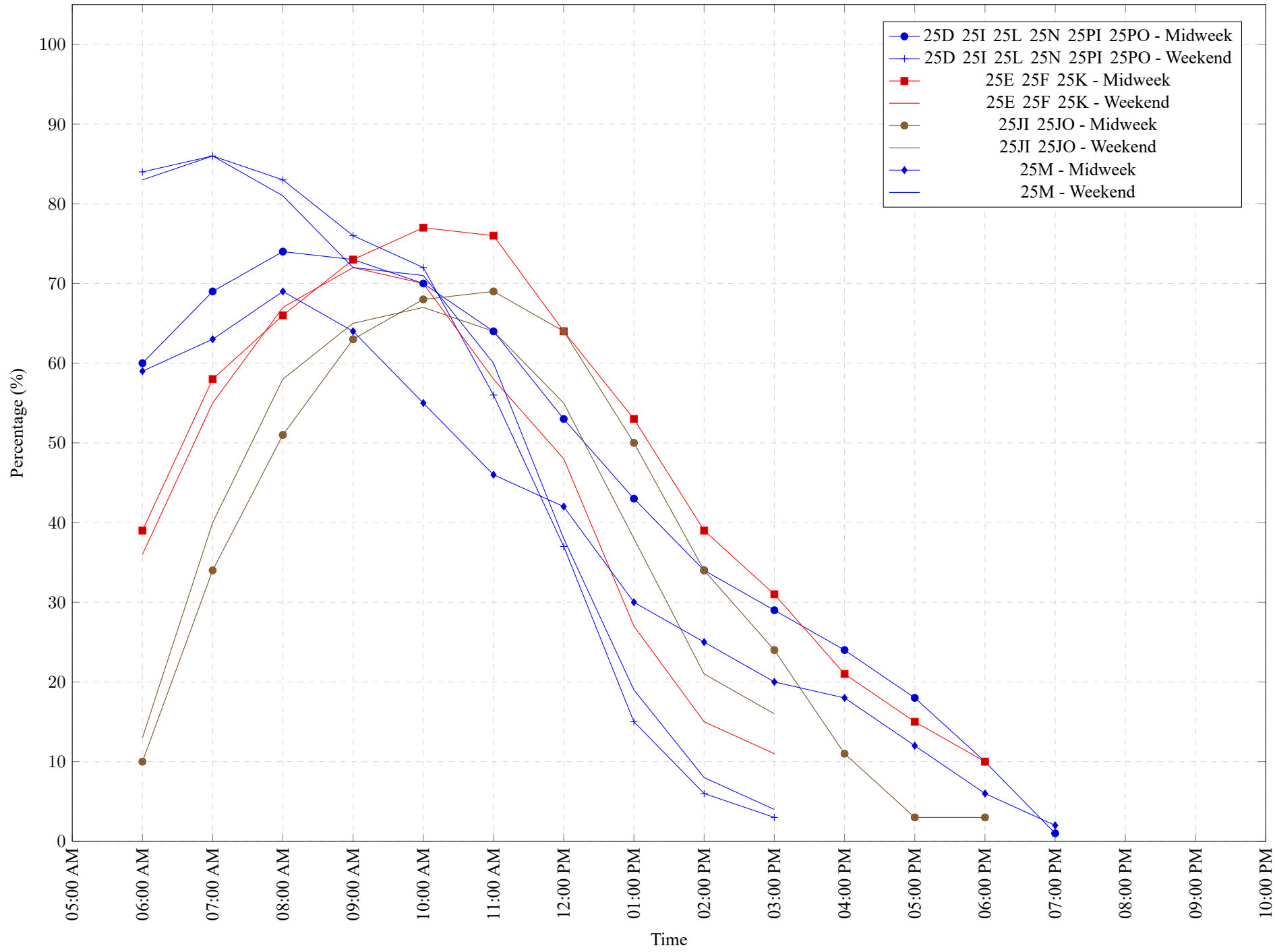


Table 7: Proportion of each day's fishing by hour.

Areas						Day Type	6:00 AM	7:00 AM	8:00 AM	9:00 AM	10:00 AM	11:00 AM	12:00 PM	01:00 PM	02:00 PM	03:00 PM	04:00 PM	05:00 PM	06:00 PM	07:00 PM	08:00 PM	09:00 PM	10:00 PM
25D 25I 25L 25N 25PI 25PO	25D 25I 25L 25N 25PI 25PO	25E 25F 25K	25E 25F 25K	25JI 25JO	25JI 25JO	Midweek	60%	69%	74%	73%	70%	64%	53%	43%	34%	29%	24%	18%	10%	1%	0%	0%	0%
Weekend						84%	86%	83%	76%	72%	56%	37%	15%	6%	3%	0%	0%	0%	0%	0%	0%	0%	0%
25E 25F 25K	25E 25F 25K	25JI 25JO	25JI 25JO	25M	25M	Midweek	39%	58%	66%	73%	77%	76%	64%	53%	39%	31%	21%	15%	10%	0%	0%	0%	0%
Weekend						36%	55%	67%	72%	70%	58%	48%	27%	15%	11%	0%	0%	0%	0%	0%	0%	0%	0%
25JI 25JO	25JI 25JO	25M	25M	25M	25M	Midweek	10%	34%	51%	63%	68%	69%	64%	50%	34%	24%	11%	3%	3%	0%	0%	0%	0%
Weekend						13%	40%	58%	65%	67%	64%	55%	38%	21%	16%	0%	0%	0%	0%	0%	0%	0%	0%
25M	25M	25M	25M	25M	25M	Midweek	59%	63%	69%	64%	55%	46%	42%	30%	25%	20%	18%	12%	6%	2%	0%	0%	0%
Weekend						83%	86%	81%	72%	71%	60%	38%	19%	8%	4%	0%	0%	0%	0%	0%	0%	0%	0%

Table 8: Daily Fishing Conditions.

Date	Day Type	Cougar Creek	Moutcha Bay Resort	Westview Marina
28 Jun 2019	Midweek	choppy		calm/rippled
29 Jun 2019	Weekend		calm/rippled	
30 Jun 2019	Weekend			calm/rippled
01 Jul 2019	Weekend			
02 Jul 2019	Midweek			calm/rippled
03 Jul 2019	Midweek	frequent whitecaps		calm/rippled
04 Jul 2019	Midweek	choppy		calm/rippled
05 Jul 2019	Midweek		choppy	calm/rippled
06 Jul 2019	Weekend		calm/rippled	
07 Jul 2019	Weekend	choppy		calm/rippled
08 Jul 2019	Midweek	frequent whitecaps		
09 Jul 2019	Midweek		choppy	
10 Jul 2019	Midweek			
11 Jul 2019	Midweek			calm/rippled
12 Jul 2019	Midweek			calm/rippled
13 Jul 2019	Weekend	choppy		
14 Jul 2019	Weekend	choppy		
15 Jul 2019	Midweek	choppy		calm/rippled
16 Jul 2019	Midweek	choppy		calm/rippled
17 Jul 2019	Midweek	choppy		frequent whitecaps
18 Jul 2019	Midweek		choppy	calm/rippled
19 Jul 2019	Midweek	choppy		
20 Jul 2019	Weekend	choppy		
21 Jul 2019	Weekend	frequent whitecaps		calm/rippled
22 Jul 2019	Midweek			calm/rippled
23 Jul 2019	Midweek			calm/rippled
24 Jul 2019	Midweek			choppy
25 Jul 2019	Midweek		calm/rippled	
26 Jul 2019	Midweek	choppy		choppy
27 Jul 2019	Weekend		calm/rippled	
28 Jul 2019	Weekend	choppy		calm/rippled
29 Jul 2019	Midweek		choppy	calm/rippled
30 Jul 2019	Midweek		calm/rippled	calm/rippled
31 Jul 2019	Midweek	choppy		calm/rippled
01 Aug 2019	Midweek	calm/rippled		
02 Aug 2019	Midweek	choppy		calm/rippled
03 Aug 2019	Weekend	frequent whitecaps		calm/rippled