



**Table 1: Numbers of Interviews conducted contributing to the area by day and access site.**

Date	Day Type	Cowichan Bay		Crofton Ramp	Sidney	
		AM	PM	AM	AM	PM
29 Jul 2019	Midweek					
30 Jul 2019	Midweek					
31 Jul 2019	Midweek					
01 Aug 2019	Midweek	1			1	
02 Aug 2019	Midweek					
03 Aug 2019	Weekend		9			
04 Aug 2019	Weekend					1
05 Aug 2019	Weekend					
06 Aug 2019	Midweek					
07 Aug 2019	Midweek					
08 Aug 2019	Midweek					
09 Aug 2019	Midweek					
10 Aug 2019	Weekend					
11 Aug 2019	Weekend	1			1	
12 Aug 2019	Midweek					
13 Aug 2019	Midweek					
14 Aug 2019	Midweek		3			
15 Aug 2019	Midweek					
16 Aug 2019	Midweek					
17 Aug 2019	Weekend					2
18 Aug 2019	Weekend			1		
19 Aug 2019	Midweek		5			
20 Aug 2019	Midweek					
21 Aug 2019	Midweek					
22 Aug 2019	Midweek					
23 Aug 2019	Midweek					
24 Aug 2019	Weekend		8			
25 Aug 2019	Weekend					
26 Aug 2019	Midweek					4
27 Aug 2019	Midweek	4				
28 Aug 2019	Midweek					
29 Aug 2019	Midweek					
30 Aug 2019	Midweek					
31 Aug 2019	Weekend					
01 Sep 2019	Weekend					
02 Sep 2019	Weekend					
03 Sep 2019	Midweek	1				

Table 2: Daily tally of interviews, catch and effort.

Date	Day	Average Fishing Conditions	Interviews & Log Trips	Chinook	Coho	Sockeye	Halibut	Observed Fishing	Flight Time	Expanded Fishing
29-Jul-2019	Monday		0							
30-Jul-2019	Tuesday		0					1	1010	2
31-Jul-2019	Wednesday		0							
01-Aug-2019	Thursday	choppy	2					11	1013	25
02-Aug-2019	Friday		0							
03-Aug-2019	Saturday	calm/rippled	9					15	1019	30
04-Aug-2019	Sunday	calm/rippled	1							
05-Aug-2019	Monday (B.C. Day)		0					35	0959	76
06-Aug-2019	Tuesday		0							
07-Aug-2019	Wednesday		0					12	1021	26
08-Aug-2019	Thursday		0					7	1020	15
09-Aug-2019	Friday		0							
10-Aug-2019	Saturday		0					18	1021	36
11-Aug-2019	Sunday	calm/rippled	2							
12-Aug-2019	Monday		0							
13-Aug-2019	Tuesday		0							
14-Aug-2019	Wednesday	choppy	3					21	1028	46
15-Aug-2019	Thursday		0							
16-Aug-2019	Friday		0							
17-Aug-2019	Saturday	choppy	2	1						
18-Aug-2019	Sunday	frequent whitecaps	1					10	1022	20
19-Aug-2019	Monday	choppy	5							
20-Aug-2019	Tuesday		1	1	1					
21-Aug-2019	Wednesday		0							
22-Aug-2019	Thursday		0					15	1018	32
23-Aug-2019	Friday		0							
24-Aug-2019	Saturday	choppy	8	2						
25-Aug-2019	Sunday		1	1						
26-Aug-2019	Monday	calm/rippled	4	1						
27-Aug-2019	Tuesday	calm/rippled	4							
28-Aug-2019	Wednesday		0							
29-Aug-2019	Thursday		0							
30-Aug-2019	Friday		0					10	1022	22
31-Aug-2019	Saturday		0							
01-Sep-2019	Sunday		0					34	1118	71
02-Sep-2019	Monday (Labour Day)		0							
03-Sep-2019	Tuesday	choppy	1							
	Totals	choppy	19	2	1			13*		28*
	Totals	choppy	24	4				20*		41*

\* Average number of boats Observed and Expanded

**Table 3: Simple area based cpue (catch per boat trip) expansion.**

Day Type	Average Expanded Boats	Number of Days	Total Estimated Effort	CPUE				Retained			
				Chinook	Coho	Sockeye	Halibut	Chinook	Coho	Sockeye	Halibut
Midweek	28	21	588	0.1050	0.0530			62	31		
Weekend	41	10	410	0.1670				68			

**Table 4: Recent years estimates of retained catch and effort.**

Year	Month	Total Effort	Chinook Kept	Coho Kept	Sockeye Kept	Halibut Kept
2014	August	3066	461		591	27
2015	August	4002	1149	49		
2016	August	1676	39			
2017	August	4773	752	118		
2018	August	1035	149	46		
2019	August	1079	319	1		0
5-Yr Avg	August	2910	510	71	591	27

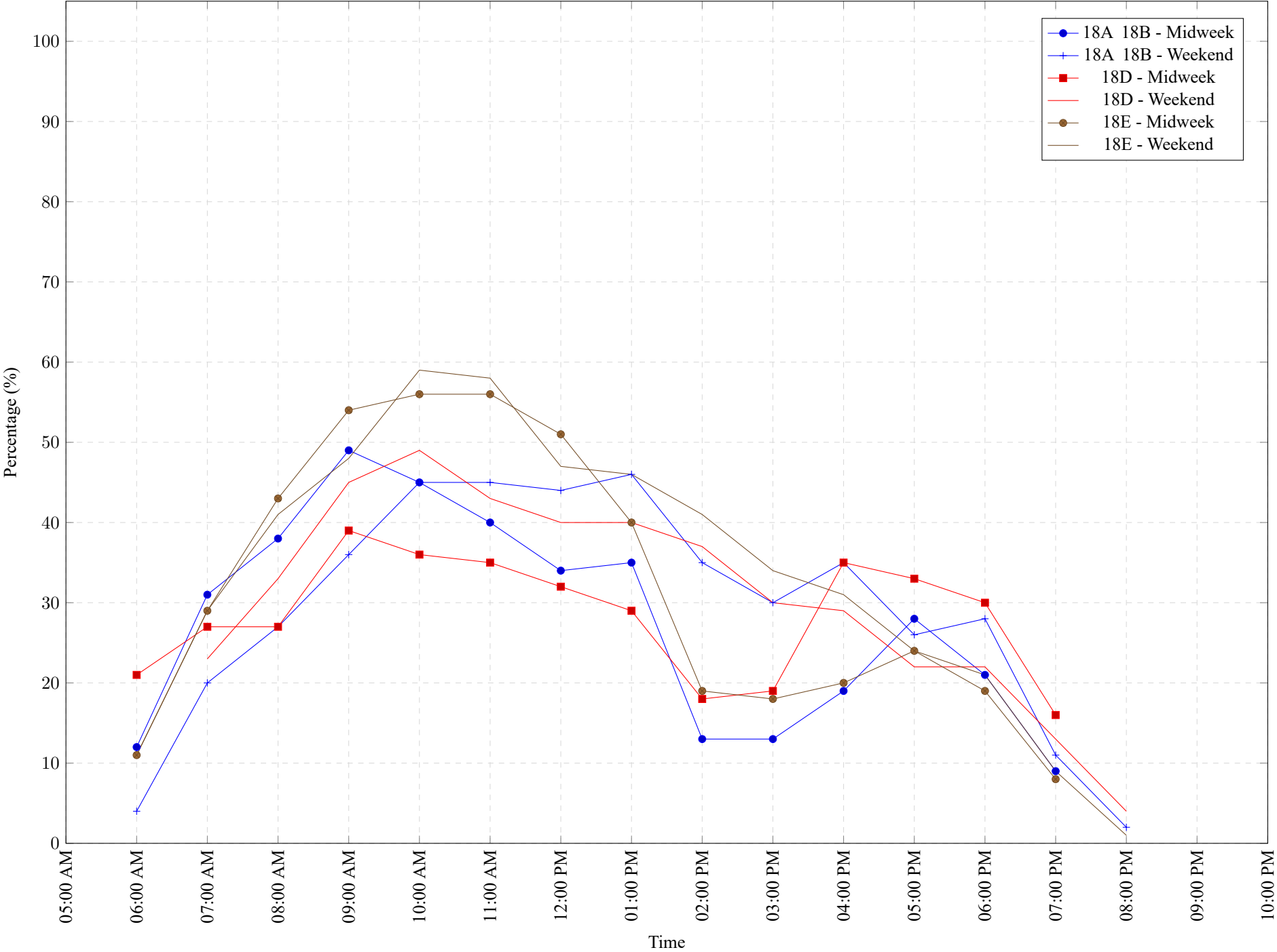
**Table 5: Sport Head Recovery Review.**

Species	Creel Marked Catch	Creel Mark Rate	Creel Submission Rate	iRec Marked Catch	iRec Mark Rate	iRec Submission Rate	Sport Head Recoveries
Coho	1	100%	100%	119	100%	1%	1
Chinook	82	27%	1%	119	55%	1%	1

**Table 6: Guided Proprtions Review.**

Data Source	Interviews / Angler Days	Guided Proportion
Creel Interivews	43	0%
iRec Anglers	4802	4%
iRec Responses	93	0%

Figure 1: Proportion of each day's fishing by hour.



**Table 7: Proportion of each day's fishing by hour.**

Areas		Day Type	6:00 AM	7:00 AM	8:00 AM	9:00 AM	10:00 AM	11:00 AM	12:00 PM	01:00 PM	02:00 PM	03:00 PM	04:00 PM	05:00 PM	06:00 PM	07:00 PM	08:00 PM	09:00 PM	10:00 PM
18A 18B		Midweek	12%	31%	38%	49%	45%	40%	34%	35%	13%	13%	19%	28%	21%	9%	0%	0%	0%
18A 18B		Weekend	4%	20%	27%	36%	45%	45%	44%	46%	35%	30%	35%	26%	28%	11%	2%	0%	0%
18D		Midweek	21%	27%	27%	39%	36%	35%	32%	29%	18%	19%	35%	33%	30%	16%	0%	0%	0%
18D		Weekend	0%	23%	33%	45%	49%	43%	40%	40%	37%	30%	29%	22%	22%	13%	4%	0%	0%
18E		Midweek	11%	29%	43%	54%	56%	56%	51%	40%	19%	18%	20%	24%	19%	8%	0%	0%	0%
18E		Weekend	11%	29%	41%	48%	59%	58%	47%	46%	41%	34%	31%	24%	21%	9%	1%	0%	0%

**Table 8: Daily Fishing Conditions.**

Date	Day Type	Cowichan Bay	Crofton Ramp	Sidney
29 Jul 2019	Midweek			
30 Jul 2019	Midweek			
31 Jul 2019	Midweek			
01 Aug 2019	Midweek	choppy		choppy
02 Aug 2019	Midweek			
03 Aug 2019	Weekend	calm/rippled		
04 Aug 2019	Weekend			calm/rippled
05 Aug 2019	Weekend			
06 Aug 2019	Midweek			
07 Aug 2019	Midweek			
08 Aug 2019	Midweek			
09 Aug 2019	Midweek			
10 Aug 2019	Weekend			
11 Aug 2019	Weekend	calm/rippled		calm/rippled
12 Aug 2019	Midweek			
13 Aug 2019	Midweek			
14 Aug 2019	Midweek	choppy		
15 Aug 2019	Midweek			
16 Aug 2019	Midweek			
17 Aug 2019	Weekend			choppy
18 Aug 2019	Weekend		frequent whitecaps	
19 Aug 2019	Midweek	choppy		
20 Aug 2019	Midweek			
21 Aug 2019	Midweek			
22 Aug 2019	Midweek			
23 Aug 2019	Midweek			
24 Aug 2019	Weekend	choppy		
25 Aug 2019	Weekend			
26 Aug 2019	Midweek			calm/rippled
27 Aug 2019	Midweek	calm/rippled		
28 Aug 2019	Midweek			
29 Aug 2019	Midweek			
30 Aug 2019	Midweek			
31 Aug 2019	Weekend			
01 Sep 2019	Weekend			
02 Sep 2019	Weekend			
03 Sep 2019	Midweek	choppy		