

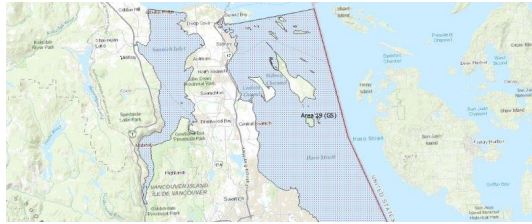
# FISHERIES AND OCEANS CANADA

## SOUTH COAST ASSESSMENT BULLETIN

### CREEL SURVEY DATA REVIEW PACKAGE

---

## Area 19 (GS) August 2019



---

*Prepared By:*  
South Coast Salmon Stock Assessment Section

Thursday 27<sup>th</sup> August, 2020



Fisheries and Oceans  
Canada

Pêches et Océans  
Canada



**Table 1: Numbers of Interviews conducted contributing to the area by day and access site.**

Date	Day Type	Cattle Point	Cowichan Bay		Sidney	
		AM	AM	PM	AM	PM
29 Jul 2019	Midweek					4
30 Jul 2019	Midweek					
31 Jul 2019	Midweek					
01 Aug 2019	Midweek	2			7	
02 Aug 2019	Midweek					7
03 Aug 2019	Weekend					
04 Aug 2019	Weekend					11
05 Aug 2019	Weekend					
06 Aug 2019	Midweek					
07 Aug 2019	Midweek					
08 Aug 2019	Midweek					
09 Aug 2019	Midweek					
10 Aug 2019	Weekend					
11 Aug 2019	Weekend		2		7	
12 Aug 2019	Midweek					
13 Aug 2019	Midweek				3	
14 Aug 2019	Midweek					
15 Aug 2019	Midweek					2
16 Aug 2019	Midweek					
17 Aug 2019	Weekend					8
18 Aug 2019	Weekend					
19 Aug 2019	Midweek			1		
20 Aug 2019	Midweek					
21 Aug 2019	Midweek					
22 Aug 2019	Midweek					
23 Aug 2019	Midweek					
24 Aug 2019	Weekend			1		
25 Aug 2019	Weekend					
26 Aug 2019	Midweek					7
27 Aug 2019	Midweek		1			
28 Aug 2019	Midweek					
29 Aug 2019	Midweek					
30 Aug 2019	Midweek					
31 Aug 2019	Weekend					
01 Sep 2019	Weekend					
02 Sep 2019	Weekend					
03 Sep 2019	Midweek					

*Table 2: Daily tally of interviews, catch and effort.*

Date	Day	Average Fishing Conditions	Interviews & Log Trips	Chinook	Coho	Sockeye	Halibut	Observed Fishing	Flight Time	Expanded Fishing
29-Jul-2019	Monday	choppy	4							
30-Jul-2019	Tuesday		0					2	0925	4
31-Jul-2019	Wednesday		0							
01-Aug-2019	Thursday	calm/rippled	9	8				16	0925	35
02-Aug-2019	Friday	calm/rippled	7	3						
03-Aug-2019	Saturday		0					9	0926	17
04-Aug-2019	Sunday	calm/rippled	11	2						
05-Aug-2019	Monday (B.C. Day)		0					14	0916	27
06-Aug-2019	Tuesday		1							
07-Aug-2019	Wednesday		0					20	0932	44
08-Aug-2019	Thursday		1					16	0928	35
09-Aug-2019	Friday		0							
10-Aug-2019	Saturday		0					14	0927	27
11-Aug-2019	Sunday	calm/rippled	9	1						
12-Aug-2019	Monday		0							
13-Aug-2019	Tuesday	calm/rippled	3							
14-Aug-2019	Wednesday		0					9	0932	20
15-Aug-2019	Thursday	choppy	2							
16-Aug-2019	Friday		0							
17-Aug-2019	Saturday	choppy	8							
18-Aug-2019	Sunday		0					16	0929	30
19-Aug-2019	Monday	choppy	1							
20-Aug-2019	Tuesday		0							
21-Aug-2019	Wednesday		0							
22-Aug-2019	Thursday		0					9	0931	20
23-Aug-2019	Friday		0							
24-Aug-2019	Saturday	choppy	1							
25-Aug-2019	Sunday		0							
26-Aug-2019	Monday	calm/rippled	7	1						
27-Aug-2019	Tuesday	calm/rippled	1							
28-Aug-2019	Wednesday		1							
29-Aug-2019	Thursday		0							
30-Aug-2019	Friday		0					1	0904	2
31-Aug-2019	Saturday		0							
01-Sep-2019	Sunday		0					15	1027	31
02-Sep-2019	Monday (Labour Day)		0							
03-Sep-2019	Tuesday		0							
	Totals	calm/rippled	33	12				12*		26*
	Totals	choppy	29	3				13*		25*

\* Average number of boats Observed and Expanded

**Table 3: Simple area based cpue (catch per boat trip) expansion.**

Day Type	Average Expanded Boats	Number of Days	Total Estimated Effort	CPUE				Retained			
				Chinook	Coho	Sockeye	Halibut	Chinook	Coho	Sockeye	Halibut
Midweek	26	21	546	0.3640				199			
Weekend	25	10	250	0.1030				26			

**Table 4: Recent years estimates of retained catch and effort.**

Year	Month	Total Effort	Chinook Kept	Coho Kept	Sockeye Kept	Halibut Kept
2014	August	357	92			13
2015	August	305	2			
2016	August	396				
2017	August	430	69			
2018	August	645	134			
2019	August	784	264			0
5-Yr Avg	August	427	74			13

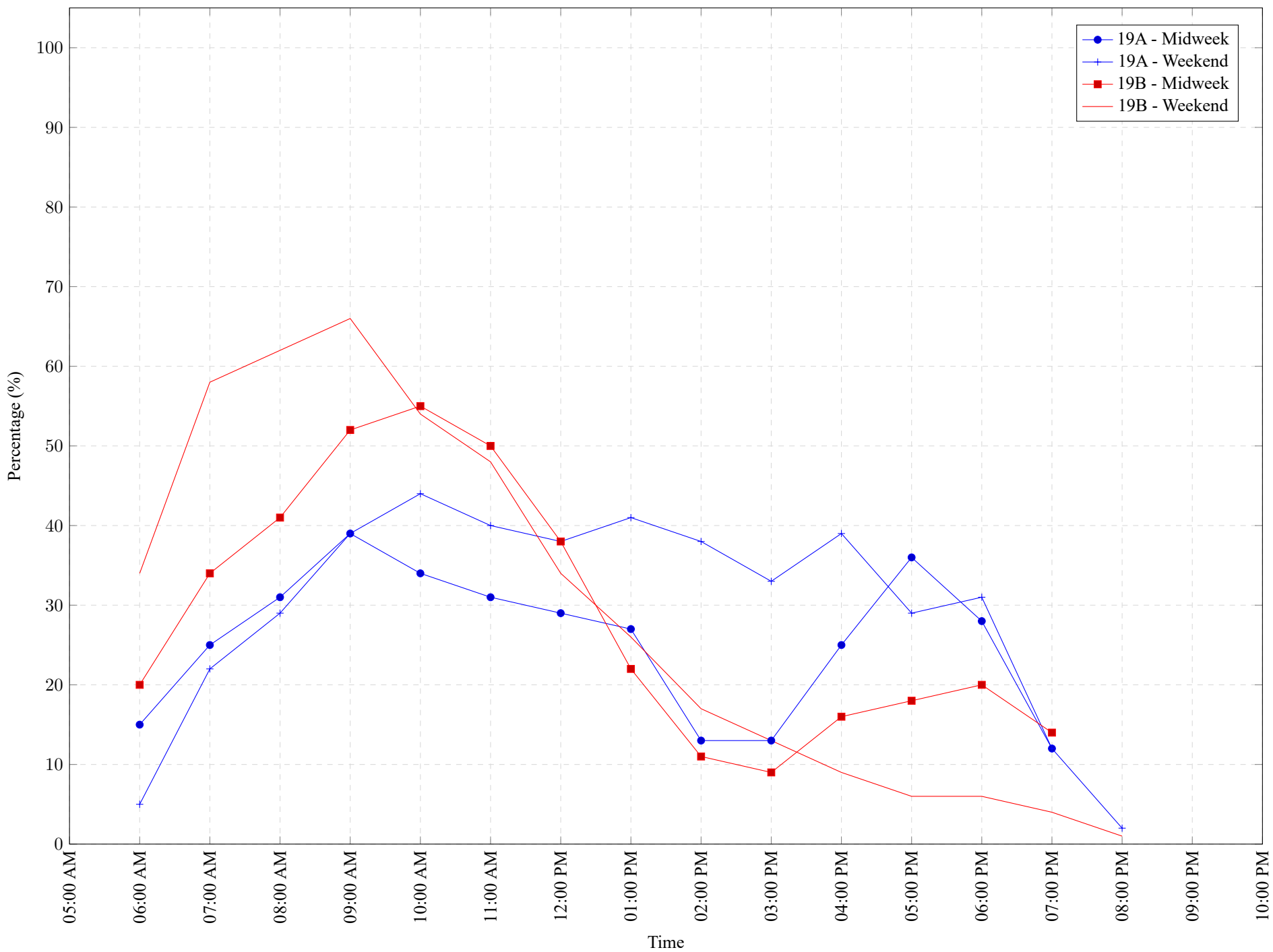
**Table 5: Sport Head Recovery Review.**

Species	Creel Marked Catch	Creel Mark Rate	Creel Submission Rate	iRec Marked Catch	iRec Mark Rate	iRec Submission Rate	Sport Head Recoveries
---------	--------------------	-----------------	-----------------------	-------------------	----------------	----------------------	-----------------------

**Table 6: Guided Proprtions Review.**

Data Source	Interviews / Angler Days	Guided Proportion
Creel Interivews	62	0%
iRec Anglers	540	0%
iRec Responses	8	0%

Figure 1: Proportion of each day's fishing by hour.



**Table 7: Proportion of each day's fishing by hour.**

Areas	Day Type	6:00 AM	7:00 AM	8:00 AM	9:00 AM	10:00 AM	11:00 AM	12:00 PM	01:00 PM	02:00 PM	03:00 PM	04:00 PM	05:00 PM	06:00 PM	07:00 PM	08:00 PM	09:00 PM	10:00 PM
19A	Midweek	15%	25%	31%	39%	34%	31%	29%	27%	13%	13%	25%	36%	28%	12%	0%	0%	0%
19A	Weekend	5%	22%	29%	39%	44%	40%	38%	41%	38%	33%	39%	29%	31%	12%	2%	0%	0%
19B	Midweek	20%	34%	41%	52%	55%	50%	38%	22%	11%	9%	16%	18%	20%	14%	0%	0%	0%
19B	Weekend	34%	58%	62%	66%	54%	48%	34%	26%	17%	13%	9%	6%	6%	4%	1%	0%	0%

**Table 8: Daily Fishing Conditions.**

Date	Day Type	Cattle Point	Cowichan Bay	Sidney
29 Jul 2019	Midweek			choppy
30 Jul 2019	Midweek			
31 Jul 2019	Midweek			
01 Aug 2019	Midweek	calm/rippled		choppy
02 Aug 2019	Midweek			calm/rippled
03 Aug 2019	Weekend			
04 Aug 2019	Weekend			calm/rippled
05 Aug 2019	Weekend			
06 Aug 2019	Midweek			
07 Aug 2019	Midweek			
08 Aug 2019	Midweek			
09 Aug 2019	Midweek			
10 Aug 2019	Weekend			
11 Aug 2019	Weekend		calm/rippled	calm/rippled
12 Aug 2019	Midweek			
13 Aug 2019	Midweek			calm/rippled
14 Aug 2019	Midweek			
15 Aug 2019	Midweek			choppy
16 Aug 2019	Midweek			
17 Aug 2019	Weekend			choppy
18 Aug 2019	Weekend			
19 Aug 2019	Midweek		choppy	
20 Aug 2019	Midweek			
21 Aug 2019	Midweek			
22 Aug 2019	Midweek			
23 Aug 2019	Midweek			
24 Aug 2019	Weekend		choppy	
25 Aug 2019	Weekend			
26 Aug 2019	Midweek			calm/rippled
27 Aug 2019	Midweek		calm/rippled	
28 Aug 2019	Midweek			
29 Aug 2019	Midweek			
30 Aug 2019	Midweek			
31 Aug 2019	Weekend			
01 Sep 2019	Weekend			
02 Sep 2019	Weekend			
03 Sep 2019	Midweek			