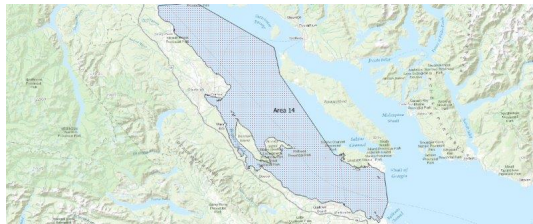


FISHERIES AND OCEANS CANADA

SOUTH COAST ASSESSMENT BULLETIN

CREEL SURVEY DATA REVIEW PACKAGE

Area 14 September 2019



Prepared By:
South Coast Salmon Stock Assessment Section

Thursday 27th August, 2020



Fisheries and Oceans
Canada

Pêches et Océans
Canada



Table 1: Numbers of Interviews conducted contributing to the area by day and access site.

Date	Day Type	Comox Mun		Cooper's Green	Deep Bay	French Ck		Kitty Coleman		Pacific Play		Schooner
		AM	PM	PM	PM	AM	PM	AM	PM	AM	PM	AM
29 Aug 2019	Midweek	5										
30 Aug 2019	Midweek											
31 Aug 2019	Weekend											
01 Sep 2019	Weekend	7			7	56		7			18	
02 Sep 2019	Weekend											
03 Sep 2019	Midweek					24					3	
04 Sep 2019	Midweek											
05 Sep 2019	Midweek	1										
06 Sep 2019	Midweek							2				
07 Sep 2019	Weekend			2				4				
08 Sep 2019	Weekend											1
09 Sep 2019	Midweek											
10 Sep 2019	Midweek											
11 Sep 2019	Midweek											
12 Sep 2019	Midweek											
13 Sep 2019	Midweek											
14 Sep 2019	Weekend											
15 Sep 2019	Weekend					4						
16 Sep 2019	Midweek		5									
17 Sep 2019	Midweek											
18 Sep 2019	Midweek											
19 Sep 2019	Midweek											
20 Sep 2019	Midweek									4		
21 Sep 2019	Weekend											
22 Sep 2019	Weekend											
23 Sep 2019	Midweek						1					
24 Sep 2019	Midweek						13					
25 Sep 2019	Midweek											
26 Sep 2019	Midweek											
27 Sep 2019	Midweek				1							
28 Sep 2019	Weekend											
29 Sep 2019	Weekend					3						
30 Sep 2019	Midweek											
01 Oct 2019	Midweek											
02 Oct 2019	Midweek											
03 Oct 2019	Midweek											

Table 2: Daily tally of interviews, catch and effort.

Date	Day	Average Fishing Conditions	Interviews & Log Trips	Chinook	Coho	Sockeye	Halibut	Observed Fishing	Flight Time	Expanded Fishing
29-Aug-2019	Thursday	calm/rippled	6	5	1			83	1130	157
30-Aug-2019	Friday		1	3						
31-Aug-2019	Saturday		2	4						
01-Sep-2019	Sunday	calm/rippled	74	78	6			103	1314	216
02-Sep-2019	Monday (Labour Day)	calm/rippled	27	26	1					
03-Sep-2019	Tuesday	calm/rippled	27	8	5					
04-Sep-2019	Wednesday		1	4						
05-Sep-2019	Thursday	calm/rippled	2	2				57	1301	128
06-Sep-2019	Friday	calm/rippled	5	10	1					
07-Sep-2019	Saturday	calm/rippled	7	9	2					
08-Sep-2019	Sunday	choppy	2	7				39	1307	82
09-Sep-2019	Monday		3	9						
10-Sep-2019	Tuesday		3	7						
11-Sep-2019	Wednesday		1	5						
12-Sep-2019	Thursday		0					0	1220	0
13-Sep-2019	Friday		0							
14-Sep-2019	Saturday		0							
15-Sep-2019	Sunday	calm/rippled	6	1						
16-Sep-2019	Monday	calm/rippled	6	2						
17-Sep-2019	Tuesday		0							
18-Sep-2019	Wednesday		1	3						
19-Sep-2019	Thursday		1	1						
20-Sep-2019	Friday	calm/rippled	5	4	1					
21-Sep-2019	Saturday		1	6	2			15	1305	32
22-Sep-2019	Sunday		1	1						
23-Sep-2019	Monday	choppy	2	4				0	1307	0
24-Sep-2019	Tuesday	calm/rippled	14	4						
25-Sep-2019	Wednesday		0							
26-Sep-2019	Thursday		1							
27-Sep-2019	Friday	frequent whitecaps	2		1			0	1308	0
28-Sep-2019	Saturday		1		1					
29-Sep-2019	Sunday	frequent whitecaps	3					7	1305	15
30-Sep-2019	Monday		1	4	1					
01-Oct-2019	Tuesday		0							
02-Oct-2019	Wednesday		0							
03-Oct-2019	Thursday		0							
	Totals	calm/rippled	75	67	9			14*		32*
	Totals	choppy	122	128	12			41*		86*

* Average number of boats Observed and Expanded

Table 3: Simple area based cpue (catch per boat trip) expansion.

Day Type	Average Expanded Boats	Number of Days	Total Estimated Effort	CPUE				Retained			
				Chinook	Coho	Sockeye	Halibut	Chinook	Coho	Sockeye	Halibut
Weekend	86	10	860	1.0490	0.0980			902	84		
Midweek	32	20	640	0.8930	0.12			572	77		

Table 4: Recent years estimates of retained catch and effort.

Year	Month	Total Effort	Chinook Kept	Coho Kept	Sockeye Kept	Halibut Kept
2014	September	3444	1638	1012		
2015	September	1323	692	37		
2016	September	3327	931	624		
2017	September	2907	1182	203		
2018	September	1640	289	337	6	
2019	September	2060	1230	113		0
5-Yr Avg	September	2528	946	443	6	

Table 5: Sport Head Recovery Review.

Species	Creel Marked Catch	Creel Mark Rate	Creel Submission Rate	iRec Marked Catch	iRec Mark Rate	iRec Submission Rate	Sport Head Recoveries
Coho	108	96%	6%	256	67%	2%	6
Chinook	71	6%	28%	193	9%	10%	20

Table 6: Guided Proprtions Review.

Data Source	Interviews / Angler Days	Guided Proportion
Creel Interivews	195	2%
iRec Anglers	5031	2%
iRec Responses	83	0%

Figure 1: Proportion of each day's fishing by hour.

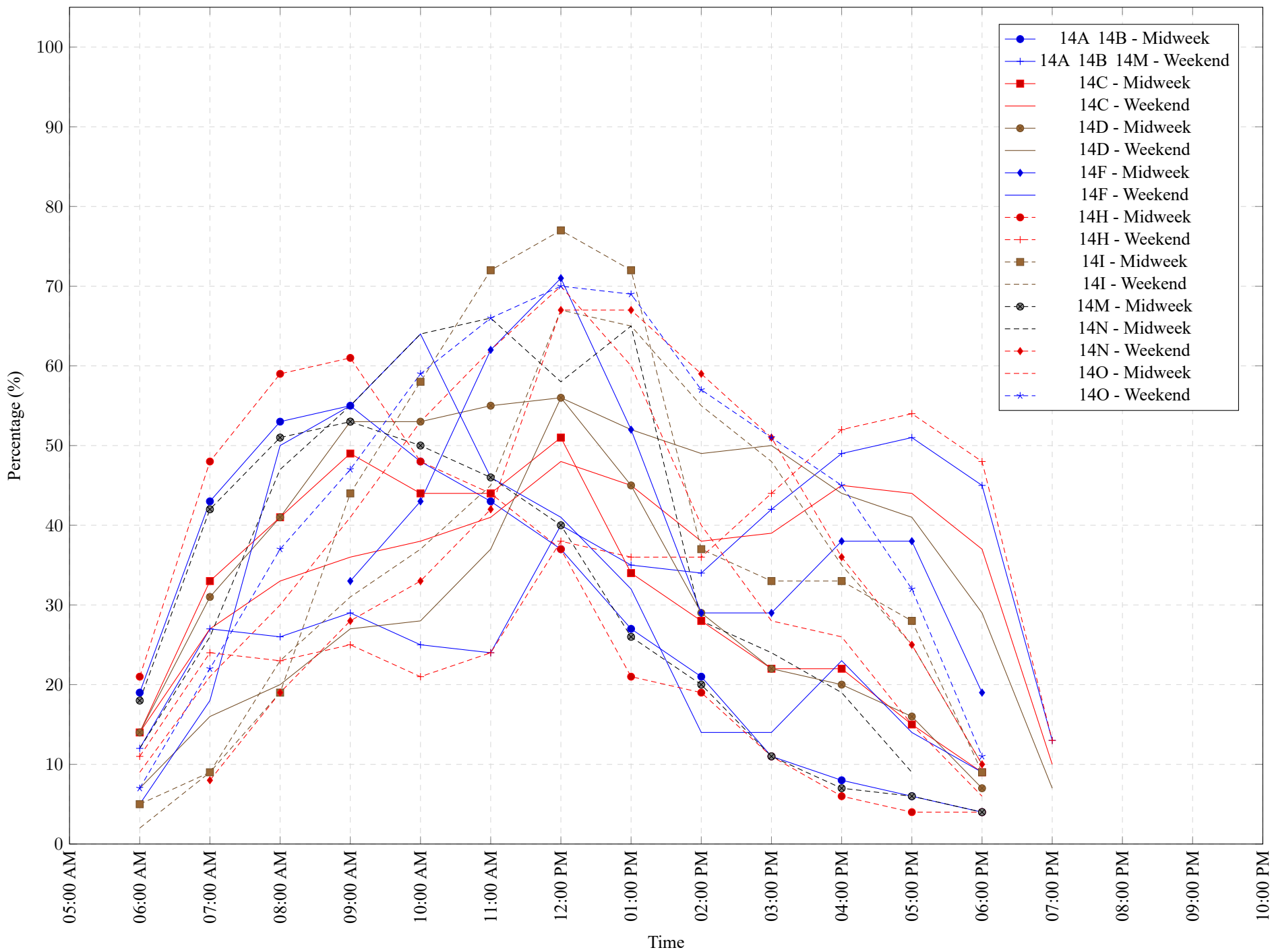


Table 7: Proportion of each day's fishing by hour.

Areas	Day Type	6:00 AM	7:00 AM	8:00 AM	9:00 AM	10:00 AM	11:00 AM	12:00 PM	01:00 PM	02:00 PM	03:00 PM	04:00 PM	05:00 PM	06:00 PM	07:00 PM	08:00 PM	09:00 PM	10:00 PM
14A 14B	Midweek	19%	43%	53%	55%	48%	43%	37%	27%	21%	11%	8%	6%	4%	0%	0%	0%	0%
14A 14B 14M	Weekend	12%	27%	26%	29%	25%	24%	40%	35%	34%	42%	49%	51%	45%	13%	0%	0%	0%
14C	Midweek	14%	33%	41%	49%	44%	44%	51%	34%	28%	22%	22%	15%	9%	0%	0%	0%	0%
14C	Weekend	14%	27%	33%	36%	38%	41%	48%	45%	38%	39%	45%	44%	37%	10%	0%	0%	0%
14D	Midweek	14%	31%	41%	53%	53%	55%	56%	45%	29%	22%	20%	16%	7%	0%	0%	0%	0%
14D	Weekend	7%	16%	20%	27%	28%	37%	56%	52%	49%	50%	44%	41%	29%	7%	0%	0%	0%
14F	Midweek	0%	0%	0%	33%	43%	62%	71%	52%	29%	29%	38%	38%	19%	0%	0%	0%	0%
14F	Weekend	5%	18%	50%	55%	64%	46%	41%	32%	14%	14%	23%	14%	9%	0%	0%	0%	0%
14H	Midweek	21%	48%	59%	61%	48%	44%	37%	21%	19%	11%	6%	4%	4%	0%	0%	0%	0%
14H	Weekend	11%	24%	23%	25%	21%	24%	38%	36%	36%	44%	52%	54%	48%	13%	0%	0%	0%
14I	Midweek	5%	9%	19%	44%	58%	72%	77%	72%	37%	33%	33%	28%	9%	0%	0%	0%	0%
14I	Weekend	2%	9%	23%	31%	37%	45%	67%	65%	55%	48%	35%	25%	10%	0%	0%	0%	0%
14M	Midweek	18%	42%	51%	53%	50%	46%	40%	26%	20%	11%	7%	6%	4%	0%	0%	0%	0%
14N	Midweek	12%	26%	47%	55%	64%	66%	58%	65%	28%	24%	19%	9%	0%	0%	0%	0%	0%
14N	Weekend	0%	8%	19%	28%	33%	42%	67%	67%	59%	51%	36%	25%	10%	0%	0%	0%	0%
14O	Midweek	9%	21%	30%	41%	53%	62%	70%	60%	40%	28%	26%	15%	6%	0%	0%	0%	0%
14O	Weekend	7%	22%	37%	47%	59%	66%	70%	69%	57%	51%	45%	32%	11%	0%	0%	0%	0%

Table 8: Daily Fishing Conditions.

Date	Day Type	Comox Mun	Cooper's Green	Deep Bay	French Ck	Kitty Coleman	Pacific Play	Schooner
29 Aug 2019	Midweek	calm/rippled						
30 Aug 2019	Midweek							
31 Aug 2019	Weekend							
01 Sep 2019	Weekend	calm/rippled		calm/rippled	calm/rippled			
02 Sep 2019	Weekend					calm/rippled	calm/rippled	
03 Sep 2019	Midweek				calm/rippled		calm/rippled	
04 Sep 2019	Midweek							
05 Sep 2019	Midweek	calm/rippled						
06 Sep 2019	Midweek					calm/rippled		
07 Sep 2019	Weekend		calm/rippled			calm/rippled		
08 Sep 2019	Weekend							choppy
09 Sep 2019	Midweek							
10 Sep 2019	Midweek							
11 Sep 2019	Midweek							
12 Sep 2019	Midweek							
13 Sep 2019	Midweek							
14 Sep 2019	Weekend							
15 Sep 2019	Weekend				calm/rippled			
16 Sep 2019	Midweek	calm/rippled						
17 Sep 2019	Midweek							
18 Sep 2019	Midweek							
19 Sep 2019	Midweek							
20 Sep 2019	Midweek						calm/rippled	
21 Sep 2019	Weekend							
22 Sep 2019	Weekend							
23 Sep 2019	Midweek				choppy			
24 Sep 2019	Midweek				calm/rippled			
25 Sep 2019	Midweek							
26 Sep 2019	Midweek							
27 Sep 2019	Midweek			frequent whitecaps				
28 Sep 2019	Weekend							
29 Sep 2019	Weekend				frequent whitecaps			
30 Sep 2019	Midweek							
01 Oct 2019	Midweek							
02 Oct 2019	Midweek							
03 Oct 2019	Midweek							