

FISHERIES AND OCEANS CANADA

SOUTH COAST ASSESSMENT BULLETIN

CREEL SURVEY DATA REVIEW PACKAGE

Area 18 September 2019



Prepared By:

South Coast Salmon Stock Assessment Section

Thursday 27th August, 2020



Fisheries and Oceans
Canada

Pêches et Océans
Canada

Table 1: Numbers of Interviews conducted contributing to the area by day and access site.

Date	Day Type	Cowichan Bay		Crofton Ramp		Sidney	
		AM	PM	AM	PM	AM	PM
29 Aug 2019	Midweek						
30 Aug 2019	Midweek						
31 Aug 2019	Weekend						
01 Sep 2019	Weekend						
02 Sep 2019	Weekend						
03 Sep 2019	Midweek	1					
04 Sep 2019	Midweek		2				
05 Sep 2019	Midweek						
06 Sep 2019	Midweek						
07 Sep 2019	Weekend		6			2	
08 Sep 2019	Weekend						
09 Sep 2019	Midweek						
10 Sep 2019	Midweek						
11 Sep 2019	Midweek				1		
12 Sep 2019	Midweek						
13 Sep 2019	Midweek						
14 Sep 2019	Weekend						
15 Sep 2019	Weekend						1
16 Sep 2019	Midweek						
17 Sep 2019	Midweek						
18 Sep 2019	Midweek						
19 Sep 2019	Midweek		2				
20 Sep 2019	Midweek			1			
21 Sep 2019	Weekend						
22 Sep 2019	Weekend						
23 Sep 2019	Midweek						
24 Sep 2019	Midweek						
25 Sep 2019	Midweek						
26 Sep 2019	Midweek						
27 Sep 2019	Midweek						
28 Sep 2019	Weekend		2				
29 Sep 2019	Weekend						
30 Sep 2019	Midweek						
01 Oct 2019	Midweek						
02 Oct 2019	Midweek						
03 Oct 2019	Midweek						

Table 2: Daily tally of interviews, catch and effort.

Date	Day	Average Fishing Conditions	Interviews & Log Trips	Chinook	Coho	Sockeye	Halibut	Observed Fishing	Flight Time	Expanded Fishing
29-Aug-2019	Thursday		0							
30-Aug-2019	Friday		0					10	1022	20
31-Aug-2019	Saturday		0							
01-Sep-2019	Sunday		0					34	1118	53
02-Sep-2019	Monday (Labour Day)		0							
03-Sep-2019	Tuesday	choppy	1							
04-Sep-2019	Wednesday	choppy	2							
05-Sep-2019	Thursday		0					13	1131	18
06-Sep-2019	Friday		0							
07-Sep-2019	Saturday	choppy	8	2						
08-Sep-2019	Sunday		0					8	1104	14
09-Sep-2019	Monday		0							
10-Sep-2019	Tuesday		0							
11-Sep-2019	Wednesday	choppy	1		1					
12-Sep-2019	Thursday		0					8	1120	11
13-Sep-2019	Friday		0							
14-Sep-2019	Saturday		0					10	1244	17
15-Sep-2019	Sunday	choppy	1		1					
16-Sep-2019	Monday		0							
17-Sep-2019	Tuesday		0							
18-Sep-2019	Wednesday		0							
19-Sep-2019	Thursday	choppy	2							
20-Sep-2019	Friday	calm/rippled	1					13	1123	18
21-Sep-2019	Saturday		0					10	1028	18
22-Sep-2019	Sunday		0							
23-Sep-2019	Monday		0					6	1123	8
24-Sep-2019	Tuesday		1	1						
25-Sep-2019	Wednesday		0							
26-Sep-2019	Thursday		0							
27-Sep-2019	Friday		0							
28-Sep-2019	Saturday	frequent whitecaps	2							
29-Sep-2019	Sunday		0							
30-Sep-2019	Monday		0							
01-Oct-2019	Tuesday		1							
02-Oct-2019	Wednesday		0							
03-Oct-2019	Thursday		0							
	Totals	choppy	8	1	1			10*		14*
	Totals	choppy	11	2	1			16*		26*

* Average number of boats Observed and Expanded

Table 3: Simple area based cpue (catch per boat trip) expansion.

Day Type	Average Expanded Boats	Number of Days	Total Estimated Effort	CPUE				Retained			
				Chinook	Coho	Sockeye	Halibut	Chinook	Coho	Sockeye	Halibut
Weekend	26	10	260	0.1820	0.0910			47	24		
Midweek	14	20	280	0.1250	0.1250			35	35		

Table 4: Recent years estimates of retained catch and effort.

Year	Month	Total Effort	Chinook Kept	Coho Kept	Sockeye Kept	Halibut Kept
2014	September					
2015	September	1554	460			
2016	September	823	133	11		
2017	September	1396	604	11		
2018	September	394	22	16		
2019	September	532	54	40		0
5-Yr Avg	September	1042	305	13		

Table 5: Sport Head Recovery Review.

Species	Creel Marked Catch	Creel Mark Rate	Creel Submission Rate	iRec Marked Catch	iRec Mark Rate	iRec Submission Rate	Sport Head Recoveries
---------	--------------------	-----------------	-----------------------	-------------------	----------------	----------------------	-----------------------

Table 6: Guided Proprtions Review.

Data Source	Interviews / Angler Days	Guided Proportion
Creel Interivews	18	0%
iRec Anglers	2047	2%
iRec Responses	29	0%

Figure 1: Proportion of each day's fishing by hour.

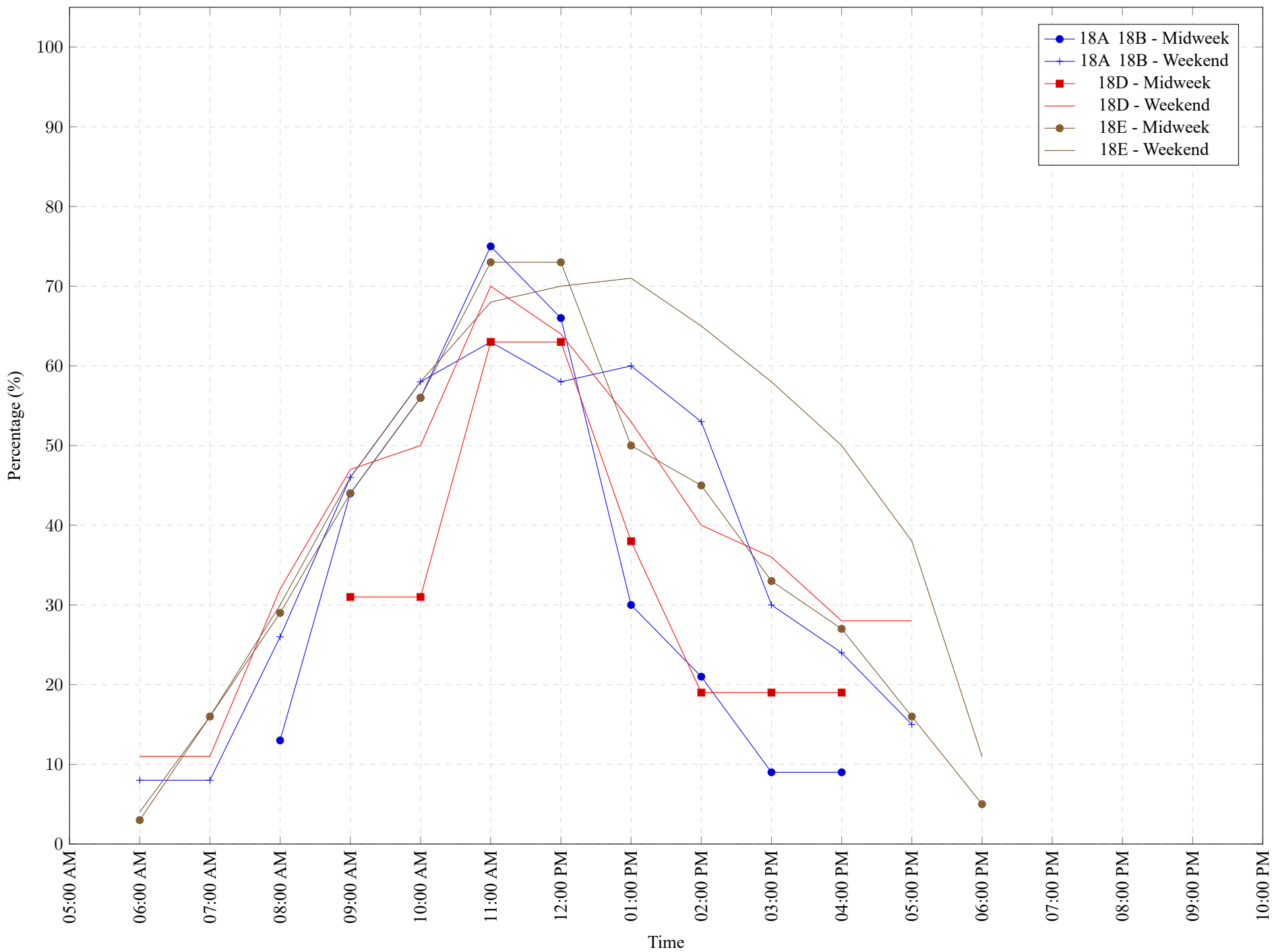


Table 7: Proportion of each day's fishing by hour.

Areas	Day Type	6:00 AM	7:00 AM	8:00 AM	9:00 AM	10:00 AM	11:00 AM	12:00 PM	01:00 PM	02:00 PM	03:00 PM	04:00 PM	05:00 PM	06:00 PM	07:00 PM	08:00 PM	09:00 PM	10:00 PM
18A 18B	Midweek	0%	0%	13%	44%	56%	75%	66%	30%	21%	9%	9%	0%	0%	0%	0%	0%	0%
18A 18B	Weekend	8%	8%	26%	46%	58%	63%	58%	60%	53%	30%	24%	15%	0%	0%	0%	0%	0%
18D	Midweek	0%	0%	0%	31%	31%	63%	63%	38%	19%	19%	19%	0%	0%	0%	0%	0%	0%
18D	Weekend	11%	11%	32%	47%	50%	70%	64%	53%	40%	36%	28%	28%	0%	0%	0%	0%	0%
18E	Midweek	3%	16%	29%	44%	56%	73%	73%	50%	45%	33%	27%	16%	5%	0%	0%	0%	0%
18E	Weekend	4%	16%	30%	46%	58%	68%	70%	71%	65%	58%	50%	38%	11%	0%	0%	0%	0%

Table 8: Daily Fishing Conditions.

Date	Day Type	Cowichan Bay	Crofton Ramp	Sidney
29 Aug 2019	Midweek			
30 Aug 2019	Midweek			
31 Aug 2019	Weekend			
01 Sep 2019	Weekend			
02 Sep 2019	Weekend			
03 Sep 2019	Midweek	choppy		
04 Sep 2019	Midweek	choppy		
05 Sep 2019	Midweek			
06 Sep 2019	Midweek			
07 Sep 2019	Weekend	choppy		calm/rippled
08 Sep 2019	Weekend			
09 Sep 2019	Midweek			
10 Sep 2019	Midweek			
11 Sep 2019	Midweek		choppy	
12 Sep 2019	Midweek			
13 Sep 2019	Midweek			
14 Sep 2019	Weekend			
15 Sep 2019	Weekend			choppy
16 Sep 2019	Midweek			
17 Sep 2019	Midweek			
18 Sep 2019	Midweek			
19 Sep 2019	Midweek	choppy		
20 Sep 2019	Midweek		calm/rippled	
21 Sep 2019	Weekend			
22 Sep 2019	Weekend			
23 Sep 2019	Midweek			
24 Sep 2019	Midweek			
25 Sep 2019	Midweek			
26 Sep 2019	Midweek			
27 Sep 2019	Midweek			
28 Sep 2019	Weekend	frequent whitecaps		
29 Sep 2019	Weekend			
30 Sep 2019	Midweek			
01 Oct 2019	Midweek			
02 Oct 2019	Midweek			
03 Oct 2019	Midweek			