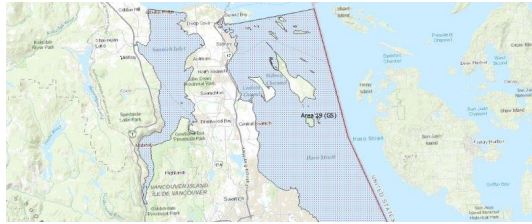


FISHERIES AND OCEANS CANADA

SOUTH COAST ASSESSMENT BULLETIN

CREEL SURVEY DATA REVIEW PACKAGE

Area 19 (GS) September 2019



Prepared By:
South Coast Salmon Stock Assessment Section

Thursday 27th August, 2020



Fisheries and Oceans
Canada

Pêches et Océans
Canada



Table 1: Numbers of Interviews conducted contributing to the area by day and access site.

Date	Day Type	Cattle Point PM	Cowichan Bay PM	Sidney	
				AM	PM
29 Aug 2019	Midweek				
30 Aug 2019	Midweek				
31 Aug 2019	Weekend				
01 Sep 2019	Weekend				
02 Sep 2019	Weekend				
03 Sep 2019	Midweek				
04 Sep 2019	Midweek				
05 Sep 2019	Midweek				
06 Sep 2019	Midweek	1			
07 Sep 2019	Weekend		1	5	
08 Sep 2019	Weekend				
09 Sep 2019	Midweek				
10 Sep 2019	Midweek			1	
11 Sep 2019	Midweek				
12 Sep 2019	Midweek				
13 Sep 2019	Midweek				
14 Sep 2019	Weekend				
15 Sep 2019	Weekend				2
16 Sep 2019	Midweek				
17 Sep 2019	Midweek				
18 Sep 2019	Midweek				
19 Sep 2019	Midweek				
20 Sep 2019	Midweek				
21 Sep 2019	Weekend				
22 Sep 2019	Weekend				
23 Sep 2019	Midweek				
24 Sep 2019	Midweek				
25 Sep 2019	Midweek				
26 Sep 2019	Midweek				
27 Sep 2019	Midweek				
28 Sep 2019	Weekend				
29 Sep 2019	Weekend				
30 Sep 2019	Midweek				3
01 Oct 2019	Midweek				
02 Oct 2019	Midweek				
03 Oct 2019	Midweek				

Table 2: Daily tally of interviews, catch and effort.

Date	Day	Average Fishing Conditions	Interviews & Log Trips	Chinook	Coho	Sockeye	Halibut	Observed Fishing	Flight Time	Expanded Fishing
29-Aug-2019	Thursday		0							
30-Aug-2019	Friday		0					1	0904	4
31-Aug-2019	Saturday		0							
01-Sep-2019	Sunday		0					15	1027	33
02-Sep-2019	Monday (Labour Day)		0							
03-Sep-2019	Tuesday		0							
04-Sep-2019	Wednesday		0							
05-Sep-2019	Thursday		0					4	1033	8
06-Sep-2019	Friday	choppy	1							
07-Sep-2019	Saturday	calm/rippled	6							
08-Sep-2019	Sunday		0					2	1022	4
09-Sep-2019	Monday		0							
10-Sep-2019	Tuesday	calm/rippled	1							
11-Sep-2019	Wednesday		0							
12-Sep-2019	Thursday		0					5	1029	14
13-Sep-2019	Friday		0							
14-Sep-2019	Saturday		0					2	1149	4
15-Sep-2019	Sunday	choppy	2							
16-Sep-2019	Monday		0							
17-Sep-2019	Tuesday		0							
18-Sep-2019	Wednesday		0							
19-Sep-2019	Thursday		0							
20-Sep-2019	Friday		0					8	1030	22
21-Sep-2019	Saturday		0					20	1326	38
22-Sep-2019	Sunday		0							
23-Sep-2019	Monday		0					3	1035	6
24-Sep-2019	Tuesday		0							
25-Sep-2019	Wednesday		0							
26-Sep-2019	Thursday		0							
27-Sep-2019	Friday		0							
28-Sep-2019	Saturday		0							
29-Sep-2019	Sunday		0							
30-Sep-2019	Monday	calm/rippled	3							
01-Oct-2019	Tuesday		0							
02-Oct-2019	Wednesday		0							
03-Oct-2019	Thursday		0							
	Totals	calm/rippled	5					5*		13*
	Totals	choppy	8					10*		20*

* Average number of boats Observed and Expanded

Table 3: Simple area based cpue (catch per boat trip) expansion.

Day Type	Average Expanded Boats	Number of Days	Total Estimated Effort	CPUE				Retained			
				Chinook	Coho	Sockeye	Halibut	Chinook	Coho	Sockeye	Halibut
Midweek	13	20	260								
Weekend	20	10	200								

Table 4: Recent years estimates of retained catch and effort.

Year	Month	Total Effort	Chinook Kept	Coho Kept	Sockeye Kept	Halibut Kept
2014	September	360	5			
2015	September	239	35			
2016	September	280				
2017	September	422	23			
2018	September	367	35			
2019	September	446	15	5		0
5-Yr Avg	September	334	25			

Table 5: Sport Head Recovery Review.

Species	Creel Marked Catch	Creel Mark Rate	Creel Submission Rate	iRec Marked Catch	iRec Mark Rate	iRec Submission Rate	Sport Head Recoveries
---------	--------------------	-----------------	-----------------------	-------------------	----------------	----------------------	-----------------------

Table 6: Guided Proprtions Review.

Data Source	Interviews / Angler Days	Guided Proportion
Creel Interivews	13	0%
iRec Anglers	778	11%
iRec Responses	7	0%

Figure 1: Proportion of each day's fishing by hour.

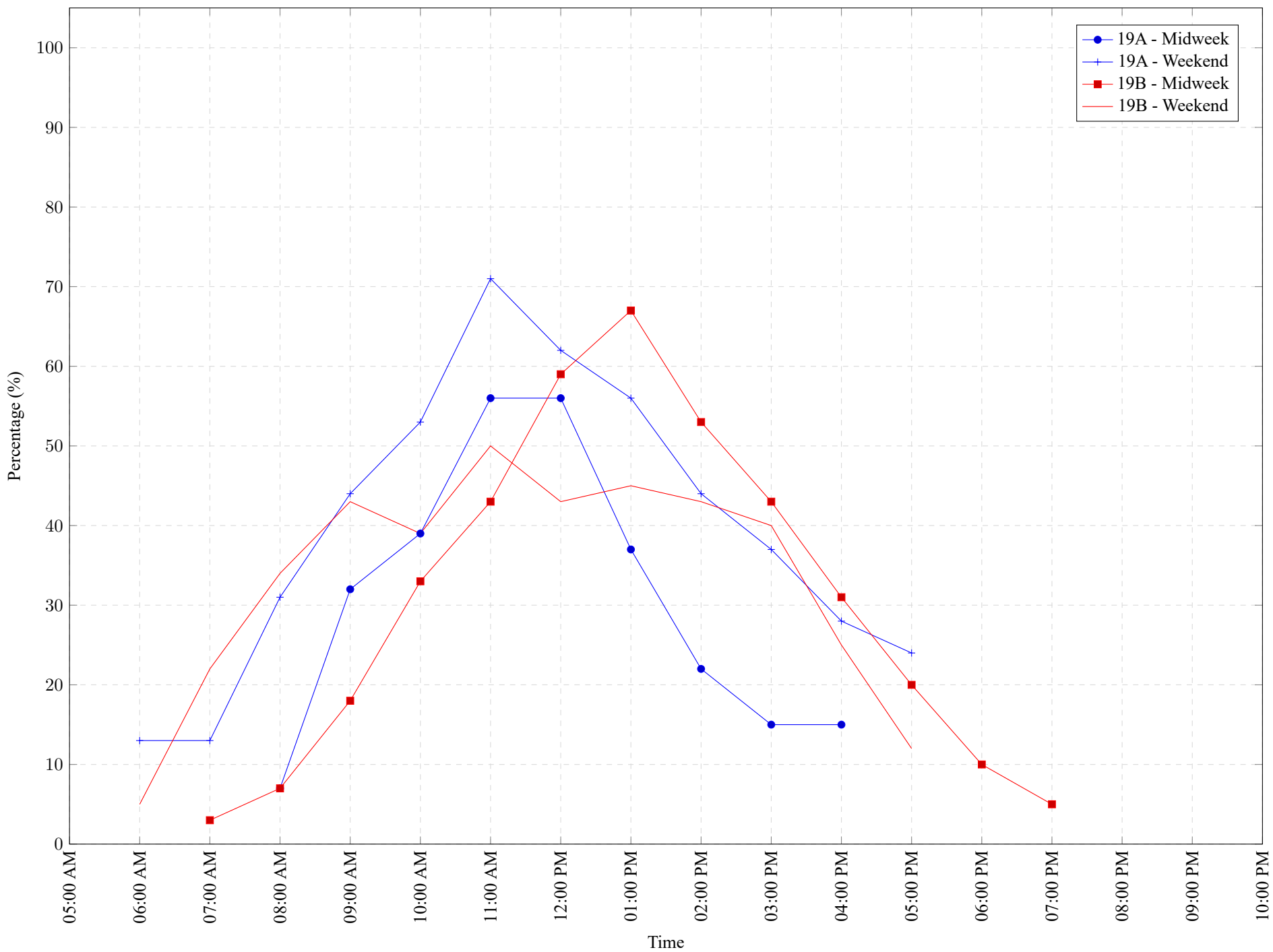


Table 7: Proportion of each day's fishing by hour.

Areas	Day Type	6:00	7:00	8:00	9:00	10:00	11:00	12:00	01:00	02:00	03:00	04:00	05:00	06:00	07:00	08:00	09:00	10:00
		AM	AM	AM	AM	AM	AM	PM	PM	PM	PM	PM	PM	PM	PM	PM	PM	PM
19A	Midweek	0%	0%	7%	32%	39%	56%	56%	37%	22%	15%	15%	0%	0%	0%	0%	0%	0%
19A	Weekend	13%	13%	31%	44%	53%	71%	62%	56%	44%	37%	28%	24%	0%	0%	0%	0%	0%
19B	Midweek	0%	3%	7%	18%	33%	43%	59%	67%	53%	43%	31%	20%	10%	5%	0%	0%	0%
19B	Weekend	5%	22%	34%	43%	39%	50%	43%	45%	43%	40%	25%	12%	0%	0%	0%	0%	0%

Table 8: Daily Fishing Conditions.

Date	Day Type	Cattle Point	Cowichan Bay	Sidney
29 Aug 2019	Midweek			
30 Aug 2019	Midweek			
31 Aug 2019	Weekend			
01 Sep 2019	Weekend			
02 Sep 2019	Weekend			
03 Sep 2019	Midweek			
04 Sep 2019	Midweek			
05 Sep 2019	Midweek			
06 Sep 2019	Midweek	choppy		
07 Sep 2019	Weekend		choppy	calm/rippled
08 Sep 2019	Weekend			
09 Sep 2019	Midweek			
10 Sep 2019	Midweek			calm/rippled
11 Sep 2019	Midweek			
12 Sep 2019	Midweek			
13 Sep 2019	Midweek			
14 Sep 2019	Weekend			
15 Sep 2019	Weekend			choppy
16 Sep 2019	Midweek			
17 Sep 2019	Midweek			
18 Sep 2019	Midweek			
19 Sep 2019	Midweek			
20 Sep 2019	Midweek			
21 Sep 2019	Weekend			
22 Sep 2019	Weekend			
23 Sep 2019	Midweek			
24 Sep 2019	Midweek			
25 Sep 2019	Midweek			
26 Sep 2019	Midweek			
27 Sep 2019	Midweek			
28 Sep 2019	Weekend			
29 Sep 2019	Weekend			
30 Sep 2019	Midweek			calm/rippled
01 Oct 2019	Midweek			
02 Oct 2019	Midweek			
03 Oct 2019	Midweek			