

FISHERIES AND OCEANS CANADA

SOUTH COAST ASSESSMENT BULLETIN

CREEL SURVEY DATA REVIEW PACKAGE

Area 28 September 2019



Prepared By:
South Coast Salmon Stock Assessment Section

Thursday 27th August, 2020



Fisheries and Oceans
Canada

Pêches et Océans
Canada



Table 1: Numbers of Interviews conducted contributing to the area by day and access site.

Date	Day Type	McDon- ald Beach	Planetarium		Sewell's West	Thunder- bird Marina
		PM	AM	PM	PM	PM
29 Aug 2019	Midweek					
30 Aug 2019	Midweek					3
31 Aug 2019	Weekend			6		
01 Sep 2019	Weekend	2				
02 Sep 2019	Weekend					
03 Sep 2019	Midweek					
04 Sep 2019	Midweek		1			
05 Sep 2019	Midweek					
06 Sep 2019	Midweek				5	
07 Sep 2019	Weekend					
08 Sep 2019	Weekend			6		
09 Sep 2019	Midweek					
10 Sep 2019	Midweek					
11 Sep 2019	Midweek	1				
12 Sep 2019	Midweek					
13 Sep 2019	Midweek					1
14 Sep 2019	Weekend					
15 Sep 2019	Weekend					
16 Sep 2019	Midweek					1
17 Sep 2019	Midweek					
18 Sep 2019	Midweek					
19 Sep 2019	Midweek					
20 Sep 2019	Midweek	1				
21 Sep 2019	Weekend					1
22 Sep 2019	Weekend					
23 Sep 2019	Midweek					
24 Sep 2019	Midweek					
25 Sep 2019	Midweek			5		
26 Sep 2019	Midweek					
27 Sep 2019	Midweek					
28 Sep 2019	Weekend				1	
29 Sep 2019	Weekend					
30 Sep 2019	Midweek					
01 Oct 2019	Midweek					
02 Oct 2019	Midweek					
03 Oct 2019	Midweek					

Table 2: Daily tally of interviews, catch and effort.

Date	Day	Average Fishing Conditions	Interviews & Log Trips	Chinook	Coho	Sockeye	Halibut	Observed Fishing	Flight Time	Expanded Fishing
29-Aug-2019	Thursday		0							
30-Aug-2019	Friday	choppy	3	3				12	1156	16
31-Aug-2019	Saturday	calm/rippled	6	6						
01-Sep-2019	Sunday	calm/rippled	2					5	1255	7
02-Sep-2019	Monday (Labour Day)		0							
03-Sep-2019	Tuesday		0							
04-Sep-2019	Wednesday	choppy	1							
05-Sep-2019	Thursday		0					15	1307	21
06-Sep-2019	Friday	choppy	5							
07-Sep-2019	Saturday		0							
08-Sep-2019	Sunday	choppy	6	2	2			25	1239	35
09-Sep-2019	Monday		0							
10-Sep-2019	Tuesday		0							
11-Sep-2019	Wednesday	choppy	1							
12-Sep-2019	Thursday		1	2				12	1252	17
13-Sep-2019	Friday	calm/rippled	2	2						
14-Sep-2019	Saturday		0					26	1225	36
15-Sep-2019	Sunday		0							
16-Sep-2019	Monday	calm/rippled	1							
17-Sep-2019	Tuesday		0							
18-Sep-2019	Wednesday		0							
19-Sep-2019	Thursday		0							
20-Sep-2019	Friday	calm/rippled	2					52	1256	74
21-Sep-2019	Saturday	calm/rippled	2					80	1157	111
22-Sep-2019	Sunday		1	2						
23-Sep-2019	Monday		0					9	1250	13
24-Sep-2019	Tuesday		0							
25-Sep-2019	Wednesday	calm/rippled	5	1	1					
26-Sep-2019	Thursday		0							
27-Sep-2019	Friday		0							
28-Sep-2019	Saturday	frequent whitecaps	1	1	1					
29-Sep-2019	Sunday		0							
30-Sep-2019	Monday		1	2						
01-Oct-2019	Tuesday		0							
02-Oct-2019	Wednesday		0							
03-Oct-2019	Thursday		0							
	Totals	calm/rippled	19	7	1			22*		31*
	Totals	choppy	12	5	3			34*		47*

* Average number of boats Observed and Expanded

Table 3: Simple area based cpue (catch per boat trip) expansion.

Day Type	Average Expanded Boats	Number of Days	Total Estimated Effort	CPUE				Retained			
				Chinook	Coho	Sockeye	Halibut	Chinook	Coho	Sockeye	Halibut
Weekend	47	10	470	0.4170	0.25			196	118		
Midweek	31	20	620	0.3680	0.0530			228	33		

Table 4: Recent years estimates of retained catch and effort.

Year	Month	Total Effort	Chinook Kept	Coho Kept	Sockeye Kept	Halibut Kept
2014	September	2229	499	659	90	
2015	September	1485	459	184		
2016	September	1439	213	54		
2017	September	2963	1262	657		
2018	September	2131	391	358		
2019	September	1132	198	190		0
5-Yr Avg	September	2049	565	382	90	

Table 5: Sport Head Recovery Review.

Species	Creel Marked Catch	Creel Mark Rate	Creel Submission Rate	iRec Marked Catch	iRec Mark Rate	iRec Submission Rate	Sport Head Recoveries
Coho	190	100%	2%	77	100%	5%	4
Chinook	1	1%	900%	371	52%	2%	9

Table 6: Guided Proprtions Review.

Data Source	Interviews / Angler Days	Guided Proportion
Creel Interivews	31	12%
iRec Anglers	3256	23%
iRec Responses	70	1%

Figure 1: Proportion of each day's fishing by hour.

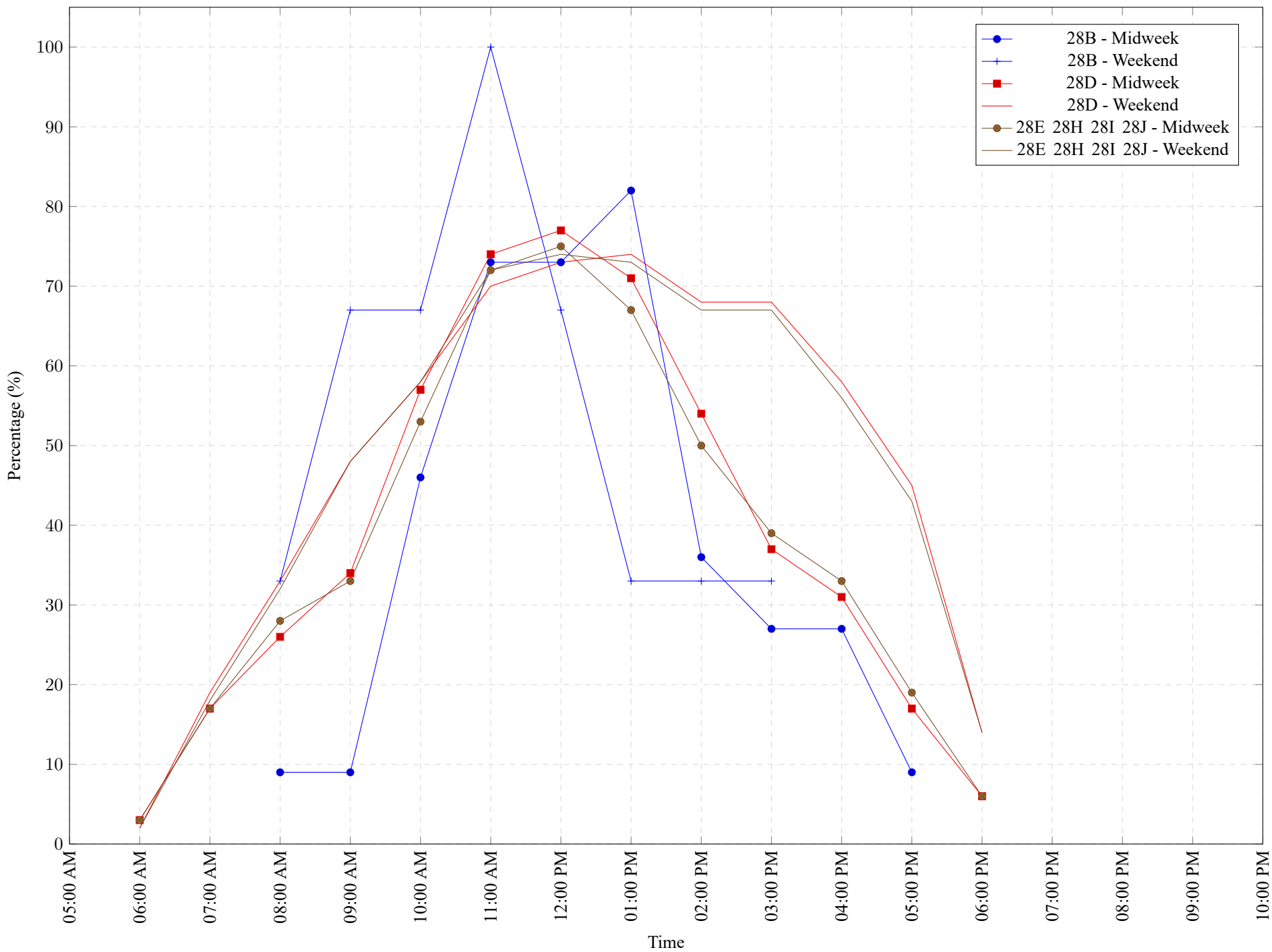


Table 7: Proportion of each day's fishing by hour.

Areas	Day Type	6:00	7:00	8:00	9:00	10:00	11:00	12:00	01:00	02:00	03:00	04:00	05:00	06:00	07:00	08:00	09:00	10:00
		AM	AM	AM	AM	AM	AM	PM	PM	PM	PM	PM	PM	PM	PM	PM	PM	PM
28B	Midweek	0%	0%	9%	9%	46%	73%	73%	82%	36%	27%	27%	9%	0%	0%	0%	0%	0%
28B	Weekend	0%	0%	33%	67%	67%	100%	67%	33%	33%	33%	0%	0%	0%	0%	0%	0%	0%
28D	Midweek	3%	17%	26%	34%	57%	74%	77%	71%	54%	37%	31%	17%	6%	0%	0%	0%	0%
28D	Weekend	2%	19%	33%	48%	58%	70%	73%	74%	68%	68%	58%	45%	14%	0%	0%	0%	0%
28E 28H 28I 28J	Midweek	3%	17%	28%	33%	53%	72%	75%	67%	50%	39%	33%	19%	6%	0%	0%	0%	0%
28E 28H 28I 28J	Weekend	2%	18%	32%	48%	58%	72%	74%	73%	67%	67%	56%	43%	14%	0%	0%	0%	0%

Table 8: Daily Fishing Conditions.

Date	Day Type	McDonald Beach	Planetarium	Sewell's West	Thunderbird Marina
29 Aug 2019	Midweek				
30 Aug 2019	Midweek				choppy
31 Aug 2019	Weekend		calm/rippled		
01 Sep 2019	Weekend	calm/rippled			
02 Sep 2019	Weekend				
03 Sep 2019	Midweek				
04 Sep 2019	Midweek		choppy		
05 Sep 2019	Midweek				
06 Sep 2019	Midweek			choppy	
07 Sep 2019	Weekend				
08 Sep 2019	Weekend		choppy		
09 Sep 2019	Midweek				
10 Sep 2019	Midweek				
11 Sep 2019	Midweek	choppy			
12 Sep 2019	Midweek				
13 Sep 2019	Midweek				calm/rippled
14 Sep 2019	Weekend				
15 Sep 2019	Weekend				
16 Sep 2019	Midweek				calm/rippled
17 Sep 2019	Midweek				
18 Sep 2019	Midweek				
19 Sep 2019	Midweek				
20 Sep 2019	Midweek	calm/rippled			
21 Sep 2019	Weekend				calm/rippled
22 Sep 2019	Weekend				
23 Sep 2019	Midweek				
24 Sep 2019	Midweek				
25 Sep 2019	Midweek		calm/rippled		
26 Sep 2019	Midweek				
27 Sep 2019	Midweek				
28 Sep 2019	Weekend			frequent whitecaps	
29 Sep 2019	Weekend				
30 Sep 2019	Midweek				
01 Oct 2019	Midweek				
02 Oct 2019	Midweek				
03 Oct 2019	Midweek				