

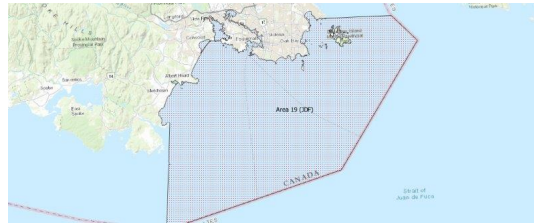
# FISHERIES AND OCEANS CANADA

## SOUTH COAST ASSESSMENT BULLETIN

### CREEL SURVEY DATA REVIEW PACKAGE

---

## Area 19 (JDF) October 2019



*Prepared By:*

South Coast Salmon Stock Assessment Section

Thursday 27<sup>th</sup> August, 2020



Fisheries and Oceans  
Canada

Pêches et Océans  
Canada



**Table 1: Numbers of Interviews conducted contributing to the area by day and access site.**

Date	Day Type	Cattle Point		Flemming		Jock's Dock (Crab Shack)	Pedder Bay	
		AM	PM	AM	PM	PM	AM	PM
28 Sep 2019	Weekend					1		
29 Sep 2019	Weekend			8				
30 Sep 2019	Midweek							
01 Oct 2019	Midweek							
02 Oct 2019	Midweek							
03 Oct 2019	Midweek	3						
04 Oct 2019	Midweek				6			
05 Oct 2019	Weekend						2	
06 Oct 2019	Weekend				11			
07 Oct 2019	Midweek							
08 Oct 2019	Midweek							
09 Oct 2019	Midweek							
10 Oct 2019	Midweek							
11 Oct 2019	Midweek							
12 Oct 2019	Weekend							
13 Oct 2019	Weekend		13					
14 Oct 2019	Weekend							
15 Oct 2019	Midweek							
16 Oct 2019	Midweek							
17 Oct 2019	Midweek		2					
18 Oct 2019	Midweek							
19 Oct 2019	Weekend			4				1
20 Oct 2019	Weekend							
21 Oct 2019	Midweek							
22 Oct 2019	Midweek							
23 Oct 2019	Midweek							
24 Oct 2019	Midweek							
25 Oct 2019	Midweek							
26 Oct 2019	Weekend							
27 Oct 2019	Weekend							
28 Oct 2019	Midweek							
29 Oct 2019	Midweek			2				
30 Oct 2019	Midweek							
31 Oct 2019	Midweek							
01 Nov 2019	Midweek							
02 Nov 2019	Weekend							
03 Nov 2019	Weekend							

Table 2: Daily tally of interviews, catch and effort.

Date	Day	Average Fishing Conditions	Interviews & Log Trips	Chinook	Coho	Sockeye	Halibut	Observed Fishing	Flight Time	Expanded Fishing
28-Sep-2019	Saturday	choppy	1							
29-Sep-2019	Sunday	choppy	8		1					
30-Sep-2019	Monday		0							
01-Oct-2019	Tuesday		0							
02-Oct-2019	Wednesday		0							
03-Oct-2019	Thursday	choppy	3							
04-Oct-2019	Friday	calm/rippled	6		3					
05-Oct-2019	Saturday	calm/rippled	2							
06-Oct-2019	Sunday	calm/rippled	11	2	4			46	1121	76
07-Oct-2019	Monday		0							
08-Oct-2019	Tuesday		0							
09-Oct-2019	Wednesday		0							
10-Oct-2019	Thursday		0							
11-Oct-2019	Friday		0					10	1134	16
12-Oct-2019	Saturday		0					22	1133	36
13-Oct-2019	Sunday	calm/rippled	13	3						
14-Oct-2019	Monday (Thanksgiving)		0							
15-Oct-2019	Tuesday		0							
16-Oct-2019	Wednesday		0							
17-Oct-2019	Thursday	choppy	2					0	1134	0
18-Oct-2019	Friday		0							
19-Oct-2019	Saturday	frequent whitecaps	5		1					
20-Oct-2019	Sunday		0					4	1148	7
21-Oct-2019	Monday		0							
22-Oct-2019	Tuesday		0							
23-Oct-2019	Wednesday		0							
24-Oct-2019	Thursday		0							
25-Oct-2019	Friday		0							
26-Oct-2019	Saturday		0							
27-Oct-2019	Sunday		0							
28-Oct-2019	Monday		0							
29-Oct-2019	Tuesday	calm/rippled	2					0	1132	0
30-Oct-2019	Wednesday		0							
31-Oct-2019	Thursday		0							
01-Nov-2019	Friday		0							
02-Nov-2019	Saturday		0							
03-Nov-2019	Sunday		0							
	Totals	choppy	13		3			3*		5*
	Totals	choppy	31	5	5			24*		40*

\* Average number of boats Observed and Expanded

**Table 3: Simple area based cpue (catch per boat trip) expansion.**

Day Type	Average Expanded Boats	Number of Days	Total Estimated Effort	CPUE				Retained			
				Chinook	Coho	Sockeye	Halibut	Chinook	Coho	Sockeye	Halibut
Midweek	5	22	110		0.2310				25		
Weekend	40	9	360	0.1610	0.1610			58	58		

**Table 4: Recent years estimates of retained catch and effort.**

Year	Month	Total Effort	Chinook Kept	Coho Kept	Sockeye Kept	Halibut Kept
2014	October	722	7	269		63
2015	October	814	3	190		132
2017	October	282	211	36		
2018	October	1507	661	62		9
2019	October	469	63	168		0
5-Yr Avg	October	831	221	139		68

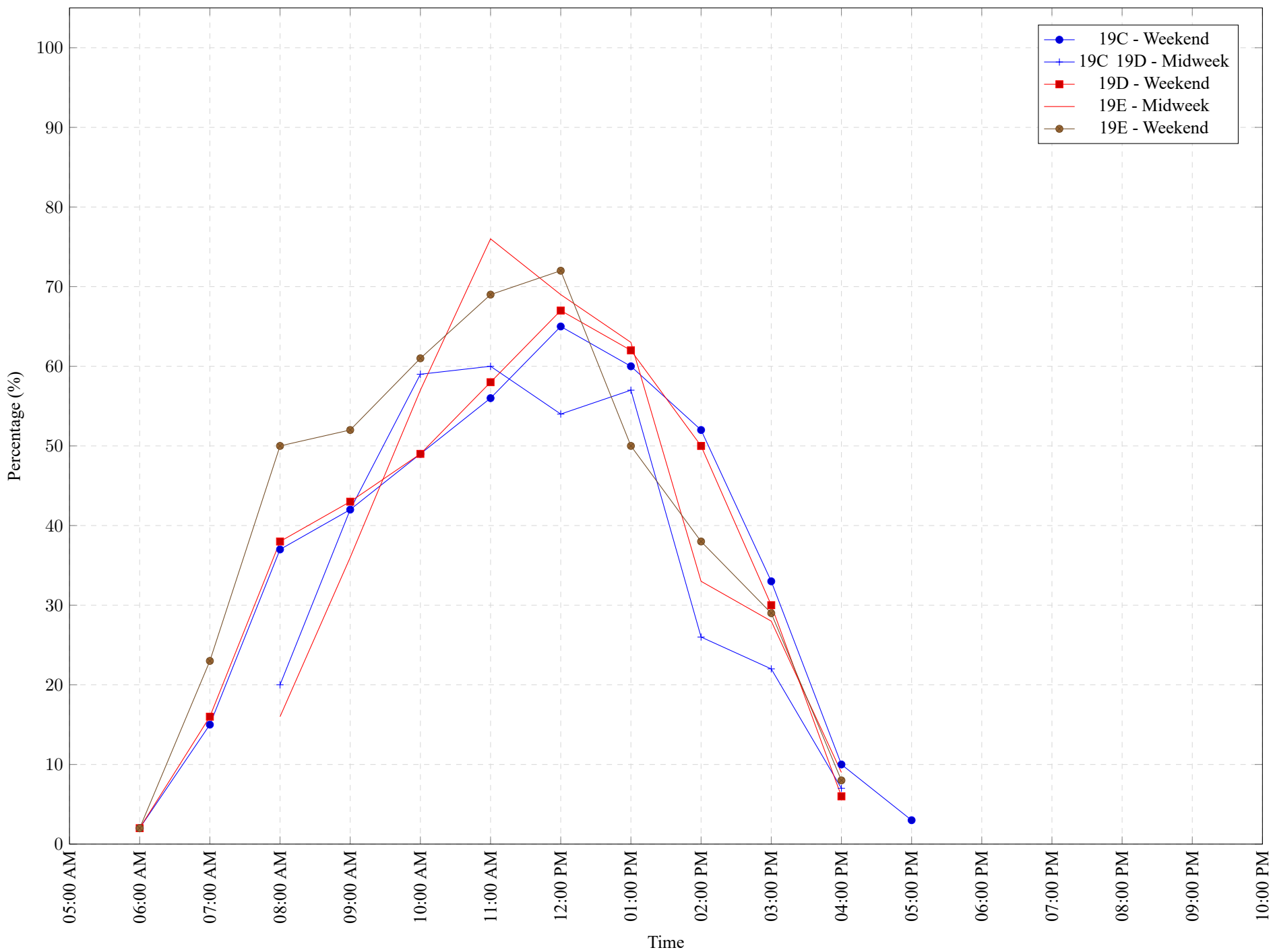
**Table 5: Sport Head Recovery Review.**

Species	Creel Marked Catch	Creel Mark Rate	Creel Submission Rate	iRec Marked Catch	iRec Mark Rate	iRec Submission Rate	Sport Head Recoveries
Chinook	43	68%	21%	31	49%	29%	9

**Table 6: Guided Proprtions Review.**

Data Source	Interviews / Angler Days	Guided Proportion
Creel Interivews	44	0%
iRec Anglers	766	6%
iRec Responses	18	0%

Figure 1: Proportion of each day's fishing by hour.



**Table 7: Proportion of each day's fishing by hour.**

Areas	Day Type	6:00 AM	7:00 AM	8:00 AM	9:00 AM	10:00 AM	11:00 AM	12:00 PM	01:00 PM	02:00 PM	03:00 PM	04:00 PM	05:00 PM	06:00 PM	07:00 PM	08:00 PM	09:00 PM	10:00 PM
19C	Weekend	2%	15%	37%	42%	49%	56%	65%	60%	52%	33%	10%	3%	0%	0%	0%	0%	0%
19C 19D	Midweek	0%	0%	20%	42%	59%	60%	54%	57%	26%	22%	7%	0%	0%	0%	0%	0%	0%
19D	Weekend	2%	16%	38%	43%	49%	58%	67%	62%	50%	30%	6%	0%	0%	0%	0%	0%	0%
19E	Midweek	0%	0%	16%	36%	57%	76%	69%	63%	33%	28%	9%	0%	0%	0%	0%	0%	0%
19E	Weekend	2%	23%	50%	52%	61%	69%	72%	50%	38%	29%	8%	0%	0%	0%	0%	0%	0%

**Table 8: Daily Fishing Conditions.**

Date	Day Type	Cattle Point	Flemming	Jock's Dock (Crab Shack)	Pedder Bay
28 Sep 2019	Weekend			choppy	
29 Sep 2019	Weekend		choppy		
30 Sep 2019	Midweek				
01 Oct 2019	Midweek				
02 Oct 2019	Midweek				
03 Oct 2019	Midweek	choppy			
04 Oct 2019	Midweek		calm/rippled		
05 Oct 2019	Weekend				calm/rippled
06 Oct 2019	Weekend		calm/rippled		
07 Oct 2019	Midweek				
08 Oct 2019	Midweek				
09 Oct 2019	Midweek				
10 Oct 2019	Midweek				
11 Oct 2019	Midweek				
12 Oct 2019	Weekend				
13 Oct 2019	Weekend	calm/rippled			
14 Oct 2019	Weekend				
15 Oct 2019	Midweek				
16 Oct 2019	Midweek				
17 Oct 2019	Midweek	choppy			
18 Oct 2019	Midweek				
19 Oct 2019	Weekend		frequent whitecaps		frequent whitecaps
20 Oct 2019	Weekend				
21 Oct 2019	Midweek				
22 Oct 2019	Midweek				
23 Oct 2019	Midweek				
24 Oct 2019	Midweek				
25 Oct 2019	Midweek				
26 Oct 2019	Weekend				
27 Oct 2019	Weekend				
28 Oct 2019	Midweek				
29 Oct 2019	Midweek		calm/rippled		
30 Oct 2019	Midweek				
31 Oct 2019	Midweek				
01 Nov 2019	Midweek				
02 Nov 2019	Weekend				
03 Nov 2019	Weekend				