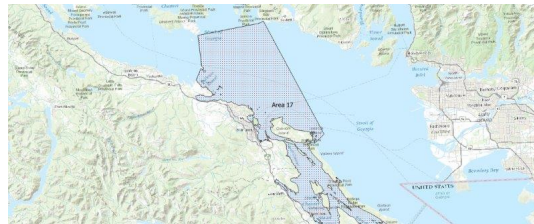


FISHERIES AND OCEANS CANADA

SOUTH COAST ASSESSMENT BULLETIN

CREEL SURVEY DATA REVIEW PACKAGE

Area 17 July 2020



Prepared By:
South Coast Salmon Stock Assessment Section

Tuesday 2nd February, 2021



Fisheries and Oceans
Canada

Pêches et Océans
Canada



Table 1: Numbers of Interviews conducted contributing to the area by day and access site.

Date	Day Type	Brechin		Cowichan Bay	Crofton Ramp		Ladysmith		McDonald Beach		Planetarium	Schooner	
		AM	PM	PM	AM	PM	AM	PM	AM	PM	PM	AM	PM
28 Jun 2020	Weekend					3							
29 Jun 2020	Midweek		23										
30 Jun 2020	Midweek				1								
01 Jul 2020	Weekend											1	
02 Jul 2020	Midweek												
03 Jul 2020	Midweek		1						1				
04 Jul 2020	Weekend					6							7
05 Jul 2020	Weekend										2		
06 Jul 2020	Midweek				6			1					
07 Jul 2020	Midweek	4											
08 Jul 2020	Midweek												3
09 Jul 2020	Midweek												
10 Jul 2020	Midweek							2					
11 Jul 2020	Weekend	10											
12 Jul 2020	Weekend							22					
13 Jul 2020	Midweek												4
14 Jul 2020	Midweek							7					
15 Jul 2020	Midweek		19		3								
16 Jul 2020	Midweek												
17 Jul 2020	Midweek					1							
18 Jul 2020	Weekend												3
19 Jul 2020	Weekend												
20 Jul 2020	Midweek												
21 Jul 2020	Midweek					8							7
22 Jul 2020	Midweek							11					
23 Jul 2020	Midweek									1			
24 Jul 2020	Midweek												
25 Jul 2020	Weekend			1				22	2				
26 Jul 2020	Weekend		17							2			
27 Jul 2020	Midweek							3					
28 Jul 2020	Midweek	10											
29 Jul 2020	Midweek					4							
30 Jul 2020	Midweek							5					
31 Jul 2020	Midweek		22										2
01 Aug 2020	Weekend												
02 Aug 2020	Weekend									8			
03 Aug 2020	Weekend												

Table 2: Daily tally of interviews, catch and effort.

Date	Day	Average Fishing Conditions	Interviews & Log Trips	Chinook	Coho	Sockeye	Halibut	Observed Fishing	Flight Time	Expanded Fishing
28-Jun-2020	Sunday	calm/rippled	3							
29-Jun-2020	Monday	choppy	23					31	1236	88
30-Jun-2020	Tuesday	calm/rippled	1					7	1254	20
01-Jul-2020	Wednesday (Canada Day)	choppy	1					13	1250	26
02-Jul-2020	Thursday		0							
03-Jul-2020	Friday	choppy	2							
04-Jul-2020	Saturday	calm/rippled	14		1			84	1232	176
05-Jul-2020	Sunday	calm/rippled	3							
06-Jul-2020	Monday	calm/rippled	7					18	1227	53
07-Jul-2020	Tuesday	calm/rippled	4					14	1233	40
08-Jul-2020	Wednesday	choppy	3							
09-Jul-2020	Thursday		0							
10-Jul-2020	Friday	choppy	3		1					
11-Jul-2020	Saturday	choppy	10		2			22	1236	46
12-Jul-2020	Sunday	choppy	22		2			64	1254	135
13-Jul-2020	Monday	choppy	4							
14-Jul-2020	Tuesday	choppy	7		1			7	1211	20
15-Jul-2020	Wednesday	choppy	24	12	1			56	1205	157
16-Jul-2020	Thursday		2	6						
17-Jul-2020	Friday	choppy	4	1						
18-Jul-2020	Saturday	choppy	4					40	1229	84
19-Jul-2020	Sunday		1	3						
20-Jul-2020	Monday		0							
21-Jul-2020	Tuesday	choppy	16	5	5			66	1205	188
22-Jul-2020	Wednesday	choppy	13	6						
23-Jul-2020	Thursday	choppy	2	3	1					
24-Jul-2020	Friday		4	7	1					
25-Jul-2020	Saturday	calm/rippled	25	3	3			68	1156	151
26-Jul-2020	Sunday	choppy	19	2	1					
27-Jul-2020	Monday	choppy	3							
28-Jul-2020	Tuesday	choppy	13	7	7			54	1232	153
29-Jul-2020	Wednesday	calm/rippled	5	1						
30-Jul-2020	Thursday	calm/rippled	6	2						
31-Jul-2020	Friday	calm/rippled	25	2	2			49	1154	134
01-Aug-2020	Saturday		5	9				99	1140	225
02-Aug-2020	Sunday	choppy	9	4	1					
03-Aug-2020	Monday (B.C. Day)		1	3						
	Totals	choppy	147	52	19			38*		106*
	Totals	choppy	99	8	9			49*		103*

* Average number of boats Observed and Expanded

Table 3: Simple area based cpue (catch per boat trip) expansion.

Day Type	Average Expanded Boats	Number of Days	Total Estimated Effort	CPUE				Retained			
				Chinook	Coho	Sockeye	Halibut	Chinook	Coho	Sockeye	Halibut
Midweek	106	22	2332	0.3540	0.1290			826	301		
Weekend	103	9	927	0.0810	0.0910			75	84		

Table 4: Recent years estimates of retained catch and effort.

Year	Month	Total Effort	Chinook Kept	Coho Kept	Sockeye Kept	Halibut Kept
2015	July	2341	462			
2016	July	2340	452	548		
2017	July	2934	517	404		
2018	July	2876	842	666		
2019	July	2561	862	301		0
2020	July	3026	612	437		0
5-Yr Avg	July	2610	627	480		0

Table 5: Sport Head Recovery Review.

Species	Creel Marked Catch	Creel Mark Rate	Creel Submission Rate	iRec Marked Catch	iRec Mark Rate	iRec Submission Rate	Sport Head Recoveries
---------	--------------------	-----------------	-----------------------	-------------------	----------------	----------------------	-----------------------

Table 6: Guided Proprtions Review.

Data Source	Interviews / Angler Days	Guided Proportion
Creel Interivews	240	3%
iRec Anglers	5502	7%

Figure 1: Proportion of each day's fishing by hour.

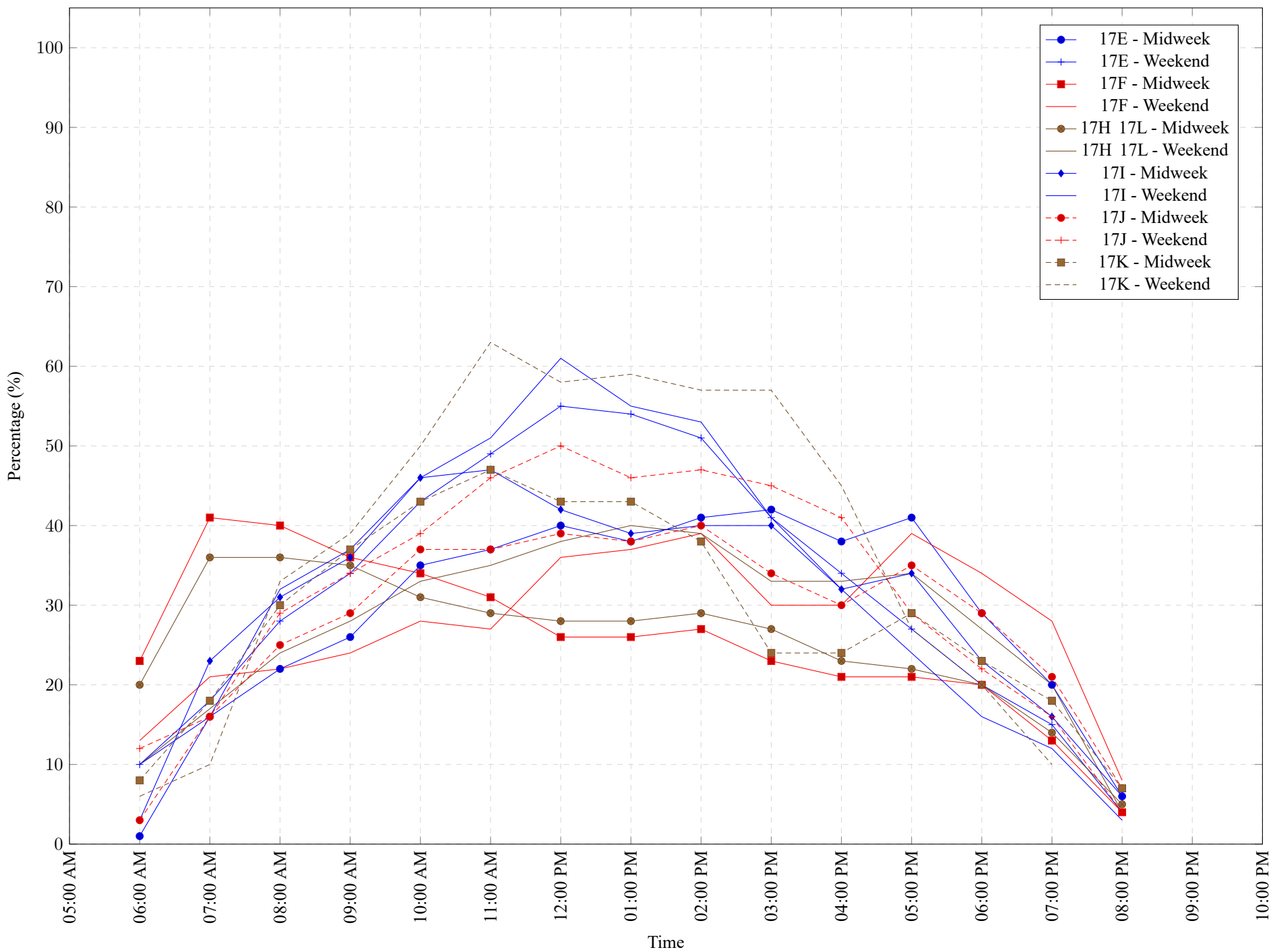


Table 7: Proportion of each day's fishing by hour.

Areas	Day Type	6:00 AM	7:00 AM	8:00 AM	9:00 AM	10:00 AM	11:00 AM	12:00 PM	01:00 PM	02:00 PM	03:00 PM	04:00 PM	05:00 PM	06:00 PM	07:00 PM	08:00 PM	09:00 PM	10:00 PM
17E	Midweek	1%	16%	22%	26%	35%	37%	40%	38%	41%	42%	38%	41%	29%	20%	6%	0%	0%
17E	Weekend	10%	18%	28%	34%	43%	49%	55%	54%	51%	41%	34%	27%	20%	15%	4%	0%	0%
17F	Midweek	23%	41%	40%	36%	34%	31%	26%	26%	27%	23%	21%	21%	20%	13%	4%	0%	0%
17F	Weekend	13%	21%	22%	24%	28%	27%	36%	37%	39%	30%	30%	39%	34%	28%	8%	0%	0%
17H 17L	Midweek	20%	36%	36%	35%	31%	29%	28%	28%	29%	27%	23%	22%	20%	14%	5%	0%	0%
17H 17L	Weekend	10%	17%	24%	28%	33%	35%	38%	40%	39%	33%	33%	34%	27%	20%	4%	0%	0%
17I	Midweek	3%	23%	31%	36%	46%	47%	42%	39%	40%	40%	32%	34%	23%	16%	6%	0%	0%
17I	Weekend	10%	16%	32%	37%	46%	51%	61%	55%	53%	41%	32%	24%	16%	12%	3%	0%	0%
17J	Midweek	3%	16%	25%	29%	37%	37%	39%	38%	40%	34%	30%	35%	29%	21%	7%	0%	0%
17J	Weekend	12%	16%	29%	34%	39%	46%	50%	46%	47%	45%	41%	29%	22%	16%	4%	0%	0%
17K	Midweek	8%	18%	30%	37%	43%	47%	43%	43%	38%	24%	24%	29%	23%	18%	7%	0%	0%
17K	Weekend	6%	10%	33%	39%	50%	63%	58%	59%	57%	57%	45%	27%	20%	10%	0%	0%	0%

Table 8: Daily Fishing Conditions.

Date	Day Type	Brechin	Cowichan Bay	Crofton Ramp	Ladysmith	McDonald Beach	Planetarium	Schooner				
28 Jun 2020	Weekend	choppy		calm/rippled								
29 Jun 2020	Midweek											
30 Jun 2020	Midweek			calm/rippled								
01 Jul 2020	Weekend							choppy				
02 Jul 2020	Midweek											
03 Jul 2020	Midweek	calm/rippled					choppy	calm/rippled				
04 Jul 2020	Weekend				calm/rippled							
05 Jul 2020	Weekend											
06 Jul 2020	Midweek	calm/rippled		calm/rippled	choppy							
07 Jul 2020	Midweek											
08 Jul 2020	Midweek											
09 Jul 2020	Midweek							choppy				
10 Jul 2020	Midweek					choppy						
11 Jul 2020	Weekend	choppy										
12 Jul 2020	Weekend				choppy							
13 Jul 2020	Midweek							choppy				
14 Jul 2020	Midweek					choppy						
15 Jul 2020	Midweek	choppy			calm/rippled							
16 Jul 2020	Midweek											
17 Jul 2020	Midweek				choppy							
18 Jul 2020	Weekend							choppy				
19 Jul 2020	Weekend											
20 Jul 2020	Midweek											
21 Jul 2020	Midweek				calm/rippled			frequent whitecaps				
22 Jul 2020	Midweek					choppy						
23 Jul 2020	Midweek						choppy					
24 Jul 2020	Midweek											
25 Jul 2020	Weekend	choppy	choppy			calm/rippled	choppy					
26 Jul 2020	Weekend						choppy					
27 Jul 2020	Midweek					choppy						
28 Jul 2020	Midweek	choppy										
29 Jul 2020	Midweek				calm/rippled							
30 Jul 2020	Midweek					calm/rippled						
31 Jul 2020	Midweek	calm/rippled						choppy				
01 Aug 2020	Weekend											
02 Aug 2020	Weekend						choppy					
03 Aug 2020	Weekend											