



Table 1: Numbers of Interviews conducted contributing to the area by day and access site.

Date	Day Type	Cowichan Bay		Crofton Ramp		Mill Bay		Sidney
		AM	PM	AM	PM	AM	PM	PM
28 Jun 2020	Weekend		8		6	2		1
29 Jun 2020	Midweek	6						
30 Jun 2020	Midweek			3				
01 Jul 2020	Weekend					3		
02 Jul 2020	Midweek							
03 Jul 2020	Midweek							
04 Jul 2020	Weekend							
05 Jul 2020	Weekend	6						
06 Jul 2020	Midweek							
07 Jul 2020	Midweek	2						
08 Jul 2020	Midweek							
09 Jul 2020	Midweek							
10 Jul 2020	Midweek							
11 Jul 2020	Weekend							
12 Jul 2020	Weekend							
13 Jul 2020	Midweek		6					
14 Jul 2020	Midweek							
15 Jul 2020	Midweek							
16 Jul 2020	Midweek							
17 Jul 2020	Midweek							
18 Jul 2020	Weekend							
19 Jul 2020	Weekend							2
20 Jul 2020	Midweek		4					
21 Jul 2020	Midweek							
22 Jul 2020	Midweek							1
23 Jul 2020	Midweek							
24 Jul 2020	Midweek							
25 Jul 2020	Weekend		5				2	
26 Jul 2020	Weekend							
27 Jul 2020	Midweek							
28 Jul 2020	Midweek							
29 Jul 2020	Midweek							
30 Jul 2020	Midweek							
31 Jul 2020	Midweek							
01 Aug 2020	Weekend							
02 Aug 2020	Weekend		8					
03 Aug 2020	Weekend							

Table 2: Daily tally of interviews, catch and effort.

Date	Day	Average Fishing Conditions	Interviews & Log Trips	Chinook	Coho	Sockeye	Halibut	Observed Fishing	Flight Time	Expanded Fishing
28-Jun-2020	Sunday	choppy	18							
29-Jun-2020	Monday	choppy	6					16	1140	41
30-Jun-2020	Tuesday	calm/rippled	3					10	1157	28
01-Jul-2020	Wednesday (Canada Day)	choppy	3					12	1149	24
02-Jul-2020	Thursday		0							
03-Jul-2020	Friday		1		1					
04-Jul-2020	Saturday		1					41	1140	84
05-Jul-2020	Sunday	calm/rippled	6							
06-Jul-2020	Monday		0					14	1139	36
07-Jul-2020	Tuesday	calm/rippled	2					11	1143	29
08-Jul-2020	Wednesday		0							
09-Jul-2020	Thursday		0							
10-Jul-2020	Friday		1							
11-Jul-2020	Saturday		0					18	1147	34
12-Jul-2020	Sunday		0					33	1156	65
13-Jul-2020	Monday	choppy	6							
14-Jul-2020	Tuesday		0					11	1124	29
15-Jul-2020	Wednesday		0					9	1117	24
16-Jul-2020	Thursday		1	1						
17-Jul-2020	Friday		0							
18-Jul-2020	Saturday		0					16	1124	32
19-Jul-2020	Sunday	calm/rippled	2							
20-Jul-2020	Monday	choppy	4							
21-Jul-2020	Tuesday		0					10	1118	26
22-Jul-2020	Wednesday	choppy	1							
23-Jul-2020	Thursday		0							
24-Jul-2020	Friday		0							
25-Jul-2020	Saturday	choppy	7					22	1102	47
26-Jul-2020	Sunday		0							
27-Jul-2020	Monday		0							
28-Jul-2020	Tuesday		0					8	1146	22
29-Jul-2020	Wednesday		0							
30-Jul-2020	Thursday		0							
31-Jul-2020	Friday		0					4	1103	10
01-Aug-2020	Saturday		0					46	1046	104
02-Aug-2020	Sunday	choppy	8	1						
03-Aug-2020	Monday (B.C. Day)		1		1					
	Totals	choppy	16	1	1			10*		25*
	Totals	choppy	19					24*		48*

* Average number of boats Observed and Expanded

Table 3: Simple area based cpue (catch per boat trip) expansion.

Day Type	Average Expanded Boats	Number of Days	Total Estimated Effort	CPUE				Retained			
				Chinook	Coho	Sockeye	Halibut	Chinook	Coho	Sockeye	Halibut
Weekend	48	9	432								
Midweek	25	22	550	0.0630	0.0630			35	35		

Table 4: Recent years estimates of retained catch and effort.

Year	Month	Total Effort	Chinook Kept	Coho Kept	Sockeye Kept	Halibut Kept
2015	July	3232	593			
2016	July	2019	98	26		
2017	July	1870	280			
2018	July	1055	124	12		
2019	July	358	0			0
2020	July	1239	0	0		0
5-Yr Avg	July	1707	219	19		0

Table 5: Sport Head Recovery Review.

Species	Creel Marked Catch	Creel Mark Rate	Creel Submission Rate	iRec Marked Catch	iRec Mark Rate	iRec Submission Rate	Sport Head Recoveries
---------	--------------------	-----------------	-----------------------	-------------------	----------------	----------------------	-----------------------

Table 6: Guided Proprtions Review.

Data Source	Interviews / Angler Days	Guided Proportion
Creel Interivews	31	0%
iRec Anglers	2490	4%

Figure 1: Proportion of each day's fishing by hour.

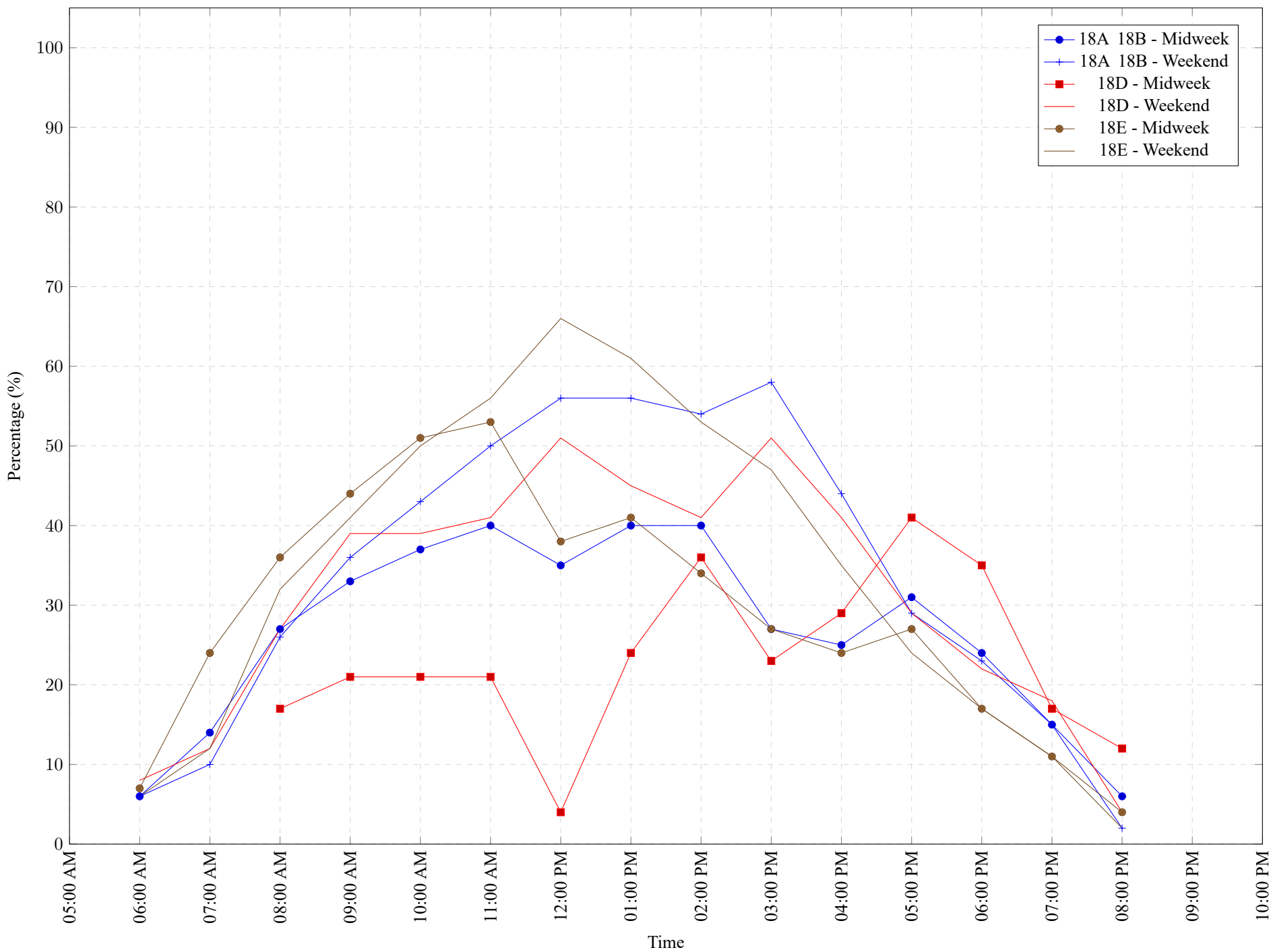


Table 7: Proportion of each day's fishing by hour.

Areas	Day Type	6:00 AM	7:00 AM	8:00 AM	9:00 AM	10:00 AM	11:00 AM	12:00 PM	01:00 PM	02:00 PM	03:00 PM	04:00 PM	05:00 PM	06:00 PM	07:00 PM	08:00 PM	09:00 PM	10:00 PM
18A 18B	Midweek	6%	14%	27%	33%	37%	40%	35%	40%	40%	27%	25%	31%	24%	15%	6%	0%	0%
18A 18B	Weekend	6%	10%	26%	36%	43%	50%	56%	56%	54%	58%	44%	29%	23%	15%	2%	0%	0%
18D	Midweek	0%	0%	17%	21%	21%	21%	4%	24%	36%	23%	29%	41%	35%	17%	12%	0%	0%
18D	Weekend	8%	12%	27%	39%	39%	41%	51%	45%	41%	51%	41%	29%	22%	18%	4%	0%	0%
18E	Midweek	7%	24%	36%	44%	51%	53%	38%	41%	34%	27%	24%	27%	17%	11%	4%	0%	0%
18E	Weekend	6%	12%	32%	41%	50%	56%	66%	61%	53%	47%	35%	24%	17%	11%	2%	0%	0%

Table 8: Daily Fishing Conditions.

Date	Day Type	Cowichan Bay	Crofton Ramp	Mill Bay	Sidney
28 Jun 2020	Weekend	frequent whitecaps choppy	calm/rippled	calm/rippled	calm/rippled
29 Jun 2020	Midweek		calm/rippled	choppy	
30 Jun 2020	Midweek				
01 Jul 2020	Weekend				
02 Jul 2020	Midweek				
03 Jul 2020	Midweek				
04 Jul 2020	Weekend	calm/rippled			
05 Jul 2020	Weekend				
06 Jul 2020	Midweek				
07 Jul 2020	Midweek	calm/rippled			
08 Jul 2020	Midweek				
09 Jul 2020	Midweek				
10 Jul 2020	Midweek				
11 Jul 2020	Weekend	choppy			
12 Jul 2020	Weekend				
13 Jul 2020	Midweek				
14 Jul 2020	Midweek				
15 Jul 2020	Midweek				
16 Jul 2020	Midweek				
17 Jul 2020	Midweek				
18 Jul 2020	Weekend	calm/rippled			
19 Jul 2020	Weekend				
20 Jul 2020	Midweek		choppy		
21 Jul 2020	Midweek				
22 Jul 2020	Midweek				
23 Jul 2020	Midweek	choppy			
24 Jul 2020	Midweek				
25 Jul 2020	Weekend		choppy		
26 Jul 2020	Weekend				
27 Jul 2020	Midweek				
28 Jul 2020	Midweek				
29 Jul 2020	Midweek				
30 Jul 2020	Midweek				
31 Jul 2020	Midweek				
01 Aug 2020	Weekend	choppy			
02 Aug 2020	Weekend				
03 Aug 2020	Weekend				