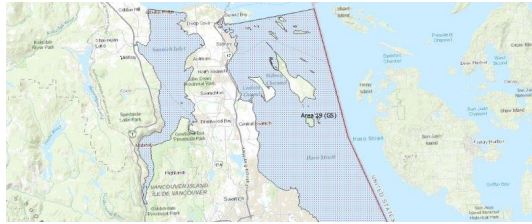


FISHERIES AND OCEANS CANADA

SOUTH COAST ASSESSMENT BULLETIN

CREEL SURVEY DATA REVIEW PACKAGE

Area 19 (GS) July 2020



Prepared By:
South Coast Salmon Stock Assessment Section

Tuesday 2nd February, 2021



Fisheries and Oceans
Canada

Pêches et Océans
Canada



Table 1: Numbers of Interviews conducted contributing to the area by day and access site.

Date	Day Type	Cattle Point	Cowichan Bay		Crofton Ramp	Mill Bay		Sidney	
		PM	AM	PM	PM	AM	PM	AM	PM
28 Jun 2020	Weekend			3	1	4			11
29 Jun 2020	Midweek								
30 Jun 2020	Midweek								
01 Jul 2020	Weekend					7			
02 Jul 2020	Midweek								
03 Jul 2020	Midweek							1	
04 Jul 2020	Weekend								
05 Jul 2020	Weekend		1						
06 Jul 2020	Midweek								
07 Jul 2020	Midweek								
08 Jul 2020	Midweek								
09 Jul 2020	Midweek								1
10 Jul 2020	Midweek					1			7
11 Jul 2020	Weekend								
12 Jul 2020	Weekend								
13 Jul 2020	Midweek								
14 Jul 2020	Midweek								
15 Jul 2020	Midweek	1							
16 Jul 2020	Midweek			1					
17 Jul 2020	Midweek								
18 Jul 2020	Weekend							3	
19 Jul 2020	Weekend	1							19
20 Jul 2020	Midweek								
21 Jul 2020	Midweek							1	
22 Jul 2020	Midweek								
23 Jul 2020	Midweek								
24 Jul 2020	Midweek						4		
25 Jul 2020	Weekend					3			
26 Jul 2020	Weekend								
27 Jul 2020	Midweek								
28 Jul 2020	Midweek								
29 Jul 2020	Midweek								
30 Jul 2020	Midweek								
31 Jul 2020	Midweek								
01 Aug 2020	Weekend								
02 Aug 2020	Weekend			4					
03 Aug 2020	Weekend								

Table 2: Daily tally of interviews, catch and effort.

Date	Day	Average Fishing Conditions	Interviews & Log Trips	Chinook	Coho	Sockeye	Halibut	Observed Fishing	Flight Time	Expanded Fishing
28-Jun-2020	Sunday	calm/rippled	19							
29-Jun-2020	Monday		0					6	1040	17
30-Jun-2020	Tuesday		0					1	1050	3
01-Jul-2020	Wednesday (Canada Day)	choppy	7					7	1043	13
02-Jul-2020	Thursday		0							
03-Jul-2020	Friday	calm/rippled	1							
04-Jul-2020	Saturday		0					13	1035	23
05-Jul-2020	Sunday	calm/rippled	1							
06-Jul-2020	Monday		0					2	1036	6
07-Jul-2020	Tuesday		0					0	1042	0
08-Jul-2020	Wednesday		0							
09-Jul-2020	Thursday	choppy	1							
10-Jul-2020	Friday	choppy	8							
11-Jul-2020	Saturday		0					15	1042	27
12-Jul-2020	Sunday		0					30	1046	53
13-Jul-2020	Monday		0							
14-Jul-2020	Tuesday		0					8	1029	22
15-Jul-2020	Wednesday	choppy	1					4	1028	11
16-Jul-2020	Thursday	choppy	1							
17-Jul-2020	Friday		0							
18-Jul-2020	Saturday	calm/rippled	3					12	1030	22
19-Jul-2020	Sunday	calm/rippled	20							
20-Jul-2020	Monday		0							
21-Jul-2020	Tuesday	calm/rippled	1					1	1029	3
22-Jul-2020	Wednesday		0							
23-Jul-2020	Thursday		0							
24-Jul-2020	Friday	calm/rippled	4							
25-Jul-2020	Saturday	choppy	3					8	1018	15
26-Jul-2020	Sunday		0							
27-Jul-2020	Monday		0							
28-Jul-2020	Tuesday		0					3	1041	9
29-Jul-2020	Wednesday		0							
30-Jul-2020	Thursday		0							
31-Jul-2020	Friday		0					4	1020	11
01-Aug-2020	Saturday		0					14	0938	27
02-Aug-2020	Sunday	choppy	4							
03-Aug-2020	Monday (B.C. Day)		0							
	Totals	choppy	17					3*		9*
	Totals	calm/rippled	34					14*		26*

* Average number of boats Observed and Expanded

Table 3: Simple area based cpue (catch per boat trip) expansion.

Day Type	Average Expanded Boats	Number of Days	Total Estimated Effort	CPUE				Retained			
				Chinook	Coho	Sockeye	Halibut	Chinook	Coho	Sockeye	Halibut
Weekend	26	9	234								
Midweek	9	22	198								

Table 4: Recent years estimates of retained catch and effort.

Year	Month	Total Effort	Chinook Kept	Coho Kept	Sockeye Kept	Halibut Kept
2015	July	467	23			
2016	July	265	16			
2017	July	826	204			
2018	July	664	105	2		
2019	July	348	0			0
2020	July	445	0			0
5-Yr Avg	July	514	70	2		0

Table 5: Sport Head Recovery Review.

Species	Creel Marked Catch	Creel Mark Rate	Creel Submission Rate	iRec Marked Catch	iRec Mark Rate	iRec Submission Rate	Sport Head Recoveries
---------	--------------------	-----------------	-----------------------	-------------------	----------------	----------------------	-----------------------

Table 6: Guided Proprtions Review.

Data Source	Interviews / Angler Days	Guided Proportion
Creel Interivews	51	2%
iRec Anglers	356	4%

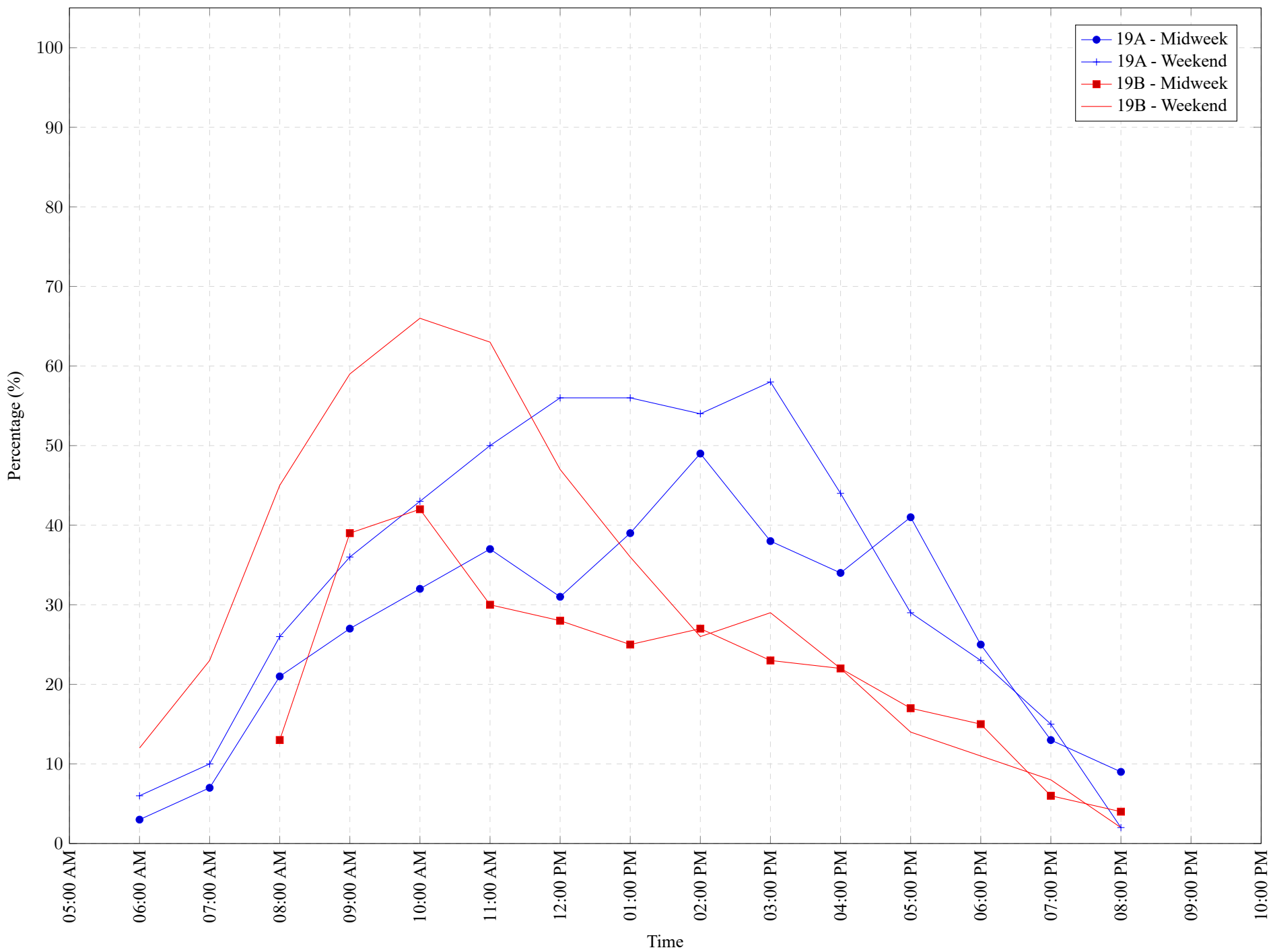
Figure 1: Proportion of each day's fishing by hour.

Table 7: Proportion of each day's fishing by hour.

Areas	Day Type	6:00 AM	7:00 AM	8:00 AM	9:00 AM	10:00 AM	11:00 AM	12:00 PM	01:00 PM	02:00 PM	03:00 PM	04:00 PM	05:00 PM	06:00 PM	07:00 PM	08:00 PM	09:00 PM	10:00 PM
19A	Midweek	3%	7%	21%	27%	32%	37%	31%	39%	49%	38%	34%	41%	25%	13%	9%	0%	0%
19A	Weekend	6%	10%	26%	36%	43%	50%	56%	56%	54%	58%	44%	29%	23%	15%	2%	0%	0%
19B	Midweek	0%	0%	13%	39%	42%	30%	28%	25%	27%	23%	22%	17%	15%	6%	4%	0%	0%
19B	Weekend	12%	23%	45%	59%	66%	63%	47%	36%	26%	29%	22%	14%	11%	8%	2%	0%	0%

Table 8: Daily Fishing Conditions.

Date	Day Type	Cattle Point	Cowichan Bay	Crofton Ramp	Mill Bay	Sidney
28 Jun 2020	Weekend		frequent whitecaps	calm/rippled	calm/rippled	calm/rippled
29 Jun 2020	Midweek					
30 Jun 2020	Midweek					
01 Jul 2020	Weekend				choppy	
02 Jul 2020	Midweek					
03 Jul 2020	Midweek					calm/rippled
04 Jul 2020	Weekend					
05 Jul 2020	Weekend		calm/rippled			
06 Jul 2020	Midweek					
07 Jul 2020	Midweek					
08 Jul 2020	Midweek					
09 Jul 2020	Midweek					choppy
10 Jul 2020	Midweek				choppy	choppy
11 Jul 2020	Weekend					
12 Jul 2020	Weekend					
13 Jul 2020	Midweek					
14 Jul 2020	Midweek					
15 Jul 2020	Midweek	choppy				
16 Jul 2020	Midweek		choppy			
17 Jul 2020	Midweek					
18 Jul 2020	Weekend					calm/rippled
19 Jul 2020	Weekend	calm/rippled				calm/rippled
20 Jul 2020	Midweek					
21 Jul 2020	Midweek					calm/rippled
22 Jul 2020	Midweek					
23 Jul 2020	Midweek					
24 Jul 2020	Midweek				calm/rippled	
25 Jul 2020	Weekend				choppy	
26 Jul 2020	Weekend					
27 Jul 2020	Midweek					
28 Jul 2020	Midweek					
29 Jul 2020	Midweek					
30 Jul 2020	Midweek					
31 Jul 2020	Midweek					
01 Aug 2020	Weekend					
02 Aug 2020	Weekend		choppy			
03 Aug 2020	Weekend					