

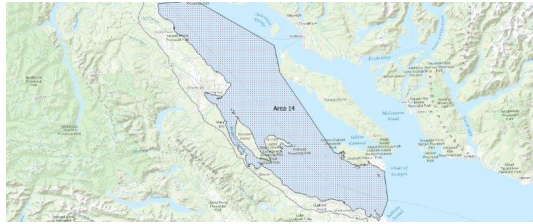
# FISHERIES AND OCEANS CANADA

## SOUTH COAST ASSESSMENT BULLETIN

### CREEL SURVEY DATA REVIEW PACKAGE

---

## Area 14 August 2020



---

*Prepared By:*  
South Coast Salmon Stock Assessment Section

Wednesday 3<sup>rd</sup> February, 2021



Fisheries and Oceans  
Canada

Pêches et Océans  
Canada



Table 1: Numbers of Interviews conducted contributing to the area by day and access site.

		Comox Mun		Cooper's Green	French Ck		Kitty Coleman		Lund	Pacific Play		Pender Harbour Resort	Schooner
Date	Day Type	AM	PM	AM	AM	PM	AM	PM	PM	AM	PM	PM	PM
29 Jul 2020	Midweek				37		8						
30 Jul 2020	Midweek							23					
31 Jul 2020	Midweek												
01 Aug 2020	Weekend				23			11	1				
02 Aug 2020	Weekend												
03 Aug 2020	Weekend												
04 Aug 2020	Midweek						2						
05 Aug 2020	Midweek										10		
06 Aug 2020	Midweek	2											
07 Aug 2020	Midweek				31								
08 Aug 2020	Weekend												
09 Aug 2020	Weekend		27	1									
10 Aug 2020	Midweek												
11 Aug 2020	Midweek												
12 Aug 2020	Midweek											1	
13 Aug 2020	Midweek				19								
14 Aug 2020	Midweek												
15 Aug 2020	Weekend												
16 Aug 2020	Weekend												
17 Aug 2020	Midweek												
18 Aug 2020	Midweek									7			
19 Aug 2020	Midweek	11									2		
20 Aug 2020	Midweek												
21 Aug 2020	Midweek												
22 Aug 2020	Weekend	10				32							
23 Aug 2020	Weekend							2					
24 Aug 2020	Midweek												
25 Aug 2020	Midweek												
26 Aug 2020	Midweek							15					
27 Aug 2020	Midweek		35										
28 Aug 2020	Midweek					36							
29 Aug 2020	Weekend												
30 Aug 2020	Weekend									5			
31 Aug 2020	Midweek					32							
01 Sep 2020	Midweek												2
02 Sep 2020	Midweek		22										
03 Sep 2020	Midweek	14								1			

Table 2: Daily tally of interviews, catch and effort.

Date	Day	Average Fishing Conditions	Interviews & Log Trips	Chinook	Coho	Sockeye	Halibut	Observed Fishing	Flight Time	Expanded Fishing
29-Jul-2020	Wednesday	choppy	47	46	21					
30-Jul-2020	Thursday	calm/rippled	24	17	3					
31-Jul-2020	Friday		1	5						
01-Aug-2020	Saturday	choppy	37	36	23			142	1017	415
02-Aug-2020	Sunday		1	5						
03-Aug-2020	Monday (B.C. Day)		2	6						
04-Aug-2020	Tuesday	calm/rippled	4	10						
05-Aug-2020	Wednesday	frequent whitecaps	11	6				55	1016	187
06-Aug-2020	Thursday	choppy	3	4						
07-Aug-2020	Friday	choppy	32	23	3					
08-Aug-2020	Saturday		1	4						
09-Aug-2020	Sunday	choppy	31	19				66	1009	194
10-Aug-2020	Monday		0							
11-Aug-2020	Tuesday		2	6	1			36	1015	121
12-Aug-2020	Wednesday	calm/rippled	4	14	1					
13-Aug-2020	Thursday	choppy	20	11	7					
14-Aug-2020	Friday		3	9						
15-Aug-2020	Saturday		2	12				166	1011	482
16-Aug-2020	Sunday		2	8						
17-Aug-2020	Monday		1	4						
18-Aug-2020	Tuesday	calm/rippled	8	5						
19-Aug-2020	Wednesday	choppy	14	13	1					
20-Aug-2020	Thursday		0					1	1016	3
21-Aug-2020	Friday		0							
22-Aug-2020	Saturday	choppy	43	30	4			190	1020	554
23-Aug-2020	Sunday	choppy	5	11						
24-Aug-2020	Monday		1	5	1					
25-Aug-2020	Tuesday		3	4						
26-Aug-2020	Wednesday	calm/rippled	16	17	1					
27-Aug-2020	Thursday	choppy	37	27	2			59	1006	199
28-Aug-2020	Friday	choppy	39	22	4			150	1013	506
29-Aug-2020	Saturday		1					10	1007	30
30-Aug-2020	Sunday	calm/rippled	7	12	1					
31-Aug-2020	Monday	calm/rippled	34	29	5					
01-Sep-2020	Tuesday	calm/rippled	4	2				122	1228	445
02-Sep-2020	Wednesday	choppy	23	13						
03-Sep-2020	Thursday	calm/rippled	17	16	1					
	Totals	choppy	232	209	26			60*		203*
	Totals	choppy	132	143	28			115*		335*

\* Average number of boats Observed and Expanded

**Table 3: Simple area based cpue (catch per boat trip) expansion.**

Day Type	Average Expanded Boats	Number of Days	Total Estimated Effort	CPUE				Retained			
				Chinook	Coho	Sockeye	Halibut	Chinook	Coho	Sockeye	Halibut
Weekend	335	11	3685	1.0830	0.2120			3991	781		
Midweek	203	20	4060	0.9010	0.1120			3658	455		

**Table 4: Recent years estimates of retained catch and effort.**

Year	Month	Total Effort	Chinook Kept	Coho Kept	Sockeye Kept	Halibut Kept
2015	August	7246	971	300		
2016	August	3084	1032	1119		
2017	August	6440	3663	1210	5	
2018	August	6968	2670	2337	89	48
2019	August	7607	3651	569		0
2020	August	8431	5075	965		3
5-Yr Avg	August	6269	2397	1107	47	24

**Table 5: Sport Head Recovery Review.**

Species	Creel Marked Catch	Creel Mark Rate	Creel Submission Rate	iRec Marked Catch	iRec Mark Rate	iRec Submission Rate	Sport Head Recoveries
---------	--------------------	-----------------	-----------------------	-------------------	----------------	----------------------	-----------------------

**Table 6: Guided Proprtions Review.**

Data Source	Interviews / Angler Days	Guided Proportion
Creel Interivews	365	2%
iRec Anglers	11249	9%

Figure 1: Proportion of each day's fishing by hour.

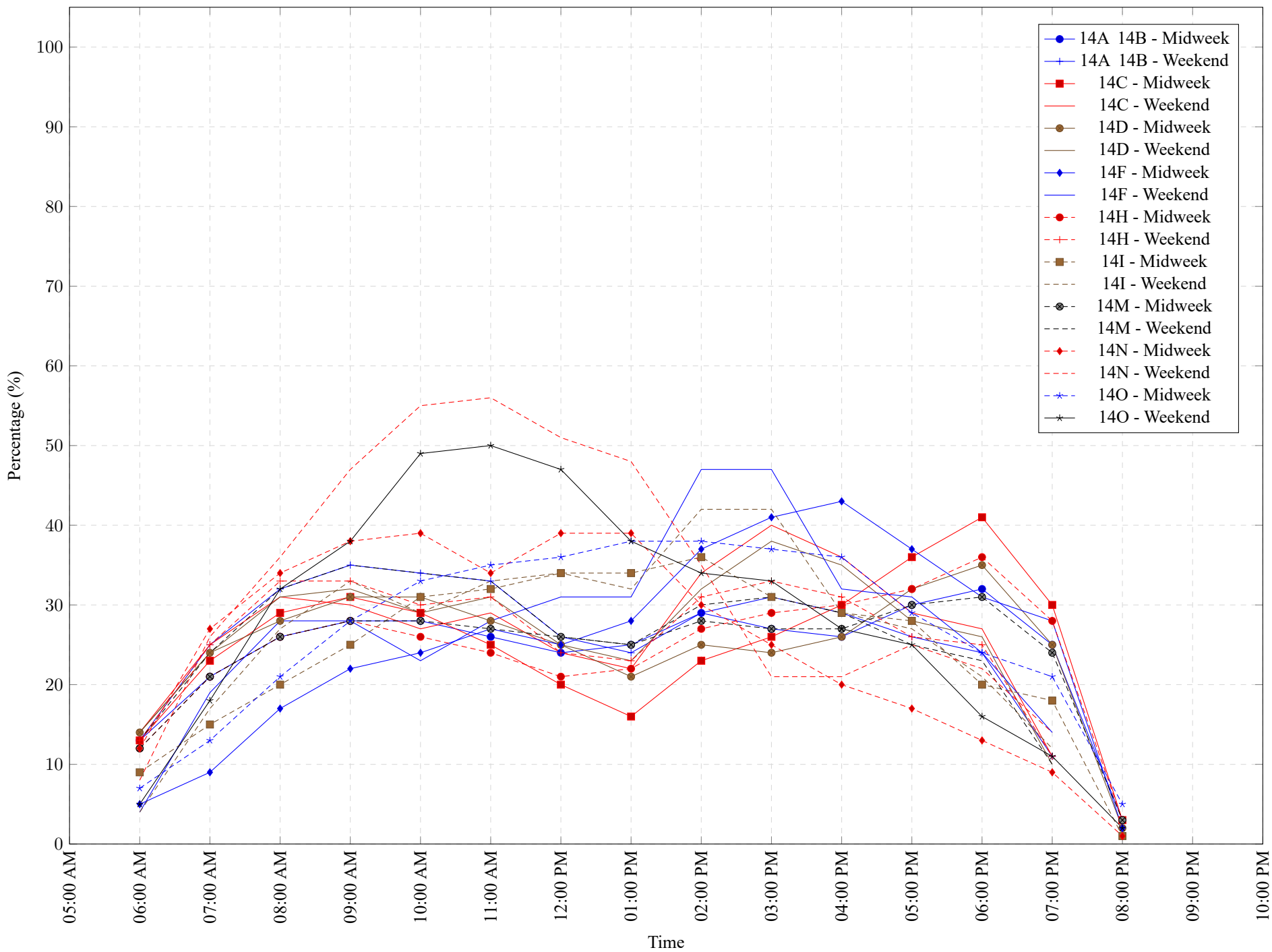


Table 7: Proportion of each day's fishing by hour.

Areas		Day Type	6:00 AM	7:00 AM	8:00 AM	9:00 AM	10:00 AM	11:00 AM	12:00 PM	01:00 PM	02:00 PM	03:00 PM	04:00 PM	05:00 PM	06:00 PM	07:00 PM	08:00 PM	09:00 PM	10:00 PM
14A	14B	Midweek	13%	21%	26%	28%	28%	26%	24%	25%	29%	27%	26%	30%	32%	25%	3%	0%	0%
14A	14B	Weekend	13%	25%	32%	35%	34%	33%	26%	24%	29%	31%	29%	26%	24%	11%	0%	0%	0%
14C		Midweek	13%	23%	29%	31%	29%	25%	20%	16%	23%	26%	30%	36%	41%	30%	3%	0%	0%
14C		Weekend	14%	25%	31%	30%	27%	29%	24%	22%	34%	40%	36%	29%	27%	11%	0%	0%	0%
14D		Midweek	14%	24%	28%	31%	31%	28%	25%	21%	25%	24%	26%	32%	35%	25%	2%	0%	0%
14D		Weekend	14%	24%	31%	32%	29%	31%	25%	23%	32%	38%	35%	28%	26%	10%	0%	0%	0%
14F		Midweek	5%	9%	17%	22%	24%	27%	25%	28%	37%	41%	43%	37%	31%	28%	2%	0%	0%
14F		Weekend	4%	19%	28%	28%	23%	28%	31%	31%	47%	47%	32%	31%	24%	14%	0%	0%	0%
14H		Midweek	12%	21%	26%	28%	26%	24%	21%	22%	27%	29%	30%	32%	36%	28%	3%	0%	0%
14H		Weekend	13%	25%	33%	33%	30%	31%	24%	23%	31%	33%	31%	26%	25%	11%	0%	0%	0%
14I		Midweek	9%	15%	20%	25%	31%	32%	34%	34%	36%	31%	29%	28%	20%	18%	1%	0%	0%
14I		Weekend	4%	17%	27%	33%	29%	33%	34%	32%	42%	42%	29%	27%	21%	12%	0%	0%	0%
14M		Midweek	12%	21%	26%	28%	28%	27%	26%	25%	28%	27%	27%	30%	31%	24%	3%	0%	0%
14M		Weekend	13%	24%	32%	35%	34%	33%	26%	25%	30%	31%	29%	25%	23%	10%	0%	0%	0%
14N		Midweek	12%	27%	34%	38%	39%	34%	39%	39%	30%	25%	20%	17%	13%	9%	1%	0%	0%
14N		Weekend	8%	26%	36%	47%	55%	56%	51%	48%	35%	21%	21%	25%	22%	14%	0%	0%	0%
14O		Midweek	7%	13%	21%	28%	33%	35%	36%	38%	38%	37%	36%	29%	24%	21%	5%	0%	0%
14O		Weekend	5%	18%	32%	38%	49%	50%	47%	38%	34%	33%	27%	25%	16%	11%	2%	0%	0%

**Table 8: Daily Fishing Conditions.**

Date	Day Type	Comox Mun	Cooper's Green	French Ck	Kitty Coleman	Lund	Pacific Play	Pender Harbour Resort	Schooner
29 Jul 2020	Midweek			choppy	calm/rippled				
30 Jul 2020	Midweek				calm/rippled				
31 Jul 2020	Midweek								
01 Aug 2020	Weekend			choppy	choppy	choppy			
02 Aug 2020	Weekend								
03 Aug 2020	Weekend								
04 Aug 2020	Midweek				calm/rippled				
05 Aug 2020	Midweek						frequent whitecaps		
06 Aug 2020	Midweek	choppy							
07 Aug 2020	Midweek			choppy					
08 Aug 2020	Weekend								
09 Aug 2020	Weekend	choppy	calm/rippled						
10 Aug 2020	Midweek								
11 Aug 2020	Midweek								
12 Aug 2020	Midweek							calm/rippled	
13 Aug 2020	Midweek			choppy					
14 Aug 2020	Midweek								
15 Aug 2020	Weekend								
16 Aug 2020	Weekend								
17 Aug 2020	Midweek								
18 Aug 2020	Midweek						calm/rippled		
19 Aug 2020	Midweek	choppy					choppy		
20 Aug 2020	Midweek								
21 Aug 2020	Midweek								
22 Aug 2020	Weekend	calm/rippled		choppy					
23 Aug 2020	Weekend				choppy				
24 Aug 2020	Midweek								
25 Aug 2020	Midweek								
26 Aug 2020	Midweek				calm/rippled				
27 Aug 2020	Midweek	choppy							
28 Aug 2020	Midweek			choppy					
29 Aug 2020	Weekend								
30 Aug 2020	Weekend						calm/rippled		
31 Aug 2020	Midweek			calm/rippled					
01 Sep 2020	Midweek								calm/rippled
02 Sep 2020	Midweek	choppy							
03 Sep 2020	Midweek	calm/rippled					calm/rippled		