



Table 1: Numbers of Interviews conducted contributing to the area by day and access site.

Date	Day Type	Cattle Point	Cowichan Bay		Mill Bay	Sidney	
		PM	AM	PM	AM	AM	PM
29 Jul 2020	Midweek						
30 Jul 2020	Midweek						
31 Jul 2020	Midweek						
01 Aug 2020	Weekend						
02 Aug 2020	Weekend			8			
03 Aug 2020	Weekend						
04 Aug 2020	Midweek						6
05 Aug 2020	Midweek						
06 Aug 2020	Midweek						
07 Aug 2020	Midweek						
08 Aug 2020	Weekend						
09 Aug 2020	Weekend						1
10 Aug 2020	Midweek						
11 Aug 2020	Midweek	1					
12 Aug 2020	Midweek						
13 Aug 2020	Midweek						
14 Aug 2020	Midweek			1			
15 Aug 2020	Weekend		3				
16 Aug 2020	Weekend			8			
17 Aug 2020	Midweek	1				1	
18 Aug 2020	Midweek						
19 Aug 2020	Midweek			5			
20 Aug 2020	Midweek						
21 Aug 2020	Midweek						
22 Aug 2020	Weekend		3				
23 Aug 2020	Weekend						
24 Aug 2020	Midweek						
25 Aug 2020	Midweek			10	1		
26 Aug 2020	Midweek						
27 Aug 2020	Midweek						2
28 Aug 2020	Midweek		3				
29 Aug 2020	Weekend						
30 Aug 2020	Weekend						
31 Aug 2020	Midweek						
01 Sep 2020	Midweek						
02 Sep 2020	Midweek		1				
03 Sep 2020	Midweek			6			2

Table 2: Daily tally of interviews, catch and effort.

Date	Day	Average Fishing Conditions	Interviews & Log Trips	Chinook	Coho	Sockeye	Halibut	Observed Fishing	Flight Time	Expanded Fishing
29-Jul-2020	Wednesday		0							
30-Jul-2020	Thursday		0							
31-Jul-2020	Friday		0					4	1103	8
01-Aug-2020	Saturday		0					46	1046	123
02-Aug-2020	Sunday	choppy	8	1						
03-Aug-2020	Monday (B.C. Day)		1		1					
04-Aug-2020	Tuesday	calm/rippled	7							
05-Aug-2020	Wednesday		0					10	1014	20
06-Aug-2020	Thursday		0							
07-Aug-2020	Friday		0							
08-Aug-2020	Saturday		0							
09-Aug-2020	Sunday	calm/rippled	1					27	1052	72
10-Aug-2020	Monday		0							
11-Aug-2020	Tuesday	frequent whitecaps	1					12	1042	24
12-Aug-2020	Wednesday		0							
13-Aug-2020	Thursday		0							
14-Aug-2020	Friday	choppy	1							
15-Aug-2020	Saturday	calm/rippled	3					25	1047	68
16-Aug-2020	Sunday	choppy	8							
17-Aug-2020	Monday	choppy	2							
18-Aug-2020	Tuesday		0							
19-Aug-2020	Wednesday	choppy	5							
20-Aug-2020	Thursday		2		1			4	0938	16
21-Aug-2020	Friday		0							
22-Aug-2020	Saturday	choppy	3					43	1038	116
23-Aug-2020	Sunday		1							
24-Aug-2020	Monday		0							
25-Aug-2020	Tuesday	choppy	11							
26-Aug-2020	Wednesday		1							
27-Aug-2020	Thursday	calm/rippled	2					9	0959	34
28-Aug-2020	Friday	choppy	3					12	1016	24
29-Aug-2020	Saturday		0					19	1004	51
30-Aug-2020	Sunday		0							
31-Aug-2020	Monday		0							
01-Sep-2020	Tuesday		0							
02-Sep-2020	Wednesday	calm/rippled	1							
03-Sep-2020	Thursday	calm/rippled	8							
	Totals	choppy	35		1			9*		24*
	Totals	choppy	25	1	1			32*		86*

* Average number of boats Observed and Expanded

Table 3: Simple area based cpue (catch per boat trip) expansion.

Day Type	Average Expanded Boats	Number of Days	Total Estimated Effort	CPUE				Retained			
				Chinook	Coho	Sockeye	Halibut	Chinook	Coho	Sockeye	Halibut
Weekend	86	11	946	0.04	0.04			38	38		
Midweek	24	20	480		0.0290				14		

Table 4: Recent years estimates of retained catch and effort.

Year	Month	Total Effort	Chinook Kept	Coho Kept	Sockeye Kept	Halibut Kept
2015	August	4002	1149	49		
2016	August	1676	39			
2017	August	4773	752	118		
2018	August	1035	149	46		
2019	August	1079	319	1		0
2020	August	1174	81	2		0
5-Yr Avg	August	2513	482	54		0

Table 5: Sport Head Recovery Review.

Species	Creel Marked Catch	Creel Mark Rate	Creel Submission Rate	iRec Marked Catch	iRec Mark Rate	iRec Submission Rate	Sport Head Recoveries
---------	--------------------	-----------------	-----------------------	-------------------	----------------	----------------------	-----------------------

Table 6: Guided Proprtions Review.

Data Source	Interviews / Angler Days	Guided Proportion
Creel Interivews	58	0%
iRec Anglers	2304	8%

Figure 1: Proportion of each day's fishing by hour.

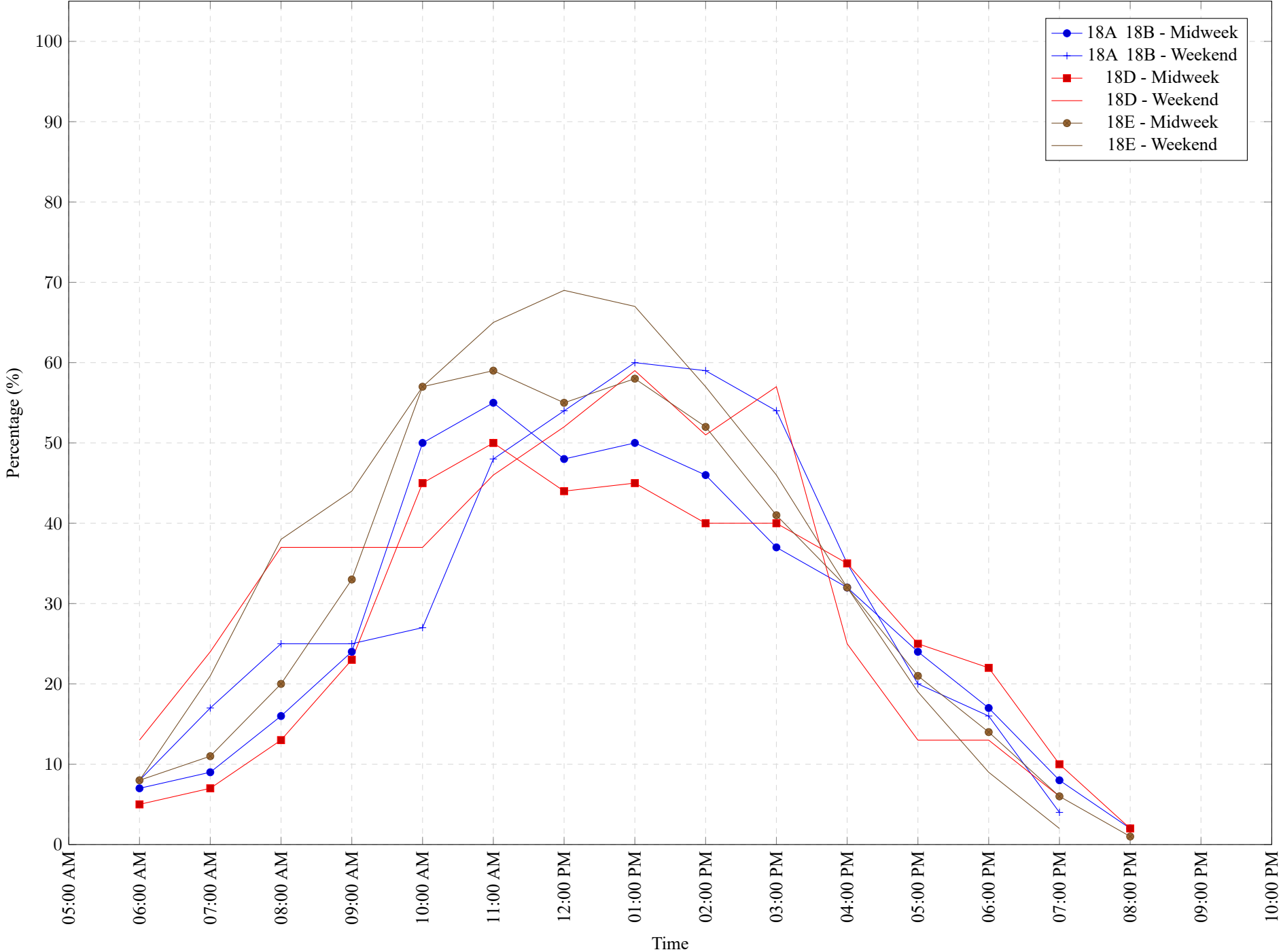


Table 7: Proportion of each day's fishing by hour.

Areas		Day Type	6:00 AM	7:00 AM	8:00 AM	9:00 AM	10:00 AM	11:00 AM	12:00 PM	01:00 PM	02:00 PM	03:00 PM	04:00 PM	05:00 PM	06:00 PM	07:00 PM	08:00 PM	09:00 PM	10:00 PM
18A 18B	Midweek		7%	9%	16%	24%	50%	55%	48%	50%	46%	37%	32%	24%	17%	8%	2%	0%	0%
18A 18B	Weekend		8%	17%	25%	25%	27%	48%	54%	60%	59%	54%	35%	20%	16%	4%	0%	0%	0%
18D	Midweek		5%	7%	13%	23%	45%	50%	44%	45%	40%	40%	35%	25%	22%	10%	2%	0%	0%
18D	Weekend		13%	24%	37%	37%	37%	46%	52%	59%	51%	57%	25%	13%	13%	6%	0%	0%	0%
18E	Midweek		8%	11%	20%	33%	57%	59%	55%	58%	52%	41%	32%	21%	14%	6%	1%	0%	0%
18E	Weekend		8%	21%	38%	44%	57%	65%	69%	67%	57%	46%	32%	19%	9%	2%	0%	0%	0%

Table 8: Daily Fishing Conditions.

Date	Day Type	Cattle Point	Cowichan Bay	Mill Bay	Sidney
29 Jul 2020	Midweek				
30 Jul 2020	Midweek				
31 Jul 2020	Midweek				
01 Aug 2020	Weekend				
02 Aug 2020	Weekend		choppy		
03 Aug 2020	Weekend				
04 Aug 2020	Midweek				calm/rippled
05 Aug 2020	Midweek				
06 Aug 2020	Midweek				
07 Aug 2020	Midweek				
08 Aug 2020	Weekend				
09 Aug 2020	Weekend				calm/rippled
10 Aug 2020	Midweek				
11 Aug 2020	Midweek	frequent whitecaps			
12 Aug 2020	Midweek				
13 Aug 2020	Midweek				
14 Aug 2020	Midweek		choppy		
15 Aug 2020	Weekend		calm/rippled		
16 Aug 2020	Weekend		choppy		
17 Aug 2020	Midweek	choppy			choppy
18 Aug 2020	Midweek				
19 Aug 2020	Midweek		choppy		
20 Aug 2020	Midweek				
21 Aug 2020	Midweek				
22 Aug 2020	Weekend		choppy		
23 Aug 2020	Weekend				
24 Aug 2020	Midweek				
25 Aug 2020	Midweek		choppy	calm/rippled	
26 Aug 2020	Midweek				
27 Aug 2020	Midweek				calm/rippled
28 Aug 2020	Midweek		choppy		
29 Aug 2020	Weekend				
30 Aug 2020	Weekend				
31 Aug 2020	Midweek				
01 Sep 2020	Midweek				
02 Sep 2020	Midweek		calm/rippled		
03 Sep 2020	Midweek		calm/rippled		calm/rippled