

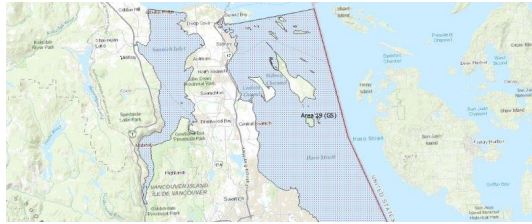
# FISHERIES AND OCEANS CANADA

## SOUTH COAST ASSESSMENT BULLETIN

### CREEL SURVEY DATA REVIEW PACKAGE

---

## Area 19 (GS) August 2020



---

*Prepared By:*  
South Coast Salmon Stock Assessment Section

Wednesday 3<sup>rd</sup> February, 2021



Fisheries and Oceans  
Canada

Pêches et Océans  
Canada



**Table 1: Numbers of Interviews conducted contributing to the area by day and access site.**

Date	Day Type	Cattle Point PM	Cowichan Bay		Mill Bay		Sidney	
			AM	PM	AM	PM	AM	PM
29 Jul 2020	Midweek							
30 Jul 2020	Midweek							
31 Jul 2020	Midweek							
01 Aug 2020	Weekend							
02 Aug 2020	Weekend			4				
03 Aug 2020	Weekend							
04 Aug 2020	Midweek							10
05 Aug 2020	Midweek							
06 Aug 2020	Midweek					1		
07 Aug 2020	Midweek							
08 Aug 2020	Weekend							
09 Aug 2020	Weekend	1				8		11
10 Aug 2020	Midweek							
11 Aug 2020	Midweek		1					
12 Aug 2020	Midweek						4	
13 Aug 2020	Midweek							
14 Aug 2020	Midweek							
15 Aug 2020	Weekend							
16 Aug 2020	Weekend			3				
17 Aug 2020	Midweek						4	
18 Aug 2020	Midweek		1					
19 Aug 2020	Midweek	3		1				
20 Aug 2020	Midweek							
21 Aug 2020	Midweek							
22 Aug 2020	Weekend		1					
23 Aug 2020	Weekend							
24 Aug 2020	Midweek							
25 Aug 2020	Midweek			3	3			
26 Aug 2020	Midweek							
27 Aug 2020	Midweek							15
28 Aug 2020	Midweek		1					
29 Aug 2020	Weekend						3	
30 Aug 2020	Weekend							
31 Aug 2020	Midweek							
01 Sep 2020	Midweek							
02 Sep 2020	Midweek							
03 Sep 2020	Midweek			2				7

Table 2: Daily tally of interviews, catch and effort.

Date	Day	Average Fishing Conditions	Interviews & Log Trips	Chinook	Coho	Sockeye	Halibut	Observed Fishing	Flight Time	Expanded Fishing
29-Jul-2020	Wednesday		0							
30-Jul-2020	Thursday		0							
31-Jul-2020	Friday		0					4	1020	9
01-Aug-2020	Saturday		0					14	0938	30
02-Aug-2020	Sunday	choppy	4							
03-Aug-2020	Monday (B.C. Day)		0							
04-Aug-2020	Tuesday	calm/rippled	10							
05-Aug-2020	Wednesday		0					2	0928	8
06-Aug-2020	Thursday	frequent whitecaps	1							
07-Aug-2020	Friday		0							
08-Aug-2020	Saturday		1		2					
09-Aug-2020	Sunday	calm/rippled	21	1				30	0938	64
10-Aug-2020	Monday		1	1						
11-Aug-2020	Tuesday	choppy	1					2	0941	5
12-Aug-2020	Wednesday	choppy	4							
13-Aug-2020	Thursday		0							
14-Aug-2020	Friday		0							
15-Aug-2020	Saturday		0					22	0942	47
16-Aug-2020	Sunday	choppy	3							
17-Aug-2020	Monday	choppy	5							
18-Aug-2020	Tuesday	choppy	1							
19-Aug-2020	Wednesday	calm/rippled	4							
20-Aug-2020	Thursday		0					2	0909	8
21-Aug-2020	Friday		1	2						
22-Aug-2020	Saturday	choppy	1					13	0937	28
23-Aug-2020	Sunday		1							
24-Aug-2020	Monday		0							
25-Aug-2020	Tuesday	calm/rippled	6							
26-Aug-2020	Wednesday		0							
27-Aug-2020	Thursday	calm/rippled	15					3	0901	12
28-Aug-2020	Friday	choppy	1					10	0925	39
29-Aug-2020	Saturday	choppy	3					0	0857	0
30-Aug-2020	Sunday		1							
31-Aug-2020	Monday		0							
01-Sep-2020	Tuesday		0					14	1144	31
02-Sep-2020	Wednesday		0							
03-Sep-2020	Thursday	calm/rippled	9							
	Totals	choppy	50	3				4*		14*
	Totals	choppy	35	1	2			16*		34*

\* Average number of boats Observed and Expanded

**Table 3: Simple area based cpue (catch per boat trip) expansion.**

Day Type	Average Expanded Boats	Number of Days	Total Estimated Effort	CPUE				Retained			
				Chinook	Coho	Sockeye	Halibut	Chinook	Coho	Sockeye	Halibut
Weekend	34	11	374	0.0290	0.0570			11	21		
Midweek	14	20	280	0.06				17			

**Table 4: Recent years estimates of retained catch and effort.**

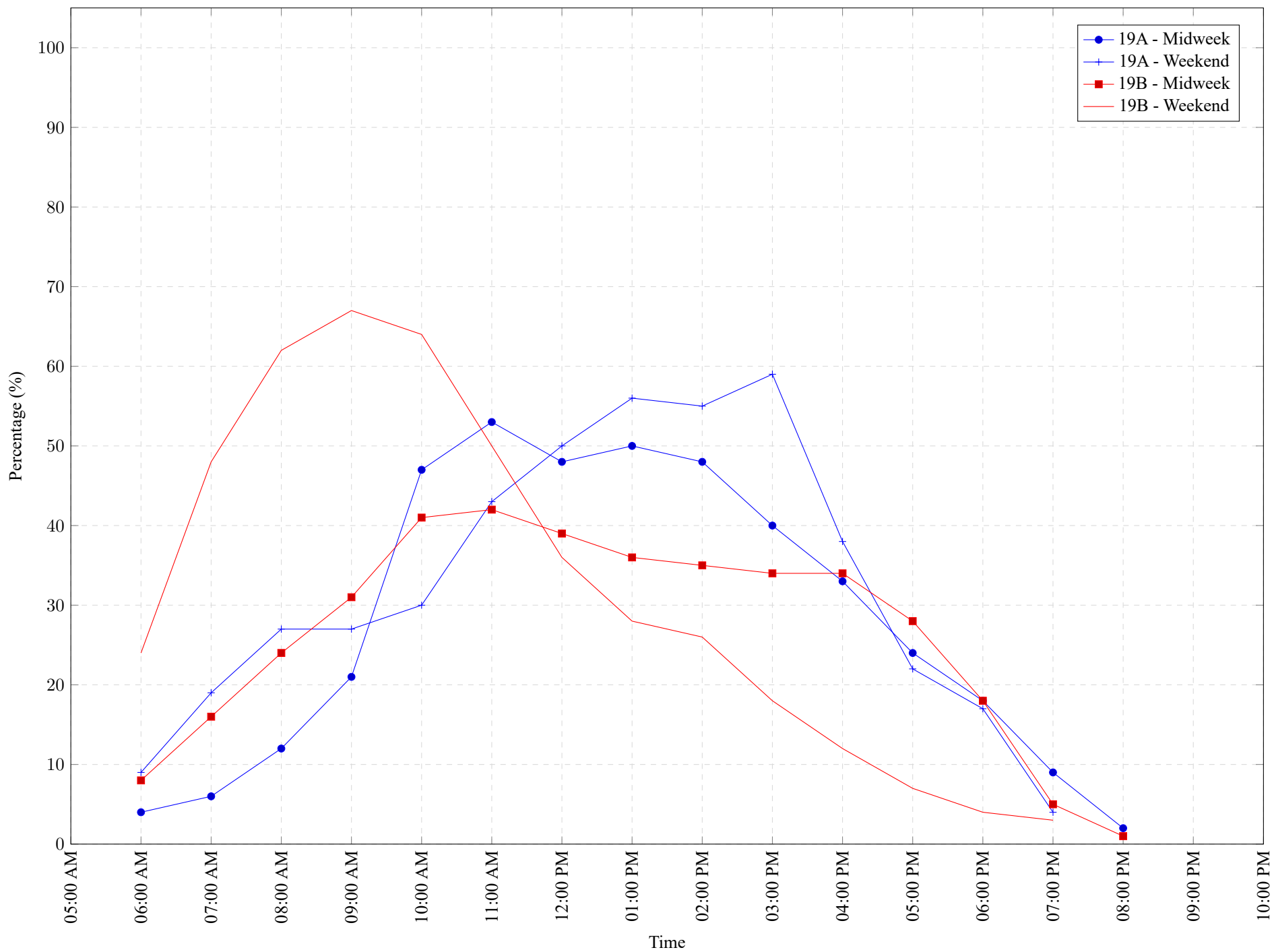
Year	Month	Total Effort	Chinook Kept	Coho Kept	Sockeye Kept	Halibut Kept
2015	August	305	2			
2016	August	396				
2017	August	430	69			
2018	August	645	134			
2019	August	784	264			0
2020	August	638	1			0
5-Yr Avg	August	512	117			0

**Table 5: Sport Head Recovery Review.**

Species	Creel Marked Catch	Creel Mark Rate	Creel Submission Rate	iRec Marked Catch	iRec Mark Rate	iRec Submission Rate	Sport Head Recoveries
---------	--------------------	-----------------	-----------------------	-------------------	----------------	----------------------	-----------------------

**Table 6: Guided Proprtions Review.**

Data Source	Interviews / Angler Days	Guided Proportion
Creel Interivews	81	0%
iRec Anglers	753	1%

*Figure 1: Proportion of each day's fishing by hour.*

**Table 7: Proportion of each day's fishing by hour.**

Areas	Day Type	6:00 AM	7:00 AM	8:00 AM	9:00 AM	10:00 AM	11:00 AM	12:00 PM	01:00 PM	02:00 PM	03:00 PM	04:00 PM	05:00 PM	06:00 PM	07:00 PM	08:00 PM	09:00 PM	10:00 PM
19A	Midweek	4%	6%	12%	21%	47%	53%	48%	50%	48%	40%	33%	24%	18%	9%	2%	0%	0%
19A	Weekend	9%	19%	27%	27%	30%	43%	50%	56%	55%	59%	38%	22%	17%	4%	0%	0%	0%
19B	Midweek	8%	16%	24%	31%	41%	42%	39%	36%	35%	34%	34%	28%	18%	5%	1%	0%	0%
19B	Weekend	24%	48%	62%	67%	64%	50%	36%	28%	26%	18%	12%	7%	4%	3%	0%	0%	0%

**Table 8: Daily Fishing Conditions.**

Date	Day Type	Cattle Point	Cowichan Bay	Mill Bay	Sidney
29 Jul 2020	Midweek				
30 Jul 2020	Midweek				
31 Jul 2020	Midweek				
01 Aug 2020	Weekend		choppy		
02 Aug 2020	Weekend		choppy		
03 Aug 2020	Weekend				
04 Aug 2020	Midweek				calm/rippled
05 Aug 2020	Midweek				
06 Aug 2020	Midweek			frequent whitecaps	
07 Aug 2020	Midweek				
08 Aug 2020	Weekend				
09 Aug 2020	Weekend	calm/rippled		calm/rippled	calm/rippled
10 Aug 2020	Midweek				
11 Aug 2020	Midweek		choppy		
12 Aug 2020	Midweek				choppy
13 Aug 2020	Midweek				
14 Aug 2020	Midweek				
15 Aug 2020	Weekend				
16 Aug 2020	Weekend		choppy		
17 Aug 2020	Midweek				choppy
18 Aug 2020	Midweek		choppy		
19 Aug 2020	Midweek	calm/rippled	choppy		
20 Aug 2020	Midweek				
21 Aug 2020	Midweek				
22 Aug 2020	Weekend		choppy		
23 Aug 2020	Weekend				
24 Aug 2020	Midweek				
25 Aug 2020	Midweek		choppy	calm/rippled	
26 Aug 2020	Midweek				
27 Aug 2020	Midweek				calm/rippled
28 Aug 2020	Midweek		choppy		
29 Aug 2020	Weekend				choppy
30 Aug 2020	Weekend				
31 Aug 2020	Midweek				
01 Sep 2020	Midweek				
02 Sep 2020	Midweek				
03 Sep 2020	Midweek		calm/rippled		calm/rippled