

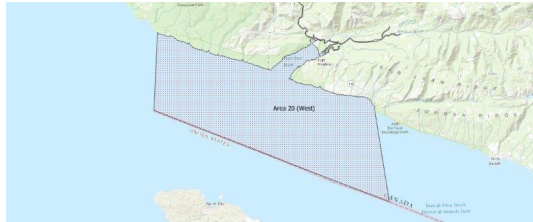
# FISHERIES AND OCEANS CANADA

## SOUTH COAST ASSESSMENT BULLETIN

### CREEL SURVEY DATA REVIEW PACKAGE

---

## Area 20 (West) August 2020



---

*Prepared By:*  
South Coast Salmon Stock Assessment Section

Friday 19<sup>th</sup> February, 2021



Fisheries and Oceans  
Canada

Pêches et Océans  
Canada



**Table 1: Numbers of Interviews conducted contributing to the area by day and access site.**

Date	Day Type	Pacific Gateway Marina	Port Renfrew Marina		
		MD	AM	MD	PM
29 Jul 2020	Midweek			21	
30 Jul 2020	Midweek				9
31 Jul 2020	Midweek			19	
01 Aug 2020	Weekend	8			
02 Aug 2020	Weekend				
03 Aug 2020	Weekend	8		23	
04 Aug 2020	Midweek			17	
05 Aug 2020	Midweek	9			
06 Aug 2020	Midweek		7		
07 Aug 2020	Midweek				
08 Aug 2020	Weekend				
09 Aug 2020	Weekend			29	
10 Aug 2020	Midweek	15		21	
11 Aug 2020	Midweek				15
12 Aug 2020	Midweek			26	
13 Aug 2020	Midweek			28	
14 Aug 2020	Midweek	5			
15 Aug 2020	Weekend				
16 Aug 2020	Weekend				
17 Aug 2020	Midweek			23	
18 Aug 2020	Midweek	15		24	
19 Aug 2020	Midweek	21			
20 Aug 2020	Midweek				
21 Aug 2020	Midweek		8		
22 Aug 2020	Weekend	19	4		
23 Aug 2020	Weekend			41	
24 Aug 2020	Midweek			17	
25 Aug 2020	Midweek			21	
26 Aug 2020	Midweek	14		32	
27 Aug 2020	Midweek			27	
28 Aug 2020	Midweek	15			
29 Aug 2020	Weekend				
30 Aug 2020	Weekend	21			18
31 Aug 2020	Midweek			16	
01 Sep 2020	Midweek	9		17	
02 Sep 2020	Midweek	12		15	
03 Sep 2020	Midweek				21

Table 2: Daily tally of interviews, catch and effort.

Date	Day	Average Fishing Conditions	Interviews & Log Trips	Chinook	Coho	Sockeye	Halibut	Observed Fishing	Flight Time	Expanded Fishing
29-Jul-2020	Wednesday	calm/rippled	21	15						
30-Jul-2020	Thursday	calm/rippled	9	8						
31-Jul-2020	Friday	calm/rippled	19	12						
01-Aug-2020	Saturday	choppy	8	6				72	0937	95
02-Aug-2020	Sunday		0					119	0945	157
03-Aug-2020	Monday (B.C. Day)	calm/rippled	31	33	6		3			
04-Aug-2020	Tuesday	calm/rippled	17	33						
05-Aug-2020	Wednesday	calm/rippled	9	8				58	0928	76
06-Aug-2020	Thursday	calm/rippled	7	9						
07-Aug-2020	Friday		0							
08-Aug-2020	Saturday		0							
09-Aug-2020	Sunday	calm/rippled	29	18	1			117	0932	155
10-Aug-2020	Monday	calm/rippled	36	54	18		13			
11-Aug-2020	Tuesday	choppy	15	6				103	0939	135
12-Aug-2020	Wednesday	calm/rippled	26	33						
13-Aug-2020	Thursday	choppy	28	29				242	0840	351
14-Aug-2020	Friday	choppy	5	12						
15-Aug-2020	Saturday		0					425	0903	619
16-Aug-2020	Sunday		0							
17-Aug-2020	Monday	calm/rippled	23	20	3					
18-Aug-2020	Tuesday	calm/rippled	39	55	9					
19-Aug-2020	Wednesday	calm/rippled	21	28	24					
20-Aug-2020	Thursday		0							
21-Aug-2020	Friday	calm/rippled	8	5						
22-Aug-2020	Saturday	calm/rippled	23	13	19		1	333	0910	441
23-Aug-2020	Sunday	choppy	41	48	1					
24-Aug-2020	Monday	choppy	17	26	16					
25-Aug-2020	Tuesday	calm/rippled	21	19	8					
26-Aug-2020	Wednesday	calm/rippled	46	41	31					
27-Aug-2020	Thursday	calm/rippled	27	13	21					
28-Aug-2020	Friday	choppy	15	11	9					
29-Aug-2020	Saturday		0							
30-Aug-2020	Sunday	choppy	39	32	17					
31-Aug-2020	Monday	choppy	16	13	3					
01-Sep-2020	Tuesday	choppy	26	26	7					
02-Sep-2020	Wednesday	choppy	27	33	25		1			
03-Sep-2020	Thursday	calm/rippled	21	23	4			87	0956	114
	Totals	calm/rippled	376	415	142		13	134*		187*
	Totals	choppy	171	150	44		4	213*		293*

\* Average number of boats Observed and Expanded

**Table 3: Simple area based cpue (catch per boat trip) expansion.**

Day Type	Average Expanded Boats	Number of Days	Total Estimated Effort	CPUE				Retained			
				Chinook	Coho	Sockeye	Halibut	Chinook	Coho	Sockeye	Halibut
Midweek	187	20	3740	1.1040	0.3780		0.0350	4129	1414		131
Weekend	293	11	3223	0.8770	0.2570		0.0230	2827	828		74

**Table 4: Recent years estimates of retained catch and effort.**

Year	Month	Total Effort	Chinook Kept	Coho Kept	Sockeye Kept	Halibut Kept
2015	August	2520	4607	716		48
2016	August	3717	4569	195		
2017	August	3817	6758	93	6	20
2018	August	3869	3708	1229	5438	
2019	August	3502	6741	330		13
2020	August	4797	4708	1429		135
5-Yr Avg	August	3485	5277	513	2722	27

**Table 5: Sport Head Recovery Review.**

Species	Creel Marked Catch	Creel Mark Rate	Creel Submission Rate	iRec Marked Catch	iRec Mark Rate	iRec Submission Rate	Sport Head Recoveries
Coho	4480	90%	15%	2525	89%	27%	682
Chinook	1388	15%	36%	2051	31%	25%	506

**Table 6: Guided Proprtions Review.**

Data Source	Interviews / Angler Days	Guided Proportion
Creel Interivews	1099	7%
iRec Anglers	4893	14%
iRec Anglers	9889	13%

Figure 1: Proportion of each day's fishing by hour.

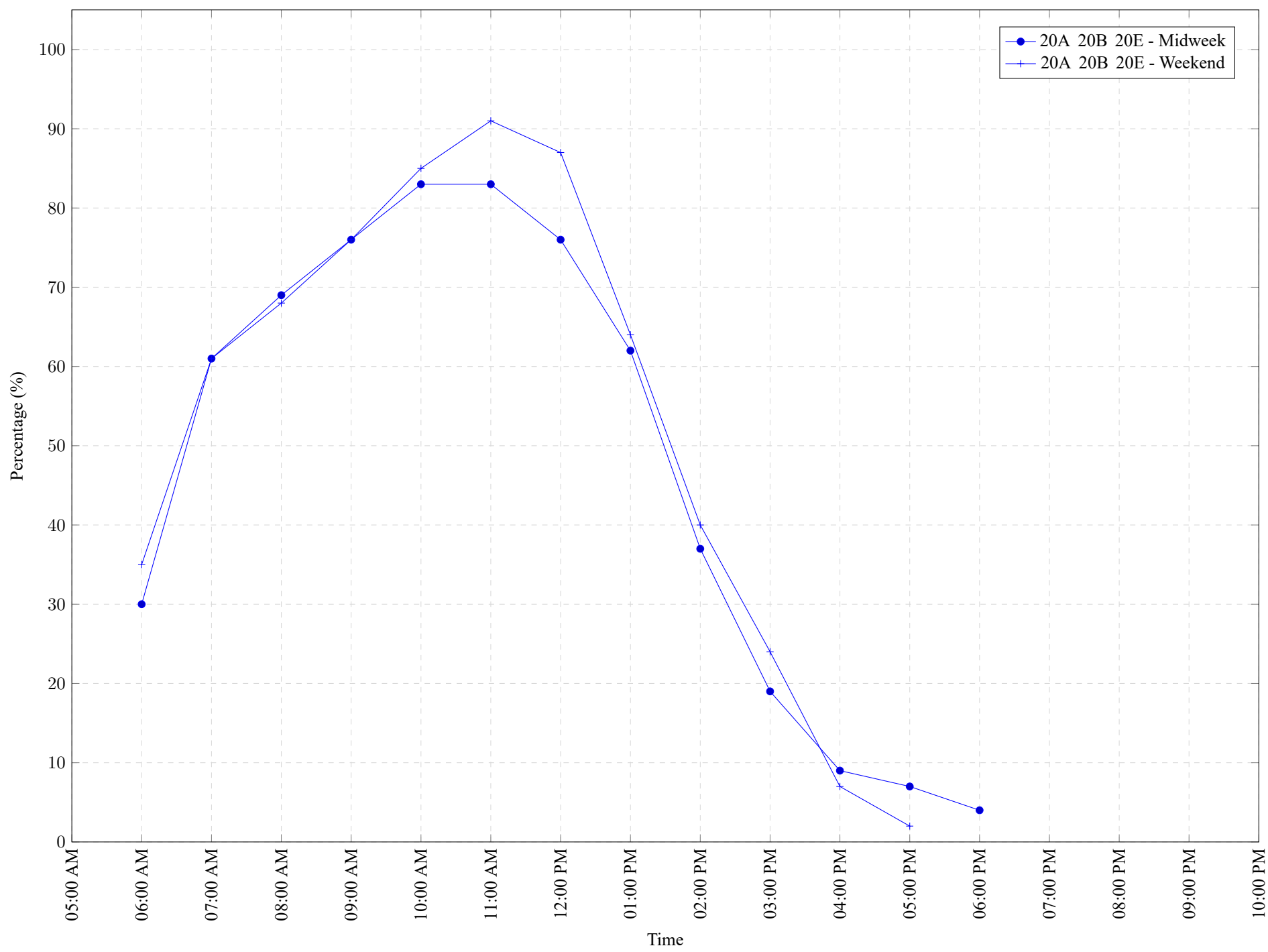


Table 7: Proportion of each day's fishing by hour.

Areas			Day Type	6:00 AM	7:00 AM	8:00 AM	9:00 AM	10:00 AM	11:00 AM	12:00 PM	01:00 PM	02:00 PM	03:00 PM	04:00 PM	05:00 PM	06:00 PM	07:00 PM	08:00 PM	09:00 PM	10:00 PM
20A	20B	20E	Midweek	30%	61%	69%	76%	83%	83%	76%	62%	37%	19%	9%	7%	4%	0%	0%	0%	0%
20A	20B	20E	Weekend	35%	61%	68%	76%	85%	91%	87%	64%	40%	24%	7%	2%	0%	0%	0%	0%	0%

**Table 8: Daily Fishing Conditions.**

Date	Day Type	Pacific Gateway Marina	Port Renfrew Marina
29 Jul 2020	Midweek		calm/rippled
30 Jul 2020	Midweek		calm/rippled
31 Jul 2020	Midweek		calm/rippled
01 Aug 2020	Weekend	choppy	
02 Aug 2020	Weekend		
03 Aug 2020	Weekend	calm/rippled	choppy
04 Aug 2020	Midweek		calm/rippled
05 Aug 2020	Midweek	calm/rippled	
06 Aug 2020	Midweek		calm/rippled
07 Aug 2020	Midweek		
08 Aug 2020	Weekend		
09 Aug 2020	Weekend		calm/rippled
10 Aug 2020	Midweek	calm/rippled	choppy
11 Aug 2020	Midweek		choppy
12 Aug 2020	Midweek		calm/rippled
13 Aug 2020	Midweek		choppy
14 Aug 2020	Midweek	choppy	
15 Aug 2020	Weekend		
16 Aug 2020	Weekend		
17 Aug 2020	Midweek		calm/rippled
18 Aug 2020	Midweek	calm/rippled	calm/rippled
19 Aug 2020	Midweek	calm/rippled	
20 Aug 2020	Midweek		
21 Aug 2020	Midweek		calm/rippled
22 Aug 2020	Weekend	calm/rippled	calm/rippled
23 Aug 2020	Weekend		choppy
24 Aug 2020	Midweek		choppy
25 Aug 2020	Midweek		calm/rippled
26 Aug 2020	Midweek	calm/rippled	choppy
27 Aug 2020	Midweek		calm/rippled
28 Aug 2020	Midweek	choppy	
29 Aug 2020	Weekend		
30 Aug 2020	Weekend	choppy	calm/rippled
31 Aug 2020	Midweek		choppy
01 Sep 2020	Midweek	calm/rippled	choppy
02 Sep 2020	Midweek	calm/rippled	choppy
03 Sep 2020	Midweek		calm/rippled