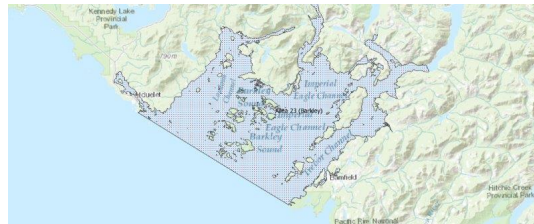


FISHERIES AND OCEANS CANADA

SOUTH COAST ASSESSMENT BULLETIN

CREEL SURVEY DATA REVIEW PACKAGE

Area 23 (Barkley) August 2020



Prepared By:
South Coast Salmon Stock Assessment Section

Saturday 20th February, 2021



Fisheries and Oceans
Canada

Pêches et Océans
Canada



Table 1: Numbers of Interviews conducted contributing to the area by day and access site.

Date	Day Type	China Creek		Clutesi Ramp			Eagle Marine (Fuel Dock)		Island West			McKay Bay Gas Dock			Mills Landing		Tofino Resort and Marina PM	Ucluelet Gov Dock		
		AM	MD	AM	MD	PM	AM	MD	AM	MD	PM	AM	MD	PM	AM	MD		AM	MD	PM
29 Jul 2020	Midweek		2								7									
30 Jul 2020	Midweek																		6	
31 Jul 2020	Midweek				1													5		
01 Aug 2020	Weekend	1																	14	
02 Aug 2020	Weekend												3						8	
03 Aug 2020	Weekend															2				
04 Aug 2020	Midweek			3								4								
05 Aug 2020	Midweek	2																		
06 Aug 2020	Midweek				6				18											
07 Aug 2020	Midweek										11					1				
08 Aug 2020	Weekend												3						9	
09 Aug 2020	Weekend		1															2		
10 Aug 2020	Midweek																			
11 Aug 2020	Midweek			2															19	
12 Aug 2020	Midweek								5						3					
13 Aug 2020	Midweek		2									3							14	
14 Aug 2020	Midweek								10											
15 Aug 2020	Weekend	2							14						1					
16 Aug 2020	Weekend												7							
17 Aug 2020	Midweek																			
18 Aug 2020	Midweek			2												3				
19 Aug 2020	Midweek													4			4			9
20 Aug 2020	Midweek				3														7	
21 Aug 2020	Midweek						4							6						
22 Aug 2020	Weekend	4																	18	
23 Aug 2020	Weekend								4						9					
24 Aug 2020	Midweek				6								10							
25 Aug 2020	Midweek		2																	
26 Aug 2020	Midweek																	6		
27 Aug 2020	Midweek						8													
28 Aug 2020	Midweek					10										4			13	
29 Aug 2020	Weekend								11			7								
30 Aug 2020	Weekend														1					
31 Aug 2020	Midweek											1								
01 Sep 2020	Midweek					4													12	
02 Sep 2020	Midweek															1				
03 Sep 2020	Midweek												6						7	

Table 2: Daily tally of interviews, catch and effort.

Date	Day	Average Fishing Conditions	Interviews & Log Trips	Chinook	Coho	Sockeye	Halibut	Observed Fishing	Flight Time	Expanded Fishing
29-Jul-2020	Wednesday	calm/rippled	9	10			1	38	0927	54
30-Jul-2020	Thursday	calm/rippled	8	17	4					
31-Jul-2020	Friday	calm/rippled	6	10			1			
01-Aug-2020	Saturday	choppy	16	16	5		1	107	0925	133
02-Aug-2020	Sunday		1	1				169	0842	206
03-Aug-2020	Monday (B.C. Day)	calm/rippled	12	20	10		2			
04-Aug-2020	Tuesday	calm/rippled	5	3						
05-Aug-2020	Wednesday	choppy	7	5	1			117	0839	162
06-Aug-2020	Thursday	choppy	24	14	9					
07-Aug-2020	Friday	choppy	13	7	1					
08-Aug-2020	Saturday	choppy	13	17	8		2			
09-Aug-2020	Sunday	choppy	3	1						
10-Aug-2020	Monday		0							
11-Aug-2020	Tuesday	choppy	22	60	3		1			
12-Aug-2020	Wednesday	calm/rippled	10	29	5					
13-Aug-2020	Thursday	calm/rippled	20	71	14		2	180	0743	263
14-Aug-2020	Friday	calm/rippled	10	35	6					
15-Aug-2020	Saturday	calm/rippled	17	17	1			216	0739	298
16-Aug-2020	Sunday	choppy	7	4	1					
17-Aug-2020	Monday		0							
18-Aug-2020	Tuesday	calm/rippled	5	12				109	0905	148
19-Aug-2020	Wednesday	choppy	17	36	2		1			
20-Aug-2020	Thursday	choppy	10	16						
21-Aug-2020	Friday	frequent whitecaps	4	1						
22-Aug-2020	Saturday	choppy	28	39	8		1	226	0750	291
23-Aug-2020	Sunday	calm/rippled	13	40	6					
24-Aug-2020	Monday	calm/rippled	16	31	10					
25-Aug-2020	Tuesday	frequent whitecaps	2	3	2					
26-Aug-2020	Wednesday	choppy	6	10						
27-Aug-2020	Thursday	calm/rippled	8	23	1					
28-Aug-2020	Friday	calm/rippled	27	53	10			214	0821	293
29-Aug-2020	Saturday	choppy	18	24	6			273	0842	332
30-Aug-2020	Sunday	calm/rippled	1	4						
31-Aug-2020	Monday	calm/rippled	1	1				141	0739	201
01-Sep-2020	Tuesday	choppy	16	38	1					
02-Sep-2020	Wednesday	calm/rippled	1	1						
03-Sep-2020	Thursday	calm/rippled	13	8				90	0922	128
	Totals	choppy	207	410	64		4	152*		213*
	Totals	choppy	129	183	45		6	198*		252*

* Average number of boats Observed and Expanded

Table 3: Simple area based cpue (catch per boat trip) expansion.

Day Type	Average Expanded Boats	Number of Days	Total Estimated Effort	CPUE				Retained			
				Chinook	Coho	Sockeye	Halibut	Chinook	Coho	Sockeye	Halibut
Weekend	252	11	2772	1.4190	0.3490		0.0470	3933	967		130
Midweek	213	20	4260	1.9810	0.3090		0.0190	8439	1316		81

Table 4: Recent years estimates of retained catch and effort.

Year	Month	Total Effort	Chinook Kept	Coho Kept	Sockeye Kept	Halibut Kept
2015	August	4764	4474	3551	229	4
2016	August	7176	8030	3698	246	56
2017	August	8978	9725	2002	3	305
2018	August	7708	8474	3129	96	12
2019	August	9544	12957	5321		117
2020	August	6948	10273	1625		29
5-Yr Avg	August	7634	8732	3540	144	99

Table 5: Sport Head Recovery Review.

Species	Creel Marked Catch	Creel Mark Rate	Creel Submission Rate	iRec Marked Catch	iRec Mark Rate	iRec Submission Rate	Sport Head Recoveries
Coho	611	41%	3%	708	49%	2%	16
Chinook	1032	13%	6%	964	15%	7%	65

Table 6: Guided Proprtions Review.

Data Source	Interviews / Angler Days	Guided Proportion
Creel Interivews	422	38%
iRec Anglers	12530	10%

Figure 1: Proportion of each day's fishing by hour.

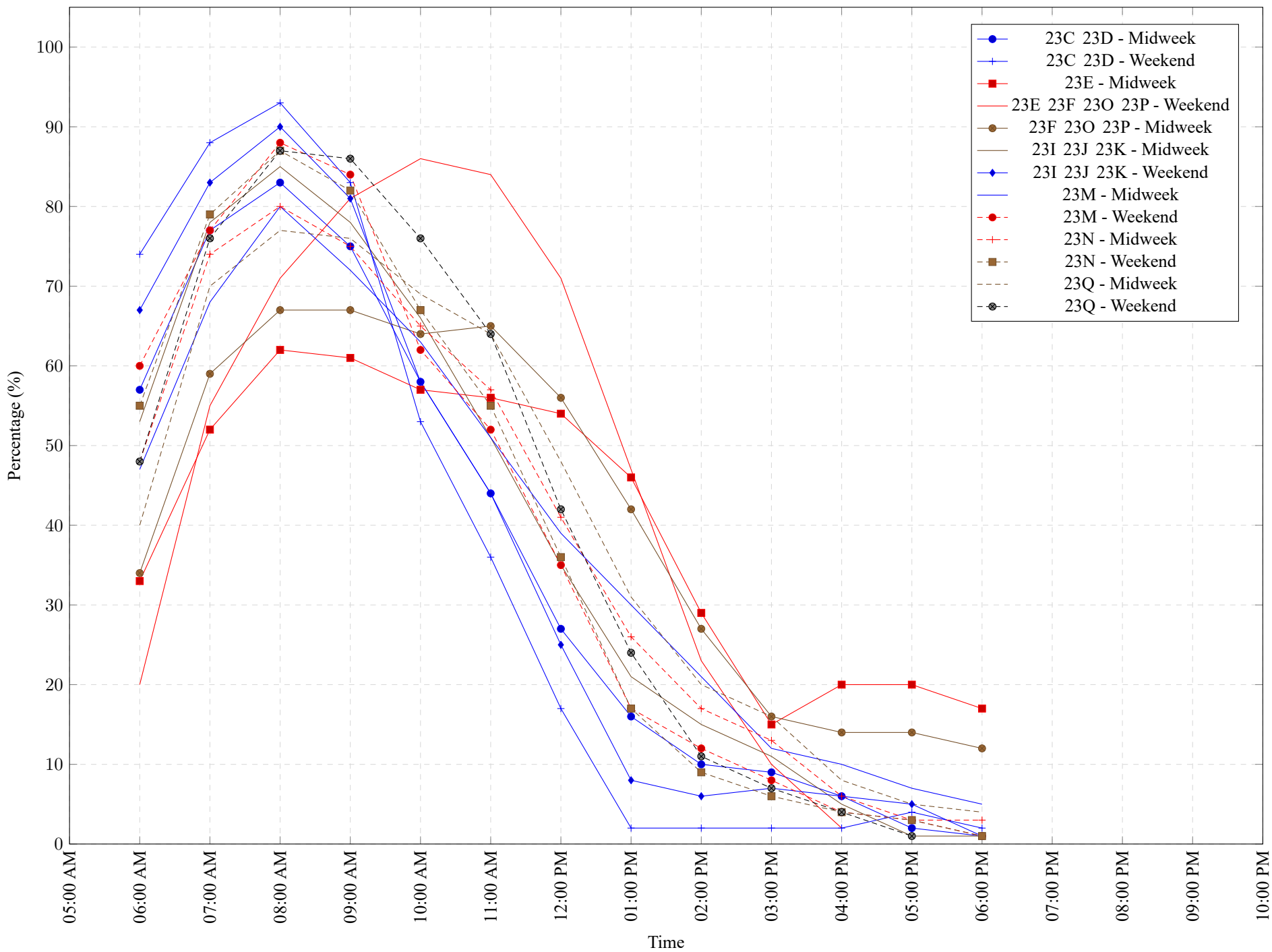


Table 7: Proportion of each day's fishing by hour.

Areas	Day Type	6:00 AM	7:00 AM	8:00 AM	9:00 AM	10:00 AM	11:00 AM	12:00 PM	01:00 PM	02:00 PM	03:00 PM	04:00 PM	05:00 PM	06:00 PM	07:00 PM	08:00 PM	09:00 PM	10:00 PM
23C 23D	Midweek	57%	77%	83%	75%	58%	44%	27%	16%	10%	9%	6%	2%	1%	0%	0%	0%	0%
23C 23D	Weekend	74%	88%	93%	83%	53%	36%	17%	2%	2%	2%	2%	4%	2%	0%	0%	0%	0%
23E	Midweek	33%	52%	62%	61%	57%	56%	54%	46%	29%	15%	20%	20%	17%	0%	0%	0%	0%
23E 23F 23O 23P	Weekend	20%	55%	71%	81%	86%	84%	71%	47%	23%	10%	2%	0%	0%	0%	0%	0%	0%
23F 23O 23P	Midweek	34%	59%	67%	67%	64%	65%	56%	42%	27%	16%	14%	14%	12%	0%	0%	0%	0%
23I 23J 23K	Midweek	53%	78%	85%	78%	66%	51%	35%	21%	15%	11%	5%	1%	1%	0%	0%	0%	0%
23I 23J 23K	Weekend	67%	83%	90%	81%	58%	44%	25%	8%	6%	7%	6%	5%	1%	0%	0%	0%	0%
23M	Midweek	47%	68%	80%	72%	63%	51%	39%	30%	21%	12%	10%	7%	5%	0%	0%	0%	0%
23M	Weekend	60%	77%	88%	84%	62%	52%	35%	17%	12%	8%	4%	3%	1%	0%	0%	0%	0%
23N	Midweek	48%	74%	80%	75%	65%	57%	41%	26%	17%	13%	6%	3%	3%	0%	0%	0%	0%
23N	Weekend	55%	79%	87%	82%	67%	55%	36%	17%	9%	6%	4%	3%	1%	0%	0%	0%	0%
23Q	Midweek	40%	70%	77%	76%	69%	64%	48%	31%	20%	16%	8%	5%	4%	0%	0%	0%	0%
23Q	Weekend	48%	76%	87%	86%	76%	64%	42%	24%	11%	7%	4%	1%	0%	0%	0%	0%	0%

Table 8: Daily Fishing Conditions.

Date	Day Type	China Creek	Clutesi Ramp	Eagle Marine (Fuel Dock)	Island West	McKay Bay Gas Dock	Mills Landing	Tofino Resort and Marina	Ucluelet Gov Dock
29 Jul 2020	Midweek	choppy			calm/rippled				
30 Jul 2020	Midweek								calm/rippled
31 Jul 2020	Midweek		frequent whitecaps						calm/rippled
01 Aug 2020	Weekend	choppy							choppy
02 Aug 2020	Weekend								
03 Aug 2020	Weekend					calm/rippled			calm/rippled
04 Aug 2020	Midweek		calm/rippled				calm/rippled		
05 Aug 2020	Midweek	frequent whitecaps				calm/rippled			
06 Aug 2020	Midweek		frequent whitecaps	choppy					
07 Aug 2020	Midweek				choppy		calm/rippled		
08 Aug 2020	Weekend					calm/rippled			choppy
09 Aug 2020	Weekend	choppy							choppy
10 Aug 2020	Midweek								
11 Aug 2020	Midweek		choppy						choppy
12 Aug 2020	Midweek			calm/rippled			calm/rippled		
13 Aug 2020	Midweek	frequent whitecaps				choppy			calm/rippled
14 Aug 2020	Midweek			calm/rippled					
15 Aug 2020	Weekend	choppy			calm/rippled		calm/rippled		
16 Aug 2020	Weekend					choppy			
17 Aug 2020	Midweek								
18 Aug 2020	Midweek		calm/rippled				calm/rippled		
19 Aug 2020	Midweek					calm/rippled		calm/rippled	choppy
20 Aug 2020	Midweek		calm/rippled						frequent whitecaps
21 Aug 2020	Midweek			frequent whitecaps					
22 Aug 2020	Weekend	choppy				choppy			choppy
23 Aug 2020	Weekend				calm/rippled		calm/rippled		
24 Aug 2020	Midweek		choppy			calm/rippled			
25 Aug 2020	Midweek	frequent whitecaps							
26 Aug 2020	Midweek								choppy
27 Aug 2020	Midweek			calm/rippled					
28 Aug 2020	Midweek		calm/rippled				choppy		calm/rippled
29 Aug 2020	Weekend				frequent whitecaps	calm/rippled			
30 Aug 2020	Weekend						calm/rippled		
31 Aug 2020	Midweek					calm/rippled			
01 Sep 2020	Midweek		calm/rippled						choppy
02 Sep 2020	Midweek						calm/rippled		
03 Sep 2020	Midweek					choppy			calm/rippled